

OFFICE SPACE AVAILABLE FOR LEASE

# 30 WALL STREET

BETWEEN NASSAU AND WILLIAM STREETS



## AVAILABILITIES

**Entire 2nd Floor:** 11,323 SF

**Entire 3rd Floor:** 11,329 SF

**Entire 4th Floor:** 11,274 SF

**TOTAL:** 33,926 SF

## ABOUT THE SPACE

**Term:** 10-15 years

**Possession:** Available immediately

**Rent:** Upon request

## ABOUT THE BUILDING

Unique building within a building opportunity

Dedicated entrance on Wall Street

Prime branding & signage opportunity

Existing dedicated elevator

Building attended 24/7

Modern turn-key available

Full floor identity

Convenient access to the 2, 3, 4, 5, A, C, E, J, Z, R  
subways, PATH, Pier 11 Ferry Terminal & Fulton

Center

## LEASING INFORMATION

**Carolyn Zimmer**

212.537.7680

carolyn.zimmer@transwestern.com

**Rory Murphy**

212.537.7695

rory.murphy@transwestern.com

**Patrick Heeg**

212.537.9002

patrick.heeg@transwestern.com

The information provided herein was obtained from sources believed reliable; however, Transwestern makes no guarantees, warranties or representations as to the completeness or accuracy thereof. The presentation of this property is submitted subject to errors, omissions, change of price or conditions, prior sale or lease, or withdrawal without notice. Copyright © 2017 Transwestern.



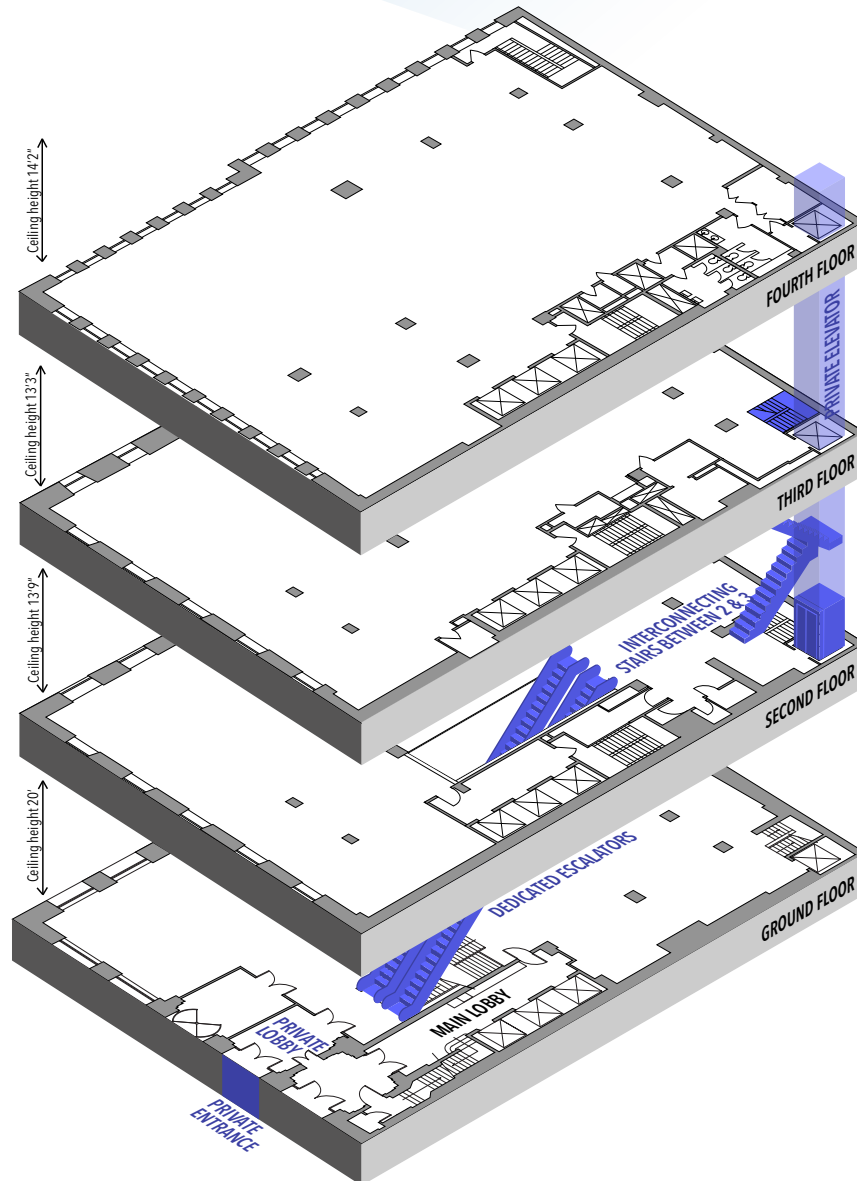
600 Lexington Avenue, 10th Floor | New York, NY 10022  
T 212.537.7700 F 212.537.0380 www.transwestern.com

OFFICE SPACE AVAILABLE FOR LEASE

# 30 WALL STREET

BETWEEN NASSAU AND WILLIAM STREETS

UNIQUE BUILDING-WITHIN-A-BUILDING OPPORTUNITY



## LEASING INFORMATION

**Carolyn Zimmer**

212.537.7680

carolyn.zimmer@transwestern.com

**Rory Murphy**

212.537.7695

rory.murphy@transwestern.com

**Patrick Heeg**

212.537.9002

patrick.heeg@transwestern.com

The information provided herein was obtained from sources believed reliable; however, Transwestern makes no guarantees, warranties or representations as to the completeness or accuracy thereof. The presentation of this property is submitted subject to errors, omissions, change of price or conditions, prior sale or lease, or withdrawal without notice. Copyright © 2017 Transwestern.



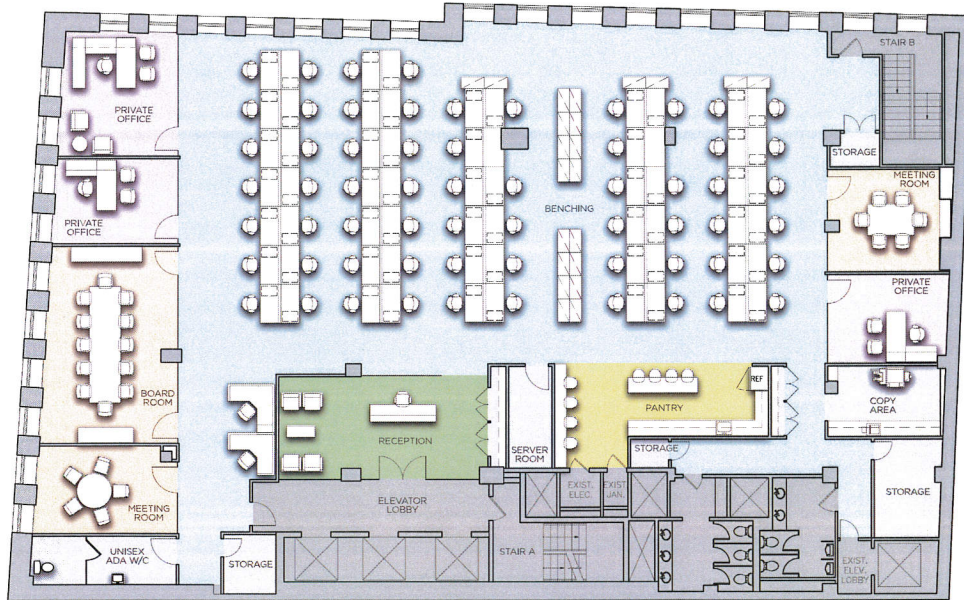
600 Lexington Avenue, 10th Floor | New York, NY 10022  
T 212.537.7700 F 212.537.0380 [www.transwestern.com](http://www.transwestern.com)

OFFICE SPACE AVAILABLE FOR LEASE

# 30 WALL STREET

BETWEEN NASSAU AND WILLIAM STREETS

## PROPOSED PLAN



## NEW BUILDING STANDARD FINISHES



## LEASING INFORMATION

**Carolyn Zimmer**

212.537.7680

carolyn.zimmer@transwestern.com

**Rory Murphy**

212.537.7695

rory.murphy@transwestern.com

**Patrick Heeg**

212.537.9002

patrick.heeg@transwestern.com

The information provided herein was obtained from sources believed reliable; however, Transwestern makes no guarantees, warranties or representations as to the completeness or accuracy thereof. The presentation of this property is submitted subject to errors, omissions, change of price or conditions, prior sale or lease, or withdrawal without notice. Copyright © 2017 Transwestern.



600 Lexington Avenue, 10th Floor | New York, NY 10022  
T 212.537.7700 F 212.537.0380 [www.transwestern.com](http://www.transwestern.com)