

FOR LEASE

NOBLESVILLE MEDICAL ARTS BUILDING

18051 RIVER ROAD | NOBLESVILLE, IN | 46062

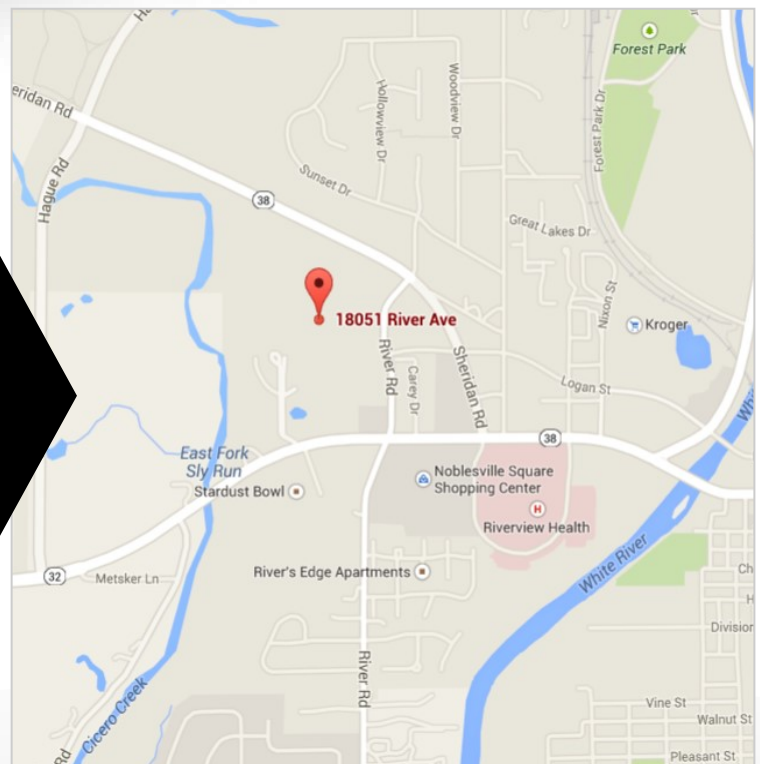


MEDICAL OFFICE SPACE AVAILABLE

AVAILABLE - **8,907 RSF** - FIRST FLOOR SPACE

Max Contiguous: 4,498 RSF | Min Divisible: 4,409 RSF

The Noblesville Medical Arts Building consists of 38,865 total square feet and is conveniently located on River Road, just one mile east of downtown Noblesville and easily accessible from US HWY 38 and US HWY 32. The building is less than a half mile from Riverview Health Hospital, and less than 10 miles from other major hospital systems such as IU Health Saxony and St. Vincent Fishers. In addition to its patient friendly location, the building also features covered patient drop-off and free rent based on lease term.



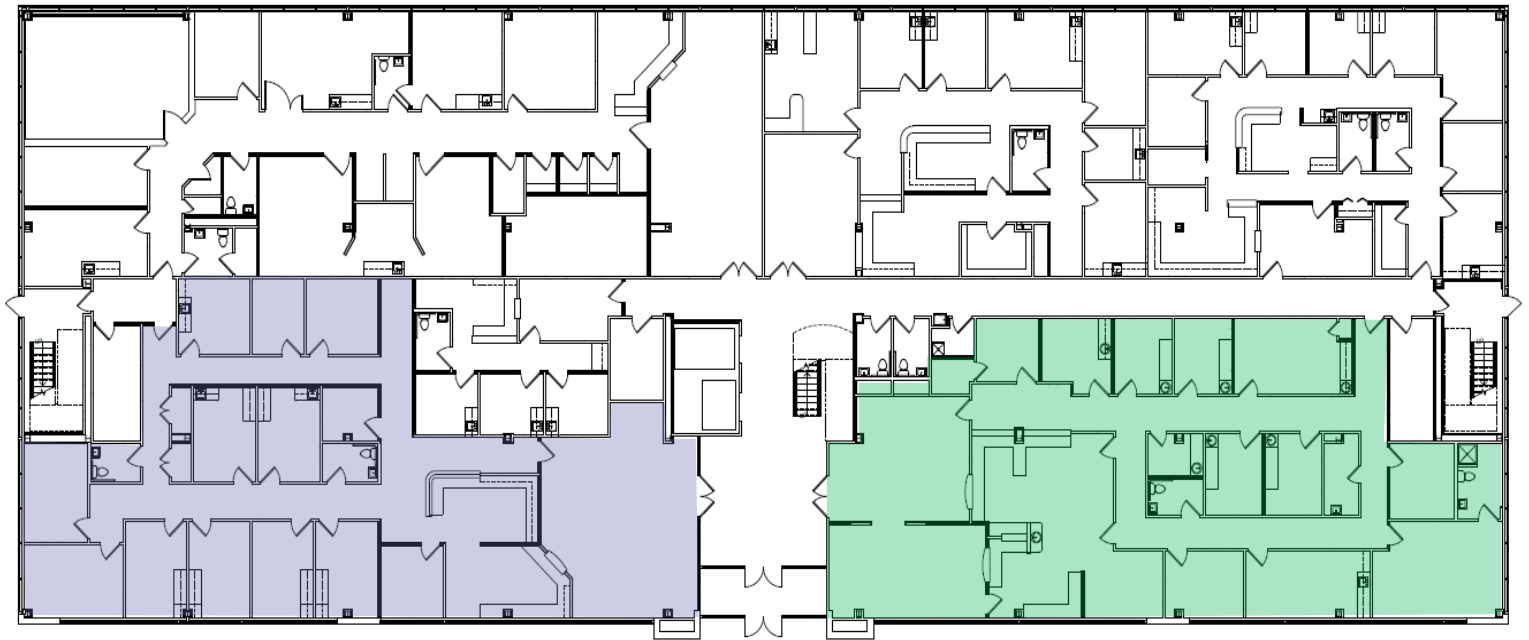
CORNERSTONE COMPANIES, INC.

8902 N Meridian Street, Suite 205

Indianapolis, IN 46260

FIRST FLOOR

18051 RIVER ROAD | NOBLESVILLE, IN | 46062



SUITE 100- 4,409 RSF

AVAILABLE IMMEDIATELY

SUITE 101- 4,498 RSF

AVAILABLE IMMEDIATELY

TOTAL AVAILABLE: 8,907 RSF

Min Divisible: 4,409 RSF | Max Contiguous: 4,498

FOR MORE INFORMATION,
CONTACT

Ross Goyer

Senior VP Development and Brokerage

Direct: 317.288.9011

Email: RGoyer@CornerstoneCompaniesInc.Com

CONTACT

18051 RIVER ROAD | NOBLESVILLE, IN | 46062

FOR LEASING INFORMATION,
CONTACT:

CORNERSTONE COMPANIES, INC

8902 N . Meridian St, Suite 205 | Indianapolis, IN| 46260

Main Line: 317.841.9900

www.cornerstonecompaniesinc.com

BROKER:

Ross Goyer

Senior VP Development and Brokerage

Direct: 317.288.9011

Email: RGoyer@CornerstoneCompaniesInc.Com



ABOUT CORNERSTONE:

Cornerstone Companies, Inc. was established in 1985 to operate as an integrated healthcare real estate development, leasing, property management, construction, consulting, and investment company. Cornerstone is a privately owned company that has been involved in the healthcare real estate business for over three decades. Cornerstone has partnered with physicians and hospitals to develop more than eighty (80) medical facilities of all types and manages more than 4,000,000 RSF of medical office space in the Midwest. Cornerstone has full service offices in Kentucky, Ohio, Minnesota, Michigan and Indiana.

