


101 NORTH MAIN

CORPORATE AND CREATIVE
OFFICE SPACE
FOR LEASE | PREMIER
BUSINESS DISTRICT

UP TO ±47,530 SF AVAILABLE



± 983 - $\pm 47,530$ SF AVAILABLE

- + Renovations to start in 2018 with additional improvements planned
- + Located on ONE City Plaza
- + $\pm 191,568$ SF Total Building | 16 Floors
- + Amenities:
 - Fitness Center, equipped with locker rooms and showers
 - Direct access to parking garages from 3rd floor
 - On-site coffee shop
- + Parking available in adjacent city garages
- + Lease Rate: \$25.50/RSF Full Service



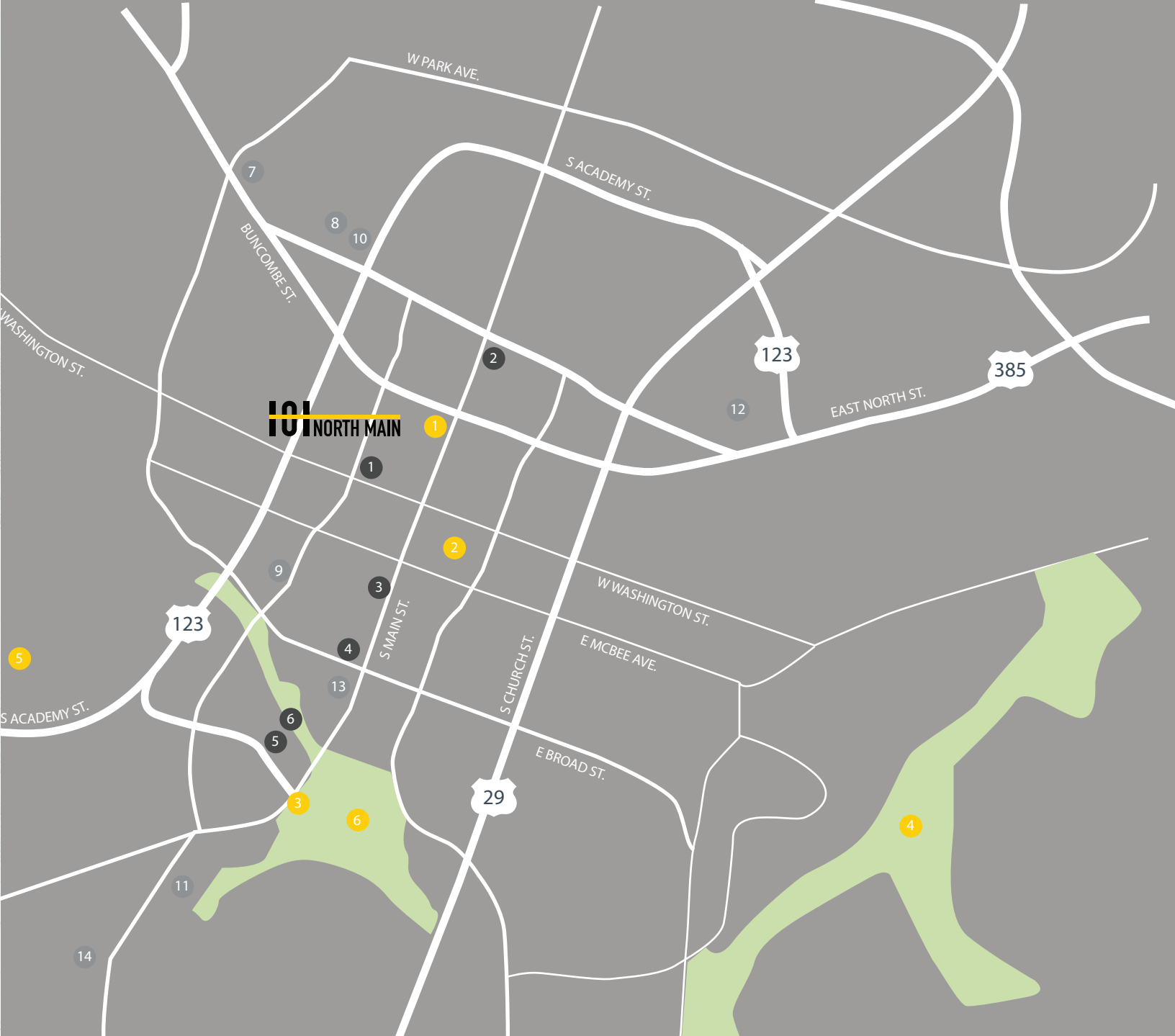
CLASS A DOWNTOWN OFFICE SPACE

Located in the heart of Greenville's award-winning downtown, 101 N Main is pedestrian friendly to over 120 restaurants, 100 retailers, more than six hotels and many downtown attractions such as Falls Park and the Swamp Rabbit Trail.



DINING





EVENT VENUES & ACCOMMODATIONS

- | | |
|-----------------------------------|---|
| 1 Aloft Hotel | 9 Center Stage |
| 2 Hyatt Regency | 10 Greenville Little Theatre |
| 3 Westin Poinsett | 11 Warehouse Theatre |
| 4 Courtyard Marriott | 12 Bon Secours Wellness Arena |
| 5 Hampton Inn | 13 Peace Center for the Performing Arts |
| 6 Embassy Suites | 14 Flour Field |
| 7 Upcountry Museum | |
| 8 Greenville County Museum of Art | |

HEALTH & WELLNESS

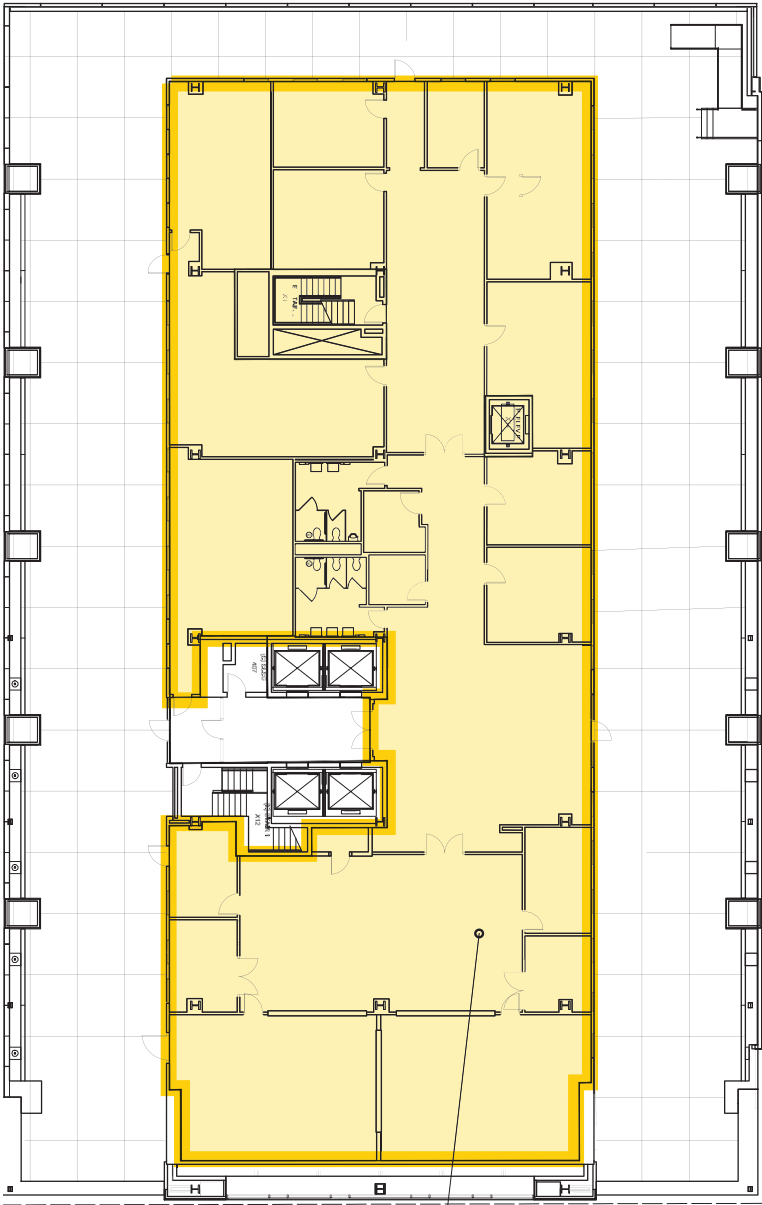
- 1 Carolina Fitness
- 2 Anytime Fitness
- 3 Falls Park on the Reedy River
- 4 Cleveland Park
- 5 Kroc Center
- 6 Swamp Rabbit Trail

FLOOR
PLANS

±983 SF - ±47,530 SF

4TH FLOOR
±10,957 SF AVAILABLE

Suite 400 | ±10,957 RSF



* former IronYard and tech space

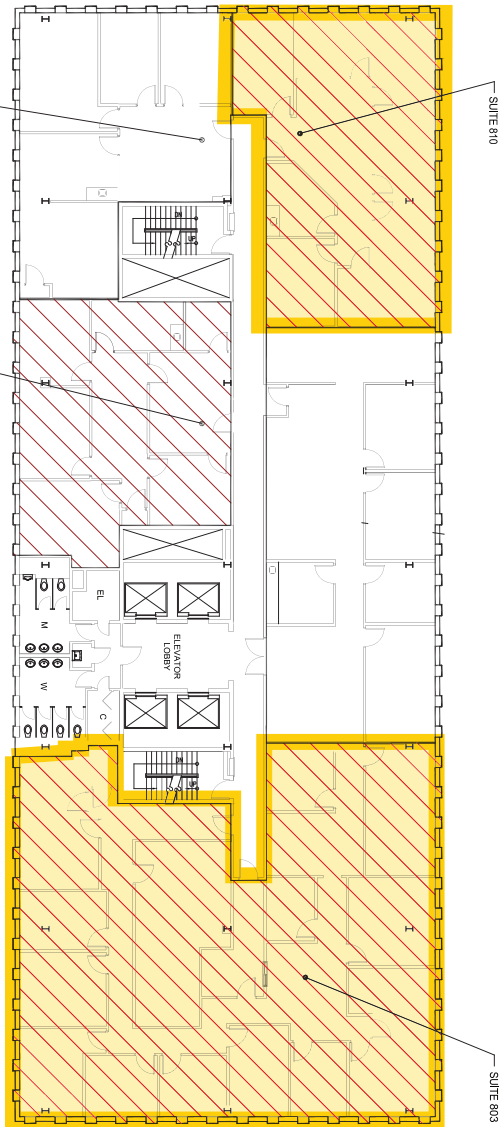


Available

8TH FLOOR
±6,188 SF AVAILABLE

Suite 803 | ±4,428 RSF

Suite 810 | ±1,760 RSF



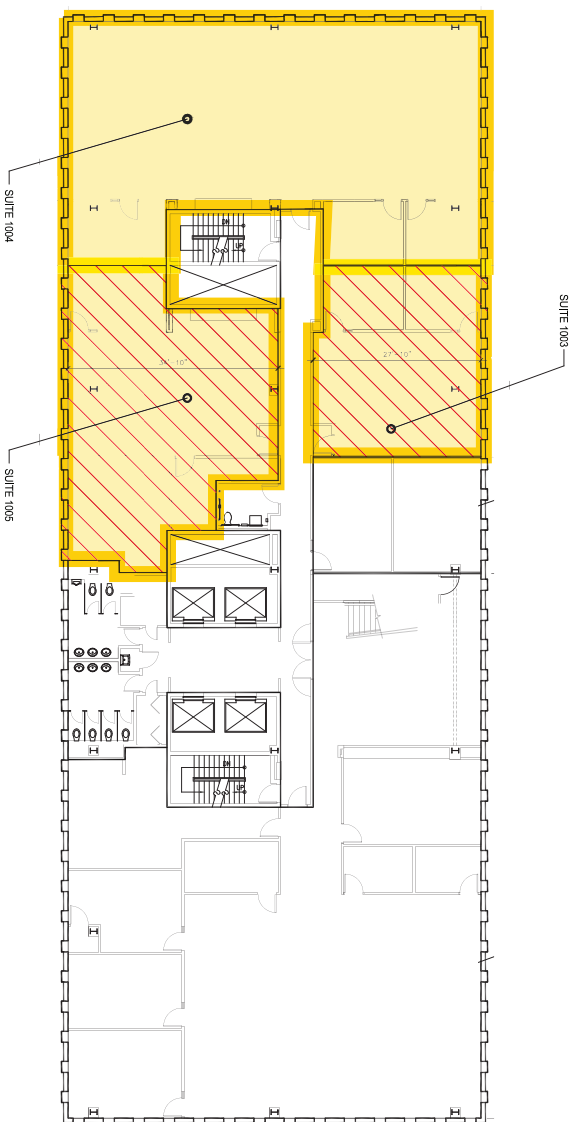
AVAILABLE FOR LEASE

10TH FLOOR ±5,492 SF AVAILABLE

Suite 1003 | ±983 RSF

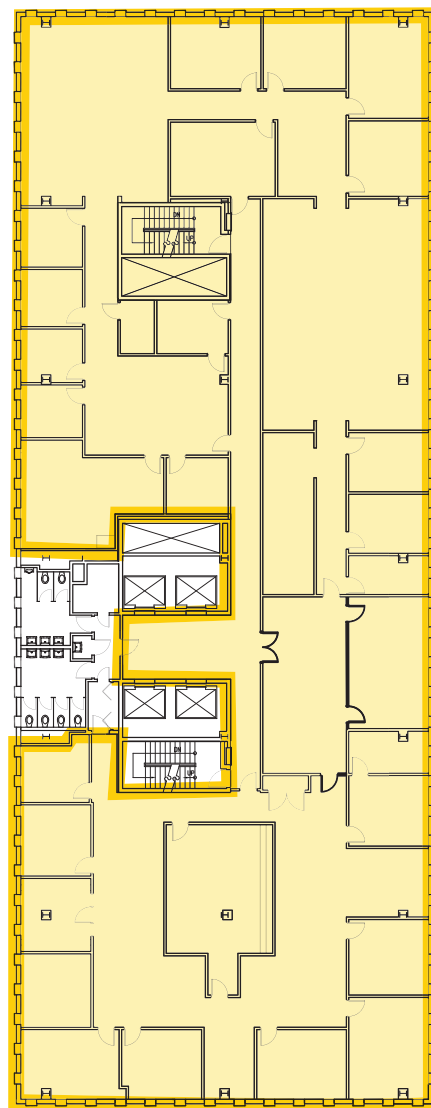
Suite 1004 | ±2,905 RSF

Suite 1005 | ±1,604 RSF



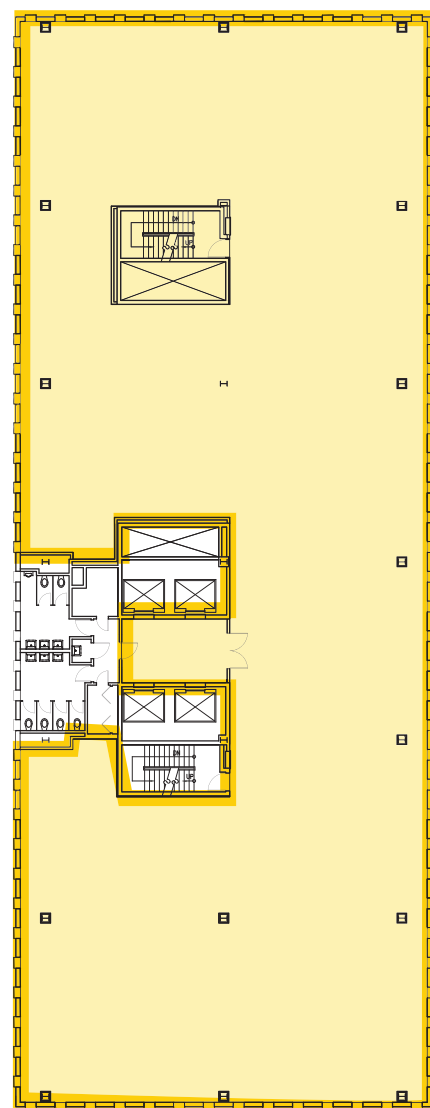
12TH FLOOR ±12,455 SF AVAILABLE

Suite 1200 | ±12,455 RSF



16TH FLOOR ±12,438 SF AVAILABLE

Suite 1600 | ±12,438 RSF



101 NORTH MAIN

Bank of America

FOR LEASING INQUIRIES:

CHARLES GOUCH, CCIM, SIOR
Senior Vice President
+1 864 527 6035
charles.gouch@cbre.com

BLAINE HART, SIOR
First Vice President
+1 864 527 6054
blaine.hart@cbre.com

SHELBY DODSON, LEED AP
First Vice President
+1 864 527 6022
shelby.dodson@cbre.com

© 2018 CBRE, Inc. All rights reserved. This information has been obtained from sources believed reliable, but has not been verified for accuracy or completeness. Any projections, opinions, or estimates are subject to uncertainty. The information may not represent the current or future performance of the property. You and your advisors should conduct a careful, independent investigation of the property and verify all information. Any reliance on this information is solely at your own risk. CBRE and the CBRE logo are service marks of CBRE, Inc. and/or its affiliated or related companies in the United States and other countries. All other marks displayed on this document are the property of their respective owners. Photos herein are the property of their respective owners and use of these images without the express written consent of the owner is prohibited. PMStudio_July 2017

CBRE