

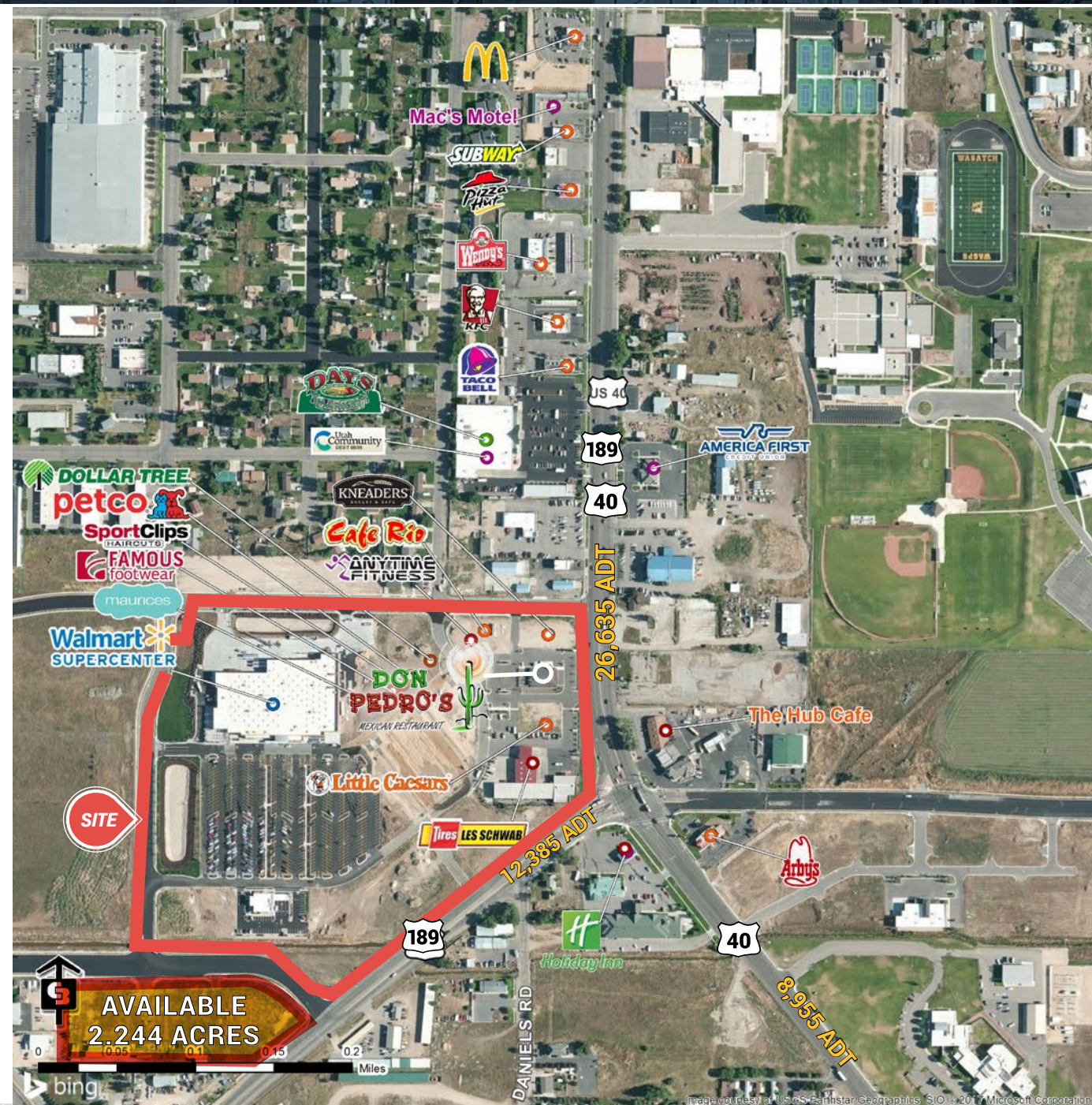
FOR LEASE  
OR BUILD TO SUIT



RETAIL



FOR LEASE  
OR BUILD TO SUIT



**Zach Beaudry**  
801.947.8319  
zach.beaudry@cbcadvisors.com

DEVELOPED BY:



www.cbcadvisors.com



RETAIL



JUNCTION OF US HWY 189 & HWY 40  
HEBER, UTAH

#### PROPERTY INFORMATION

- Premiere shopping center for Wasatch County
- Approximately 250,000 sq. ft. of retail space
- Pads and shop space available
- Lease or Build to Suit opportunities

#### ANCHORED BY:



#### DEMOGRAPHICS

	1 MILE	3 MILE	5 MILE
Population			
2017 Estimated	6,314	20,750	27,273
2022 Projected	7,374	24,203	32,342
Households			
2017 Estimated	1,834	6,007	8,074
2022 Projected	2,102	6,890	9,419
Income			
2017 Median HHI	\$62,800	\$71,304	\$75,440
2017 Average HHI	\$75,259	\$88,446	\$96,088
2017 Per Capita	\$22,073	\$26,088	\$29,027

Information provided by ESRI Business Analyst

**Zach Beaudry**  
801.947.8319  
zach.beaudry@cbcadvisors.com

DEVELOPED BY:



www.cbcadvisors.com



**CBC ADVISORS**  
6550 S MILLROCK DR, STE 200  
SALT LAKE CITY, UTAH 84121  
(P) 801.947.8300

This statement with the information it contains is given with the understanding that negotiations relating to the purchase, renting or leasing of this property shall be conducted through this office. The information while not guaranteed has been secured from sources we believe to be reliable however, it is up to the buyer or tenant to verify the information and conduct appropriate due diligence. Coldwell Banker Commercial and its Logo are registered service marks owned by Coldwell Banker Real Estate, LLC. Each Office is Independently Owned and Operated. All Rights Reserved. © 2016





JUNCTION OF US HWY 189 & HWY 40  
HEBER, UTAH

FOR LEASE  
OR BUILD TO SUIT



DEVELOPED BY:



**Zach Beaudry**  
801.947.8319  
zach.beaudry@cbcadvisors.com

www.cbcadvisors.com



**CBC ADVISORS**  
6550 S MILLROCK DR, STE 200  
SALT LAKE CITY, UTAH 84121  
(P) 801.947.8300

