

FOR LEASE


AMERICAN CAPITAL PROPERTIES
WWW.ACP-SW.COM

RICHMOND ATRIUM

6420 RICHMOND AVENUE
HOUSTON, TX 77057



OVERVIEW

- » On-site leasing and management office
- » Move-in ready or fully customizable suites
- » Generous parking (249 spaces)
- » 24-hour secure key card access

LOCATION

- » Less than 1 mile to Westpark Tollway; 1.5 miles to US 59
- » Convenient location near banks, post office, shopping and restaurants

TRAFFIC COUNTS (H-GAC 2016)

- » Westheimer Road = 72,763 daily
- » Richmond Avenue = 33,457 daily
- » Hillcroft Avenue = 39,793 daily
- » I-610 = 188,051 daily

ASKING RATE

- » Contact agent for current rates
- » Rent includes utilities and janitorial service

SPACE AVAILABLE

- » 147 – 3,068 rsf



FOR LEASING INFORMATION, PLEASE CONTACT:
ARMANDO MAGANA | (713) 494-8790
ARMANDOMAGANA@AMERICANCAPITALPROPERTIESLLC.COM

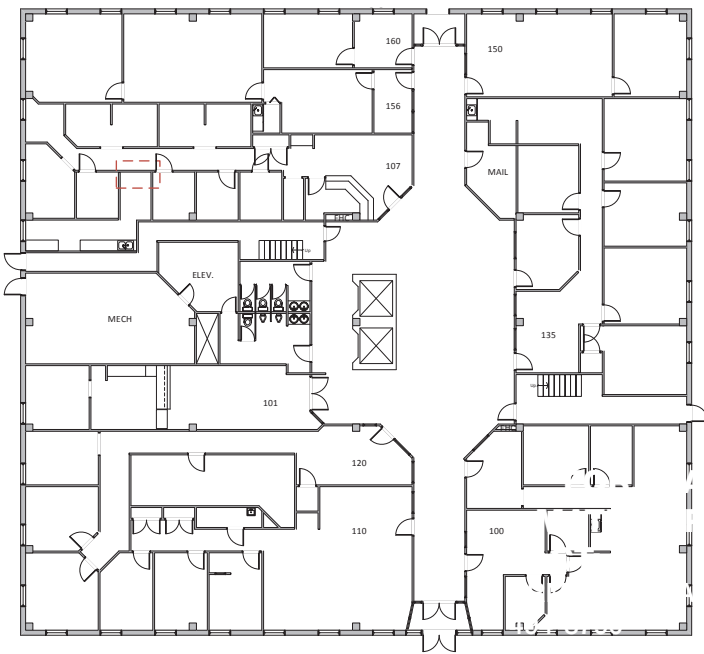
FOR OTHER AVAILABILITY, VISIT US AT WWW.ACP-SW.COM

AVAILABLE SUITES | 1ST - 2ND FLOORS

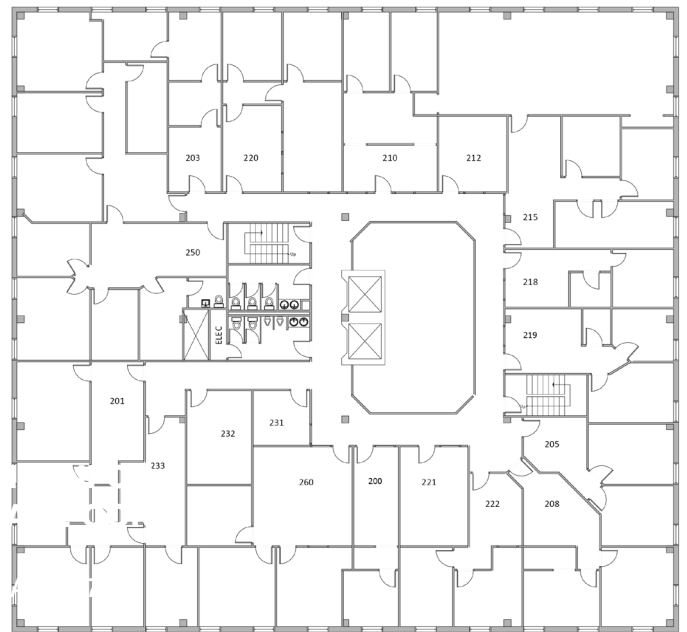
SUITE	SQ FT
-------	-------

No availability these floors.

1ST FLOOR



2ND FLOOR



plans continue 

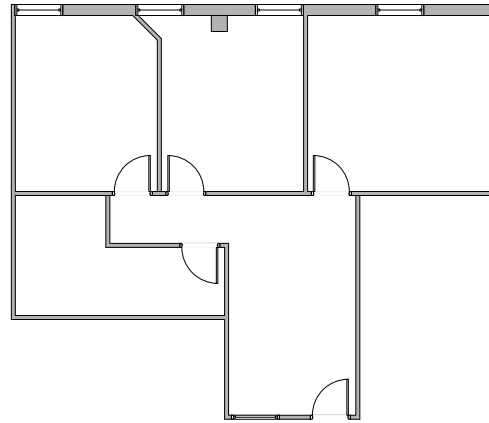
FOR LEASING INFORMATION, PLEASE CONTACT:
ARMANDO MAGANA | (713) 494-8790
ARMANDOMAGANA@AMERICANCAPITALPROPERTIESLLC.COM

FOR OTHER AVAILABILITY, VISIT US AT WWW.ACP-SW.COM

AVAILABLE SUITES | 3RD - 4TH FLOORS

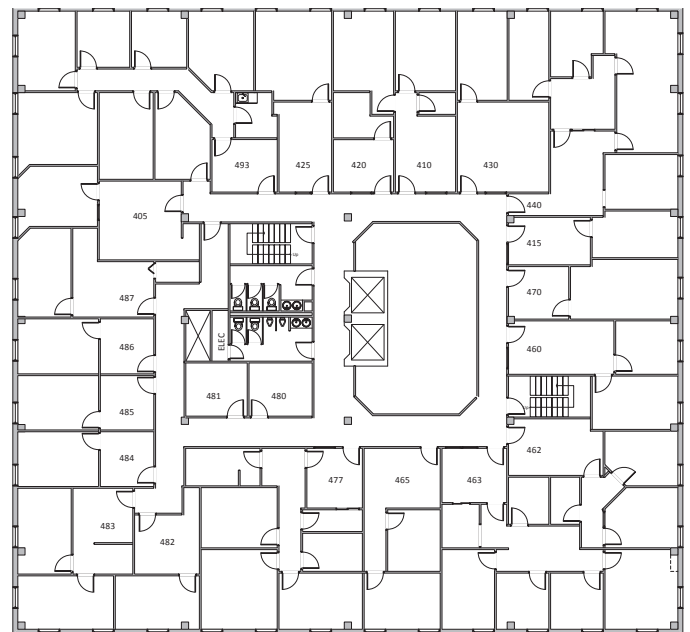
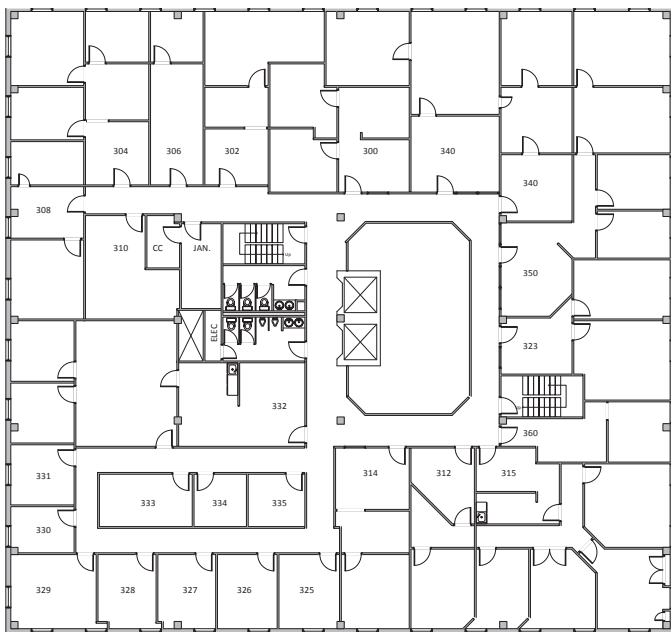
SUITE	SQ FT
331	160

331



3RD FLOOR

4TH FLOOR



plans continue 

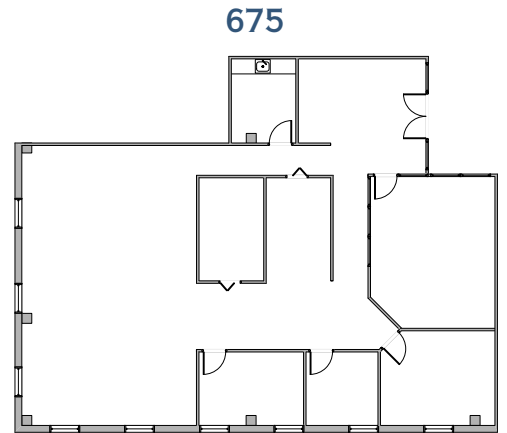
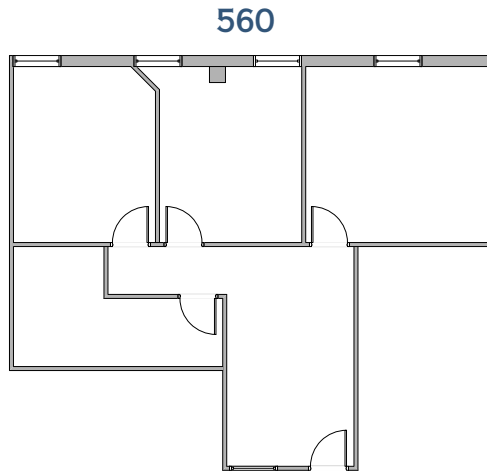
FOR LEASING INFORMATION, PLEASE CONTACT:
 ARMANDO MAGANA | (713) 494-8790
 ARMANDOMAGANA@AMERICANCAPITALPROPERTIESLLC.COM

FOR OTHER AVAILABILITY, VISIT US AT WWW.ACP-SW.COM

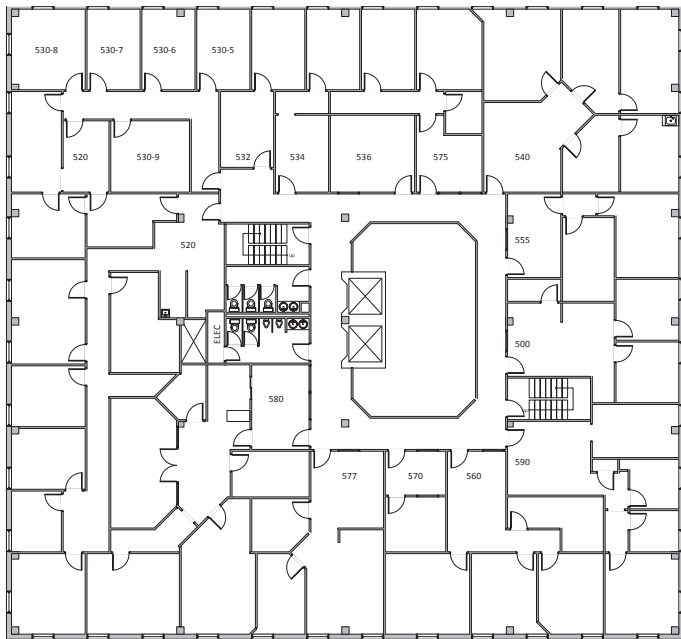
AVAILABLE SUITES | 5TH - 6TH FLOORS

SUITE	SQ FT
560	1,124
675	3,068*

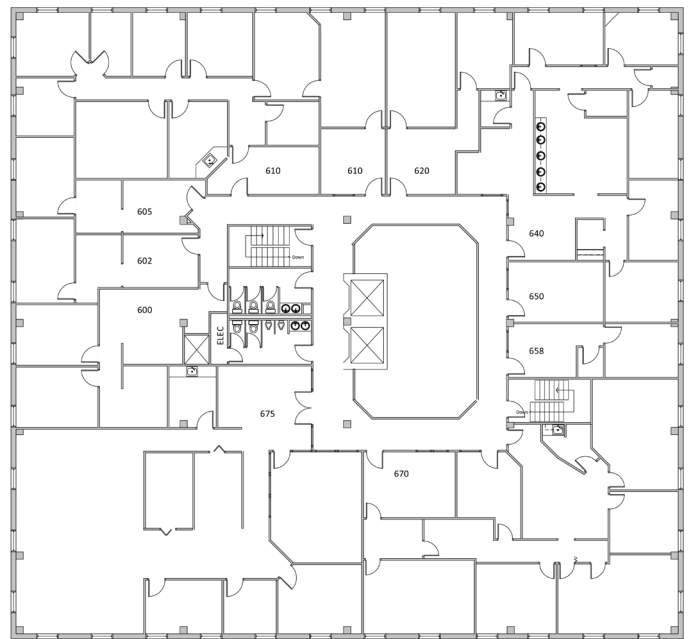
* Smaller units available within Suite 675: A - 225, B - 147, C - 190



5TH FLOOR



6TH FLOOR



FOR LEASING INFORMATION, PLEASE CONTACT:
 ARMANDO MAGANA | (713) 494-8790
 ARMANDOMAGANA@AMERICANCAPITALPROPERTIESLLC.COM

FOR OTHER AVAILABILITY, VISIT US AT WWW.ACP-SW.COM