

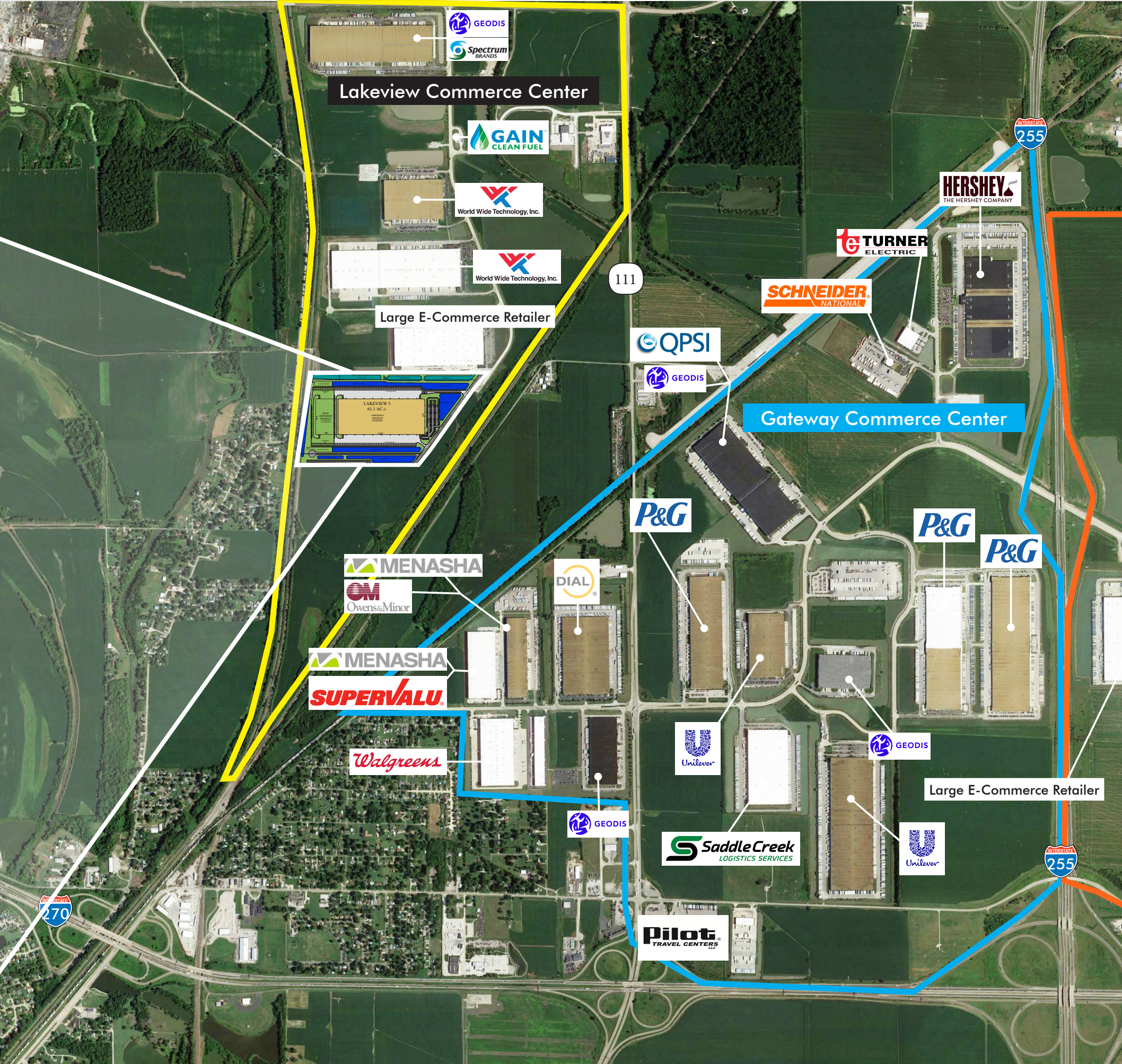
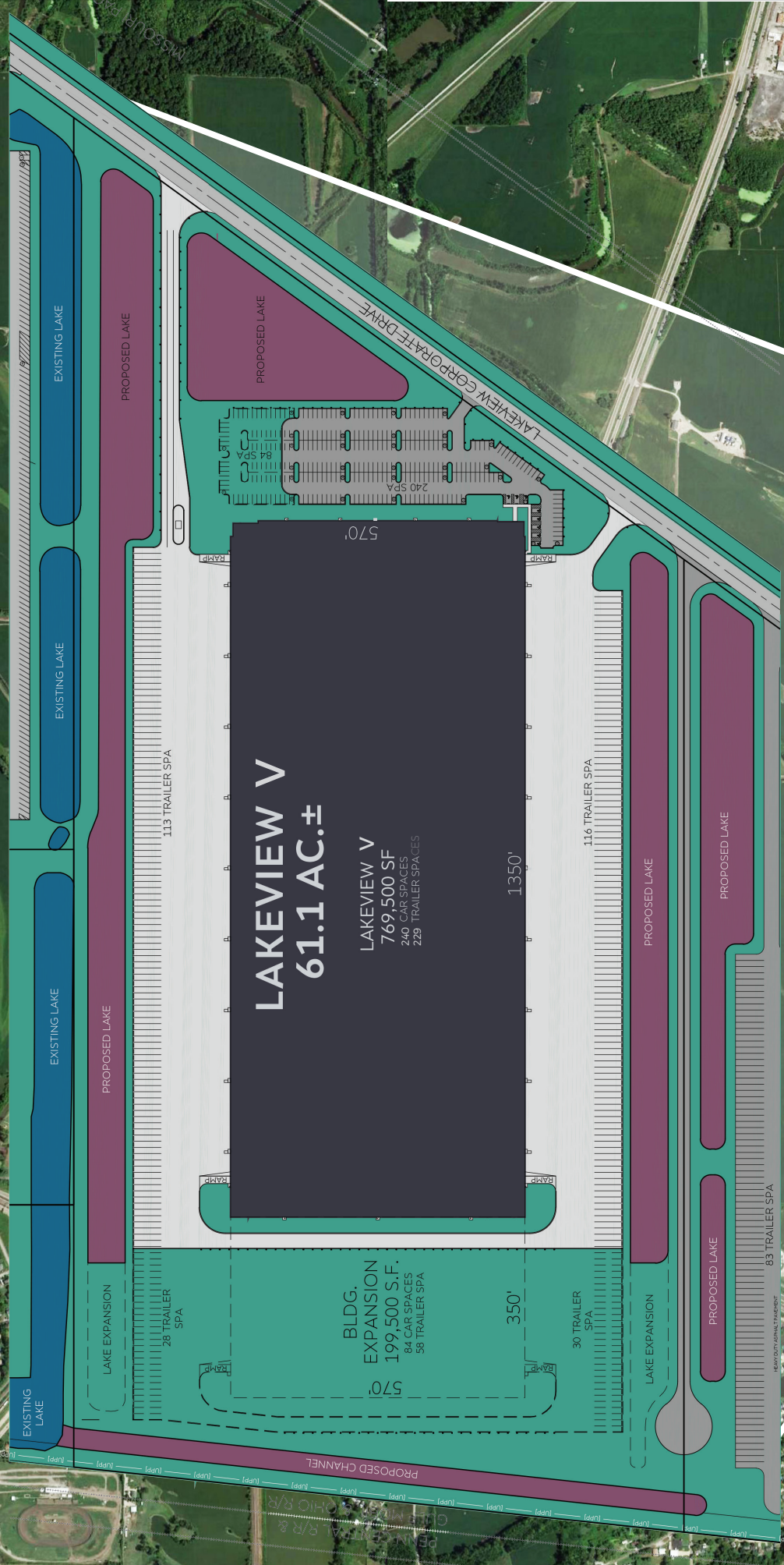
LAKEVIEW V

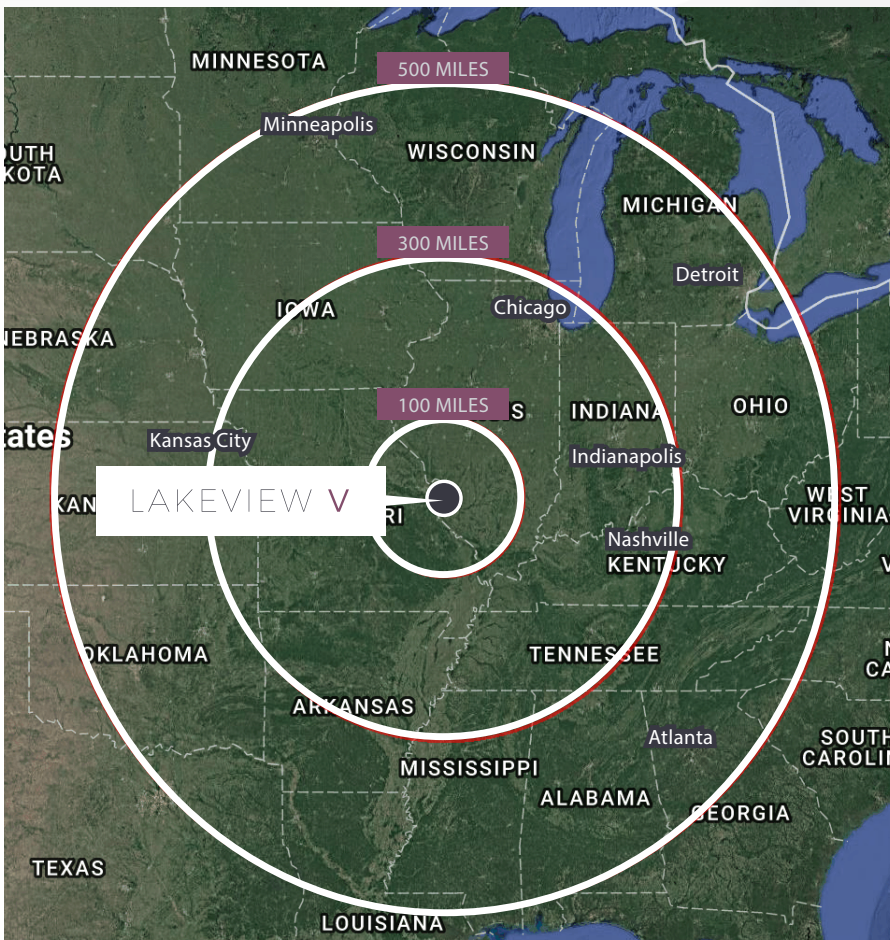
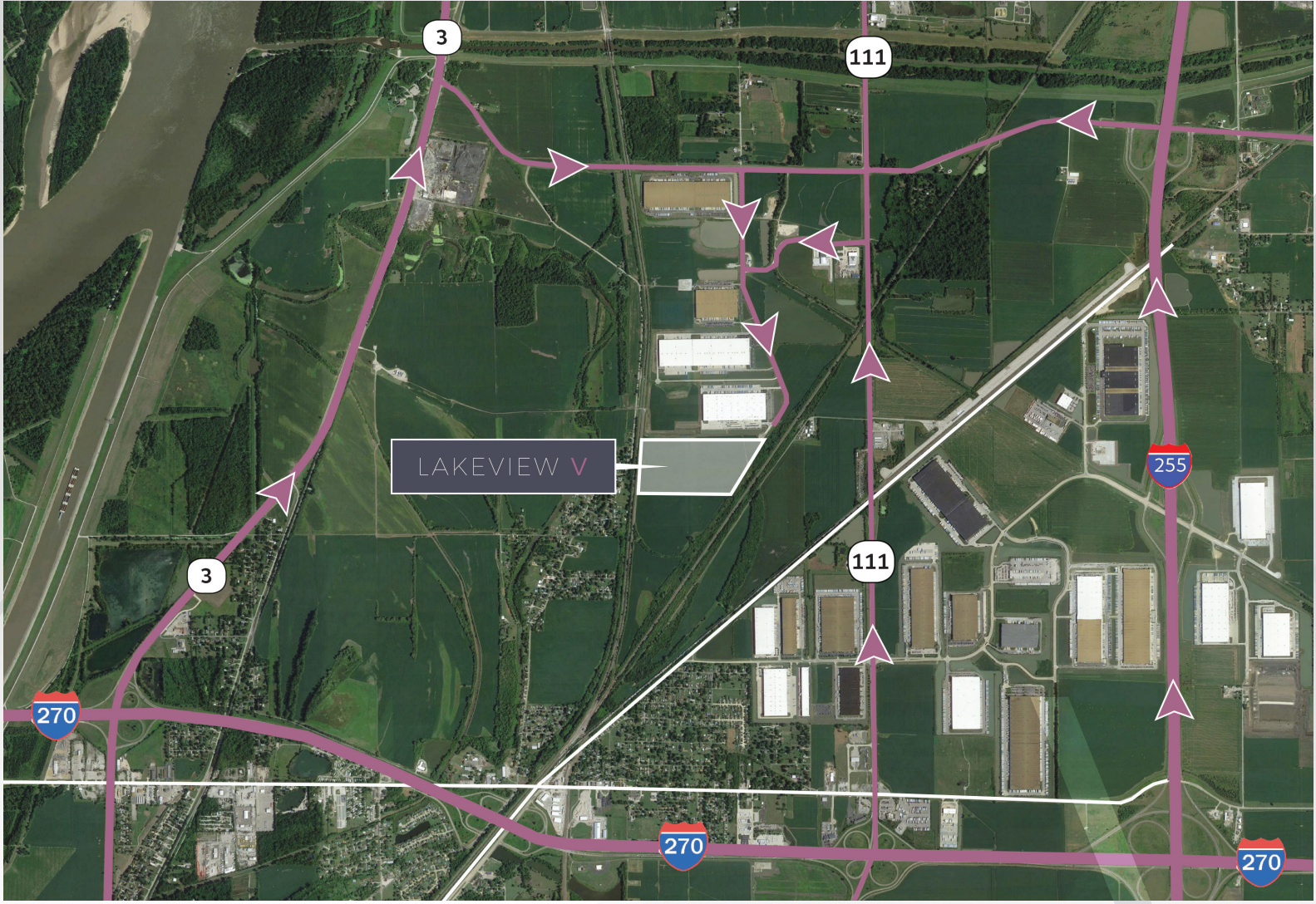
LAKEVIEW COMMERCE CENTER | EDWARDSVILLE IL 62025



PROPERTY FEATURES

- 769,500 sf expandable up to 1MSF
- Divisible
- 36' clear height
- 61.1 acres
- 50'x50' loading bay (60' loading bay)
- 570' depth
- 104 docks (expandable to 152)
- 4 drive-ins
- 240 car parking (expandable)
- 229 trailer parking (expandable)
- ESFR fire suppression
- Available 2nd Quarter 2018
- 10-year tax abatement





FOR MORE INFORMATION
PLEASE CONTACT

KATIE HAYWOOD
+1 314 655 5838
katie.haywood@cbre.com

JON HINDS, SIOR
+1 314 655 6026
jon.hinds@cbre.com

© 2018 CBRE, Inc. All rights reserved. This information has been obtained from sources believed reliable, but has not been verified for accuracy or completeness. Any projections, opinions, or estimates are subject to uncertainty. The information may not represent the current or future performance of the property. You and your advisors should conduct a careful, independent investigation of the property and verify all information. Any reliance on this information is solely at your own risk. CBRE and the CBRE logo are service marks of CBRE, Inc. and/or its affiliated or related companies in the United States and other countries. All other marks displayed on this document are the property of their respective owners. Photos herein are the property of their respective owners and use of these images without the express written consent of the owner is prohibited. PMSstudio_February2018