



Dental Suites Available for Lease Adjacent to Chandler Regional Medical Center

Partnership. Performance.



FOR LEASE

CHANDLER MEDICAL DENTAL CENTER

Located adjacent to the South of Dignity Health Chandler Regional Medical Center. Suites have a modern dental build-out. Easy freeway access to Loop 202 and 101 freeways

655

**S. DOBSON ROAD
BUILDING B**

CHANDLER, AZ 85224

Alexandra J. Loye
Principal
602.625.4220
alexandra.loye@avisonyoung.com



REVISED: 09/21/2017



For Lease

Multi-Tenant Medical/Dental Building in Chandler

Property Information

| | |
|------------------------------|---|
| Building Size: | 22,537 SF |
| Availability: | |
| Suite 211 | 2,060 RSF (fully built-out dental suite with 6 operatories) |
| Suite 214 | 3,667 RSF (fully built-out dental suite with 8 operatories) |
| Lease Rate: | \$21.00/RSF (NNN) |
| Estimated 2017 NNN's: | \$7.58/SF |
| Parking: | 5.9:1,000 SF with covered reserved parking available |

Features:

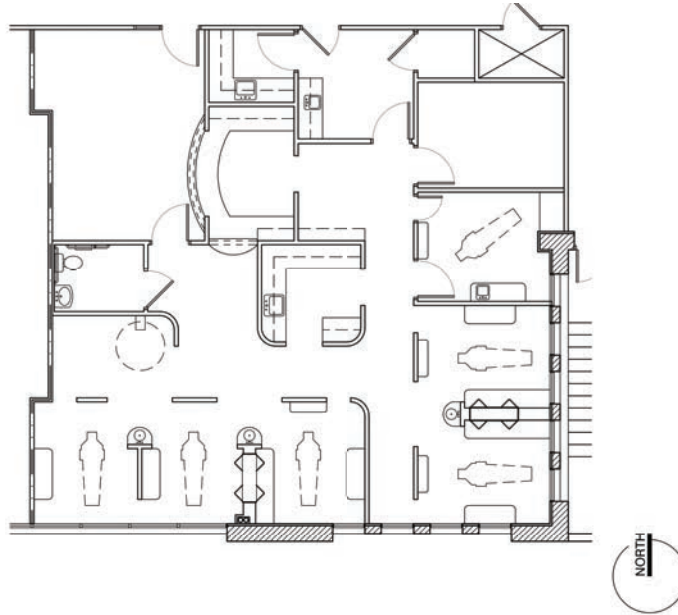
- Located adjacent to the South of Dignity Health Chandler Regional Medical Center.
- Suites have a modern dental build-out equipment is not included.
- Well maintained medical/dental building.
- Easy freeway access to Loop 202 and 101 freeways.



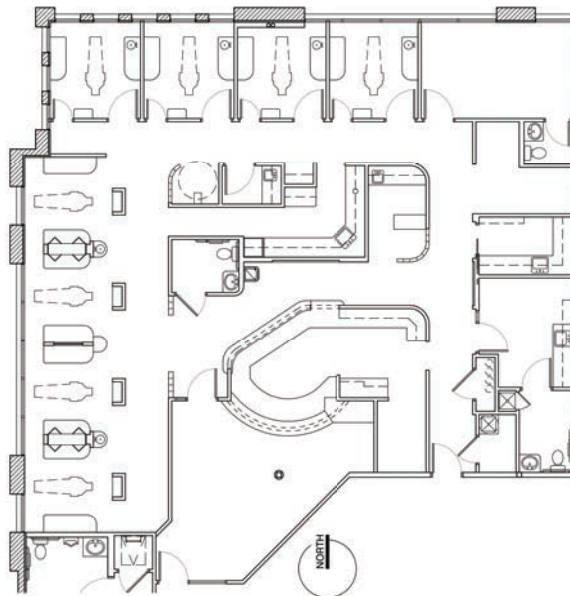
Partnership. Performance.

Alexandra J. Loye
Principal
602.625.4220
alexandra.loye@avisonyoung.com

Suite 211: 2,060 (fully built-out dental suite with 6 operatories)

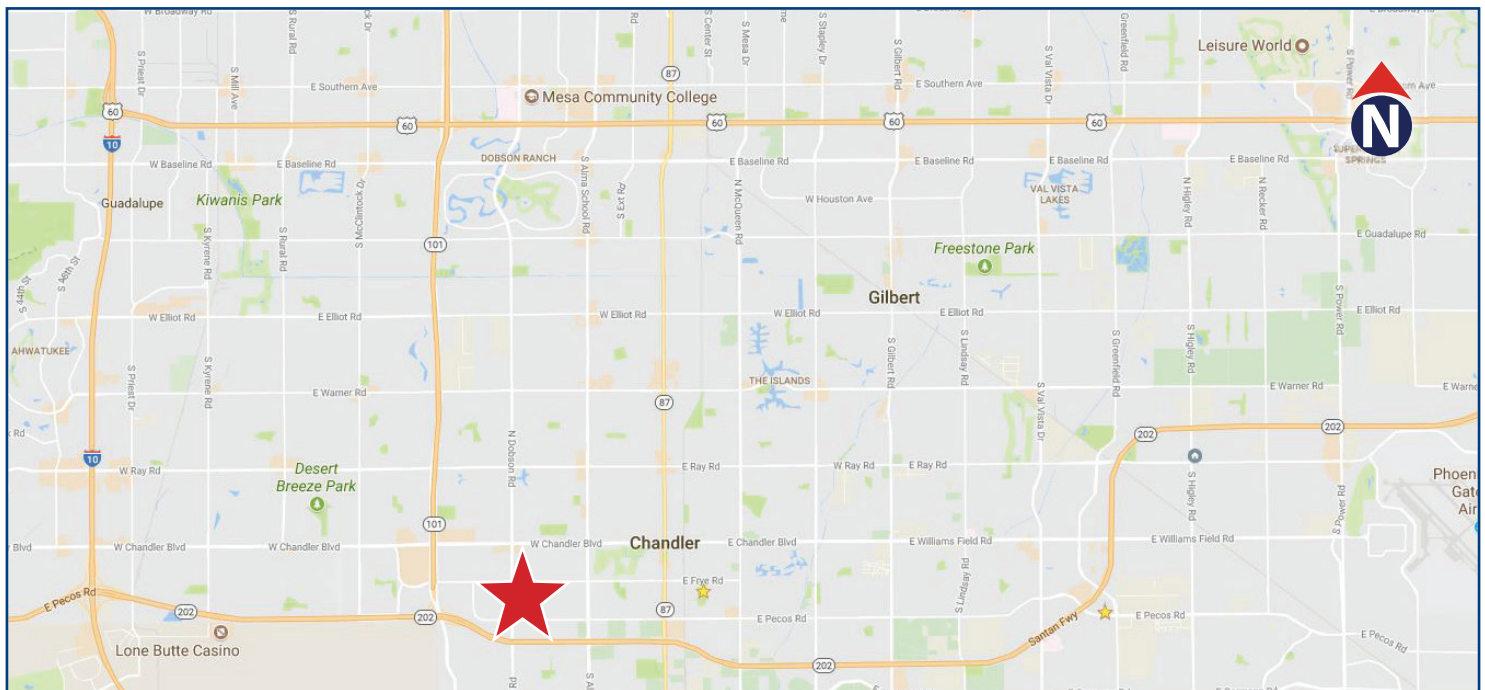


Suite 214: 3,667 (fully built-out dental suite with 8 operatories)



Partnership. Performance.

Alexandra J. Loye
Principal
602.625.4220
alexandra.loye@avisonyoung.com



Partnership. Performance.

Alexandra J. Loye
Principal
602.625.4220
alexandra.loye@avisonyoung.com