



FOR LEASE | OFFICE SPACE

Water Gardens | 100 East 15th Street, | Fort Worth, Texas



\$17.00/RSF. + ELEC

LEASE RATE

Building Size: 91,209 SF.

Building Information

- Ground Floor Availability
- On-Site Security
- Covered & Surface Parking Available
- Walking distance to Omni, Sheraton & the Convention Center
- Overlooks The Water Gardens
- Lunchline to Sundance Square
- Quick access to I-35, I-30 & Chisholm Trail Parkway

Available Space

- 1,020 RSF. - Suite 110
- 5,473 RSF. - Suite 120
- 3,001 RSF. - Suite 300
- 2,312 RSF. - Suite 350
- 4,577 RSF. - Suite 400
- 2,240 RSF. - Suite 415 - Available 8/1/2018
- 2,640 RSF. - Suite 640

PROPERTY CONTACT

JACK A. CLARK	817.336.4002	JCLARK@ROREALTY.COM
STEPHANIE GWIZDZ	817.336.4007	SGWIZDZ@ROREALTY.COM
MAIN OFFICE	817.877.3300	ROREALTY.COM
FAX	817.877.3310	

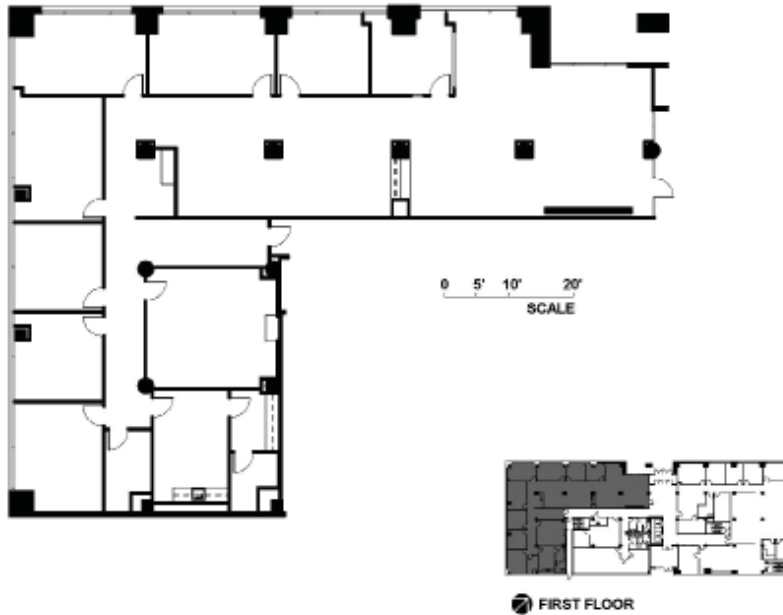
The information contained in this property flyer is deemed to be reliable. Every effort was made to obtain accurate and complete information: however no representation, warranty or guarantee, expressed or implied, may be made as to the accuracy or reliability of the information contained herein.



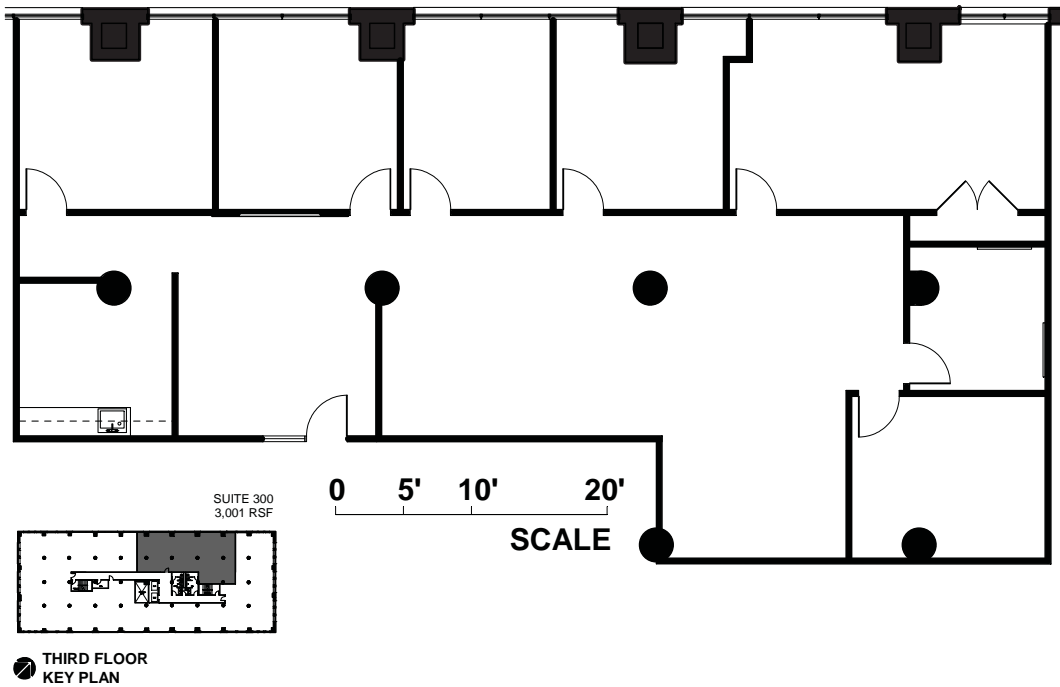
FOR LEASE | OFFICE SPACE

Water Gardens | 100 East 15th Street, | Fort Worth, Texas

SUITE 120 | 5,473 RSF



SUITE 300 | 3,001 RSF.



PROPERTY CONTACT

JACK A. CLARK	817.336.4002	JCLARK@ROREALTY.COM
STEPHANIE GWIZDZ	817.336.4007	SGWIZDZ@ROREALTY.COM
MAIN OFFICE	817.877.3300	ROREALTY.COM
FAX	817.877.3310	

The information contained in this card is deemed to be reliable. Every effort was made to obtain accurate and complete information; however no representation, warranty or guarantee, expressed or implied, may be made as to the accuracy or reliability of the information contained herein.