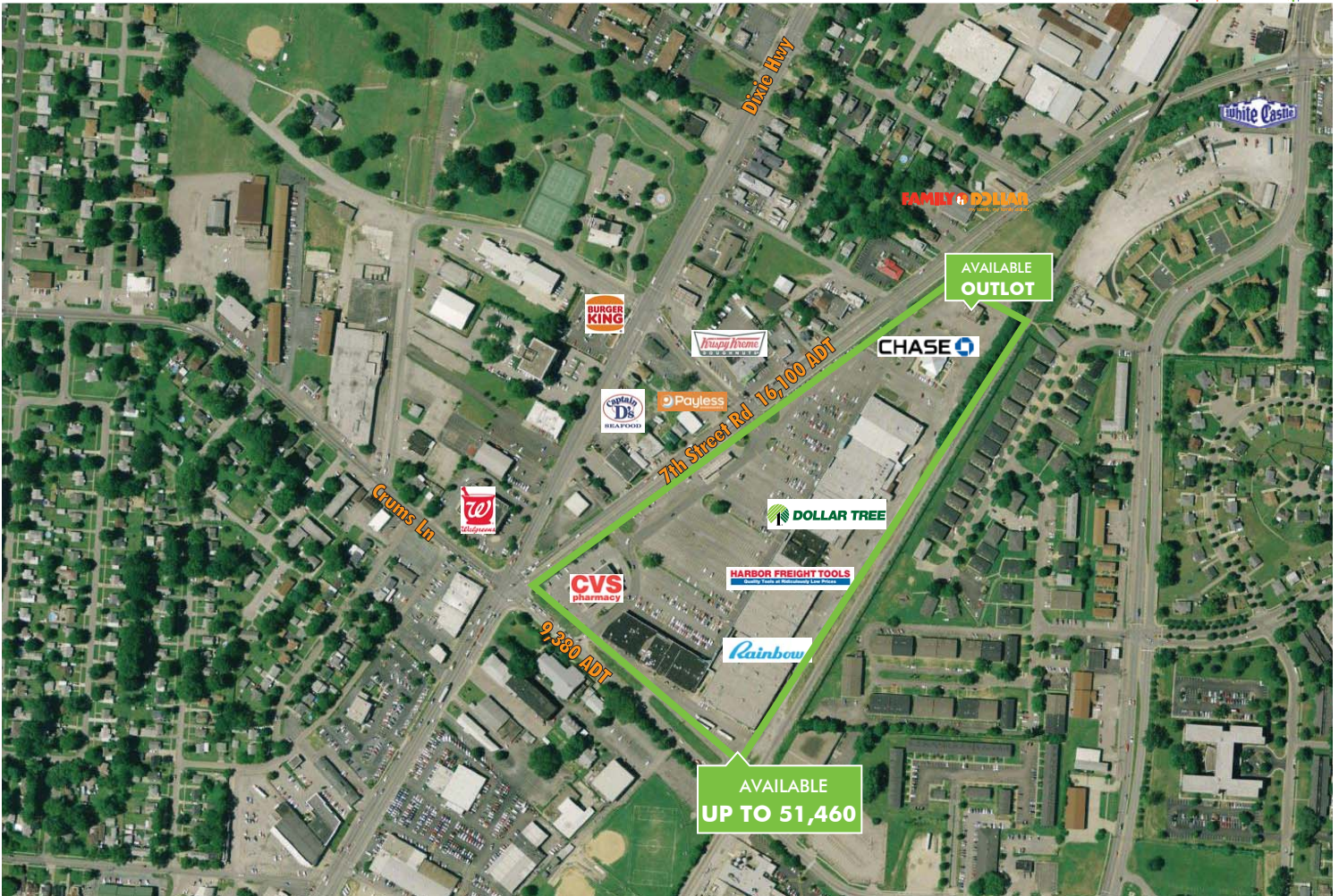


FOR LEASE

Southland Terrace

3923 S. SEVENTH STREET ROAD, LOUISVILLE, KENTUCKY

RETAIL



ANCHOR OPPORTUNITY

OUTLOT & INLINE SPACE AVAILABLE

- + Up to 51,460± SF available
- + Small shop space & outlots available
- + 1.14± acre lot available adjacent to Chase Bank
- + Tenants include Rainbow Shops, Harbor Freight Tools, Dollar Tree, & Shoe Show
- + Primary retail shopping center for the Shively area
- + Signalized entrance from S. Seventh Street Road with excellent visibility
- + Traffic count: 16,100 ADT on S. Seventh Street Rd; 9,380 ADT on Crums Lane

FOR LEASE

Southland Terrace

3923 S. SEVENTH STREET ROAD, LOUISVILLE, KENTUCKY

RETAIL



Southland Terrace
Louisville, KY

FOR LEASE

Southland Terrace

3923 S. SEVENTH STREET ROAD, LOUISVILLE, KENTUCKY

RETAIL

	1 MILE	3 MILES	5 MILES
PLACE OF WORK			
2017 Businesses	351	2,457	7,536
2017 Employees	4,048	38,746	152,678
POPULATION			
2017 Population - Current Year Estimate	14,537	106,061	235,087
2022 Population - Five Year Projection	14,886	108,071	239,436
EDUCATION	1 MILE	3 MILES	5 MILES
2017 Population 25 and Over	9,638	70,152	157,421
Less than 9th Grade	667 6.9%	3,843 5.5%	7,308 4.6%
9-12th Grade - No Diploma	1,072 11.1%	8,624 12.3%	18,431 11.7%
High School Diploma	2,992 31.0%	19,239 27.4%	42,395 26.9%
GED or Alternative Credential	757 7.9%	5,470 7.8%	11,880 7.5%
Some College - No Degree	2,095 21.7%	18,005 25.7%	38,269 24.3%
Associate`s Degree	843 8.7%	5,702 8.1%	12,257 7.8%
Bachelor`s Degree	659 6.8%	5,728 8.2%	15,658 9.9%
Graduate or Professional Degree	553 5.7%	3,541 5.0%	11,223 7.1%
HOUSEHOLDS	1 MILE	3 MILES	5 MILES
2017 Households - Current Year Estimate	5,944	42,712	96,591
2022 Households - Five Year Projection	6,077	43,468	98,431
2010 Households - Census	5,783	42,087	94,882
2000 Households - Census	6,089	43,406	96,723
2010-2017 Annual Household Growth Rate	0.38%	0.20%	0.25%
2017-2022 Annual Household Growth Rate	0.44%	0.35%	0.38%
2017 Average Household Size	2.41	2.44	2.36
HOUSEHOLD INCOME			
2017 Median Household Income	\$28,291	\$35,061	\$34,638
2022 Median Household Income	\$29,000	\$36,941	\$36,669
2017 Per Capita Income	\$17,228	\$19,139	\$20,141
2022 Per Capita Income	\$18,892	\$21,442	\$22,661

CONTACT US

Scott Gilmore

Vice President
+1 502 412 7639
scott.gilmore@cbre.com

Clay Hunt

Senior Associate
+1 502 412 7607
clay.hunt@cbre.com

Robert Schwartz

Senior Vice President
+1 502 412 7606
robert.schwartz@cbre.com

© 2018 CBRE, Inc. All rights reserved. This information has been obtained from sources believed reliable, but has not been verified for accuracy or completeness. You should conduct a careful, independent investigation of the property and verify all information. Any reliance on this information is solely at your own risk. CBRE and the CBRE logo are service marks of CBRE, Inc. All other marks displayed on this document are the property of their respective owners. Photos herein are the property of their respective owners. Use of these images without the express written consent of the owner is prohibited.