

OFFICE SUITES FOR LEASE

5435 - 5445 Balboa Blvd, Encino



FEATURES

- Just Off Of The 101 Freeway
- Value Priced For Encino
- Property Renovations Underway
- **AT&T U-verse Fiber Now Available!**

AVAILABLE

Suite	Size
102	1,164 RSF
103	2,738 RSF
104	867 RSF
105	2,373 RSF
110	1,021 RSF
205	1,128 RSF
206	721 RSF
207	1,877 RSF
212	1,190 RSF
Part 2nd Flr	7,640 RSF

PARKING *(per stall)*

3/1,000	
\$80	Unreserved
\$110	Reserved

LEASE RATE

\$2.15 PSF FSG

For more information please contact

Darren Casamassima
818.933.0303
dc@lee-re.com
BRE# 01425638

Scott Romick
818.933.0305
sromick@lee-re.com
BRE# 01323527

Jeremy Mintz
818.933.0308
jmintz@lee-re.com
BRE# 02041900

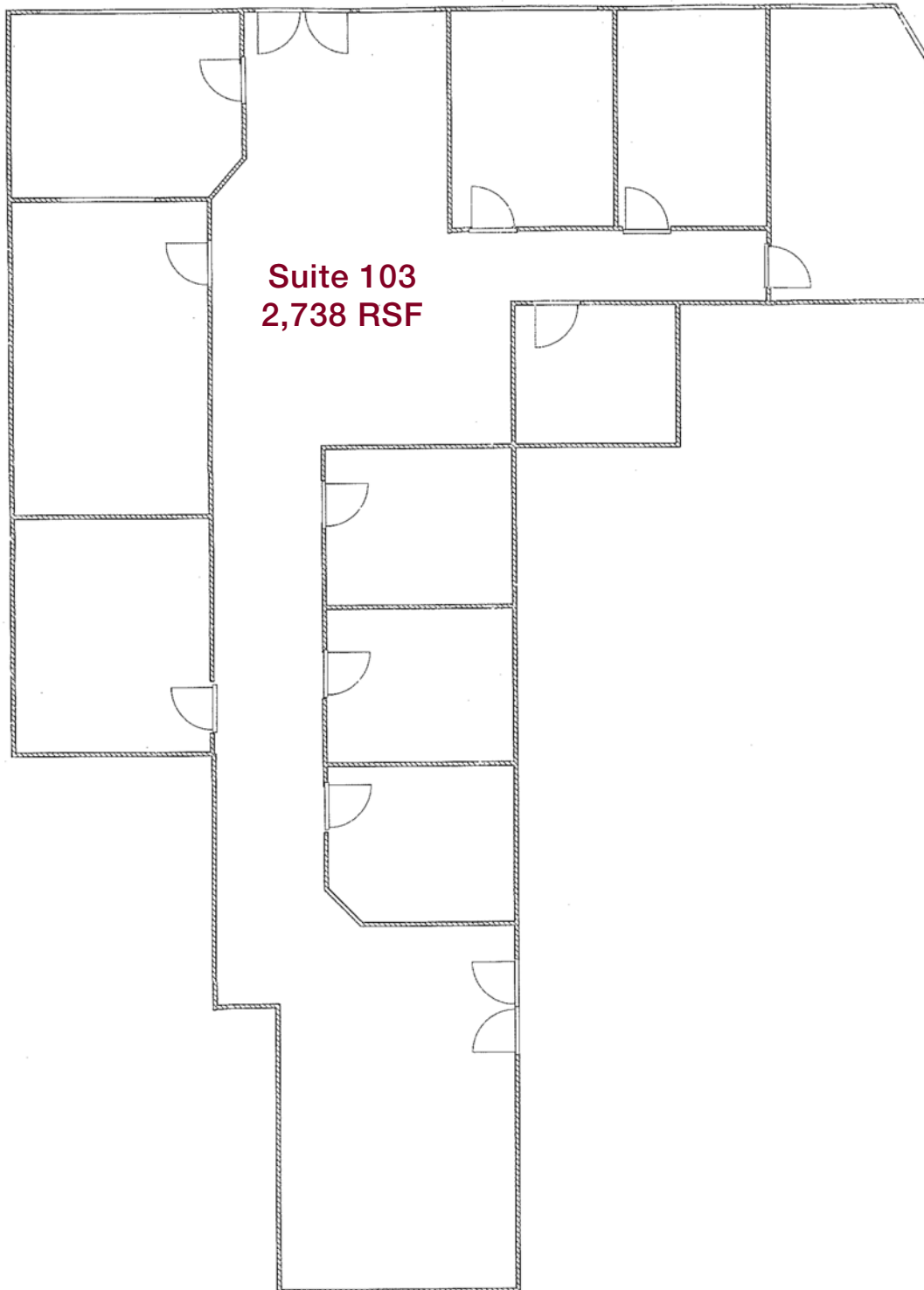


No warranty or representation is made to the accuracy of the foregoing information. Terms of sale or lease and availability are subject to change or withdrawal without notice.

Lee & Associates® - LA North/Ventura, Inc. • Corporate ID #01191898
A Member of the Lee & Associates® Group of Companies
15250 Ventura Blvd., Suite 100 • Sherman Oaks, CA 91403
P:818.986.9800 F:818.933.0405 • www.lee-associates.com

OFFICE SUITES FOR LEASE

5435 - 5445 Balboa Blvd, Encino



NOT TO SCALE

For more information please contact:

Darren Casamassima
818.933.0303
dc@lee-re.com
BRE# 01425638

Scott Romick
818.933.0305
sromick@lee-re.com
BRE# 01323527

Jeremy Mintz
818.933.0308
jmintz@lee-re.com
BRE# 02041900

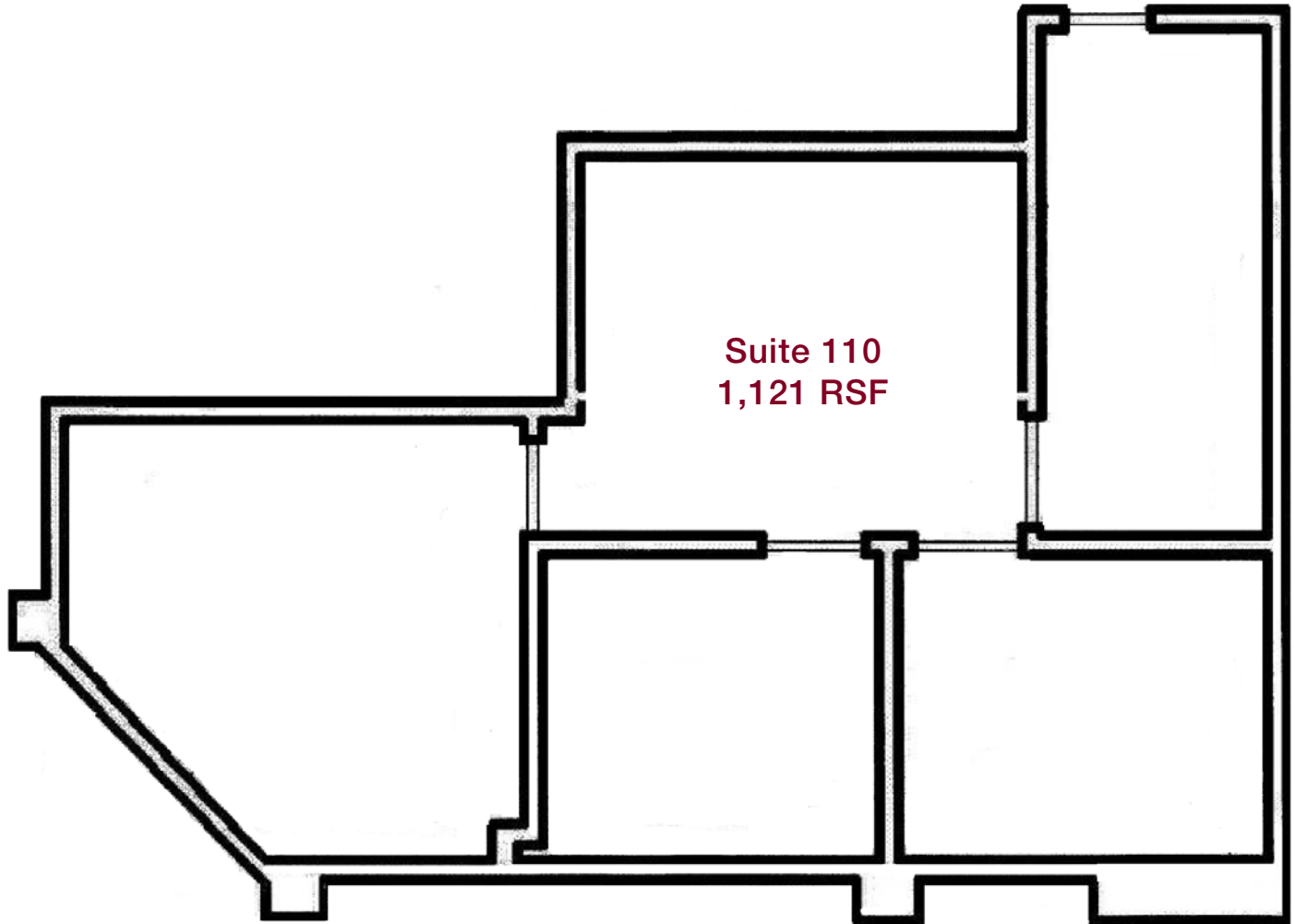
LEE & ASSOCIATES
COMMERCIAL REAL ESTATE SERVICES

Lee & Associates® - LA NorthVentura, Inc. • Corporate ID #01191898
A Member of the Lee & Associates® Group of Companies
15250 Ventura Blvd., Suite 100 • Sherman Oaks, CA 91403
P:818.986.9800 F:818.933.0405 • www.lee-associates.com

No warranty or representation is made to the accuracy of the foregoing information. Terms of sale or lease and availability are subject to change or withdrawal without notice.

OFFICE SUITES FOR LEASE

5435 - 5445 Balboa Blvd, Encino



NOT TO SCALE

For more information please contact:

Darren Casamassima
818.933.0303
dc@lee-re.com
BRE# 01425638

Scott Romick
818.933.0305
sromick@lee-re.com
BRE# 01323527

Jeremy Mintz
818.933.0308
jmintz@lee-re.com
BRE# 02041900

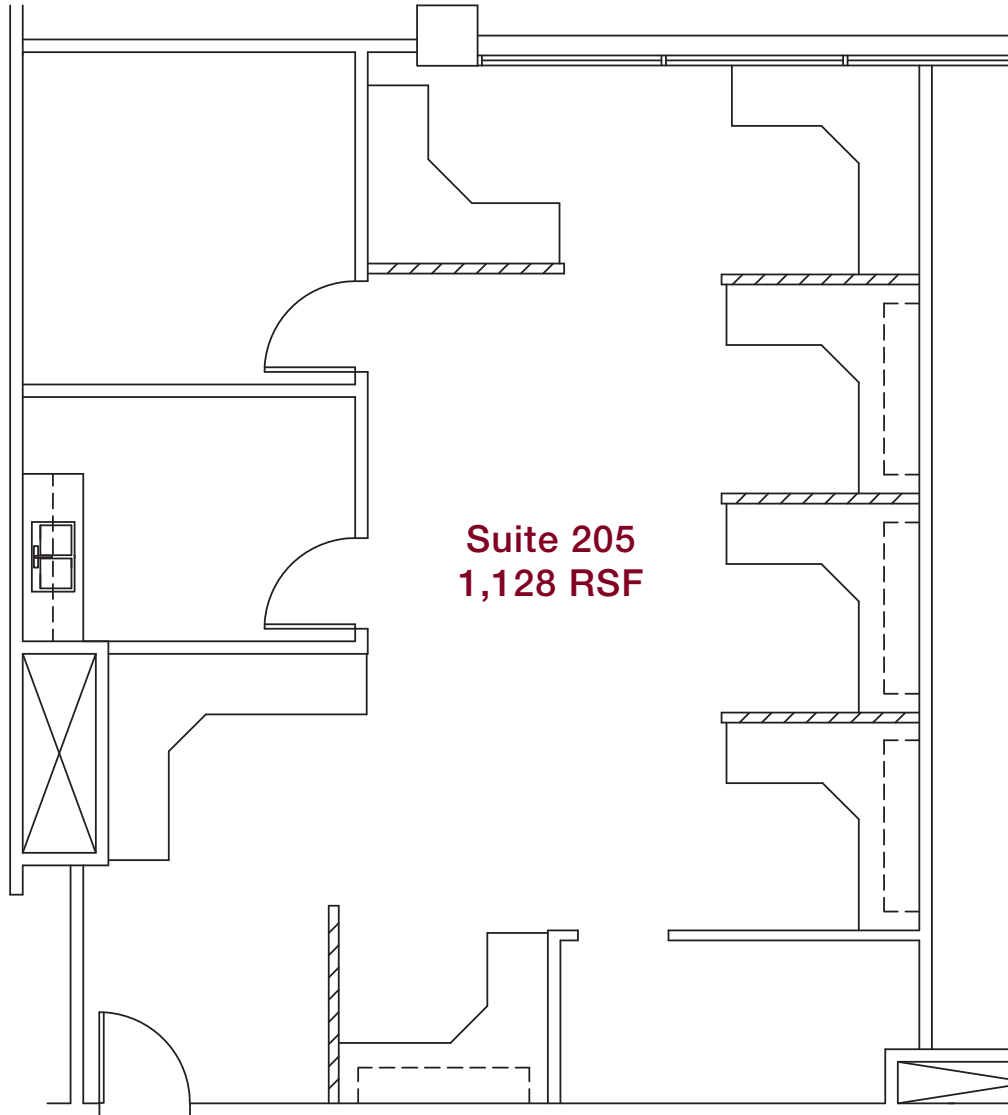


Lee & Associates® - LA NorthVentura, Inc. • Corporate ID #01191898
A Member of the Lee & Associates® Group of Companies
15250 Ventura Blvd., Suite 100 • Sherman Oaks, CA 91403
P:818.986.9800 F:818.933.0405 • www.lee-associates.com

No warranty or representation is made to the accuracy of the foregoing information. Terms of sale or lease and availability are subject to change or withdrawal without notice.

OFFICE SUITES FOR LEASE

5435 - 5445 Balboa Blvd, Encino



NOT TO SCALE

For more information please contact:

Darren Casamassima
818.933.0303
dc@lee-re.com
BRE# 01425638

Scott Romick
818.933.0305
sromick@lee-re.com
BRE# 01323527

Jeremy Mintz
818.933.0308
jmintz@lee-re.com
BRE# 02041900

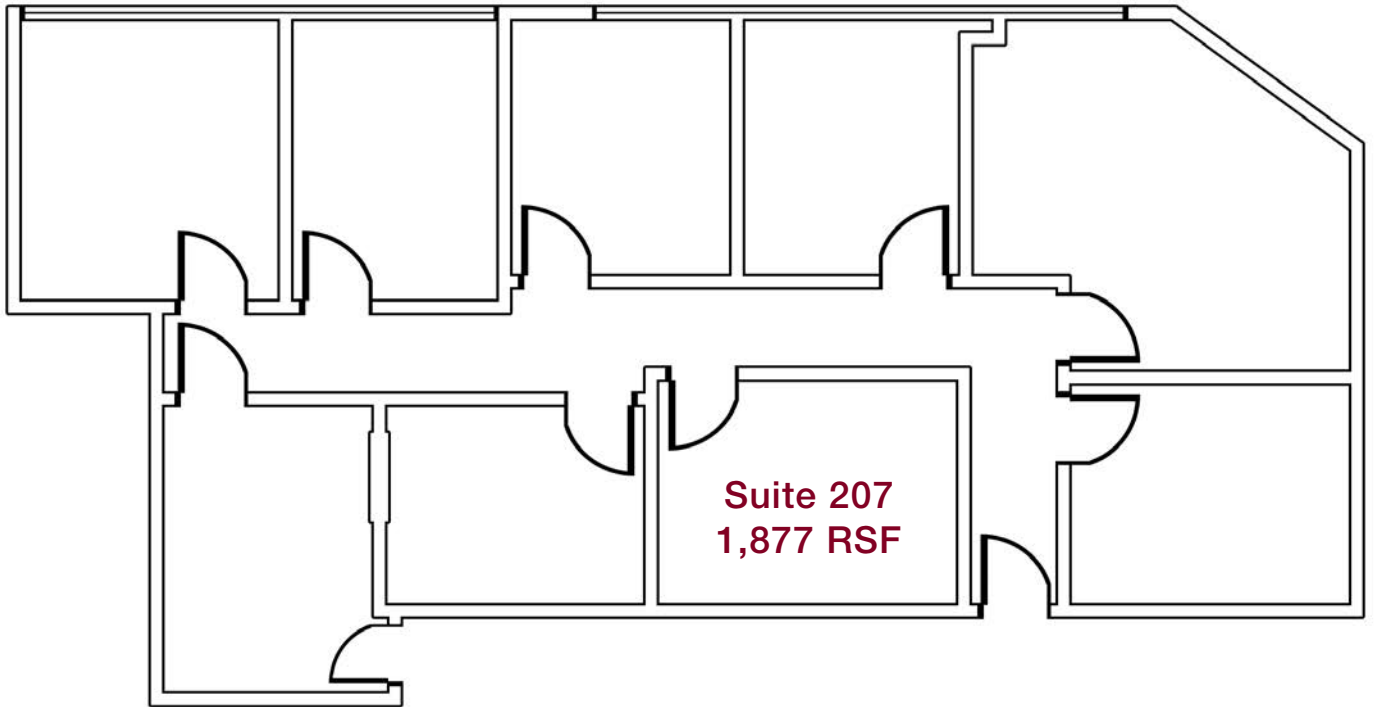
LEE & ASSOCIATES
COMMERCIAL REAL ESTATE SERVICES

Lee & Associates® - LA NorthVentura, Inc. • Corporate ID #01191898
A Member of the Lee & Associates® Group of Companies
15250 Ventura Blvd., Suite 100 • Sherman Oaks, CA 91403
P:818.986.9800 F:818.933.0405 • www.lee-associates.com

No warranty or representation is made to the accuracy of the foregoing information. Terms of sale or lease and availability are subject to change or withdrawal without notice.

OFFICE SUITES FOR LEASE

5435 - 5445 Balboa Blvd, Encino



NOT TO SCALE

For more information please contact:

Darren Casamassima
818.933.0303
dc@lee-re.com
BRE# 01425638

Scott Romick
818.933.0305
sromick@lee-re.com
BRE# 01323527

Jeremy Mintz
818.933.0308
jmintz@lee-re.com
BRE# 02041900

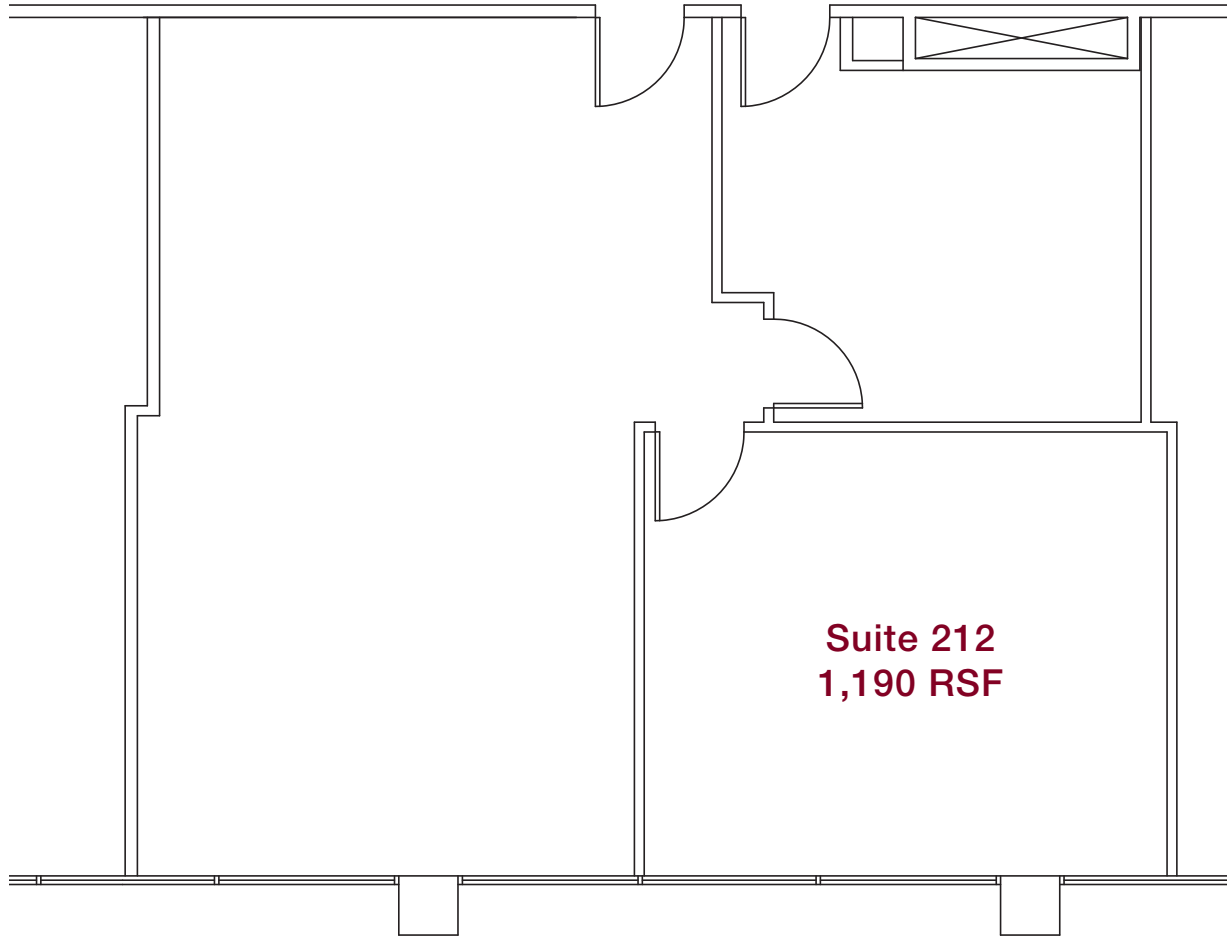


Lee & Associates® - LA North/Ventura, Inc. • Corporate ID #01191898
A Member of the Lee & Associates® Group of Companies
15250 Ventura Blvd., Suite 100 • Sherman Oaks, CA 91403
P:818.986.9800 F:818.933.0405 • www.lee-associates.com

No warranty or representation is made to the accuracy of the foregoing information. Terms of sale or lease and availability are subject to change or withdrawal without notice.

OFFICE SUITES FOR LEASE

5435 - 5445 Balboa Blvd, Encino



Suite 212
1,190 RSF

NOT TO SCALE

For more information please contact:

Darren Casamassima
818.933.0303
dc@lee-re.com
BRE# 01425638

Scott Romick
818.933.0305
sromick@lee-re.com
BRE# 01323527

Jeremy Mintz
818.933.0308
jmintz@lee-re.com
BRE# 02041900

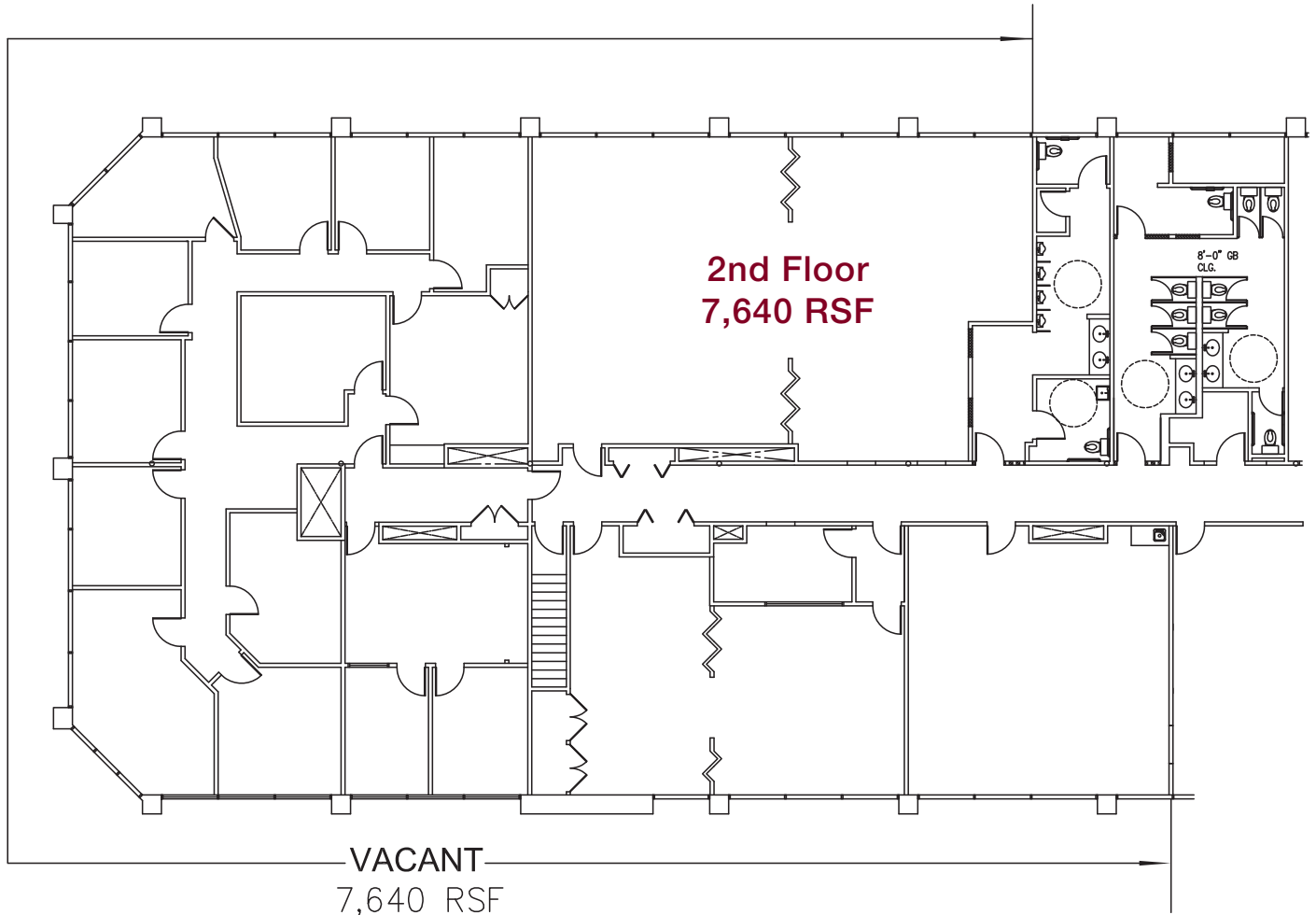


Lee & Associates® - LA North/Ventura, Inc. • Corporate ID #01191898
A Member of the Lee & Associates® Group of Companies
15250 Ventura Blvd., Suite 100 • Sherman Oaks, CA 91403
P:818.986.9800 F:818.933.0405 • www.lee-associates.com

No warranty or representation is made to the accuracy of the foregoing information. Terms of sale or lease and availability are subject to change or withdrawal without notice.

OFFICE SUITES FOR LEASE

5435 - 5445 Balboa Blvd, Encino



NOT TO SCALE

For more information please contact:

Darren Casamassima
818.933.0303
dc@lee-re.com
BRE# 01425638

Scott Romick
818.933.0305
sromick@lee-re.com
BRE# 01323527

Jeremy Mintz
818.933.0308
jmintz@lee-re.com
BRE# 02041900



Lee & Associates® - LA NorthVentura, Inc. • Corporate ID #01191898
A Member of the Lee & Associates® Group of Companies
15250 Ventura Blvd., Suite 100 • Sherman Oaks, CA 91403
P:818.986.9800 F:818.933.0405 • www.lee-associates.com

No warranty or representation is made to the accuracy of the foregoing information. Terms of sale or lease and availability are subject to change or withdrawal without notice.