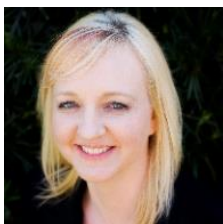


25382 Ipes Rd
Splendora, TX 77372



*Mini Mobile Home Park off of Hwy 59/69 feeder frontage on 1.81 Acres!!
100% occupied = \$2250 monthly income!
City utilities! Room to grow!
Two 2 bedroom and Three 3 bedroom homes*



Tisha Lockwood, BROKER
EngelCo – Lockwood Group
832-233-5354
TishaLockwood@yahoo.com

