

**AVISON
YOUNG**



MEDICAL OFFICE FOR LEASE

6641

E. BAYWOOD AVENUE

Mesa, AZ 85206

Partnership. Performance.

Baywood Medical Plaza

A three building medical project totaling 14,000 SF located directly across the street from Banner Baywood Medical Center, approximately 1.5 miles from US 60 and close to Superstition Springs Mall.



Bret Isbell

Senior Vice President

602.300.4112

bret.isbell@avisonyoung.com

Revised | October 23, 2018



For Lease

Medical Office for Lease



OFFERING SUMMARY

Project Size:	Three Building Medical Project totaling 14,000 SF
Lease Rate:	\$16.50/SF Modified Gross
Availability:	Suite B-1 - 1,804 SF
Year Built:	1985
Parking:	5.7:1,000/SF

PROPERTY HIGHLIGHTS

- Directly across the street from Banner Baywood Medical Center
- Approximately 1.5 miles from US 60
- Close proximity to Superstition Springs Mall and numerous retail and restaurant amenities
- Building and monument signage available
- Covered/Reserved parking available

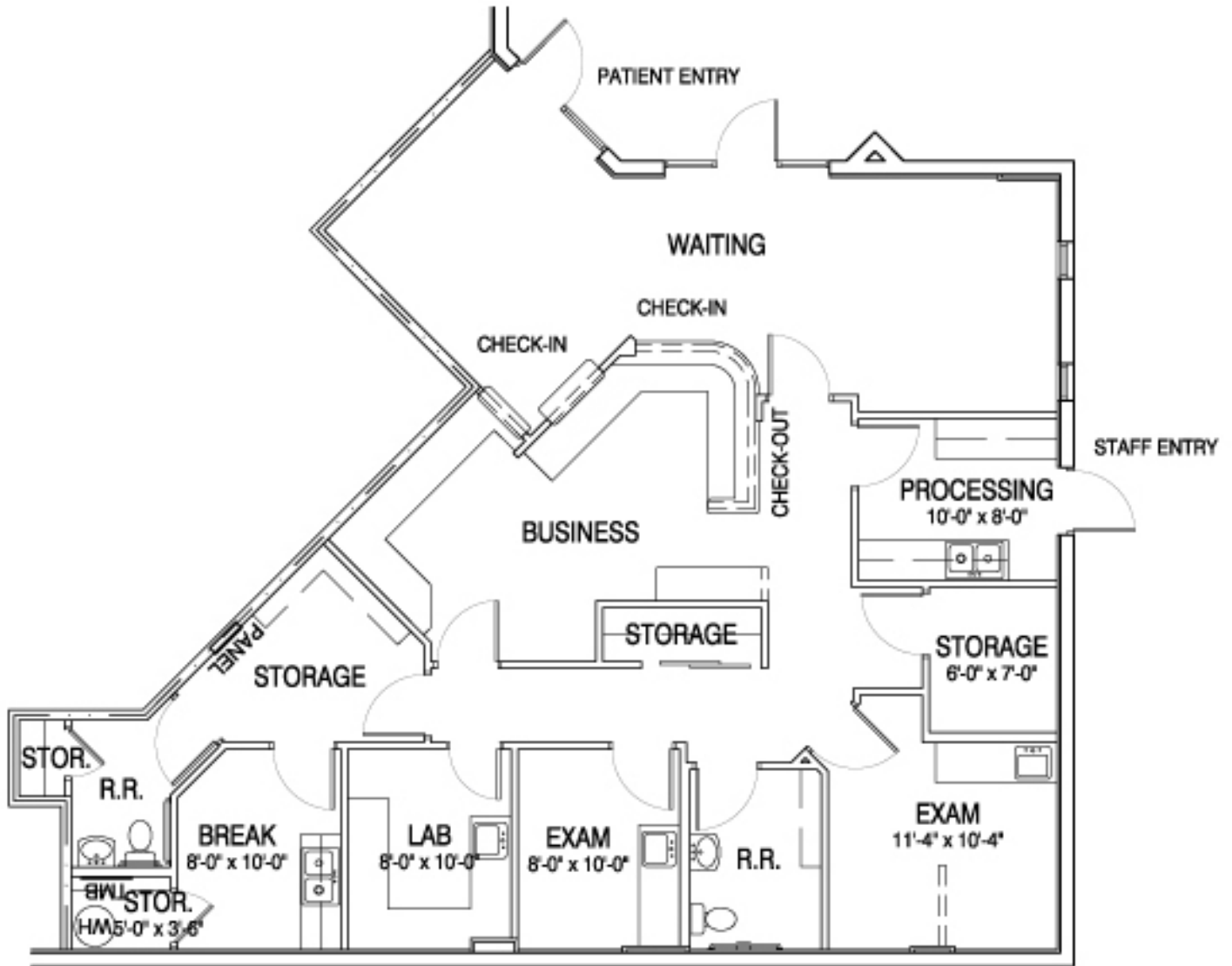


Bret Isbell
602.300.4112
bret.isbell@avisonyoung.com



For Lease

Medical Office for Lease



B-1 SUITE B-1 - 1,804 SF



Bret Isbell
602.300.4112
bret.isbell@avisonyoung.com



For Lease

Medical Office for Lease

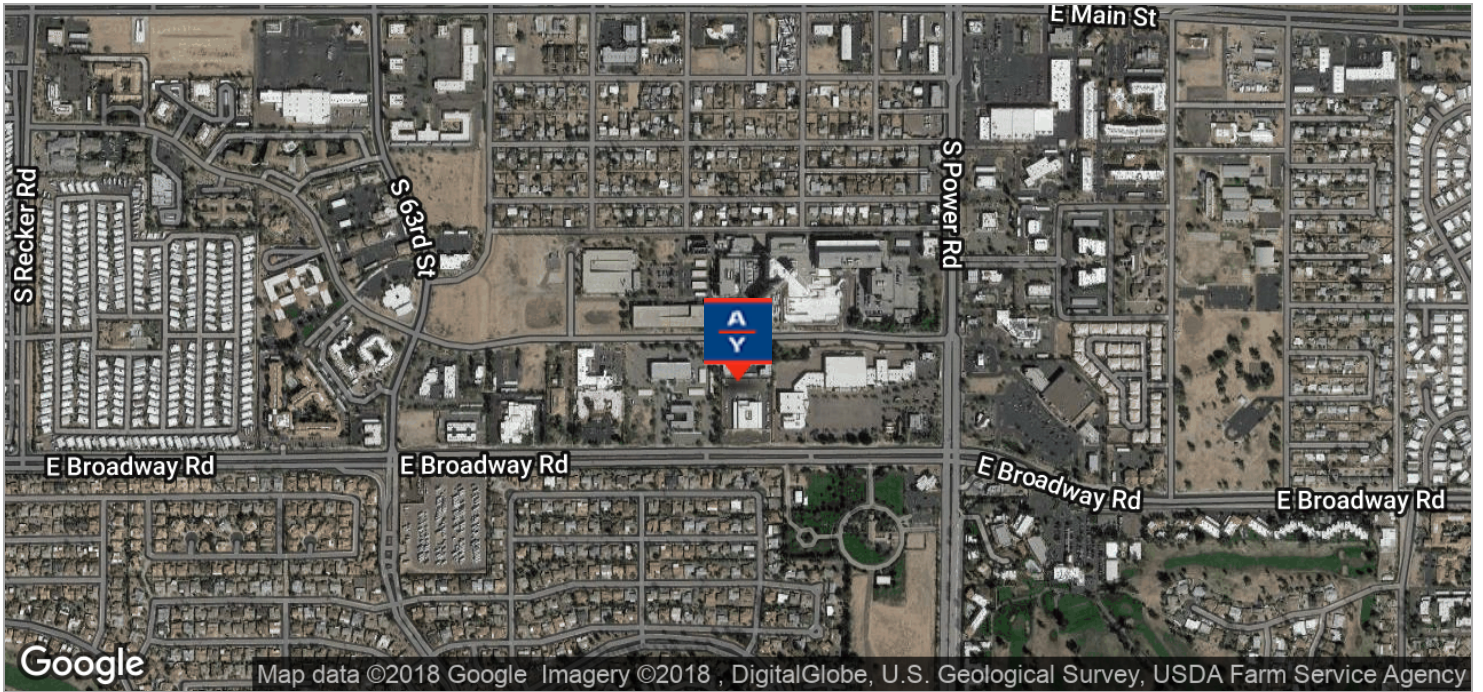


Bret Isbell
602.300.4112
bret.isbell@avisonyoung.com

This message and any attachments are confidential. If the reader is not the intended recipient, you are hereby notified that any dissemination, distribution or copying of this e-mail is strictly prohibited. If you have received this e-mail in error, please notify the sender immediately by return e-mail. Internet communications cannot be guaranteed to be secure or error free as information could be intercepted, corrupted, lost, arrive late or contain viruses. The sender result of Internet transmission.

For Lease

Medical Office for Lease



Bret Isbell
602.300.4112
bret.isbell@avisonyoung.com