

# 2030 TERRY STREET

LONGMONT, CO 80501

OFFICE SPACE FOR LEASE



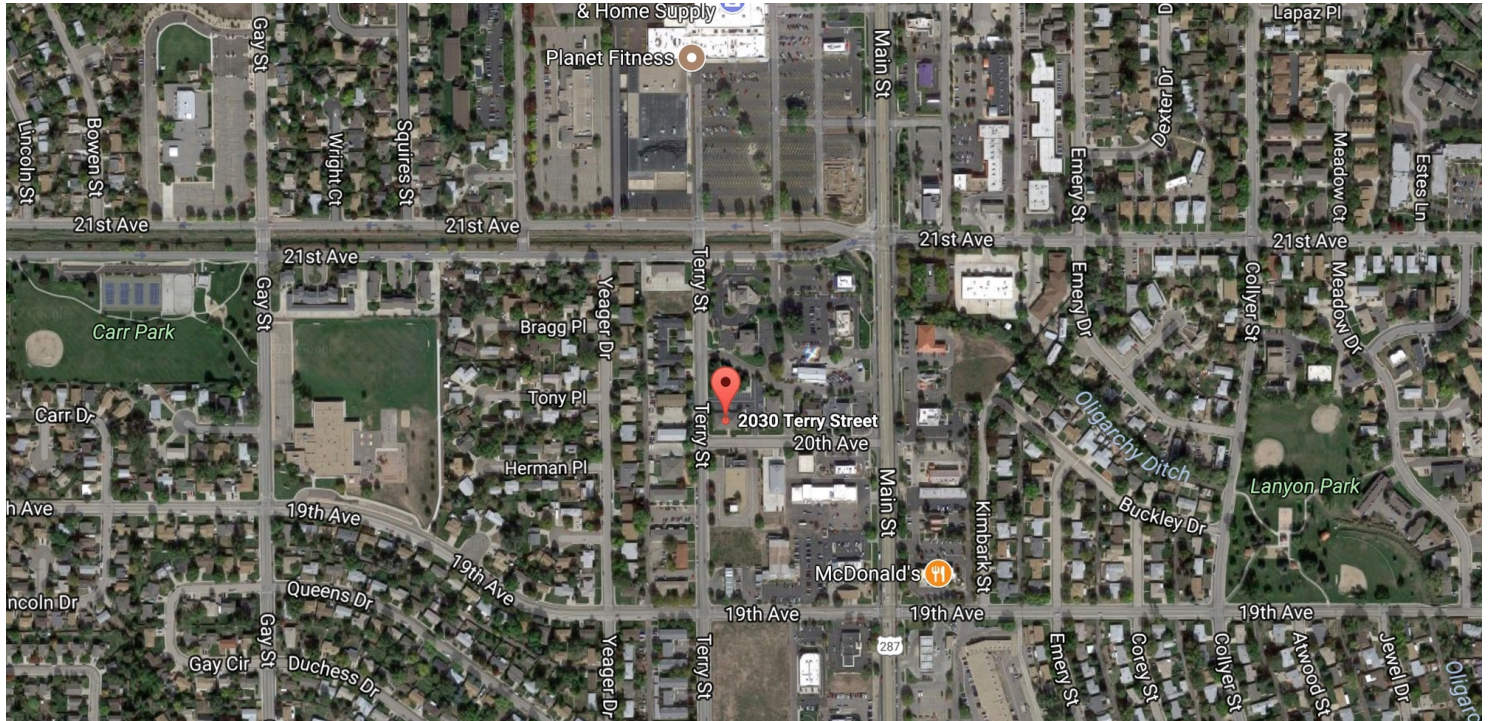
Keith Kanemoto | Broker Associate | 303.472.2222 | keith@kanemoto.com

RE/MAX TRADITIONS COMMERCIAL DIVISION  
EACH OFFICE INDEPENDENTLY OWNED AND OPERATED  
2204 18TH AVENUE, LONGMONT, CO 80501 • 303.772.2222 (O) • KANEMOTO.COM

All information provided is deemed reliable but is not guaranteed and should be independently verified.

346 - 2,129 SF | 2030 TERRY STREET | LONGMONT, CO

# Property Summary



## OFFERING SUMMARY

Lease Rate:	\$663 - \$3,726 per month
Building Size:	8,364 square feet
Approximate Lot Size:	0.43 Acres
Year Built:	1998
Zoning:	Commercial (Proposed change to Mixed-Use Corridor (MU-C))

## PROPERTY OVERVIEW

Very desirable office suites available in North Longmont ranging from 346 square feet to 2,129 square feet. Great location with easy access and excellent parking for clientele. Offices available on both the main and lower levels. Close to restaurants, shopping, banking and more...All leases are gross leases and include all utilities. Use of a kitchenette and conference room is included in the monthly rent and available to all tenants. Additionally, there is a large meeting room with a kitchen, and various sizes of storage space are available for lease to tenants.



**KEITH KANEMOTO**  
 Office: 303.772.2222  
 Cell: 303.472.2222  
 keith@kanemoto.com  
 kanemoto.com

All information provided is deemed reliable but is not guaranteed and should be independently verified.

346 - 2,129 SF | 2030 TERRY STREET | LONGMONT, CO

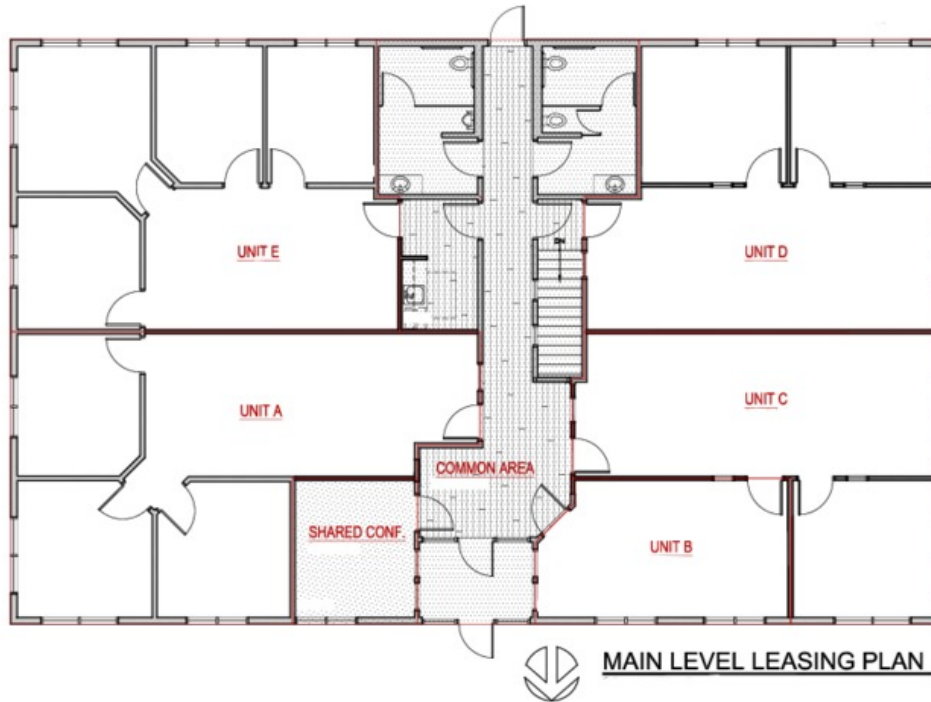
# Available Spaces

LEASE TYPE | Gross

TOTAL SPACE | 346 - 2,129 SF

LEASE TERM | Negotiable

TOTAL LEASE AMOUNT | \$663 - \$3,726 per month



SUITE	TENANT	SIZE (SF)	LEASE TYPE	TOTAL LEASE AMOUNT	
Suite A	Available	1,055 SF	Gross	\$1,845 per month	-
Suite B	Available	346 SF	Gross	\$663 per month	-
Suite C	Available	737 SF	Gross	\$1,289 per month	-
Suite D	Available	937 SF	Gross	\$1,639 per month	-
Suite E	Available	1,075 SF	Gross	\$1,881 per month	-
Suite B-F	Available	615 SF	Gross	\$615 per month	-
Suites A & E	Available	2,129 SF	Gross	\$3,726 per month	-
Suite B & C	Available	1,082 SF	Gross	\$1,894 per month	-
Suites C & D	Available	1,673 SF	Gross	\$2,928 per month	-
Suite B, C & D	Available	2,020 SF	Gross	\$3,533 per month	-