

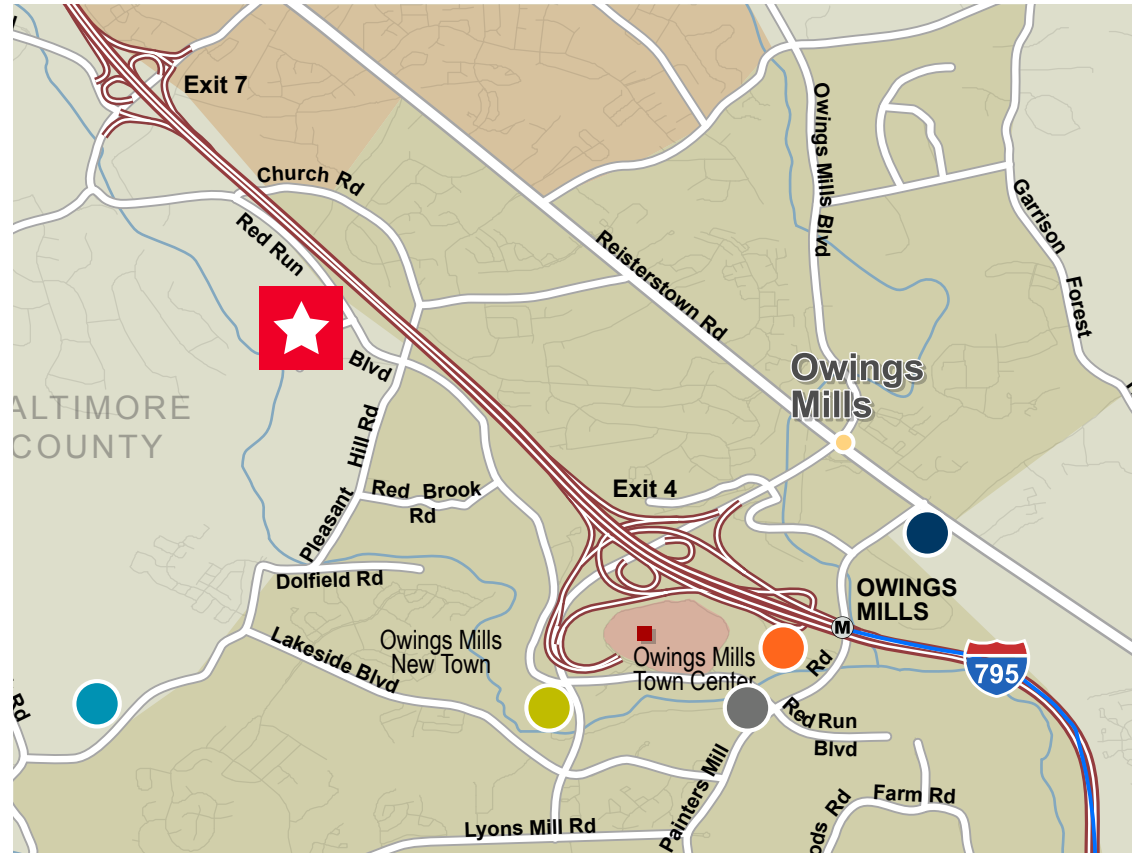







RED RUN CORPORATE CENTER

11155 Red Run Boulevard
Owings Mills, MD 21117

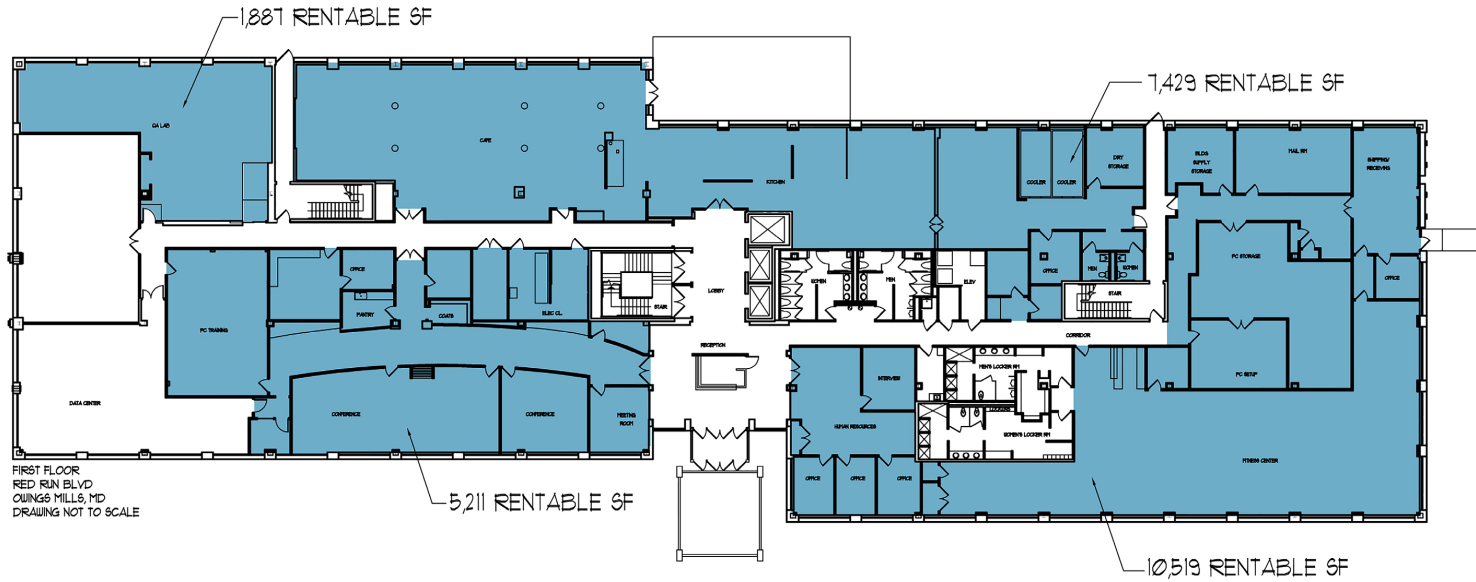
PROPERTY HIGHLIGHTS

- A four (4) story, Class “A” corporate headquarters quality building with easy access to I-795.
- 120,327 SF / 30,000 SF floorplates
- Upgraded lobby finishes include granite flooring, wood maple paneling and custom lighting
- Fitness Center and Café on site
- The building has digital energy management system with computer-controlled heat and air conditioning for maximum flexibility and tenant comfort.
- Fiber optic and copper wire data/telephone service available
- Restaurants, shops and hotels all located within a short distance

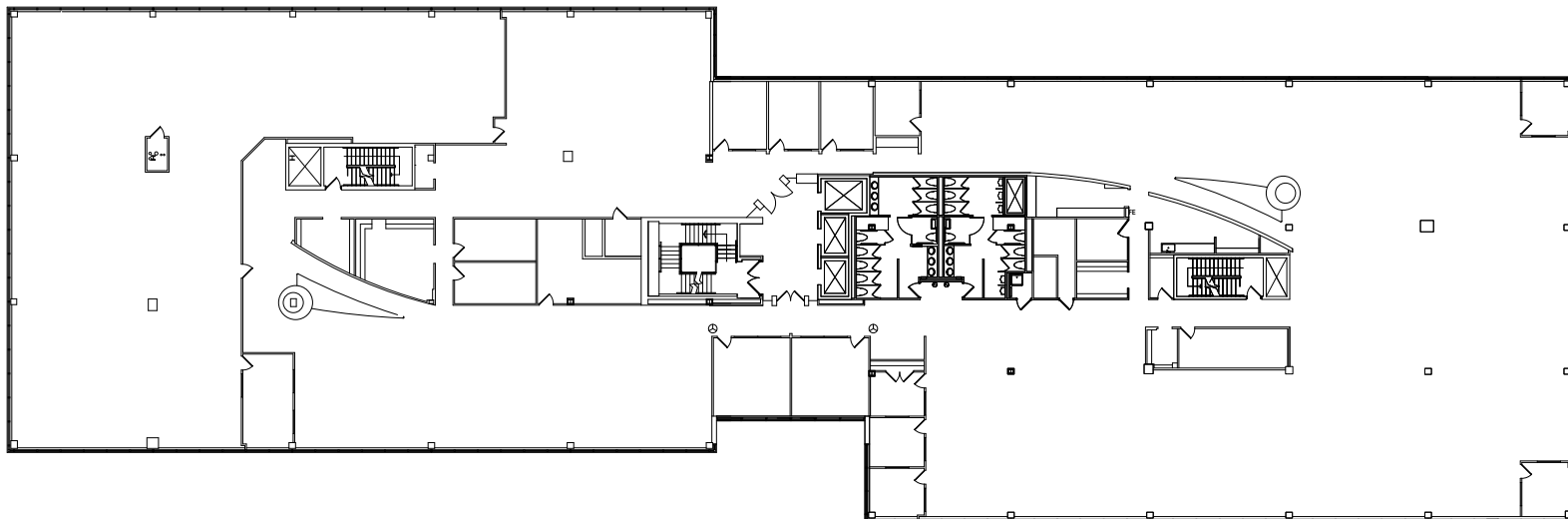


- | | |
|---|---|
|  Wegman's / The Foundry |  Hilton Garden Inn |
|  The Metro @ Owings Mills |  Hyatt Place |
|  Ravens Performance Center | |

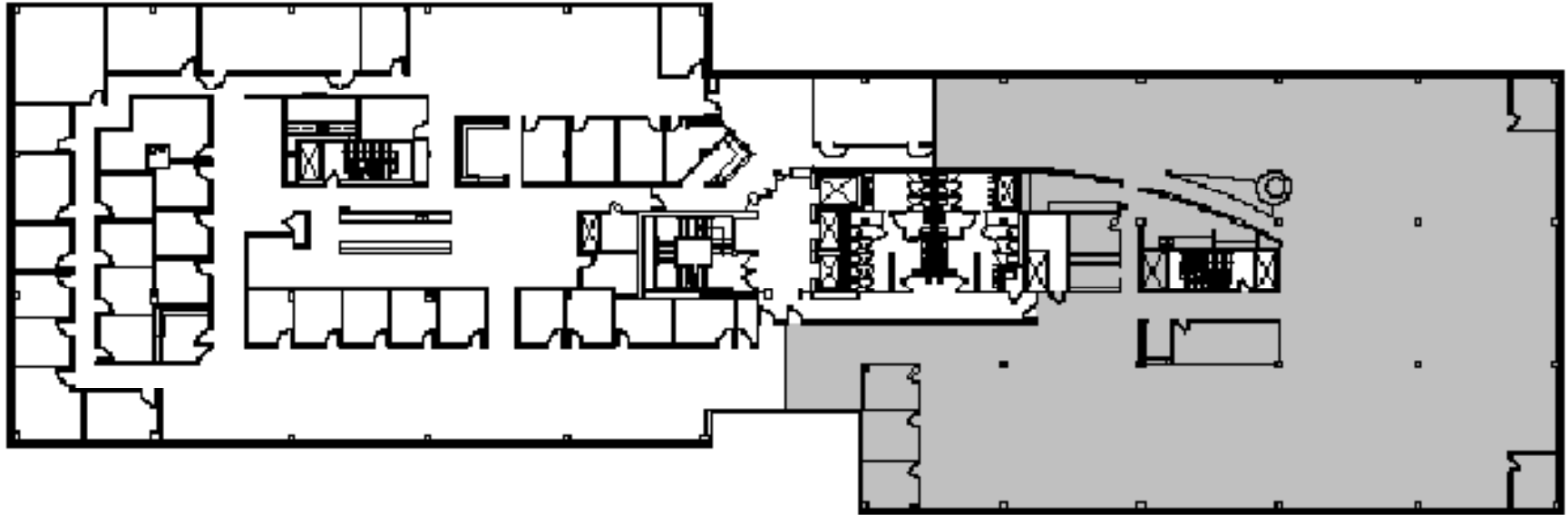
First Floor



Third Floor



Fourth Floor



Site Plan



Lizzy B. Sweeney
Senior Vice President
+1 410 347 1149
lizzy.sweeney@cushwake.com

One East Pratt Street, Suite 700
Baltimore, MD 21202
direct +1 410 752 4285
fax +1 410 576 9031
cushmanwakefield.com