

BLDG 341
Reese Technology Center
Lubbock, Texas 79416

Premises:

6,953 SF

Rental Rate: \$8/SF/MG

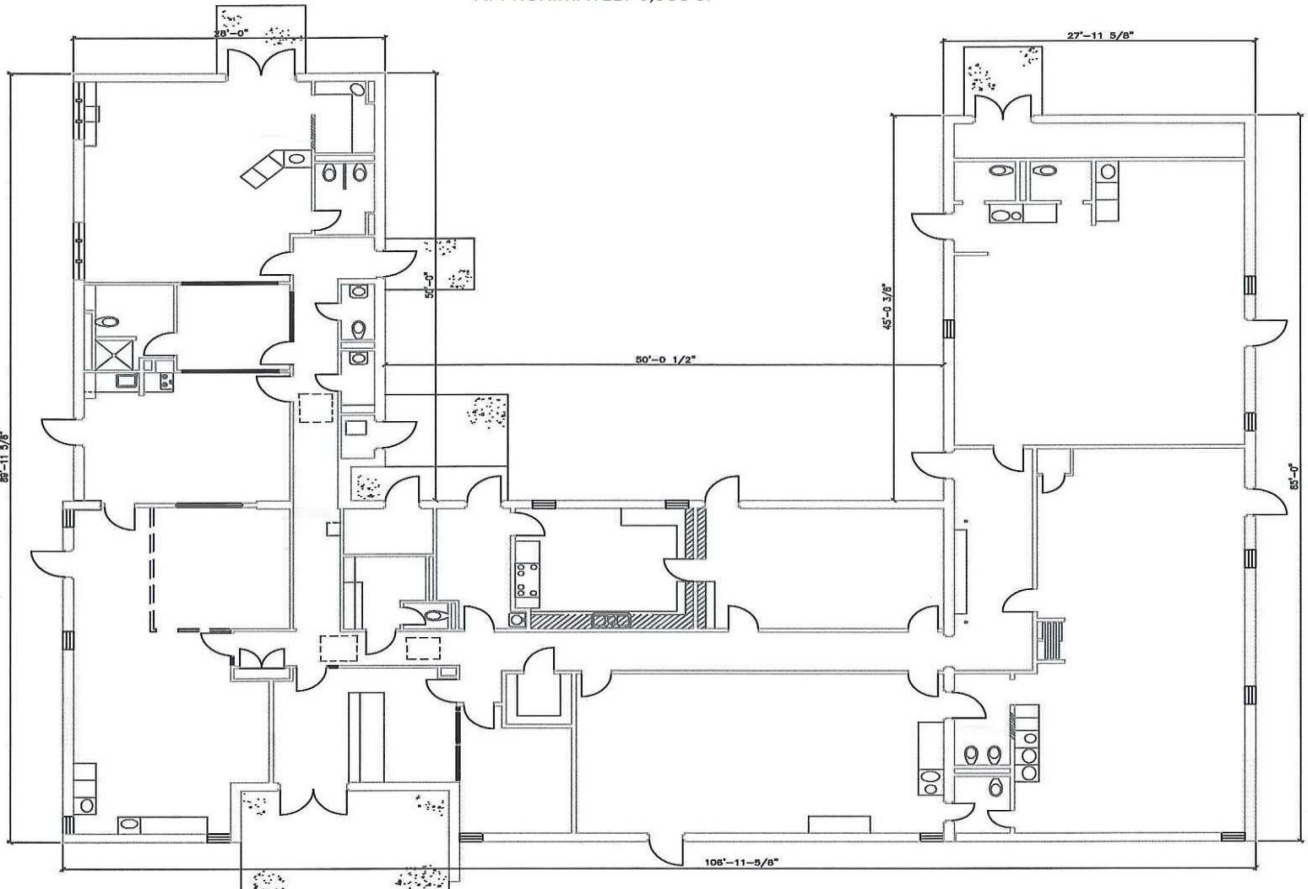
Availability: Now

Features:

- Former Daycare
- Flexible Floor Plan
- Ample Parking
- Court Yard



BUILDING #341
APPROXIMATELY 6,953 SF



Area Amenities

| | |
|-----------------------------|--|
| BUILDING: | 341 |
| ADDRESS: | 9719 10 th Drive Lubbock, TX 79416 |
| LEASE RATE: | \$8 PSF per Year "AS IS" |
| LEASE TYPE: | Modified Gross |
| SECURITY DEPOSIT: | Equal to First Month's Rent |
| BUILDING TYPE: | Brick |
| ZONING: | Commercial |
| ACREAGE: | 0.05+/- |
| NEAREST INTERSTATE: | Interstate 27 |
| DISTANCE: | 10 Miles |
| NEAREST HIGHWAY: | State Highway 114 |
| DISTANCE: | 1 Mile - Direct entrance to airfield |
| NEAREST RAIL: | Permian Basin Railway |
| DISTANCE: | 1 Mile |
| CEILING HEIGHT: | 8' |
| PARKING SPACES: | Ample |
| SQUARE FOOTAGE (APPROX): | 6,953 |
| YEAR BUILT: | 1963 |
| STORIES: | 1 |
| BUILDING DIMENSIONS: | 60'x75' |
| CONSTRUCTION TYPE: | Concrete block, Steel frame roof |
| ROOF TYPE: | Tar & Gravel |
| EXTERIOR TYPE: | Brick |
| HVAC: | 15 ton |
| SPRINKLER SYSTEM: | - |
| FIBER: | Wireless Connection/ Fiber Nearby |
| ELECTRIC: | South Plains Electric Cooperative |
| POWER CAPACITY: | 208 Volt 3 Phase |
| BACKUP GENERATOR: | - |
| GAS: | Atmos Energy |
| WATER: | City of Lubbock |
| WATER LINE: | 2" Line |
| SEWER: | City of Lubbock |
| SEWER LINE: | 4" Line |

