

FOR LEASE

ARDEN MEDICAL PLAZA

435

ARDEN AVENUE

GLENDALE, CALIFORNIA



Free and convenient patient parking, and secured physician parking



Easily accessible location, in close proximity to the 134 and 5 freeways



Pharmacy and lab on site



Interior building renovations underway

For more information contact:

GREG K. BARSAMIAN

Senior Executive Vice President

☎ 818.334.1901

CalBRE Broker Lic.# 00873206

Greg.Barsamian@colliers.com

ALEXA BARSAMIAN

Associate

☎ 818.334.1891

CalBRE Lic.# 02047802

Alexa.Barsamian@colliers.com

COLLIERS INTERNATIONAL

701 N. Brand Blvd., Suite #800

Glendale, CA 91203-3279

☎ 818.334.1900 | 📠 818.334.1876

www.colliers.com



Lic# 01929798



ARDEN MEDICAL PLAZA

435

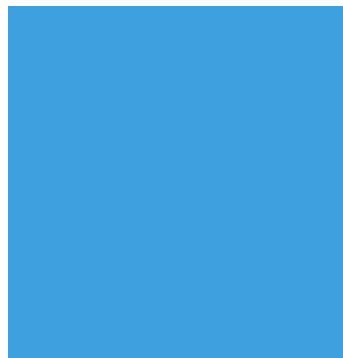
ARDEN AVENUE

GLENDALE, CALIFORNIA

TABLE OF CONTENTS

01

PROPERTY HIGHLIGHTS



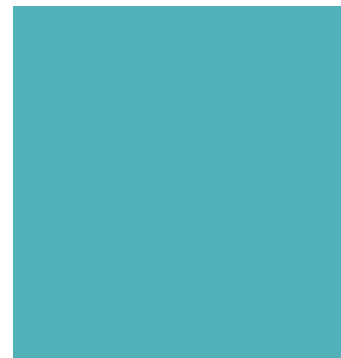
02

PHOTOS, AERIALS & MAPS



03

FLOOR & SITE PLANS



04

NEARBY AMENITIES &
CORPORATE NEIGHBORS





BUILDING DESCRIPTION

Address:	435 Arden Avenue Glendale, CA 91203	
No. Stories:	Five (5) Floors	
Asking Rate:	\$3.20 PSF Full Service Gross	
RSF:	Suite 340	±1,504 RSF
	Suite 370	±1,639 RSF
	Suite 410/420	±4,845 RSF
	Suite 520	±3,731 RSF (Divisible)
Building Size:	±41,771 SF	
Parking:	5/1,000 Ratio FREE	
Year Built:	1986	
Available:	Immediately	

PROPERTY HIGHLIGHTS

- › Built out Medical office spaces.
- › Pharmacy and laboratory on-site.
- › Easy access to 134 & 5 Freeways.
- › Within walking distance to shops and restaurants.
- › Abundant parking - Ratio of 5/1,000. **FREE patient parking, FREE and secured physician parking.**

01

PROPERTY HIGHLIGHTS

435
ARDEN AVENUE

For more information contact:

GREG K. BARSAMIAN
Senior Executive Vice President
☎ 818.334.1901
CalBRE Broker Lic.# 00873206
Greg.Barsamian@colliers.com

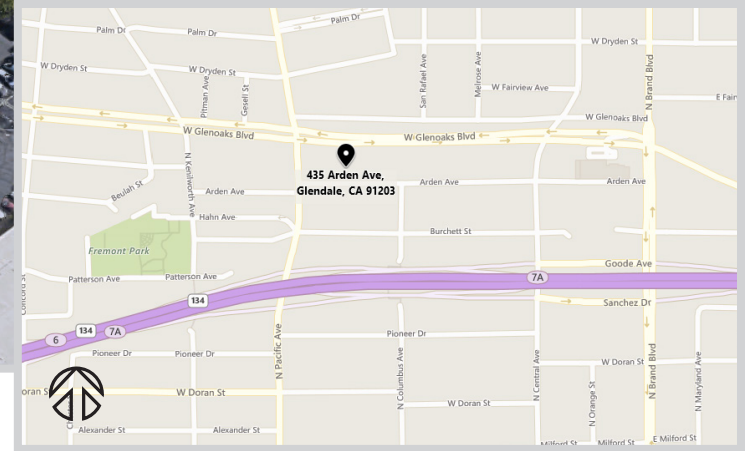
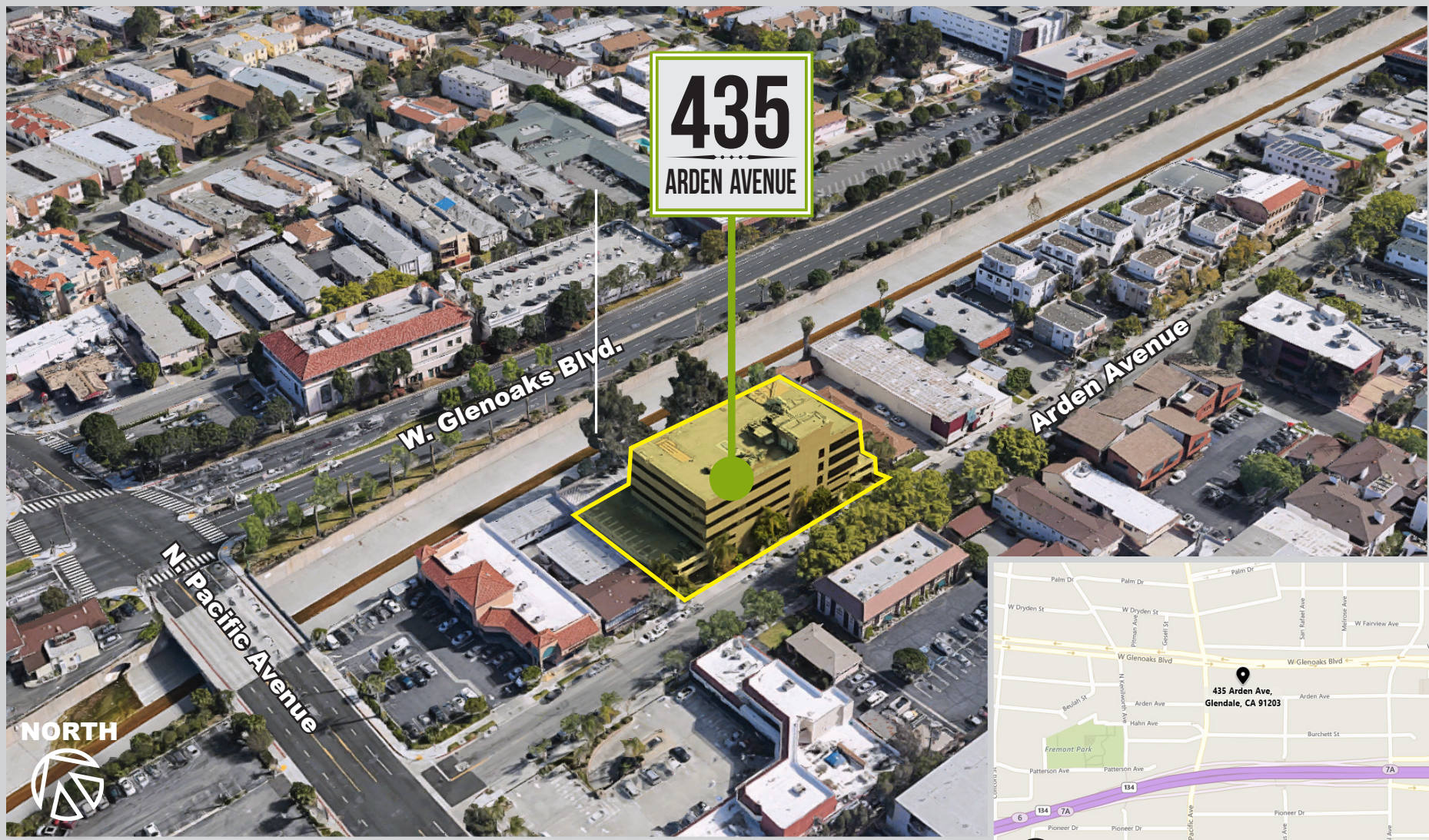
ALEXA BARSAMIAN
Associate
☎ 818.334.1891
CalBRE Lic.# 02047802
Alexa.Barsamian@colliers.com

COLLIERS INTERNATIONAL
701 N. Brand Blvd., Suite #800
Glendale, CA 91203-3279
☎ 818.334.1900 | 📠 818.334.1876
www.colliers.com



Lic# 01929798

Page 3



435 ARDEN AVENUE

For more information contact:

GREG K. BARSAMIAN
Senior Executive Vice President
☎ 818.334.1901
CalBRE Broker Lic.# 00873206
Greg.Barsamian@colliers.com

ALEXA BARSAMIAN
Associate
☎ 818.334.1891
CalBRE Lic.# 02047802
Alexa.Barsamian@colliers.com

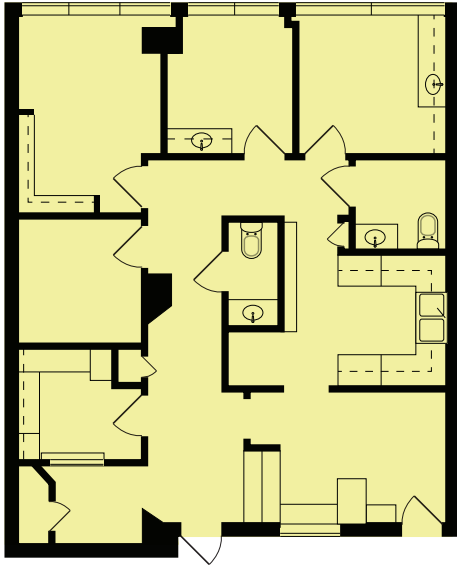
COLLIERS INTERNATIONAL
701 N. Brand Blvd., Suite #800
Glendale, CA 91203-3279
☎ 818.334.1900 | 📠 818.334.1876
www.colliers.com



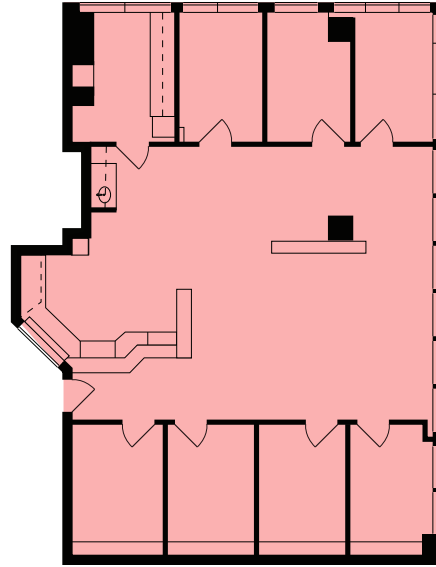
Lic# 01929798

FLOOR PLANS

Suite 340



Suite 370



Suite 520



- UNIT 340 = ±1,504 RSF
- UNIT 370 = ±1,639 RSF
- UNIT 520 = ±3,731 RSF (Divisible)

435
ARDEN AVENUE

For more information contact:

GREG K. BARSAMIAN
Senior Executive Vice President
☎ 818.334.1901
CalBRE Broker Lic.# 00873206
Greg.Barsamian@colliers.com

ALEXA BARSAMIAN
Associate
☎ 818.334.1891
CalBRE Lic.# 02047802
Alexa.Barsamian@colliers.com

COLLIERS INTERNATIONAL
701 N. Brand Blvd., Suite #800
Glendale, CA 91203-3279
☎ 818.334.1900 | ☎ 818.334.1876
www.colliers.com



Lic# 01929798



435
ARDEN AVENUE

For more information contact:

GREG K. BARSAMIAN
Senior Executive Vice President
☎ 818.334.1901
CalBRE Broker Lic.# 00873206
Greg.Barsamian@colliers.com

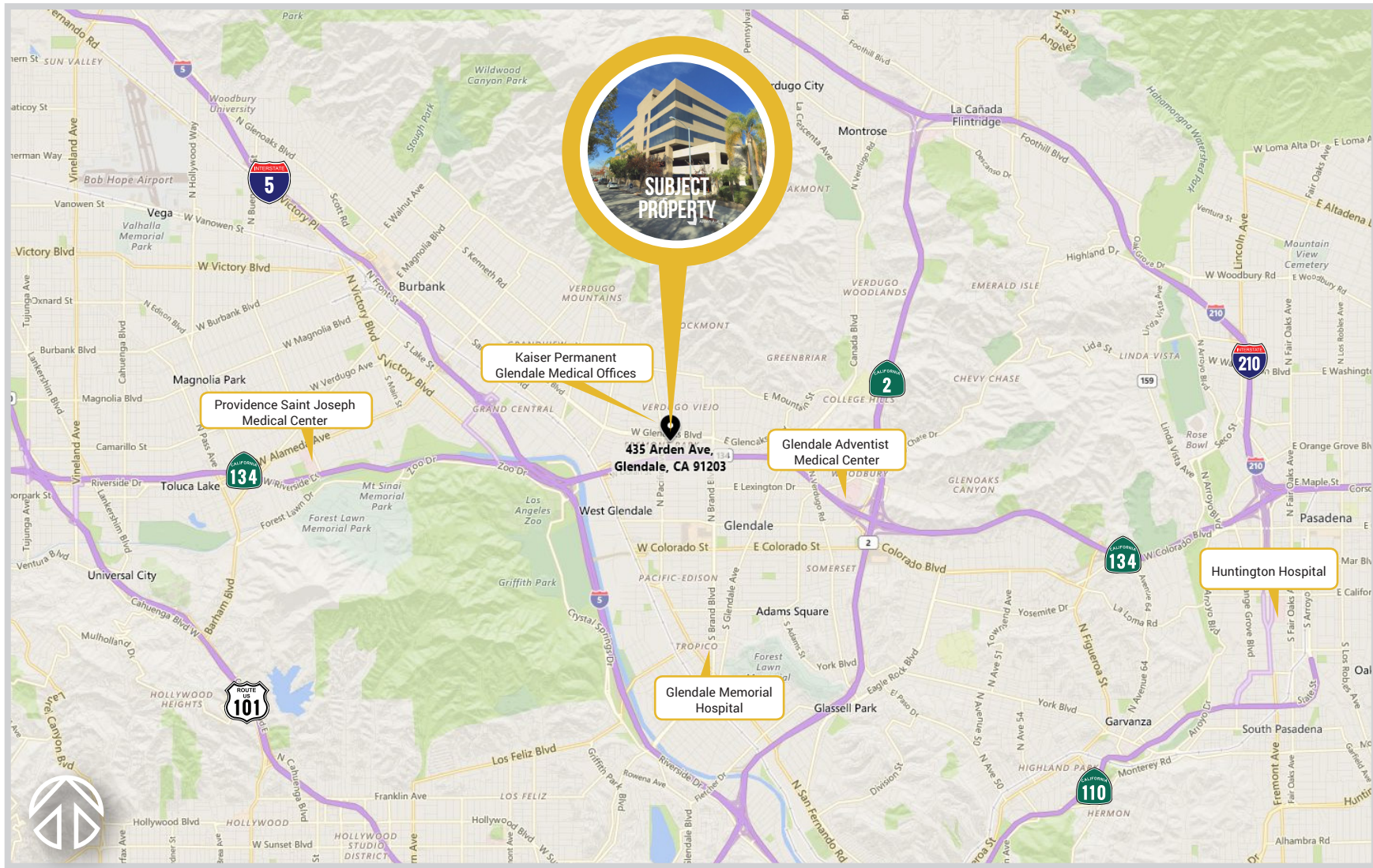
ALEXA BARSAMIAN
Associate
☎ 818.334.1891
CalBRE Lic.# 02047802
Alexa.Barsamian@colliers.com

COLLIERS INTERNATIONAL
701 N. Brand Blvd., Suite #800
Glendale, CA 91203-3279
☎ 818.334.1900 | 📠 818.334.1876
www.colliers.com



Lic# 01929798

NEARBY MEDICAL CENTERS



435
ARDEN AVENUE

For more information contact:

GREG K. BARSAMIAN
Senior Executive Vice President
818.334.1901
CalBRE Broker Lic.# 00873206
Greg.Barsamian@colliers.com

ALEXA BARSAMIAN
Associate
818.334.1891
CalBRE Lic.# 02047802
Alexa.Barsamian@colliers.com

COLLIERS INTERNATIONAL
701 N. Brand Blvd., Suite #800
Glendale, CA 91203-3279
818.334.1900 | 818.334.1876
www.colliers.com



Lic# 01929798