



150 PROFESSIONAL COURT, STE. A, LAFAYETTE

OFFICE/MEDICAL/DENTAL

Ste. A- 2,650 square feet

- \$12.00 per square foot NNN (\$3.00 est.)
- Zoned GB

FEAUTURES

- Reception/kids area
- Several offices/treatment rooms
- Staff/kitchenette & Staff restroom
- Storage room
- Plenty of parking

Located just off SR 38, across from the Mall. Formerly Dr. Ellsworth's dental office .

Kevin Bol, Broker
(765) 490-7890 cell
kevin@kbolgroup.com

Kevin Bol Commercial Group, LLC
903 Columbia St, Lafayette, IN 47901
(765) 637-2626 office
www.kbolgroup.com

MASS CABINERY
ADAPT ADEC HVE ARM ASSY.

AN CHAIR
P.O.P.T.C
F'S STOOL
HANDPIECE
ION LIGHT
F'S STOOL
T'S STOOL
CABINERY
ASSEMBLY
R SYSTEM
GABINET)
MISTERY
20, ONLY
VIEW BOX
N OUTLET

300 CHAIR
HVS UNIT
F'S STOOL
HANDPIECE
LIGHT, P
Y'S STOOL
CABINERY
ASSEMBLY
R SYSTEM
GABINET)
VIEW BOX
F/O HPEZ
N OUTLET

11 X-RAY
A CABINET

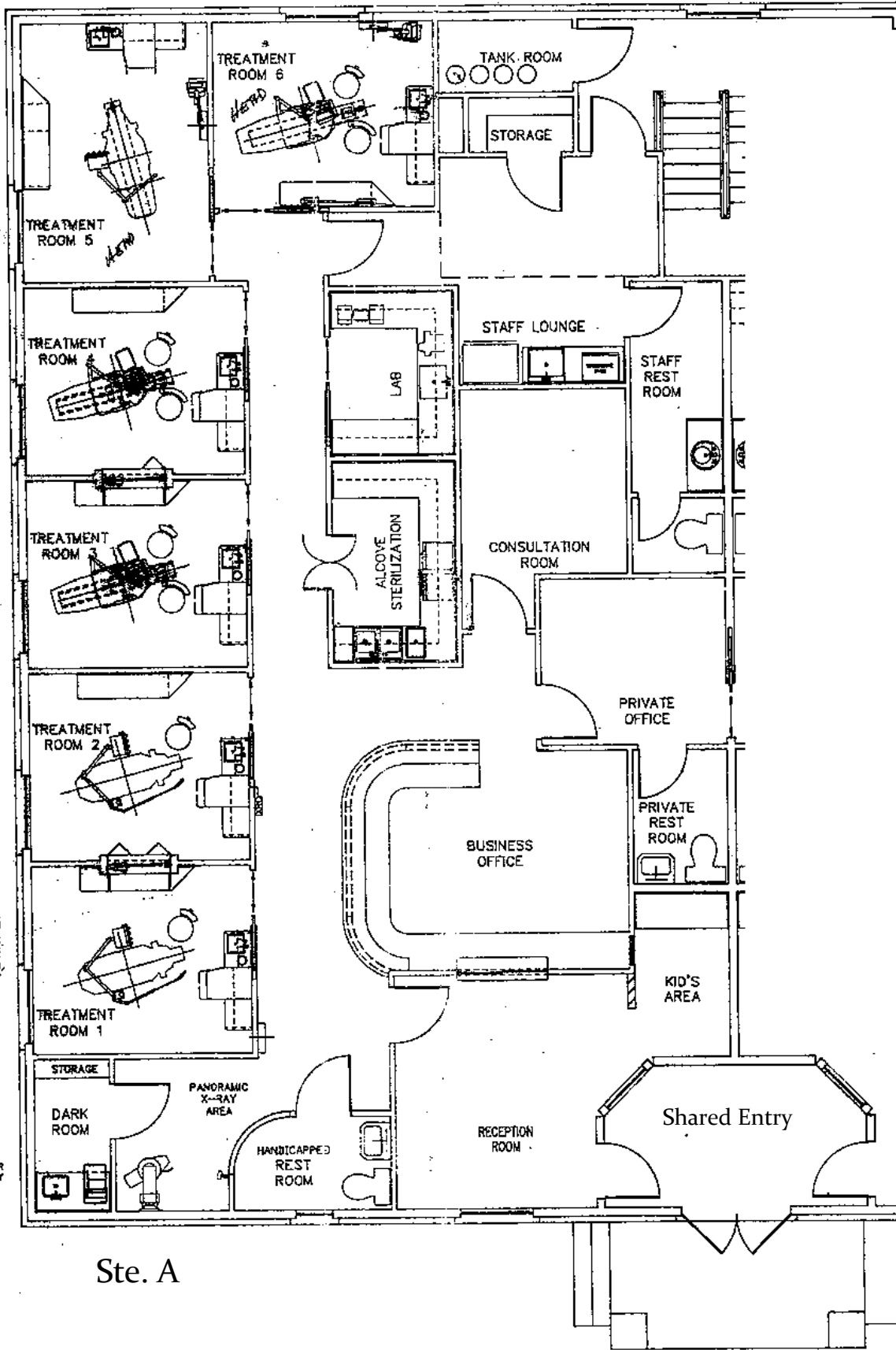
000 CHAIR
HVS UNIT
F'S STOOL
HANDPIECE
LIGHT, P
T'S STOOL
CABINERY
ASSEMBLY
R SYSTEM
GABINET)
VIEW BOX
F/O HPEZ
N OUTLET

400 CHAIR
F'S STOOL
HANDPIECE
I W/ POST
FROM 3000
CABINERY
IN WATER
IN SYSTEM
GABINET)
VIEW BOX
ON OUTLET

170 X-RAY
OR ABOVE
IN CABINET

MAN CHAIR
130'S ARM
JY'S STOOL
HANDPIECE
I W/ POST
FROM 3000
CABINERY
R SYSTEM
GABINET)
VIEW BOX

PROCESSOR
MIC X-RAY



Ste. A

Information is believed to be accurate but not guaranteed.

