

## 5353 WAYZATA OFFICE CENTER 5353 WAYZATA BOULEVARD, ST. LOUIS PARK, MN 55416



### OFFERING SUMMARY

Available SF:	1,029 - 5,241 SF
Lease Rate:	\$16.00 SF/yr (NNN)
2019 Tax & CAM:	\$13.21 SF
Year Built:	1979
Building Size:	112,304 SF

### PROPERTY OVERVIEW

- Southwest quadrant of Highways 100/I-394 and adjacent to The Shops at West End
- Sheltered Bus Stop On-Site
- Park N' Ride
- Convenient lodging for your out of town clients and consultants; Hilton Homewood Suites next door
- Associated Bank is anchor tenant

AREA AMENITIES include over twelve restaurants within walking distance including CRAVE; Lucky Cricket; The Loop; Raku Sushi & Lounge; Rojo Mexican Grill; Yard house; Punch Bowl Social; and more

Five Hotels: SpringHill Suites, DoubleTree; TownHill Suites, AC Hotel by Marriott and Hilton Homewood

Cub Foods/Liquor adjacent to property

Showplace Icon Theatres

Anthropologie; Costco; Creative Kidstuff; Evereve; J.W. Hulme; francesca's and more...

### PROPERTY HIGHLIGHTS

- Suite 210 - 1,029 SF (available on 30 day notice)
- Suite 250 - 2,150 SF
- Suite 306 - 2,237 SF (Available 7/1/19)
- Suite 400 - 5,241 SF (available 4/1/19)

### BARRY BIRNBERG

952.820.1673  
barry.birnberg@northcocommercial.com

The information above has been obtained from services we believe to be reliable, however, we accept no responsibility for its correctness.

5353 WAYZATA OFFICE CENTER  
5353 WAYZATA BOULEVARD, ST. LOUIS PARK, MN 55416



**BARRY BIRNBERG**

952.820.1673

[barry.birnberg@northcocommercial.com](mailto:barry.birnberg@northcocommercial.com)

The information above has been obtained from services we believe to be reliable, however, we accept no responsibility for its correctness.

**5353 WAYZATA OFFICE CENTER**  
5353 WAYZATA BOULEVARD, ST. LOUIS PARK, MN 55416



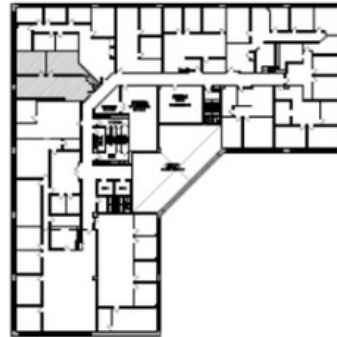
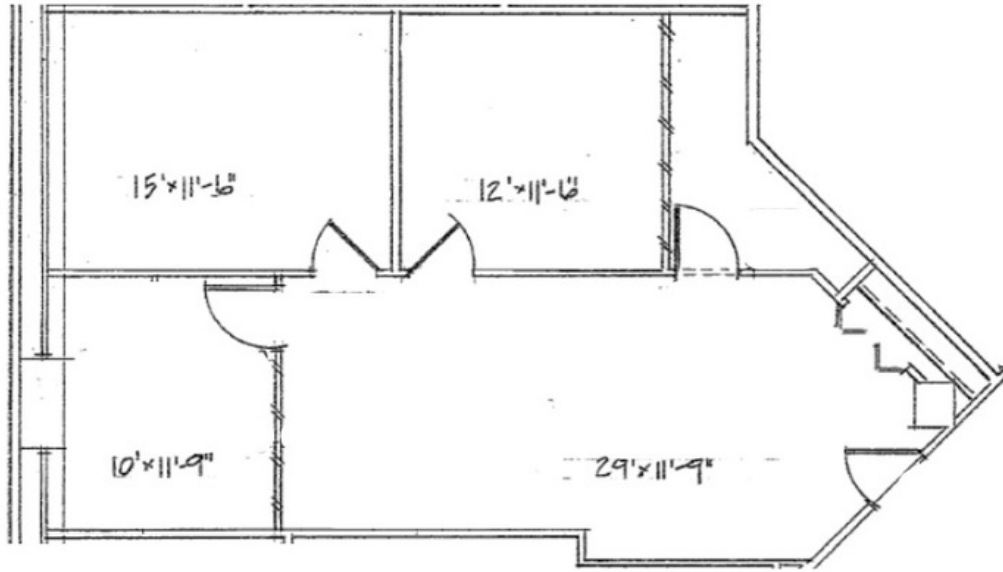
**BARRY BIRNBERG**

952.820.1673

barry.birnberg@northcocommercial.com

The information above has been obtained from services we believe to be reliable, however, we accept no responsibility for its correctness.

5353 WAYZATA OFFICE CENTER  
5353 WAYZATA BOULEVARD, ST. LOUIS PARK, MN 55416



Suite 210  
1,029 SF

(NOT TO SCALE)

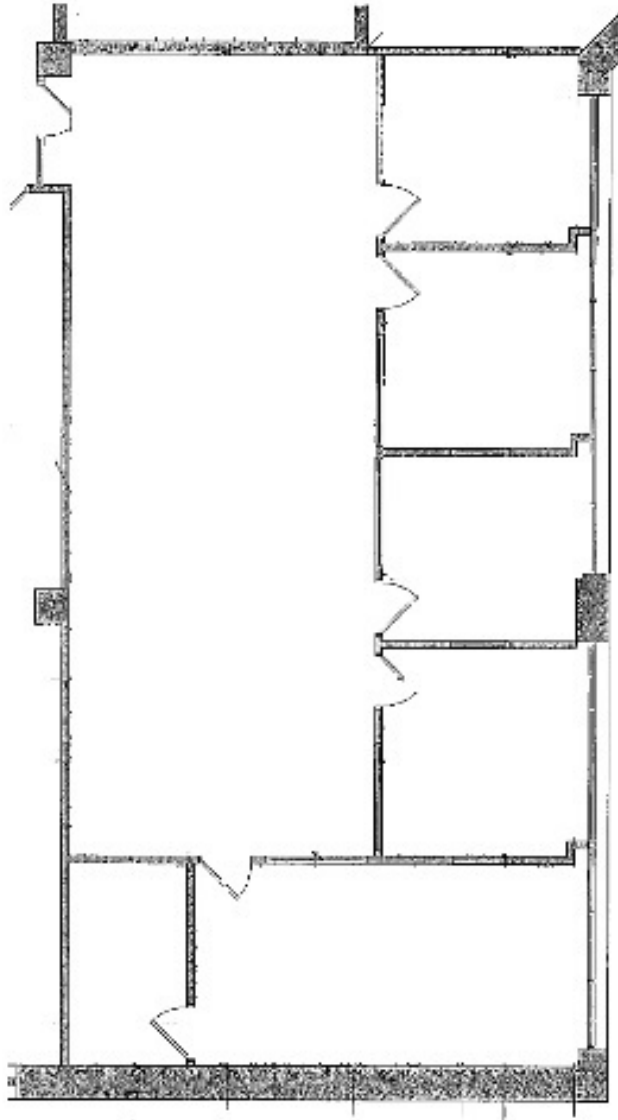
**BARRY BIRNBERG**

952.820.1673

barry.birnberg@northcocommercial.com

The information above has been obtained from services we believe to be reliable, however, we accept no responsibility for its correctness.

5353 WAYZATA OFFICE CENTER  
5353 WAYZATA BOULEVARD, ST. LOUIS PARK, MN 55416



Suite 250  
2,150 SF



(NOT TO SCALE)

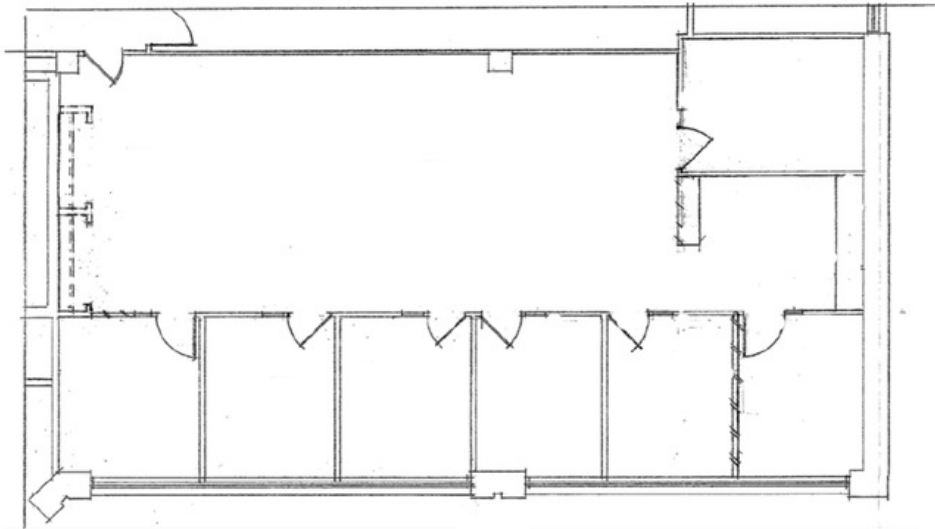
**BARRY BIRNBERG**

952.820.1673

barry.birnberg@northcocommercial.com

The information above has been obtained from services we believe to be reliable, however, we accept no responsibility for its correctness.

5353 WAYZATA OFFICE CENTER  
5353 WAYZATA BOULEVARD, ST. LOUIS PARK, MN 55416



SUITE #306  
2,237 R.S.F.



KEY PLAN  
LEVEL THREE

**BARRY BIRNBERG**

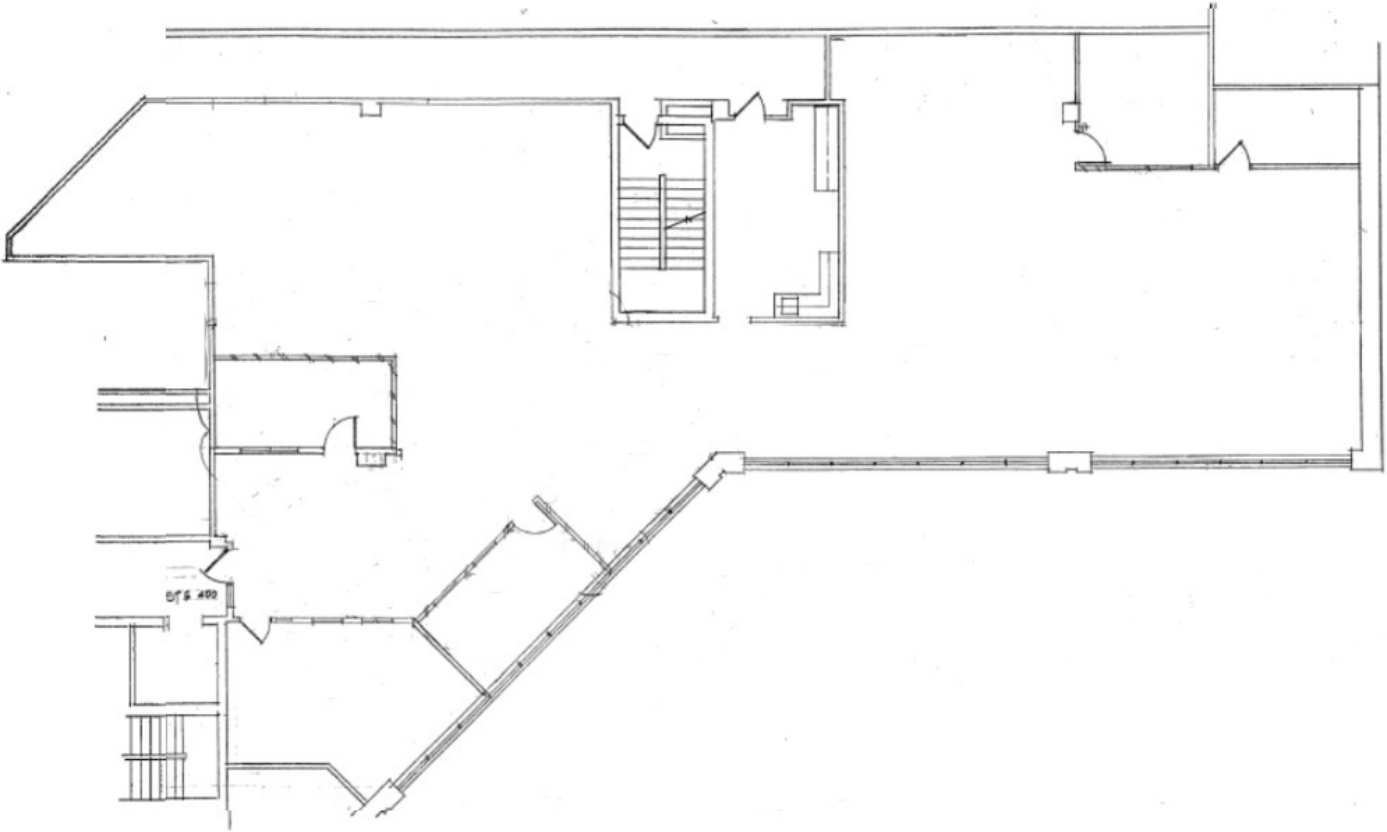
952.820.1673

barry.birnberg@northcocommercial.com

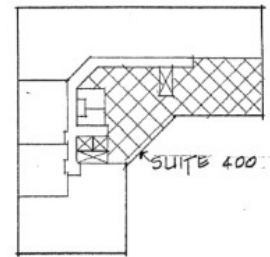
**SUITE 306 - 2.237 SF**

The information above has been obtained from services we believe to be reliable, however, we accept no responsibility for its correctness.

5353 WAYZATA OFFICE CENTER  
5353 WAYZATA BOULEVARD, ST. LOUIS PARK, MN 55416



Suite 400  
5,241 SF



(NOT TO SCALE)

**BARRY BIRNBERG**

952.820.1673

barry.birnberg@northcocommercial.com

**SUITE 400 - 5,241 SF**

The information above has been obtained from services we believe to be reliable, however, we accept no responsibility for its correctness.