

10400

EATON PLACE
FAIRFAX, VIRGINIA

1,303-13,640 RSF AVAILABLE NOW!



BUILDING AMENITIES

- Spec Suites ready for immediate occupancy!
- Brand new tenant-only fitness center
- Brand new WiFi lounge and self-service vending with healthy snacks, lunches and beverages
- Free surface parking
- Onsite engineer and responsive management company
- Competitive rental rates
- Significant building renovations
- Storage available to tenants

LOCATION AMENITIES

- Immediate access to I-66 and 123 (Chain Bridge Road)
- Convenient to Fairfax City Courthouse and Fairfax Government Center
- Walking distance to Fairfax Shopping Center - breaking ground end-of-year 2018 / completion 2019-2020
-- See architectural renderings on page 2
- Next door to Best Western hotel



CONTACT INFORMATION

Larry FitzGerald
lfitzgerald@ngkf.com
703-918-0221

Cole Spalding
cspalding@ngkf.com
703-918-0230

1410 Spring Hill Road, Suite 600, McLean, VA 22102

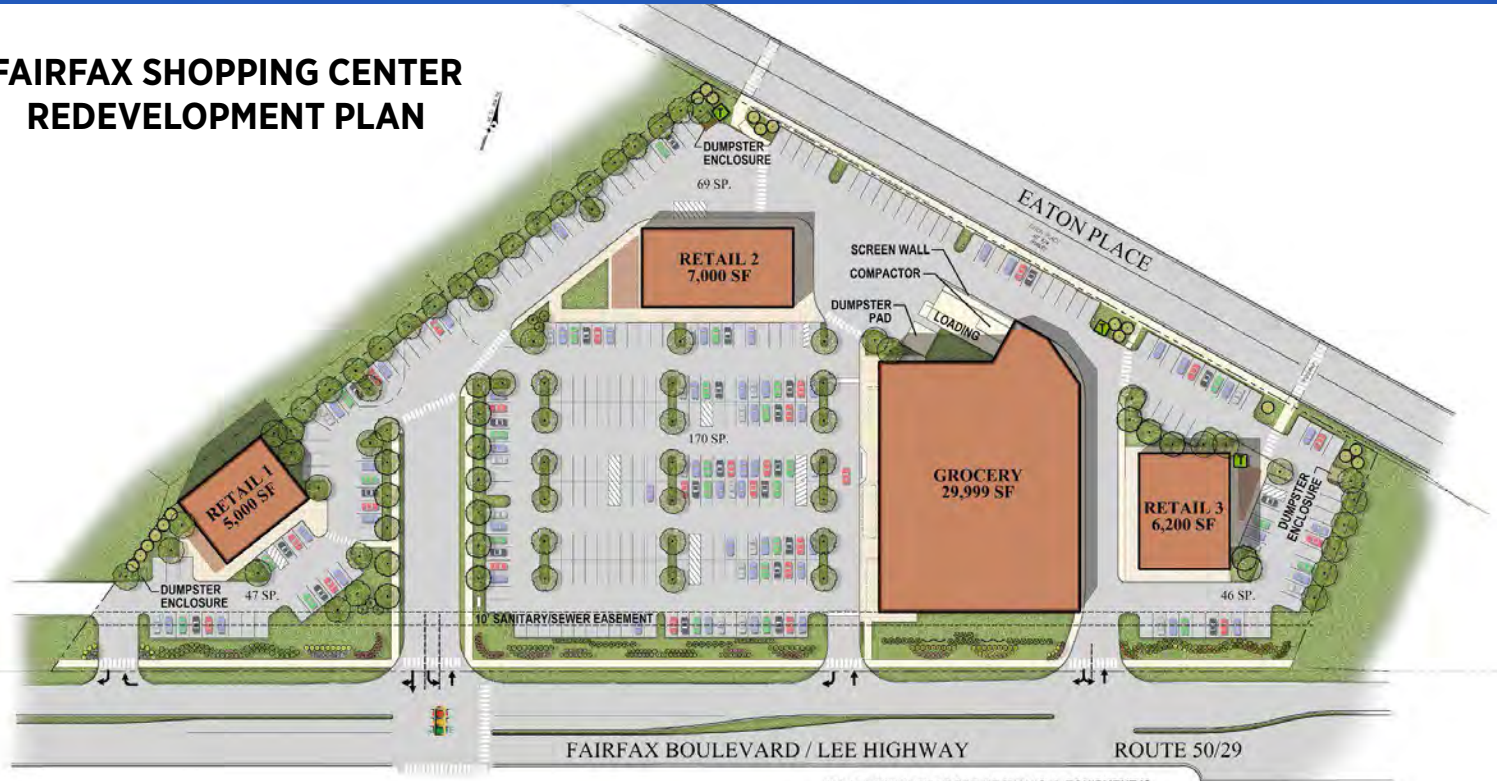


10400

EATON PLACE

FAIRFAX, VIRGINIA

FAIRFAX SHOPPING CENTER REDEVELOPMENT PLAN



NOTE: EXCEPT AS NOTED MECHANICAL EQUIPMENT IS TO BE LOCATED ON THE BUILDING ROOF AND OBSCURED BY THE BUILDING PARAPET.



**ARCHITECTURAL
RENDERING**



CONTACT INFORMATION

Larry FitzGerald
lfitzgerald@ngkf.com
703-918-0221

Cole Spalding
cspalding@ngkf.com
703-918-0230

1410 Spring Hill Road, Suite 600, McLean, VA 22102



**POLINGER
COMPANY**
EST. 1947

10400

EATON PLACE

FAIRFAX, VIRGINIA



CONTACT INFORMATION
Larry FitzGerald
lfitzgerald@ngkf.com
703-918-0221
1410 Spring Hill Road, Suite 600, McLean, VA 22102

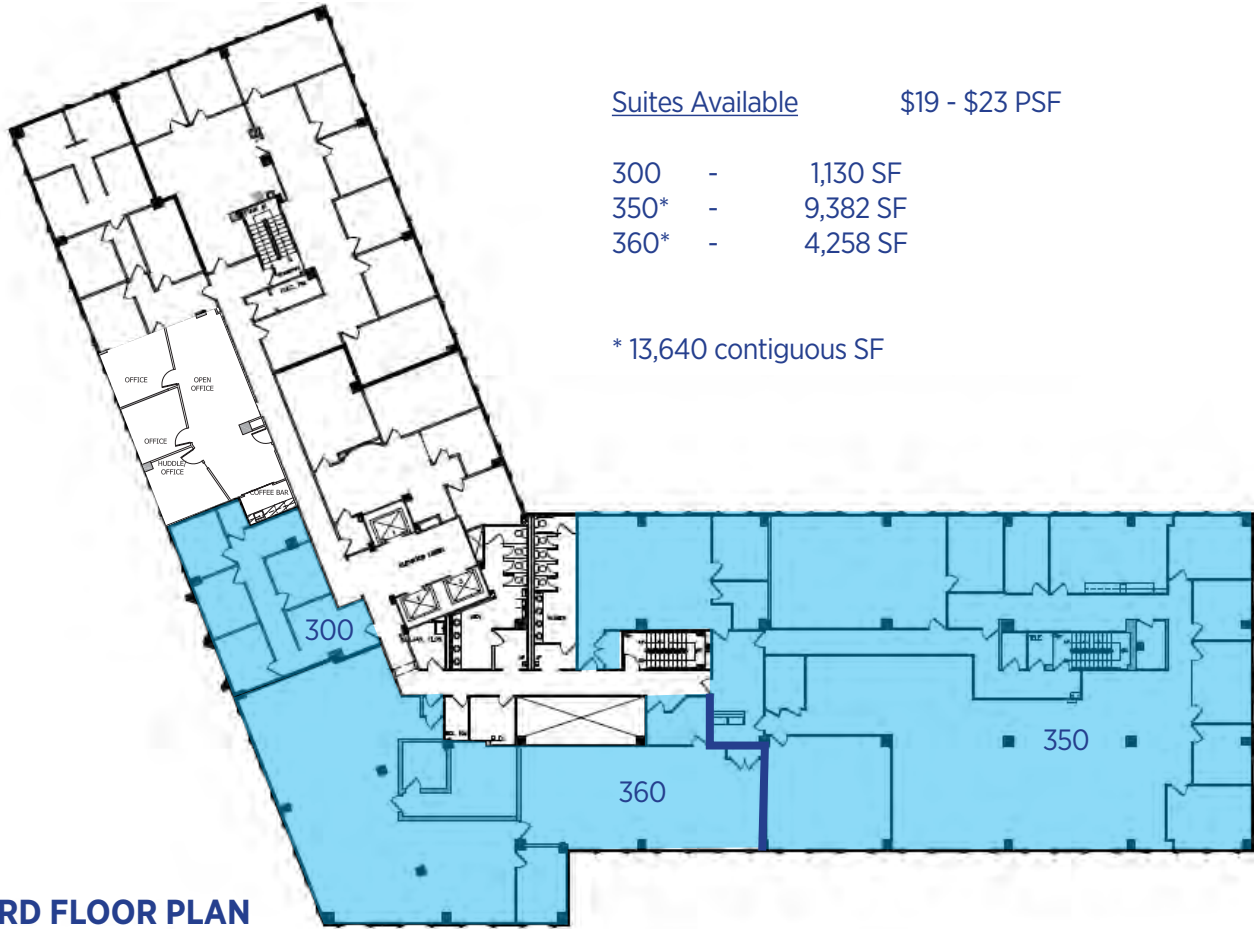
Cole Spalding
cspalding@ngkf.com
703-918-0230



10400

EATON PLACE

FAIRFAX, VIRGINIA



3RD FLOOR PLAN



CONTACT INFORMATION

Larry FitzGerald
lfitzgerald@ngkf.com
703-918-0221
1410 Spring Hill Road, Suite 600, McLean, VA 22102

Cole Spalding
cspalding@ngkf.com
703-918-0230



10400

EATON PLACE

FAIRFAX, VIRGINIA



Suite Available \$19 - \$23.50 PSF

520 - 1,500 - 5,740 SF

5TH FLOOR PLAN



CONTACT INFORMATION

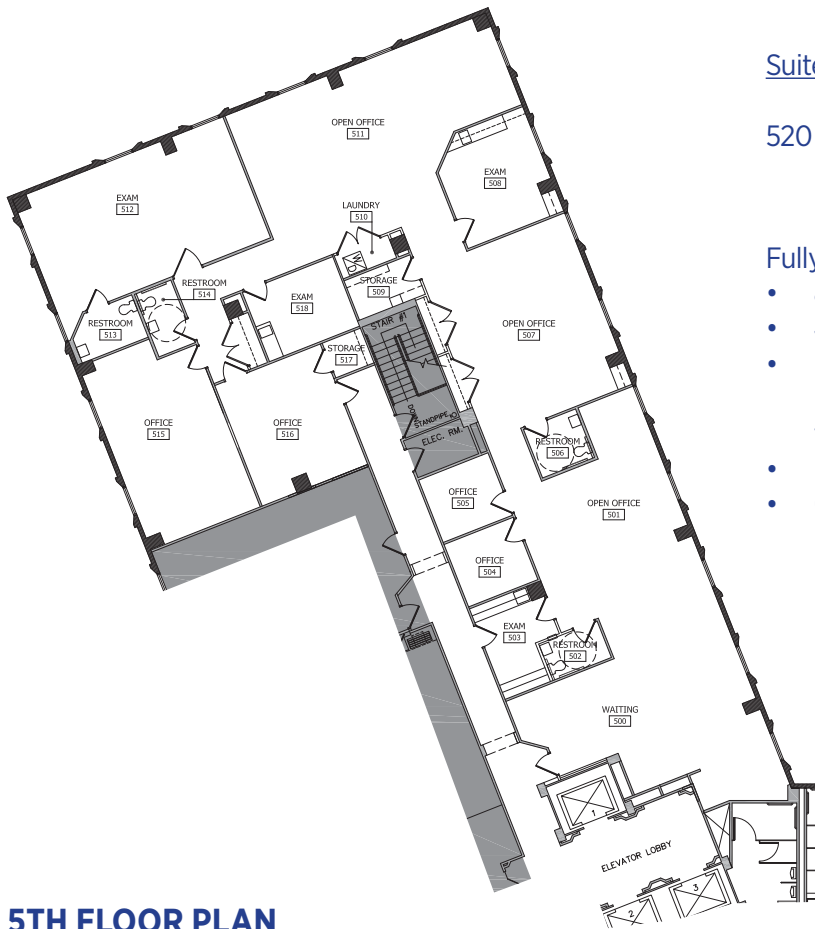
Larry FitzGerald Cole Spalding
lfitzgerald@ngkf.com cspalding@ngkf.com
703-918-0221 703-918-0230
1410 Spring Hill Road, Suite 600, McLean, VA 22102



10400

EATON PLACE

FAIRFAX, VIRGINIA



5TH FLOOR PLAN

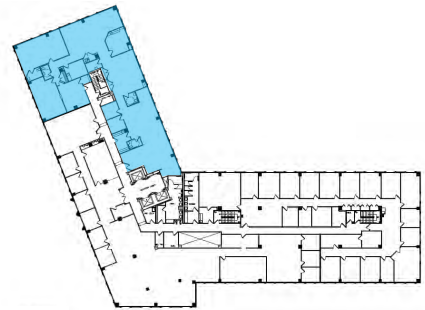
Suite Available

\$23.50 PSF

520 - 5,740 SF

Fully-Plumbed Medical Suite on Top Floor

- 8 office/exam rooms (3 with sinks)
- 4 restrooms
- Existing washer/dryer area with plumbing connection, dedicated outlet, venting, and hot water heater
- Private rear entrance/exit for staff
- Competitive rental rate in great location



CONTACT INFORMATION

Larry FitzGerald
 lfitzgerald@ngkf.com
 703-918-0221

Cole Spalding
 cspalding@ngkf.com
 703-918-0230

1410 Spring Hill Road, Suite 600, McLean, VA 22102



POLINGER COMPANY
 EST. 1947