

# Land For Sale

## +/- 9.32 Acres



### W New Hope Road, Rogers | AR

Maintained +/- 9.32 acres of land in Rogers, Arkansas. Property is surrounded by residential housing and is less than a 5 minute drive to the Pinnacle Hills Promenade and I-49. This property is zoned multi-family and a great location for apartments & commercial development.

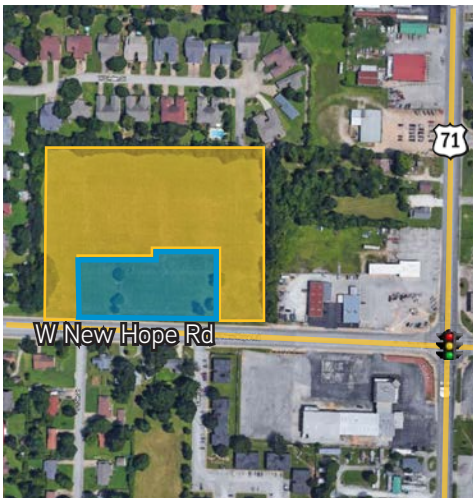
Contact us:

Wade Smith

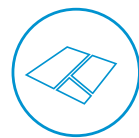
Brokerage | Arkansas

+1 479 845 1518

wade.smith@colliers.com



### FEATURES



+/- 9.32 Acres

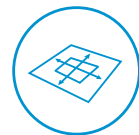


Zoned Residential Multi-Family & C-2



Adjacent to brand-new shopping center and within walking distance to a Walmart Neighborhood Market.

# \$1,100,000



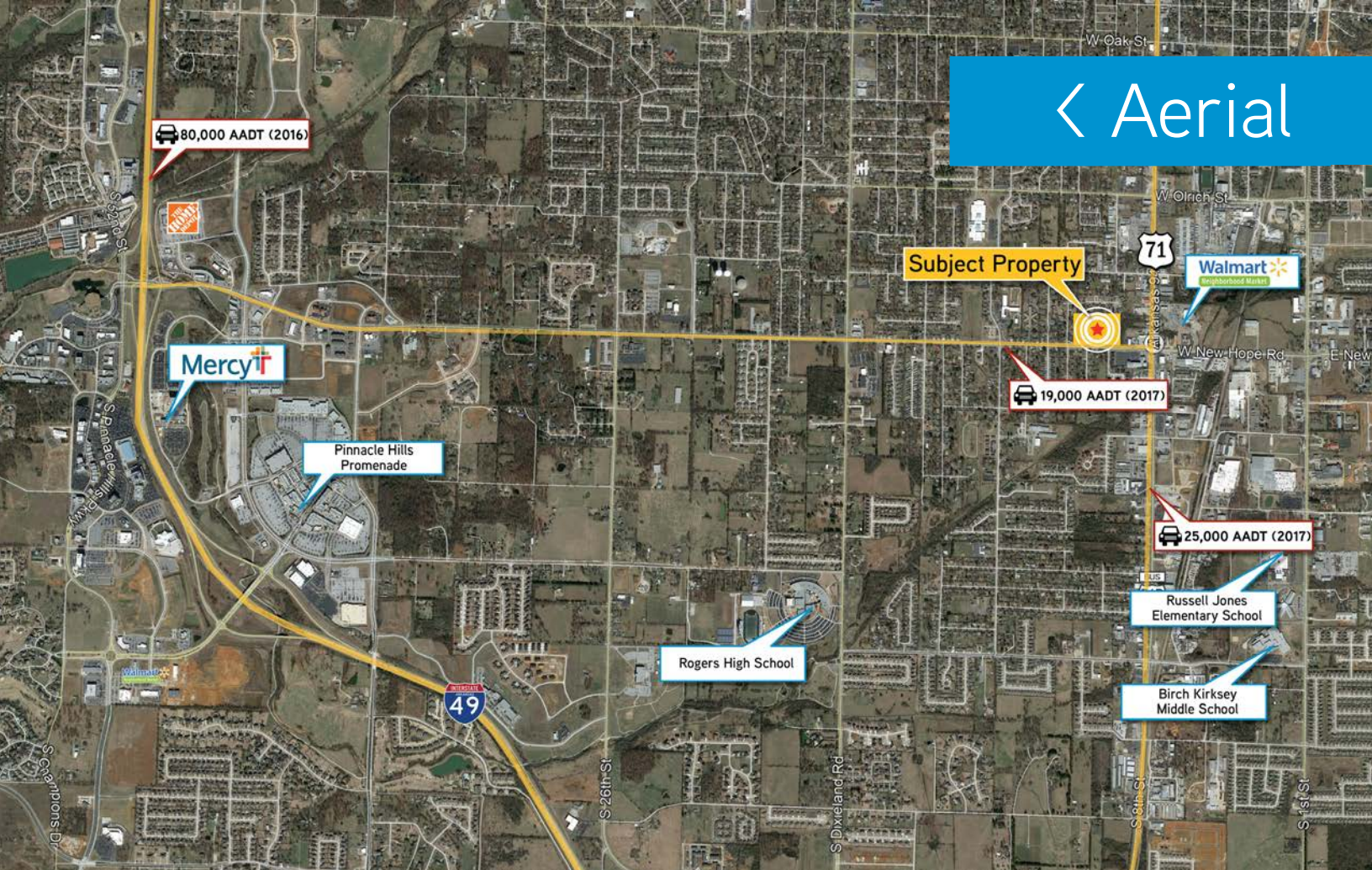
\$2.71 PSF



This document has been prepared by Colliers International for advertising and general information only. Colliers International makes no guarantees, representations or warranties of any kind, expressed or implied, regarding the information including, but not limited to, warranties of content, accuracy and reliability. Any interested party should undertake their own inquiries as to the accuracy of the information. Colliers International excludes unequivocally all inferred or implied terms, conditions and warranties arising out of this document and excludes all liability for loss and damages arising there from. This publication is the copyrighted property of Colliers International and/or its licensor(s). ©2019. All rights reserved.

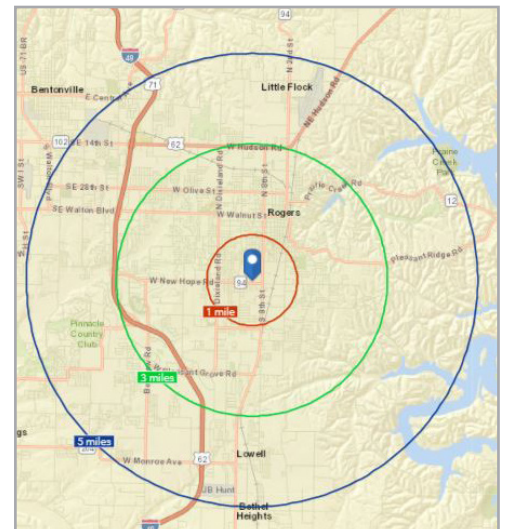
Colliers International  
4204 S. Pinnacle Hills Pkwy | Suite 102  
Rogers, AR 72758  
P: +1 479 636 9000  
www.colliers.com





## Area Demographics

	1 Mile	3 Mile	5 Mile
Population (2017)	8,346	46,952	89,399
Projected Population (2022)	9,103	51,371	99,028
Average Household Income (2017)	\$60,078	\$64,471	\$78,527
Proj. Average Household Income (2022)	\$66,661	\$72,152	\$88,499
Households (2017)	2,824	16,262	32,452



Contact us:

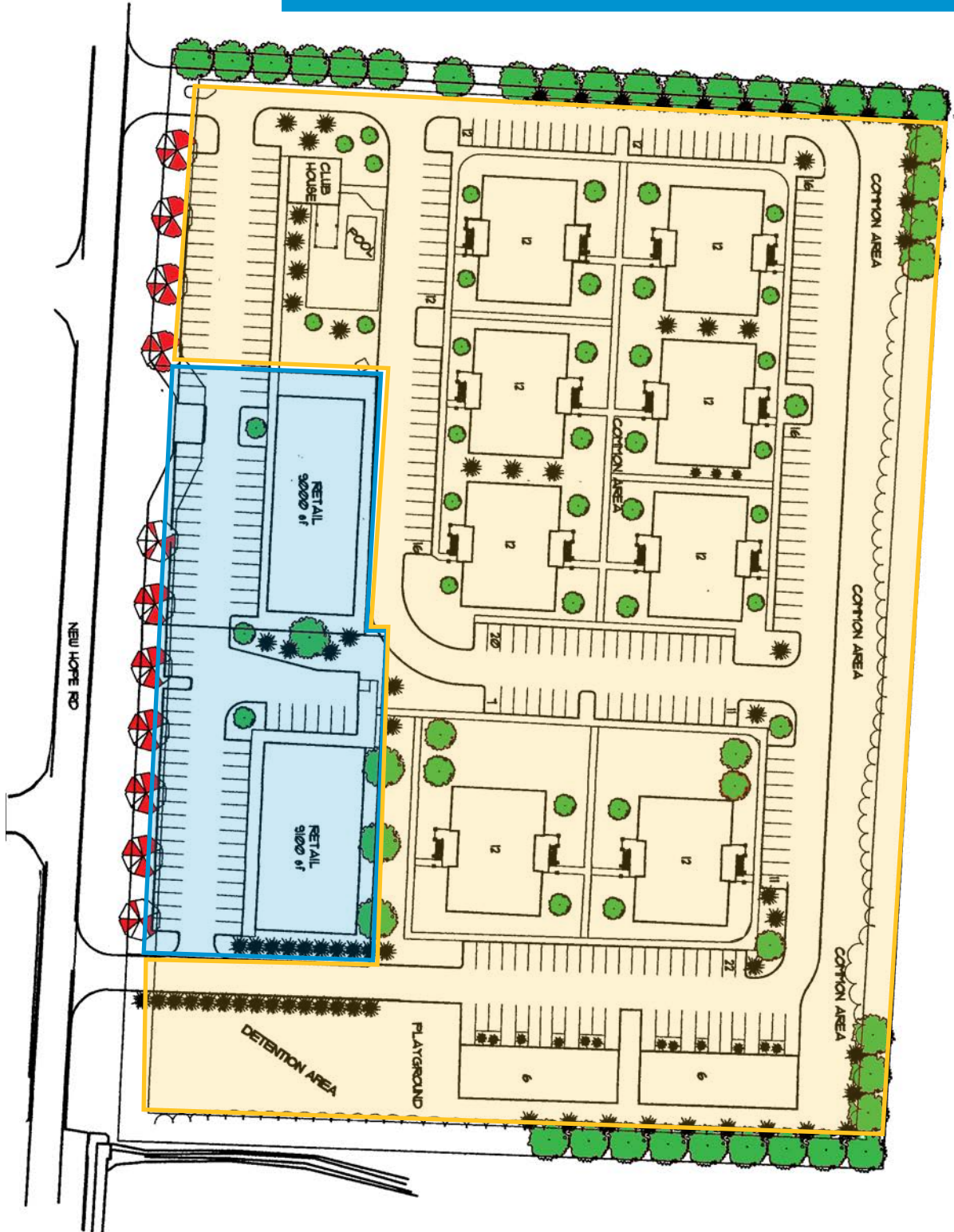
**Wade Smith**  
 Brokerage | Arkansas  
 D: +1 479 845 1518  
 wade.smith@colliers.com

Colliers International  
 4204 S. Pinnacle Hills Pkwy | Suite 102  
 Rogers, AR 72758  
 P: +1 479 636 9000  
 www.colliers.com





# < Proposed Development



Contact us:

**Wade Smith**  
Brokerage | Arkansas  
D: +1 479 845 1518  
wade.smith@colliers.com

Colliers International  
4204 S. Pinnacle Hills Pkwy | Suite 102  
Rogers, AR 72758  
P: +1 479 636 9000  
www.colliers.com

