

# EXECUTIVE SUMMARY

## RECHE CANYON PROPERTY

- 304.32 Acres of Vacant Land located in Riverside County, an area known as Reche Canyon.
- A Tentative Tract Map application was filed on June 7, 2005; application # is 33614 to allow for R-1 zoning with a proposed General Plan of Low Density Residential.
- 110 single family home lots 95- ½ acre lots 3000 sf homes / 15 - 1 acre lots 4000 sf homes.
- Water, electrical, gas, septic available

The respective parcel numbers are as follows:

| <u>APN #</u> | <u># of Acres</u>  | <u>Current Zone</u> |
|--------------|--------------------|---------------------|
| 259-060-002  | .14 acres          | R-A-2 ½             |
| 259-080-006  | 79 acres           | R-A-5               |
| 259-080-008  | 70.5 acres         | R-A-20              |
| 259-080-009  | 40 acres           | R-A-20 & R-A -5     |
| 259-090-005  | 6.97 acres         | R-A -5              |
| 259-100-016  | 42.19 acres        | R-A -5              |
| 259-100-017  | 8.34 acres         | R-A -5              |
| 259-100-018  | <u>57.18</u> acres | R-A -5              |

**Total Acres                      304.32 acres**

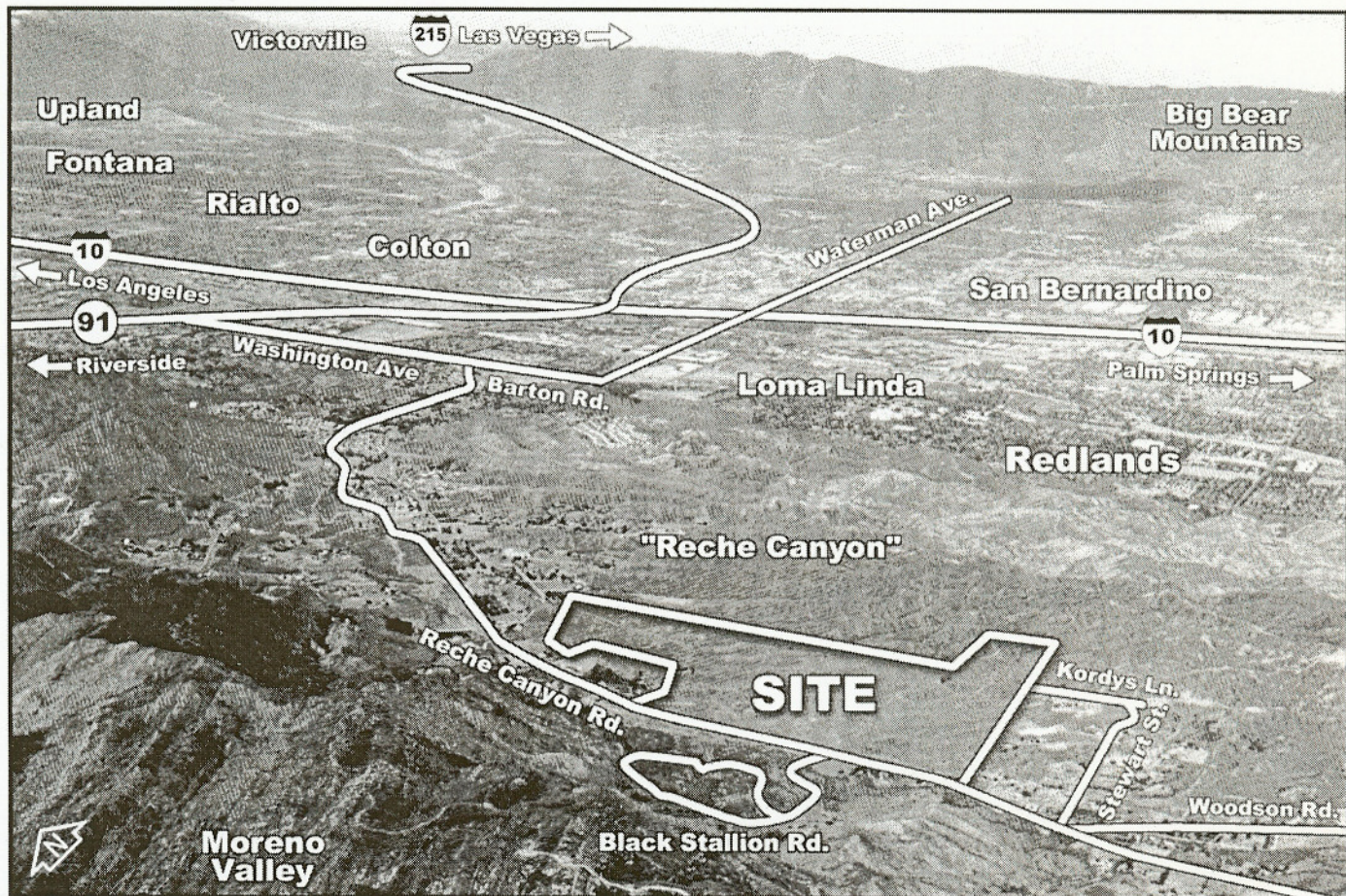
- Thomas Bros Map Coordinates 1999 edition: Page # 647 6/B, C, D  
Page # 647 7/C, D
- County preliminary comments and corrections available upon request
- Copy of Tentative Tract Map available upon request
- Nearby similar project "Crystal Ridge" info: [www.recheinfo.com](http://www.recheinfo.com)  
(92 homes from low \$700's to \$900,000)

**CONTACT:                      Kathy Clark**  
**Coldwell Banker Commercial 1<sup>st</sup> Class**  
**Cell:      626-664-3050**  
**Email: [KathyEClark@mail.com](mailto:KathyEClark@mail.com)**  
**Fax:      626-608-2477**

**AVAILABLE**

# ±304 Acre Development Opportunity

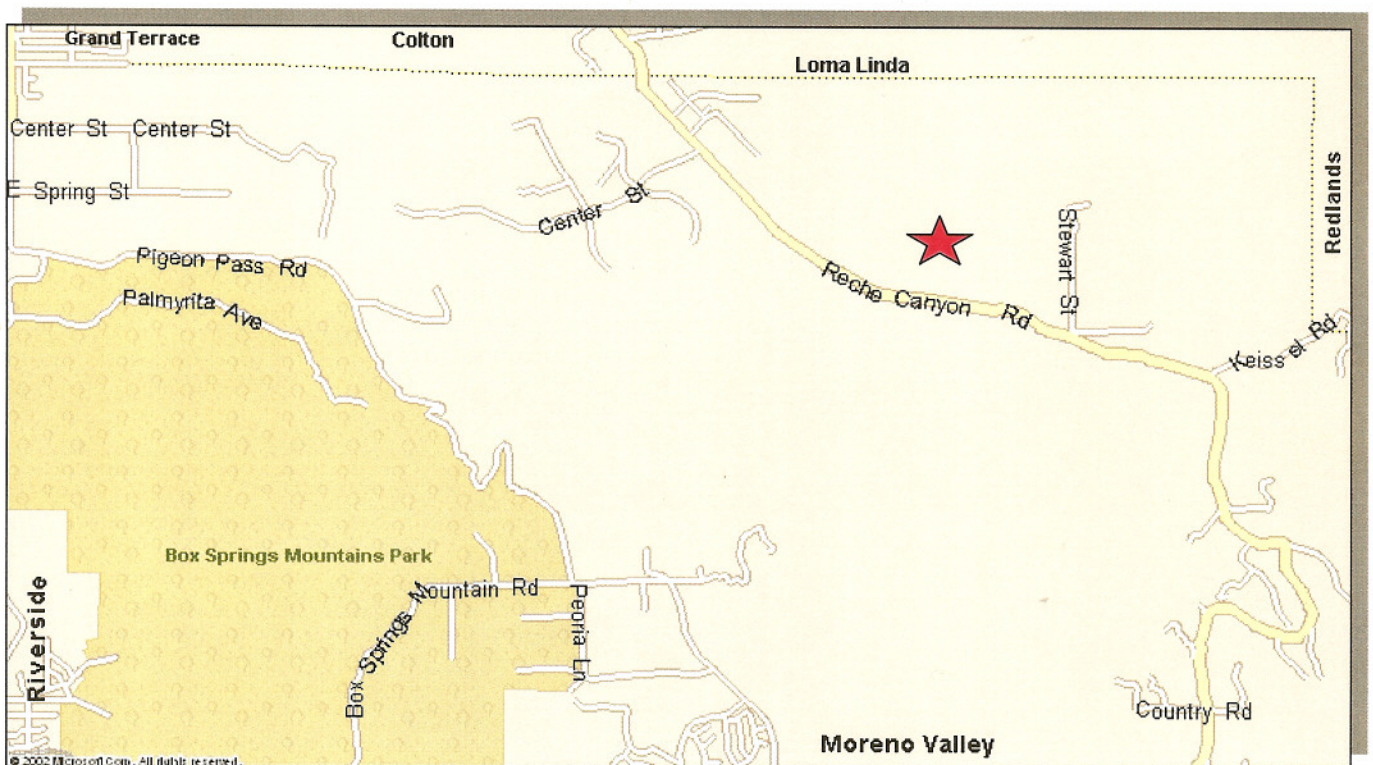
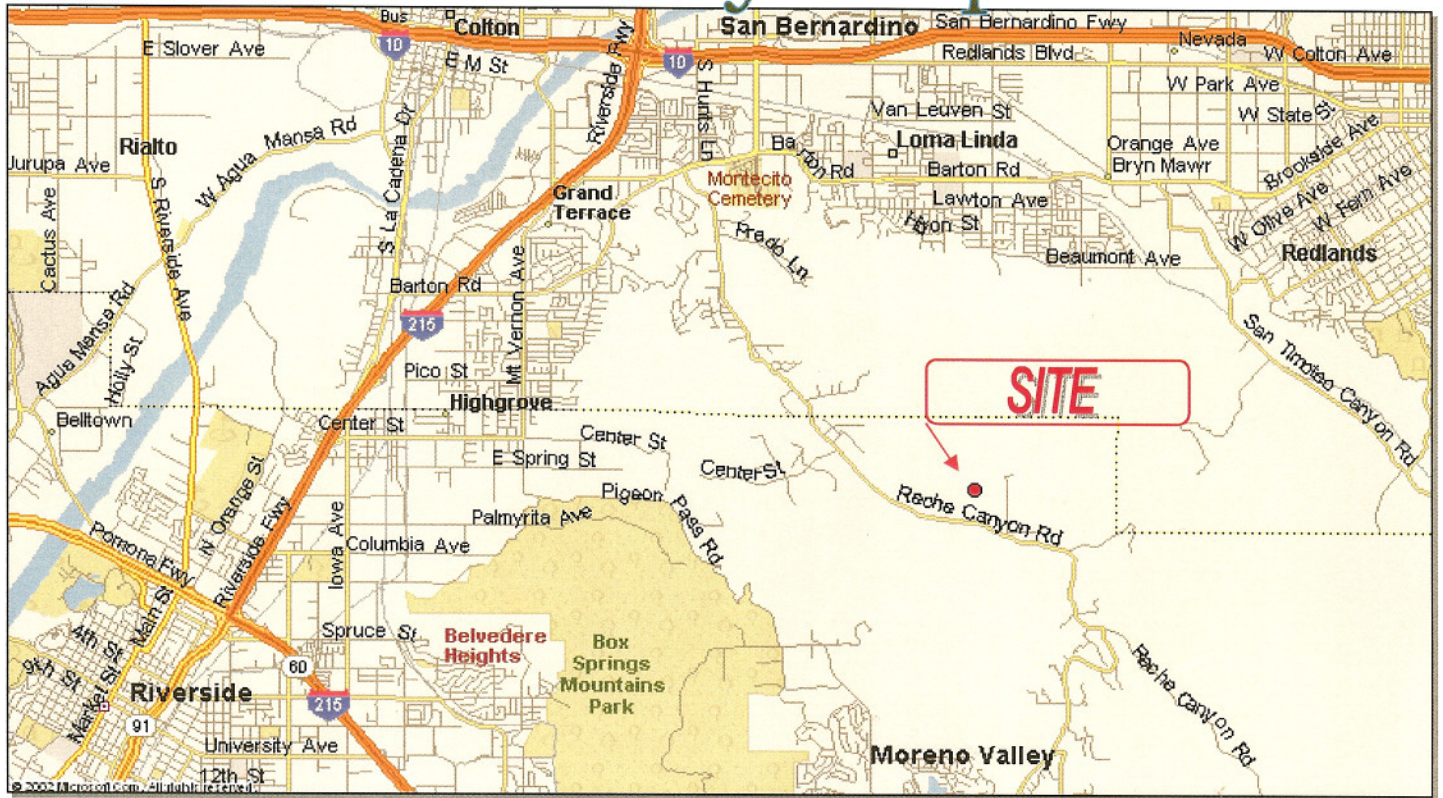
*"Estate Lots - Custom Home Sites - Ranch Estates"*



Eastside of Reche Canyon Rd. at Black Stallion Rd. • Riverside County, California

Not to Scale • Approx. Boundary

# ±304 Acres Reche Canyon Vicinity Map



# Southern California Freeway Maps

## ±304 AC

