

888

WEST BIG BEAVER

TROY, MICHIGAN



CBRE

PROPERTY FEATURES

- Corporate headquarters opportunity |
- Building Signage with I-75 Exposure |
- New ownership and management |
- Major interior and exterior renovations underway |
- Full lobby renovation completed |
- Construction of new parking deck underway |
- Morton's Steakhouse, Melting Pot & Shake Shack on-site |
- On-site security |
- New exciting restaurants coming soon |

PHOTO GALLERY



S I T E M A P



T I M I N G P L A N

● Restaurant to open	Q-4, 2018
● Apartments to open	Q-4, 2019
● Retail Delivery	Q-2, 2018
● Deck to open	Q-2, 2018
● Retail Delivery	Q-4, 2018

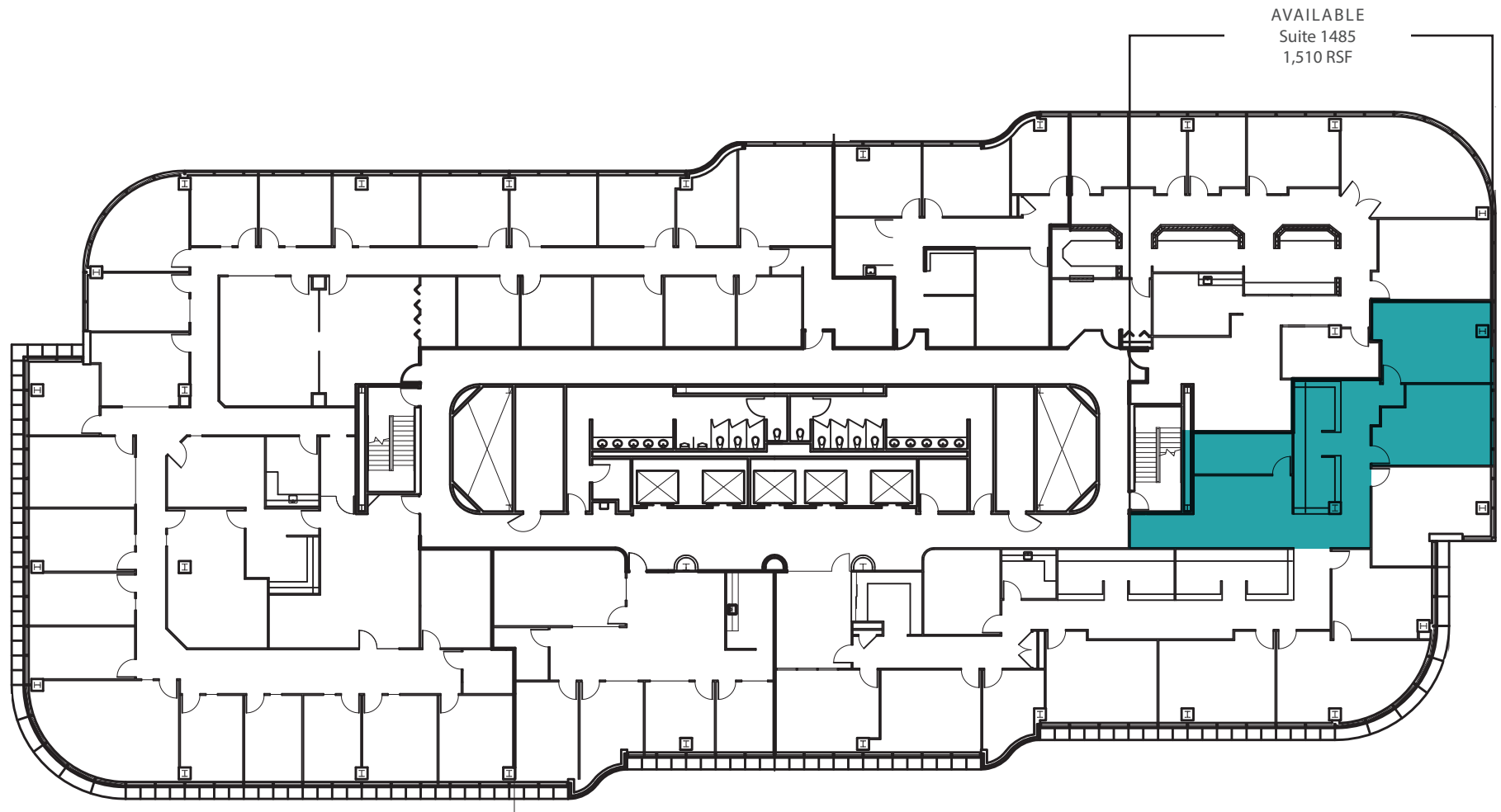


P A R K I N G P L A N

PARKING COUNT SUMMARY

Deck-Grade Level (90 Minute Parking):	186
Parking Lot-Grade Level:	372
Deck-Floors 2-8:	1,282
OVERALL SPACES:	1,840



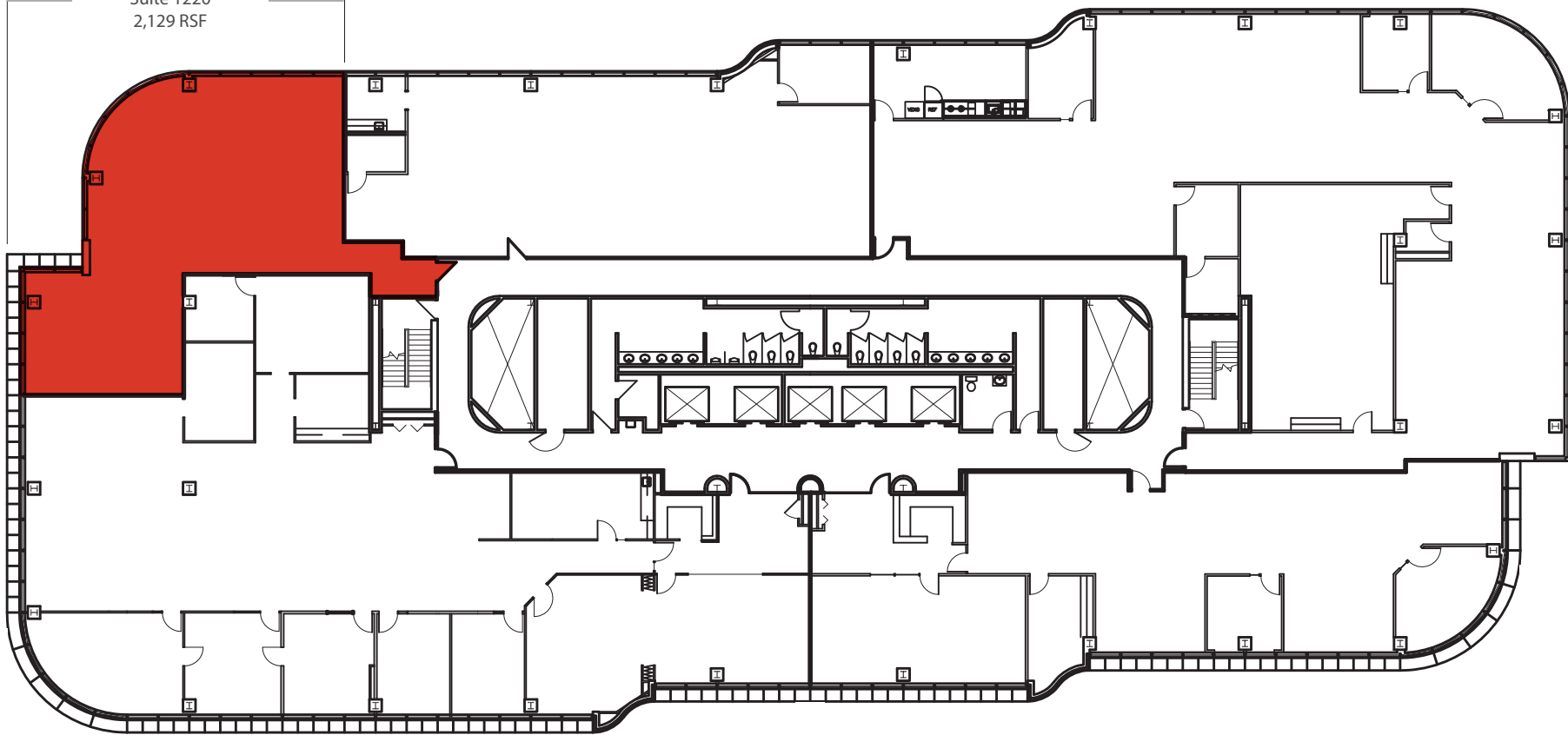


AVAILABLE
Suite 1485
1,510 RSF

EXISTING CONDITIONS
14th Floor
CBRE



AVAILABLE
Suite 1220
2,129 RSF

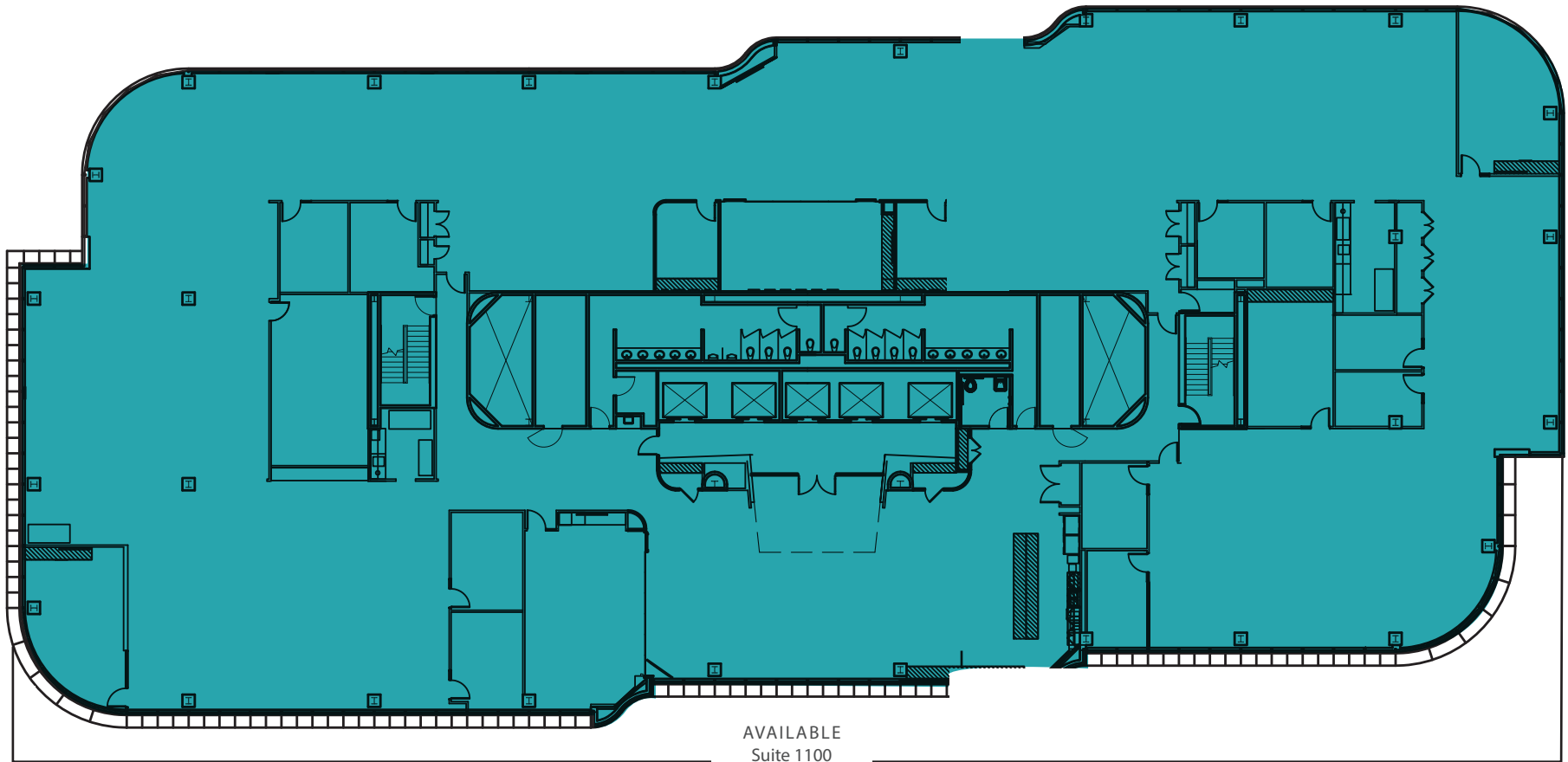


EXISTING CONDITIONS

12th Floor

CBRE





AVAILABLE
Suite 1100
24,179 RSF

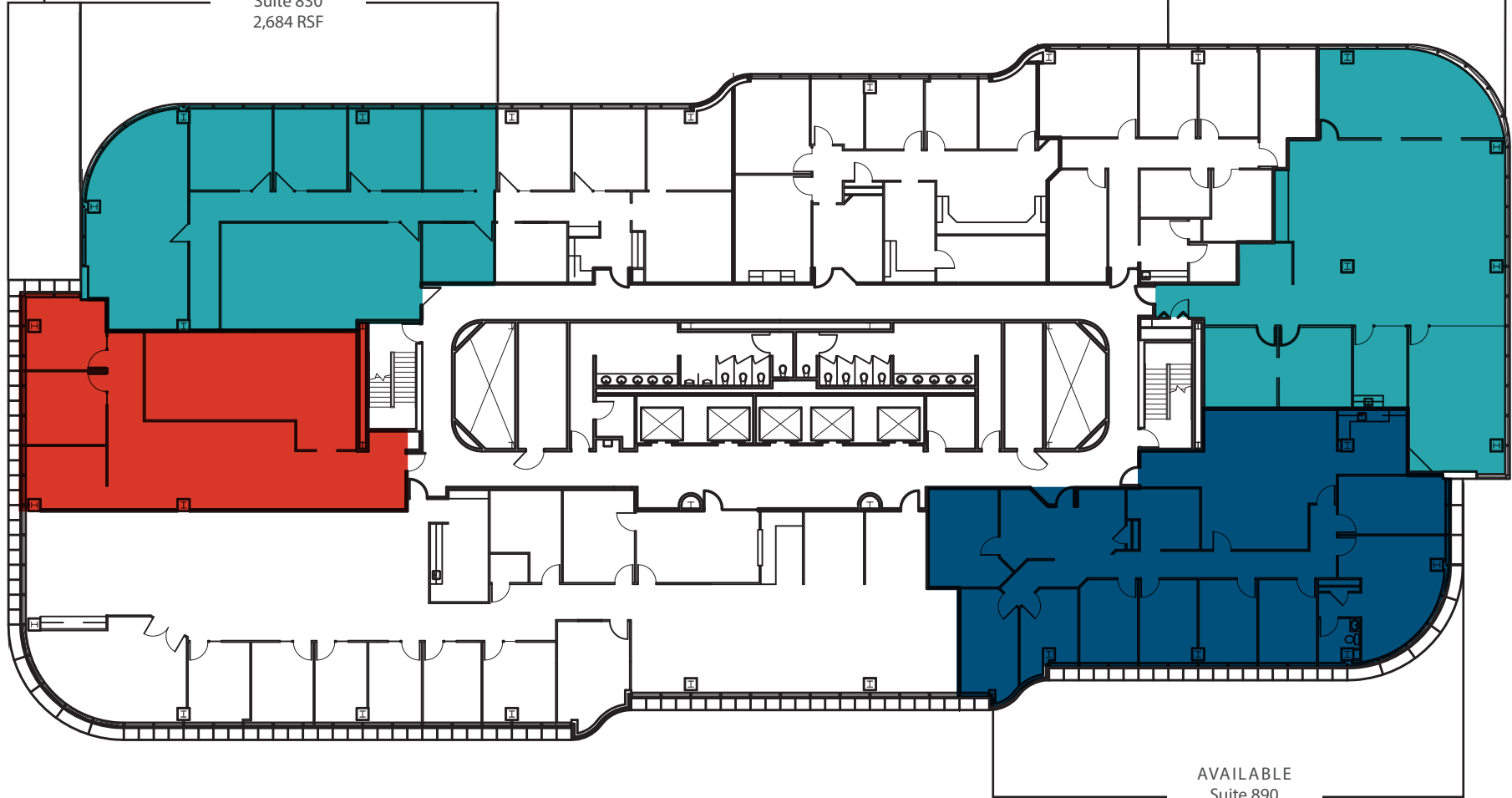
EXISTING CONDITIONS
11th Floor
CBRE



AVAILABLE
Suite 810
2,108 RSF

AVAILABLE
Suite 830
2,684 RSF

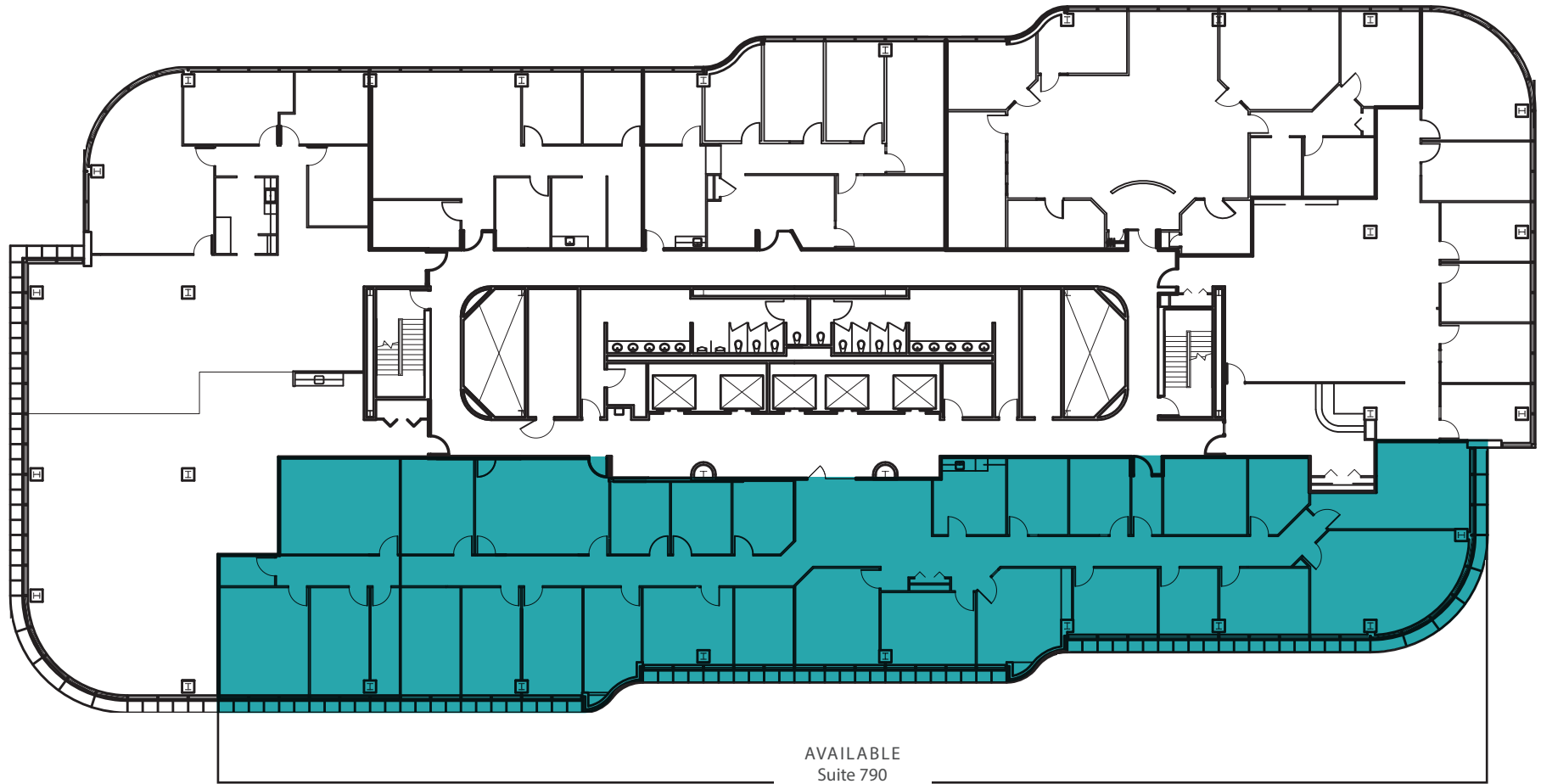
AVAILABLE
Suite 870
3,089 RSF



AVAILABLE
Suite 890
3,408 RSF

EXISTING CONDITIONS
8th Floor
CBRE



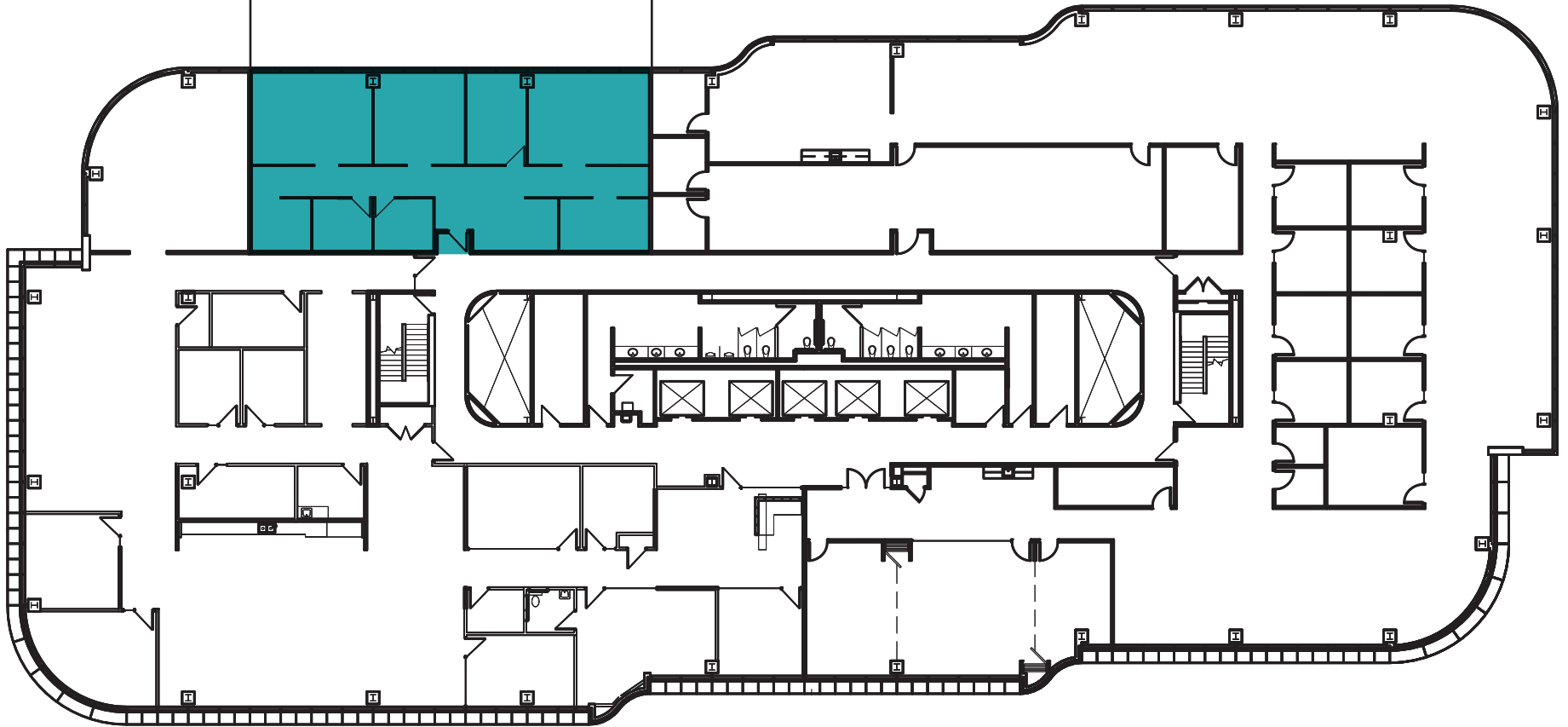


AVAILABLE
Suite 790
7,495 RSF
Available 8/1/2019

EXISTING CONDITIONS
7th Floor
CBRE

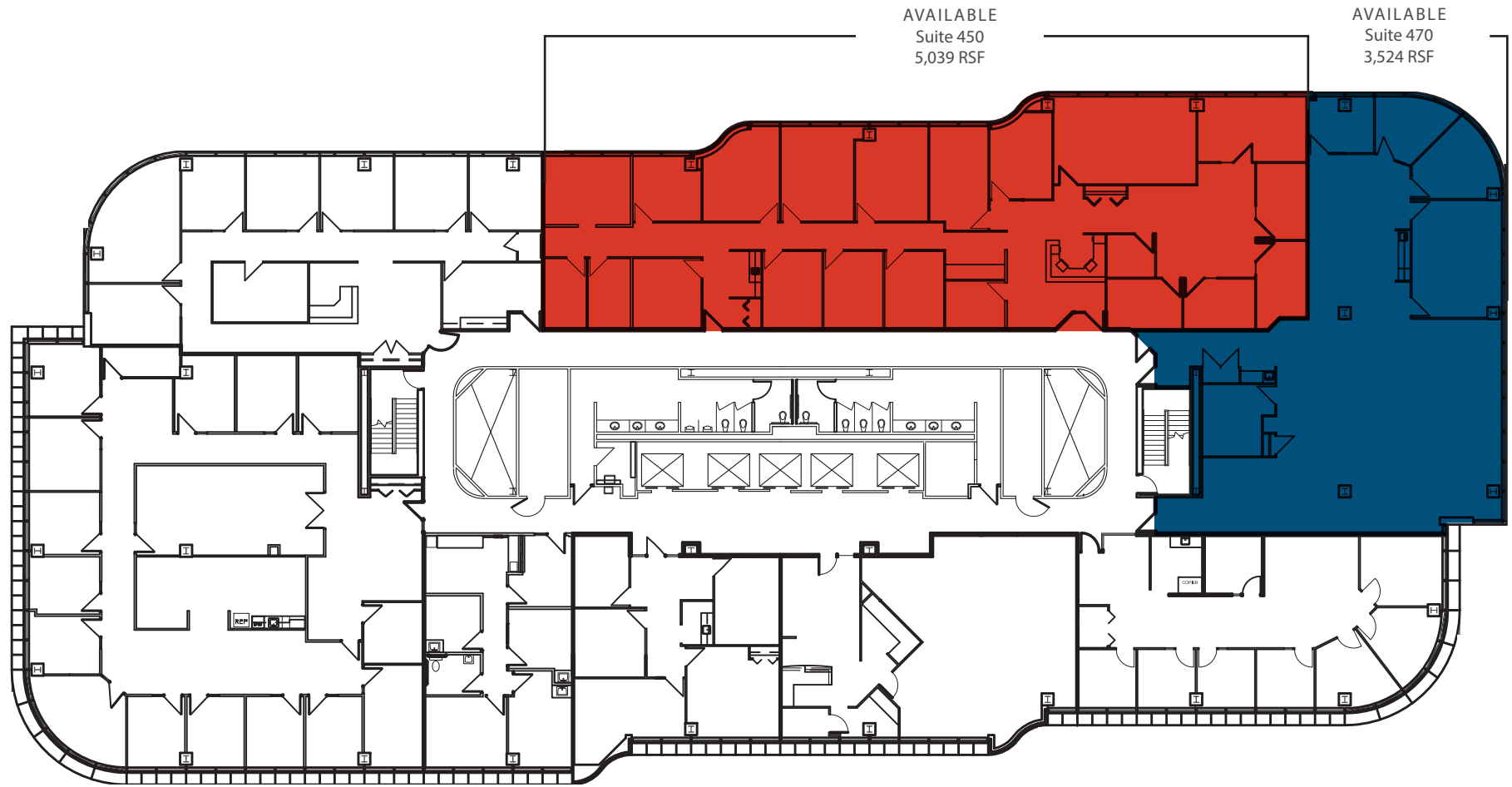


AVAILABLE
Suite 560
2,150 RSF



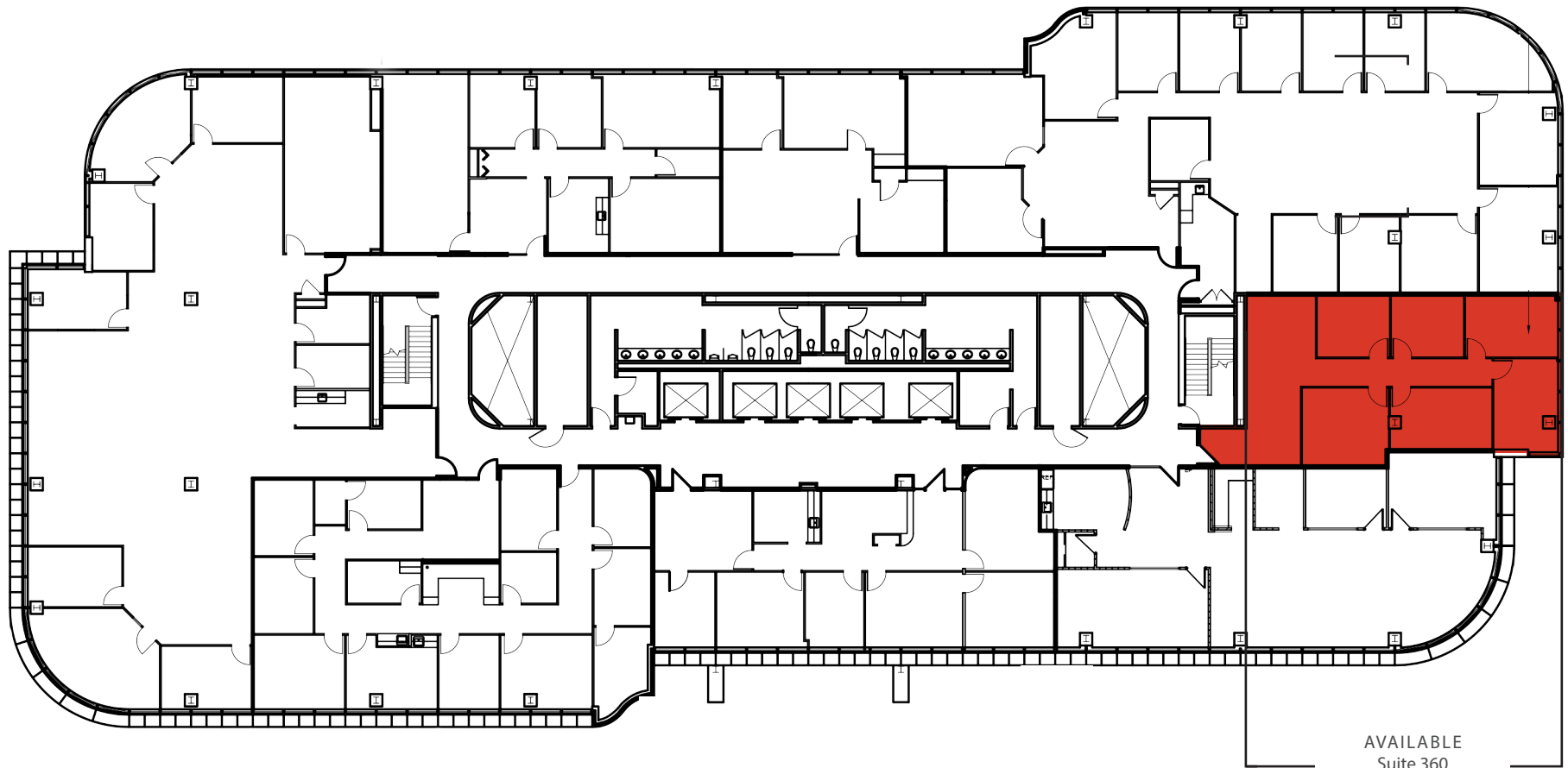
EXISTING CONDITIONS
5th Floor
CBRE





EXISTING CONDITIONS
4th Floor
CBRE





AVAILABLE
Suite 360
1,589 RSF
60 Days Notice

EXISTING CONDITIONS
3rd Floor
CBRE



CONTACT US

DAN MORSE

First Vice President
+1 248 936 6822
dan.morse@cbre.com

BRENDAN GEORGE

Senior Vice President
+1 248 351 2039
brendan.george@cbre.com

JASPER HANIFI

Associate
+1 248 351 2020
jasper.hanifi@cbre.com

