

# Maplewood II B

1636 Gervais Ave. E, Suites 1-15  
Maplewood, MN 55109

FOR LEASE



## Property Features

Multi-tenant office / warehouse building with a sharp brick exterior. Quick access to 694, 35E, and Highway 36.

Building Sq. Ft. : 53,807

- Highway 36 Visibility
- Docks and Drive-ins
- 3-phase power
- Large office users welcome!



Rick Sand  
952-475-5135  
rsand@steinerdevelopment.com

Steiner Development, Inc.  
3610 County Rd. 101, Wayzata, MN 55391  
Tel: 952.473.5650 Fax: 952.473.7058

Steiner  
Development, Inc.



# Maplewood II B

1636 Gervais Ave. E, Suites 1-15  
Maplewood, MN 55109

FOR LEASE

1636 Gervais Ave.,  
Suites 11-12  
Maplewood MN 55109

Office Sq. Ft. : 3,500

Warehouse Sq. Ft. : 3,526

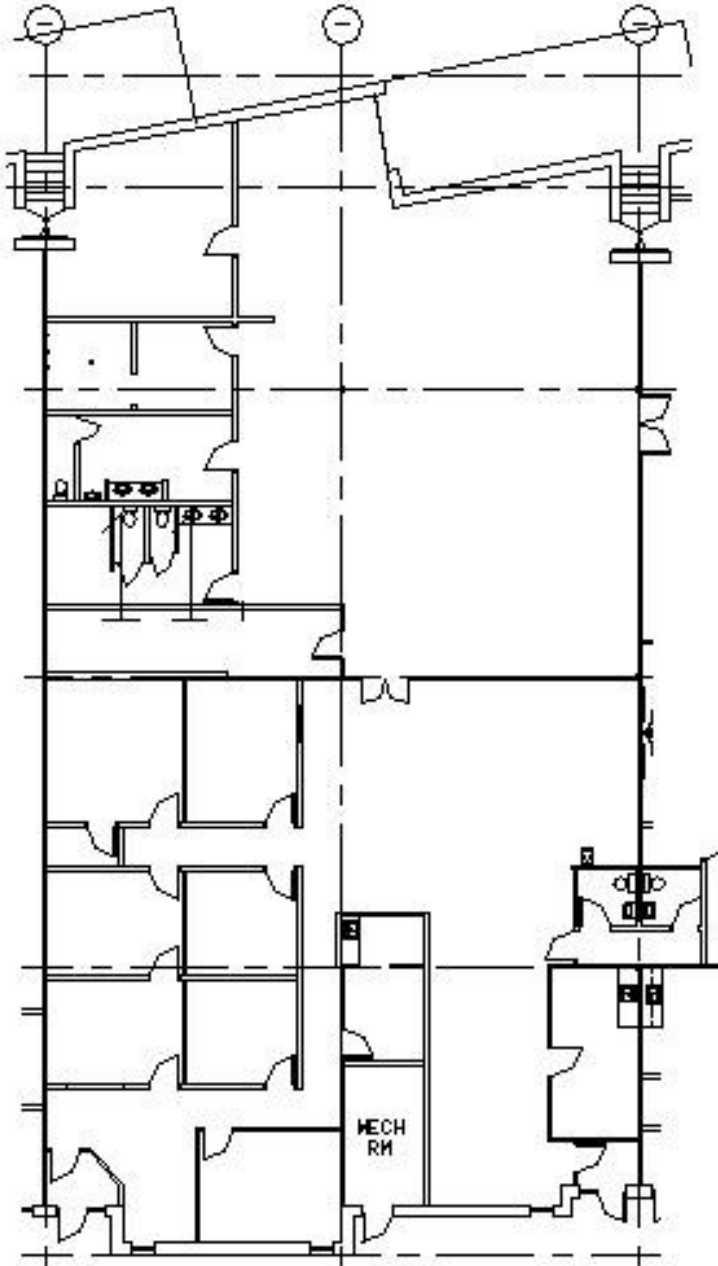
Loading : dh

Clear Height : 14

Office Rate : \$8.00

Warehouse Rate : \$4.00

Tax & Cam (est.): \$2.35



The information herein was obtained from sources believed to be reliable; however, Steiner Development makes no guarantees, warranties, or representations as to the completeness or accuracy thereof. The presentation of this property is submitted subject to errors, omissions, change of price or conditions prior to sale or lease, or withdrawal without notice.

Rick Sand  
952-475-5135  
rsand@steinerdevelopment.com

Steiner Development, Inc.  
3610 County Rd. 101, Wayzata, MN 55391  
Tel: 952.473.5650 Fax: 952.473.7058

Steiner  
Development, Inc.