



FOR
LEASE



NORTHSIDE SQUARE *Office*

29399 US Highway 19 N
Clearwater, FL 33761

- › Located Between Countryside Mall and Curlew Road
- › Parking Ratio of 4/1,000 SF
- › Highly Visible Location
- › Signage Available on US Hwy 19
- › On-site Banking and Restaurants (Bob Evans & Olive Garden)
- › 795 SF - 4,064 SF Available

Lease rate:
\$19.50-20.50
PSF , Full Service

CONTACT US:

Alan Feldshue
Executive Managing Director | Office Services
727 442 7296
alan.feldshue@colliers.com

Colliers International
311 Park Place Blvd Suite 600
Clearwater, FL
www.colliers.com



Accelerating success.

This document has been prepared by Colliers International for advertising and general information only. Colliers International makes no guarantees, representations or warranties of any kind, expressed or implied, regarding the information including, but not limited to, warranties of content, accuracy and reliability. Any interested party should undertake their own inquiries as to the accuracy of the information. Colliers International excludes unequivocally all inferred or implied terms, conditions and warranties arising out of this document and excludes all liability for loss and damages arising there from. This publication is the copyrighted property of Colliers International and/or its licensor(s). ©2018. All rights reserved.

ALAN FELDSHUE
Executive Managing Director | Office Services
727 442 7296
alan.feldshue@colliers.com

COLLIERS INTERNATIONAL
311 Park Place Blvd Suite 600
Clearwater, FL
www.colliers.com

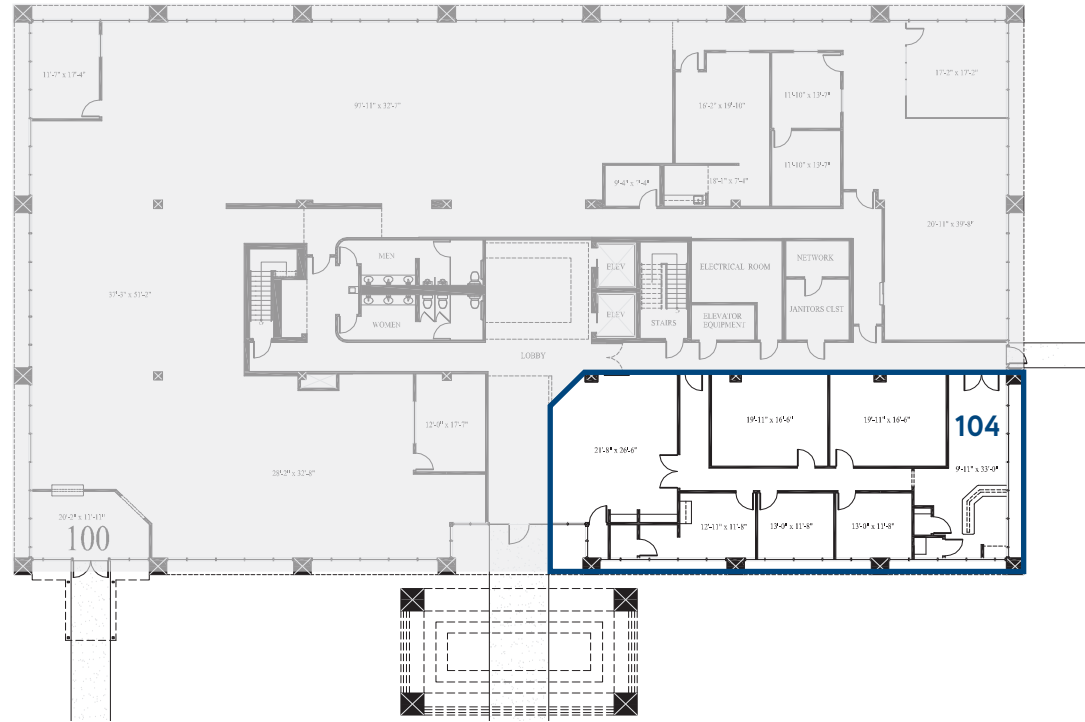


Accelerating success.

Northside Square > Availabilities

FIRST FLOOR

> Suite 104: 2,938 SF



THIRD FLOOR

- > Suite 340: 2,902 SF
- > Suite 360: 795 SF
- > Suite 365: 1,136 SF
- > Suite 370: 2,133 SF



Area Demographics (5 mile radius)



Current Population
210,118



Households
95,768



Average Household Income
73,464



Annual Consumer Spending
Apparel: \$140,011
Entertainment: \$26,912
Pets/Toys/Hobbies: \$64,474
Food & Alcohol: \$324,287
(away from home)

