

13233 HANCOCK DRIVE  
TAYLOR, MICHIGAN

OFFICE FOR SALE OR LEASE  
6,000 Square Feet Available



**SIGNATURE  
ASSOCIATES**  
KNOW SIGNATURE | KNOW RESULTS



## PROPERTY FEATURES

- 6,000 square feet available
- Immediate occupancy
- Freestanding light industrial zoned office building
- Located on a quiet street near I-75 Freeway
- Property features a newer roof (3 years old)
- new HVAC units (1 year old)
- Completely remodeled interior in 2014.
- Lease Rate: TBD
- Sale Price: TBD

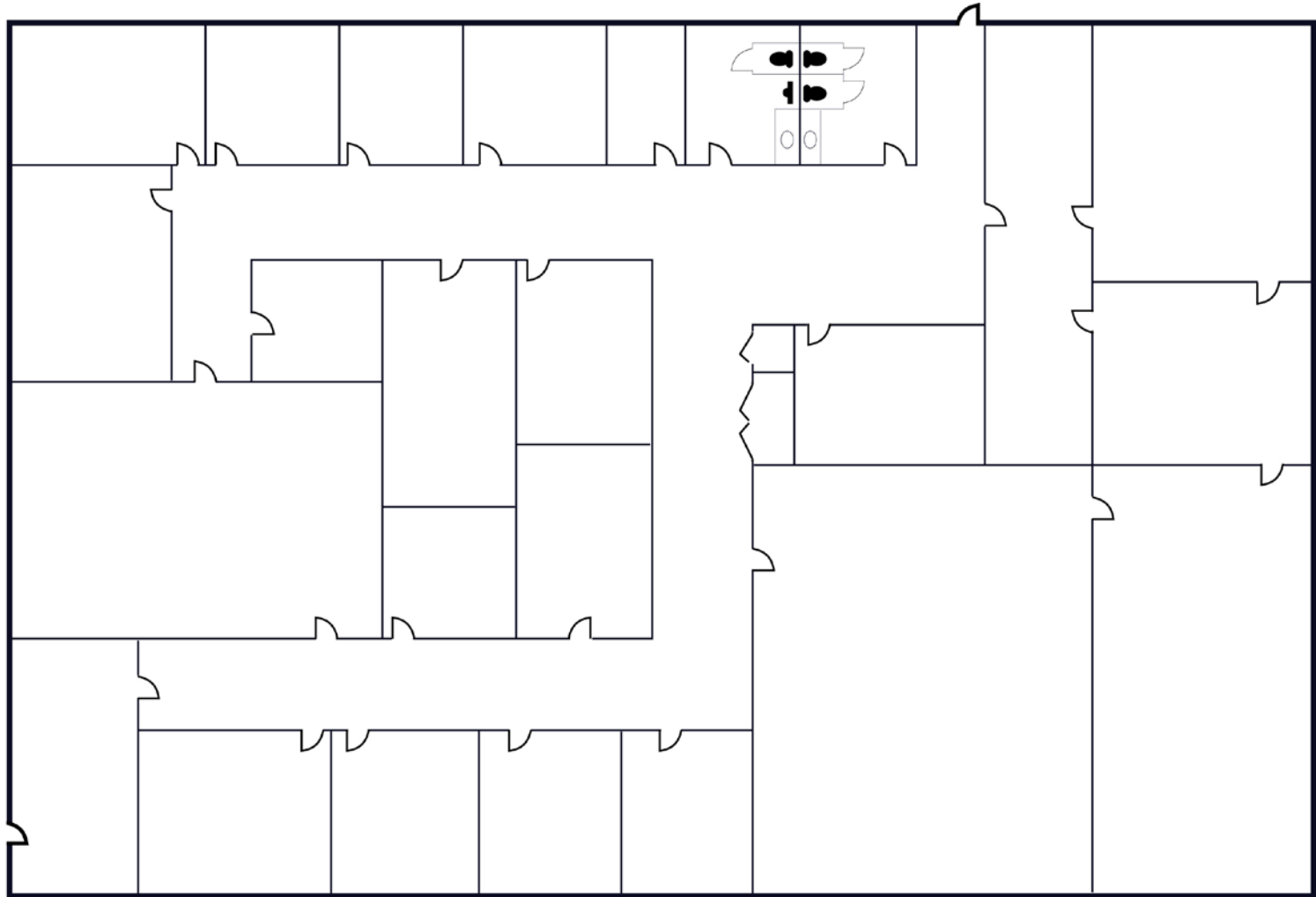


For more information, please contact:

**JUSTIN GAFFREY**  
(248) 799 3143  
jgaffrey@signatureassociates.com

**SIGNATURE ASSOCIATES**  
One Towne Square, Suite 1200  
Southfield, MI 48076  
www.signatureassociates.com

Floor Plan



For more information, please contact:

**JUSTIN GAFFREY**  
(248) 799 3143  
jgaffrey@signatureassociates.com

**SIGNATURE ASSOCIATES**  
One Towne Square, Suite 1200  
Southfield, MI 48076  
www.signatureassociates.com

# 13233 Hancock Drive – Taylor, Michigan

Office For Sale or Lease

6,000  
Square Feet  
AVAILABLE

Aerials



For more information, please contact:

**JUSTIN GAFFREY**  
(248) 799 3143  
jgaffrey@signatureassociates.com

**SIGNATURE ASSOCIATES**  
One Towne Square, Suite 1200  
Southfield, MI 48076  
www.signatureassociates.com