

OFFICE FOR LEASE - GHENT

200 W. 21st Street
Norfolk, VA



OFFICE

- 2,300 SF available for lease
- \$14/SF full service, net janitorial
- Join tenants S. Ray Barrett & La Boheme
- Parking available on the side of the building & on the street
- Zoned C-2

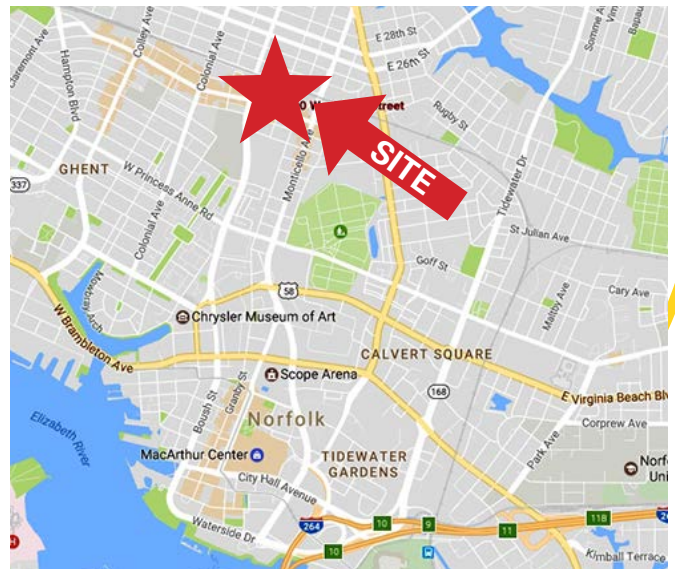
Demographics (2016)

	1 Mile	3 Miles	5 Miles
Population	22,486	109,571	254,478
Households	9,774	42,079	98,022
Ave. HH Inc.	\$63,218	\$63,409	\$58,339

CONTACT:

LINDSAY HIMELRIGHT, CCIM
(757) 640-9462

lindsayhimelright@harveylindsay.com

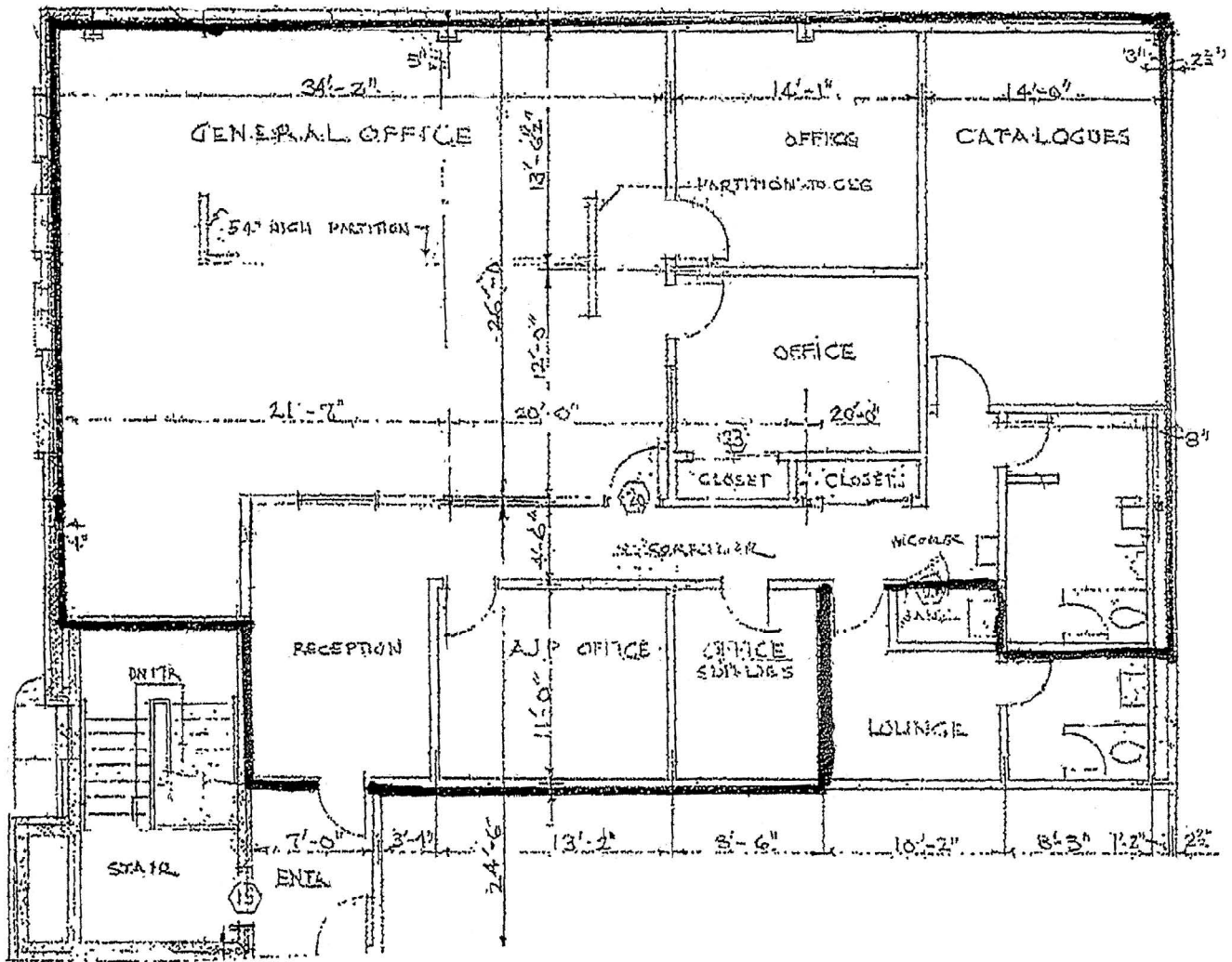


HARVEY LINDSAY
COMMERCIAL REAL ESTATE

A Tradition of Forward Thinking

OFFICE FOR LEASE - GHENT

200 W. 21st Street
Norfolk, VA



CONTACT:

LINDSAY HIMELRIGHT, CCIM

(757) 640-9462

lindsayhimelright@harveylindsay.com

HARVEY LINDSAY

COMMERCIAL REAL ESTATE

A Tradition of Forward Thinking

The information contained herein has been obtained from sources believed to be reliable but is not warranted.

We cannot be responsible for errors, omissions, withdrawal, or prior lease or sale.

OFFICE FOR LEASE IN GHENT - 200 W. 21st Street, Norfolk, VA



CONTACT:

LINDSAY HIMELRIGHT, CCIM

(757) 640-9462

lindsayhimelright@harveylindsay.com

HARVEY LINDSAY

COMMERCIAL REAL ESTATE

A Tradition of Forward Thinking

The information contained herein has been obtained from sources believed to be reliable but is not warranted.

We cannot be responsible for errors, omissions, withdrawal, or prior lease or sale.