

INDUSTRIAL MANUFACTURING FOR LEASE



NEWER INDUSTRIAL MANUFACTURING

building in Hayden with a loading dock. The building is wood stick framed and has a metal roof and siding. The project is attractive and is in immaculate condition. Zoned Light Industrial in the City of Hayden. Phase two was built in 2008. Unit 2 is approx. 8,150 sqft. There is a two stall loading dock with two 10 foot roll up doors. The building also has three additional 12 ft rollup doors, 800 amp 3-Phase electrical supply and a reinforced 5 inch concrete floor.

9856-9874 N Chelsea Court, Hayden, ID 83835

AIN: 238954, 238953

\$4,890 Per Month, Modified Gross.

CCIMTEAM.COM

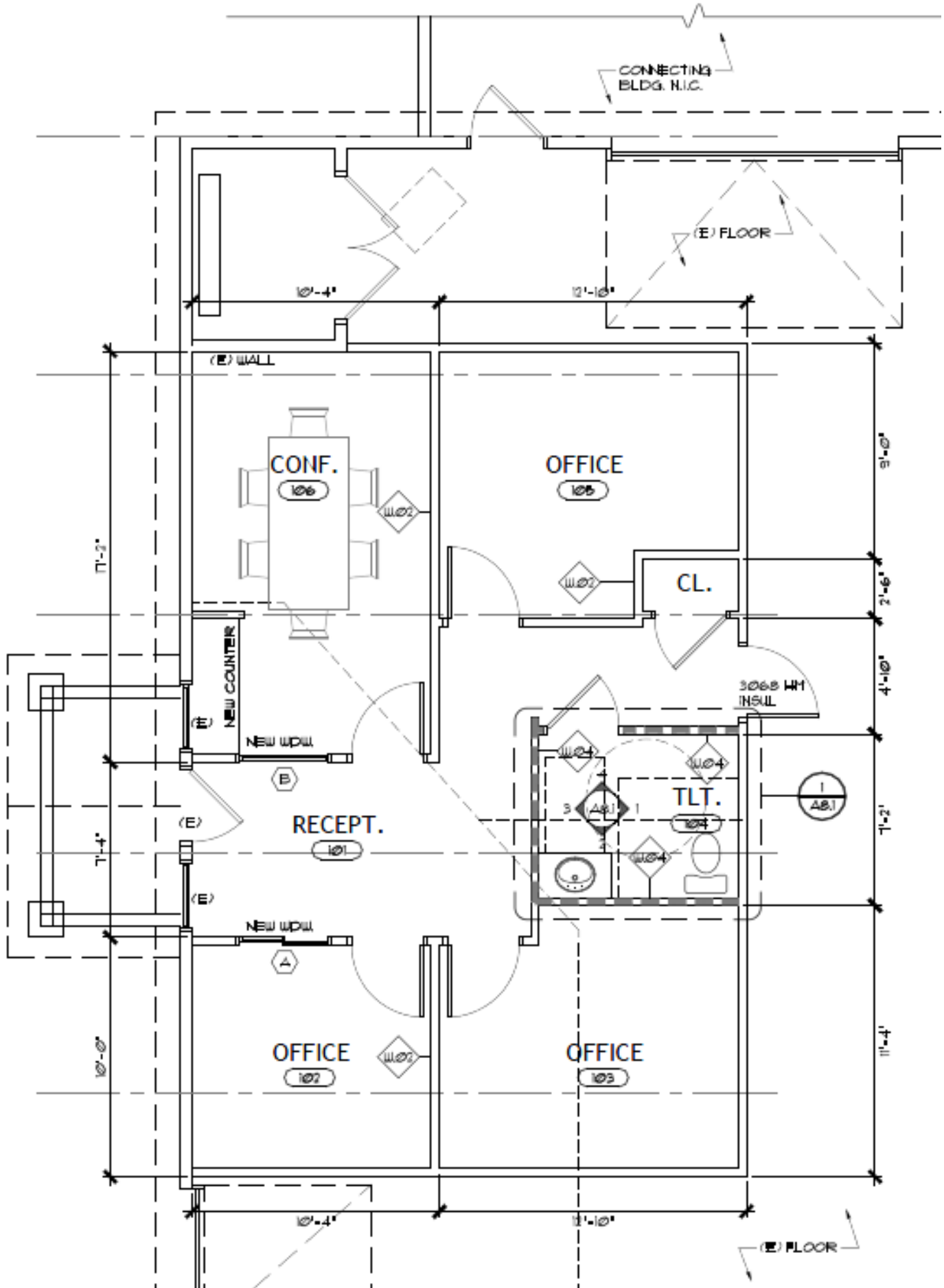
Craig Hunter
CCIM

208.929.2929
hunter@ccim.net

Rob Kannapien
CCIM

208.704.3832
robk@ccim.net







CdA Airport

W Miles Avenue



W Dakota Avenue

Hayden Lake Irrigation

Chelsea Court



N Ramsey Road



W Hayden Avenue

