

# GROWERS square

THE HEART OF WALNUT CREEK

FULL BUILDING  
OPPORTUNITY

1656 NORTH CALIFORNIA BOULEVARD, WALNUT CREEK | ±22,916 SF



FOR MORE INFORMATION  
PLEASE CONTACT

BRECK LUTZ BLUTZ@NGKF.COM  
925.974.0109 | CA RE LICENSE #00936859

KNUTE BUCKLEW KBUCKLEW@NGKF.COM  
925.974.0240 | CA RE LICENSE #01332731

DANNY BARTZ DBARTZ@NGKF.COM  
925.974.0231 | CA RE LICENSE #01971819

WWW.GROWERS-SQUARE.COM



THE DISTRIBUTOR OF THIS COMMUNICATION IS PERFORMING ACTS FOR WHICH A REAL ESTATE LICENSE IS REQUIRED. THE INFORMATION CONTAINED HEREIN HAS BEEN OBTAINED FROM SOURCES DEEMED RELIABLE BUT HAS NOT BEEN VERIFIED AND NO GUARANTEE, WARRANTY OR REPRESENTATION, EITHER EXPRESS OR IMPLIED, IS MADE WITH RESPECT TO SUCH INFORMATION. TERMS OF SALE OR LEASE AND AVAILABILITY ARE SUBJECT TO CHANGE OR WITHDRAWAL WITHOUT NOTICE.



# GROWERS square

THE HEART OF WALNUT CREEK

FULL BUILDING OPPORTUNITY



FREE STANDING BUILDING

HIGH IDENTITY @ CORNER OF N CALIFORNIA & CIVIC DRIVE (60K DAILY CAR COUNT)

6 MINUTE WALK TO WC BART

ADJACENT TO ALL WALNUT CREEK RETAIL

EFFICIENT FLOOR PLATE

STRUCTURED & METERED PARKING DIRECTLY ADJACENT



1656

N. CALIFORNIA BLVD. 29K+ ADT

CIVIC DRIVE 31K+ ADT

FOR MORE INFORMATION PLEASE CONTACT

BRECK LUTZ BLUTZ@NGKF.COM  
925.974.0109 | CA RE LICENSE #00936859

KNUTE BUCKLEW KBUCKLEW@NGKF.COM  
925.974.0240 | CA RE LICENSE #01332731

DANNY BARTZ DBARTZ@NGKF.COM  
925.974.0231 | CA RE LICENSE #01971819

WWW.GROWERS-SQUARE.COM



THE DISTRIBUTOR OF THIS COMMUNICATION IS PERFORMING ACTS FOR WHICH A REAL ESTATE LICENSE IS REQUIRED. THE INFORMATION CONTAINED HEREIN HAS BEEN OBTAINED FROM SOURCES DEEMED RELIABLE BUT HAS NOT BEEN VERIFIED AND NO GUARANTEE, WARRANTY OR REPRESENTATION, EITHER EXPRESS OR IMPLIED, IS MADE WITH RESPECT TO SUCH INFORMATION. TERMS OF SALE OR LEASE AND AVAILABILITY ARE SUBJECT TO CHANGE OR WITHDRAWAL WITHOUT NOTICE.



# GROWERS square

THE HEART OF WALNUT CREEK

FULL BUILDING OPPORTUNITY

**GROWERS SQUARE** IS PERFECTLY LOCATED ON THE HIGH IDENTITY CORNERS OF NORTH CALIFORNIA BLVD AND CIVIC DRIVE. THE PROPERTY IS WITHIN THE **DOWNTOWN WALNUT CREEK DINING & RETAIL CORE** AND A SHORT WALK TO THE WALNUT CREEK BART STATION



COMPLETELY RE-IMAGINED PROJECT PLAZA AND ENHANCED TENANT IDENTITY

FOR MORE INFORMATION PLEASE CONTACT

**BRECK LUTZ** BLUTZ@NGKF.COM  
925.974.0109 | CA RE LICENSE #00936859

**KNUTE BUCKLEW** KBUCKLEW@NGKF.COM  
925.974.0240 | CA RE LICENSE #01332731

**DANNY BARTZ** DBARTZ@NGKF.COM  
925.974.0231 | CA RE LICENSE #01971819

WWW.GROWERS-SQUARE.COM



THE DISTRIBUTOR OF THIS COMMUNICATION IS PERFORMING ACTS FOR WHICH A REAL ESTATE LICENSE IS REQUIRED. THE INFORMATION CONTAINED HEREIN HAS BEEN OBTAINED FROM SOURCES DEEMED RELIABLE BUT HAS NOT BEEN VERIFIED AND NO GUARANTEE, WARRANTY OR REPRESENTATION, EITHER EXPRESS OR IMPLIED, IS MADE WITH RESPECT TO SUCH INFORMATION. TERMS OF SALE OR LEASE AND AVAILABILITY ARE SUBJECT TO CHANGE OR WITHDRAWAL WITHOUT NOTICE.



# GROWERS square

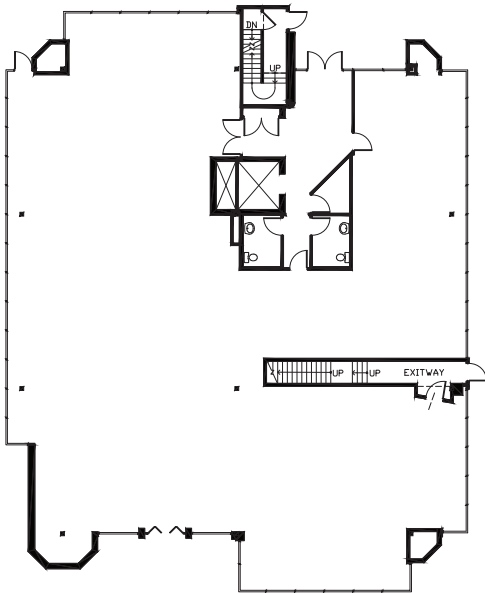
THE HEART OF WALNUT CREEK

FULL BUILDING OPPORTUNITY

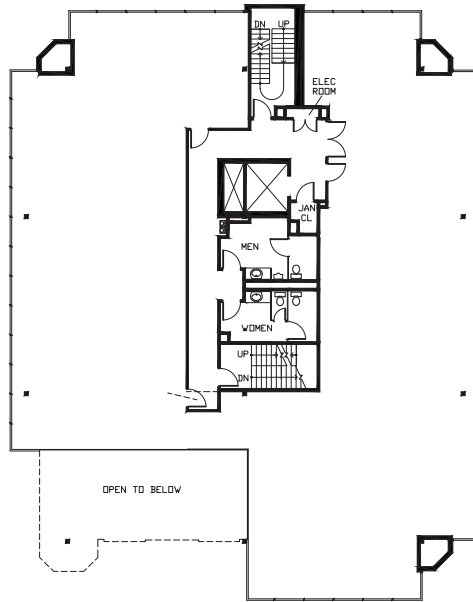


## FLOOR PLANS

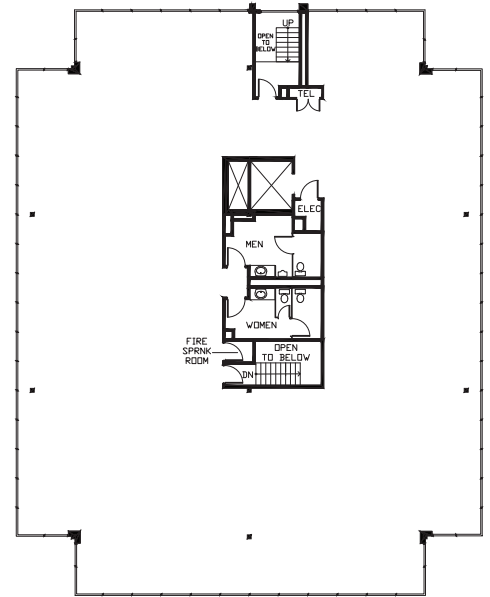
### 1656 N. CALIFORNIA BLVD



FLOOR 1



FLOOR 2



FLOOR 3

FOR MORE INFORMATION  
PLEASE CONTACT

BRECK LUTZ BLUTZ@NGKF.COM  
925.974.0109 | CA RE LICENSE #00936859

KNUTE BUCKLEW KBUCKLEW@NGKF.COM  
925.974.0240 | CA RE LICENSE #01332731

DANNY BARTZ DBARTZ@NGKF.COM  
925.974.0231 | CA RE LICENSE #01971819

WWW.GROWERS-SQUARE.COM



THE DISTRIBUTOR OF THIS COMMUNICATION IS PERFORMING ACTS FOR WHICH A REAL ESTATE LICENSE IS REQUIRED. THE INFORMATION CONTAINED HEREIN HAS BEEN OBTAINED FROM SOURCES DEEMED RELIABLE BUT HAS NOT BEEN VERIFIED AND NO GUARANTEE, WARRANTY OR REPRESENTATION, EITHER EXPRESS OR IMPLIED, IS MADE WITH RESPECT TO SUCH INFORMATION. TERMS OF SALE OR LEASE AND AVAILABILITY ARE SUBJECT TO CHANGE OR WITHDRAWAL WITHOUT NOTICE.

