

FOR LEASE

# ONE TRIAD CENTER

7736 MCCLOUD RD

CENTREPORT OFFICE PARK :: GREENSBORO, NC



## PROPERTY OVERVIEW

### CLASS A OFFICE BUILDING | 74,525 SF

Three story office building located in CentrePort Office Park. The park includes a variety of functional office suites in varying sizes/configurations, on-site fitness center, conference/training rooms, rotating food trucks, handsomely landscaped grounds and numerous amenities within close proximity.

- + Total Available SF: 13,582 SF
- Suite 110: 13,582 SF (will subdivide)



## CONTACT US

### DODSON SCHENCK, SIOR

Managing Director  
+1 336 478 0234  
dodson.schenck@cbre-triad.com

### GREG WILSON, SIOR

Executive Vice President  
+1 336 331 9399  
greg.wilson@cbre-triad.com

### MATT KING

Vice President  
+1 336 544 2724  
matt.king@cbre-triad.com

[www.cbre.us/CentreportOfficePark](http://www.cbre.us/CentreportOfficePark)

**CBRE** | Triad  
Part of the CBRE affiliate network

FOR LEASE

# ONE TRIAD CENTER

CENTREPORT BUSINESS PARK :: GREENSBORO, NC

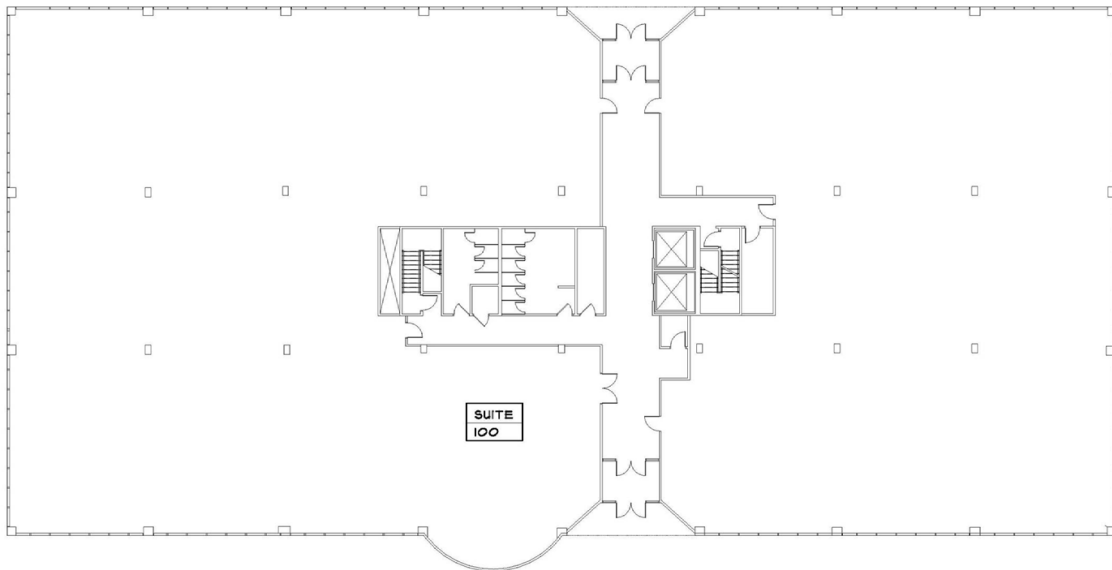


## BUILDING OVERVIEW

- + Year Built: 1985
- + Zoning: CP
- + Close Proximity to PTI Airport
- + Hotels, Restaurants & Retail Shopping Nearby
- + Easy Access to I-40, US-421, I-73, Highway 68 and Wendover Ave



## FLOOR PLANS | TYPICAL FLOOR PLAN



© 2017 CB Richard Ellis-Raleigh LLC, a Delaware limited liability company. The information contained in this document has been obtained from sources believed reliable. While CBRE, Inc. does not doubt its accuracy, CBRE, Inc. has not verified it and makes no guarantee, warranty or representation about it. It is your responsibility to independently confirm its accuracy and completeness. Any projections, opinions, assumptions or estimates used are for example only and do not represent the current or future performance of the property. The value of this transaction to you depends on tax and other factors which should be evaluated by your tax, financial and legal advisors. You and your advisors should conduct a careful, independent investigation of the property to determine to your satisfaction the suitability of the property for your needs. Photos herein are the property of their respective owners and use of these images without the express written consent of the owner is prohibited.

[www.cbre.us/CentreportOfficePark](http://www.cbre.us/CentreportOfficePark)

**CBRE** | Triad  
Part of the CBRE affiliate network

FOR LEASE

# ONE TRIAD CENTER

CENTREPORT BUSINESS PARK :: GREENSBORO, NC



## AMENITY CENTER



## LOCATION MAP



[www.cbre.us/CentreportOfficePark](http://www.cbre.us/CentreportOfficePark)

**CBRE** | Triad  
Part of the CBRE affiliate network

FOR LEASE

# ONE TRIAD CENTER

CENTREPORT BUSINESS PARK :: GREENSBORO, NC



## LOCATION MAP



© 2017 CB Richard Ellis-Raleigh LLC, a Delaware limited liability company. The information contained in this document has been obtained from sources believed reliable. While CBRE, Inc. does not doubt its accuracy, CBRE, Inc. has not verified it and makes no guarantee, warranty or representation about it. It is your responsibility to independently confirm its accuracy and completeness. Any projections, opinions, assumptions or estimates used are for example only and do not represent the current or future performance of the property. The value of this transaction to you depends on tax and other factors which should be evaluated by your tax, financial and legal advisors. You and your advisors should conduct a careful, independent investigation of the property to determine to your satisfaction the suitability of the property for your needs. Photos herein are the property of their respective owners and use of these images without the express written consent of the owner is prohibited.

[www.cbre.us/CentreportOfficePark](http://www.cbre.us/CentreportOfficePark)

**CBRE** | Triad  
Part of the CBRE affiliate network