

904 SAN ANTONIO STREET AUSTIN, TEXAS 78701

OFFICE SPACE FOR LEASE

Originally built by E.P. Wilmot and designed by Charles H. Page (Page Brothers) in 1923, 904 San Antonio stands as a piece of Austin's history. The property is the last remaining original home that faces one of the four public squares that was planned and designed by Edwin Waller when he rolled out the Austin grid plan in 1839.

- Complete renovation designed by Clayton & Little Architects
- Great location adjacent to the Travis County Courthouse and historic Wooldridge Square
- Three blocks from W. 6th Street and walking distance to countless amenities
- External signage available
- Single Tenant Opportunity
- Walk Score: 93 / Bike Score: 94



RENTAL RATE Negotiable
NNN \$9.00 PSF
ZONING DMU-CO
SUBMARKET Downtown
PARKING 20 Spaces

LOT SIZE 17,644 SF (0.40 acres)
FIRST FLOOR 3,763 SF
SECOND FLOOR 2,034 SF
BASEMENT 1,982 SF
TOTAL RENTABLE 7,780 SF

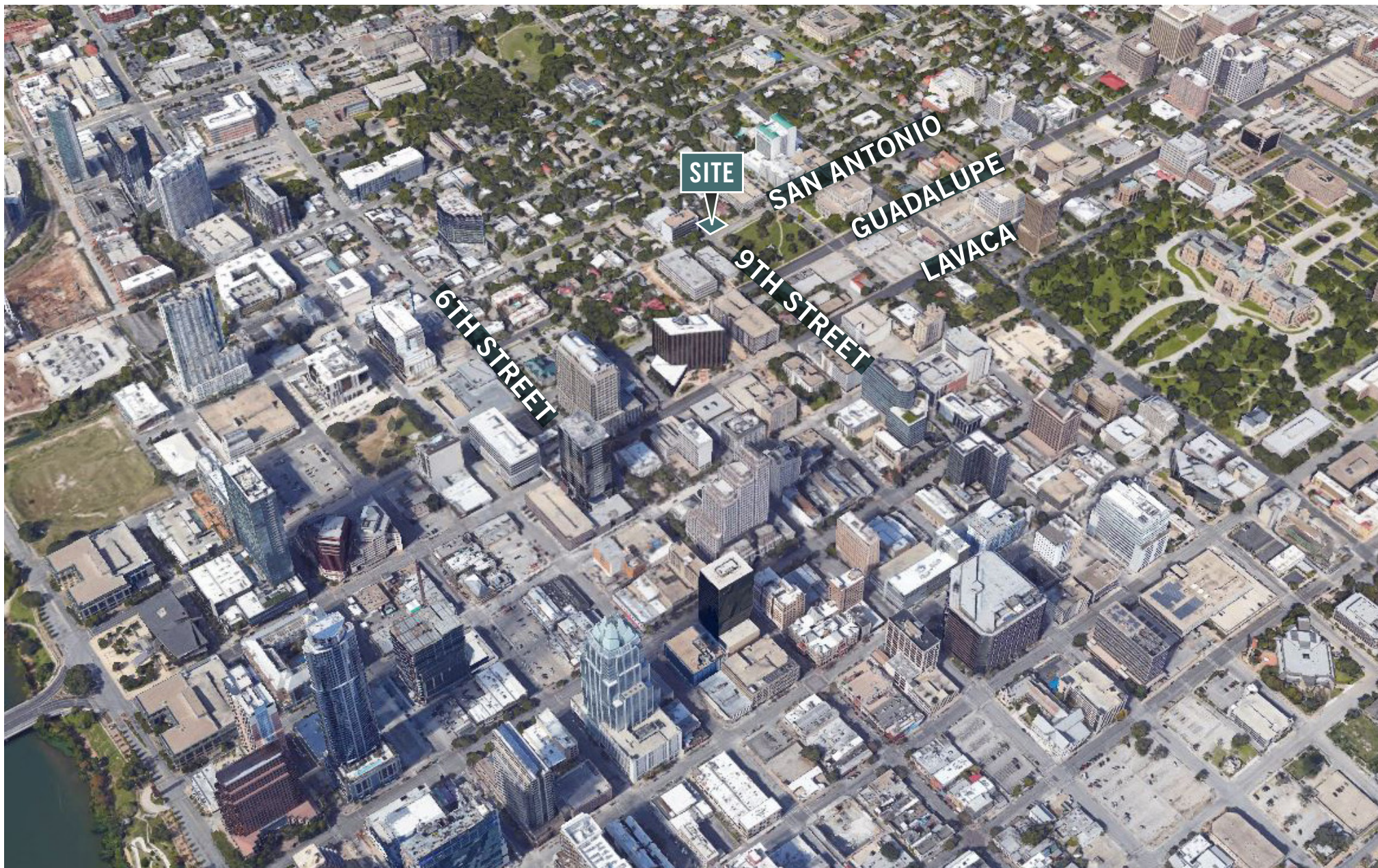
INTERIOR PHOTOGRAPHY

904 SAN ANTONIO



AERIAL

904 SAN ANTONIO



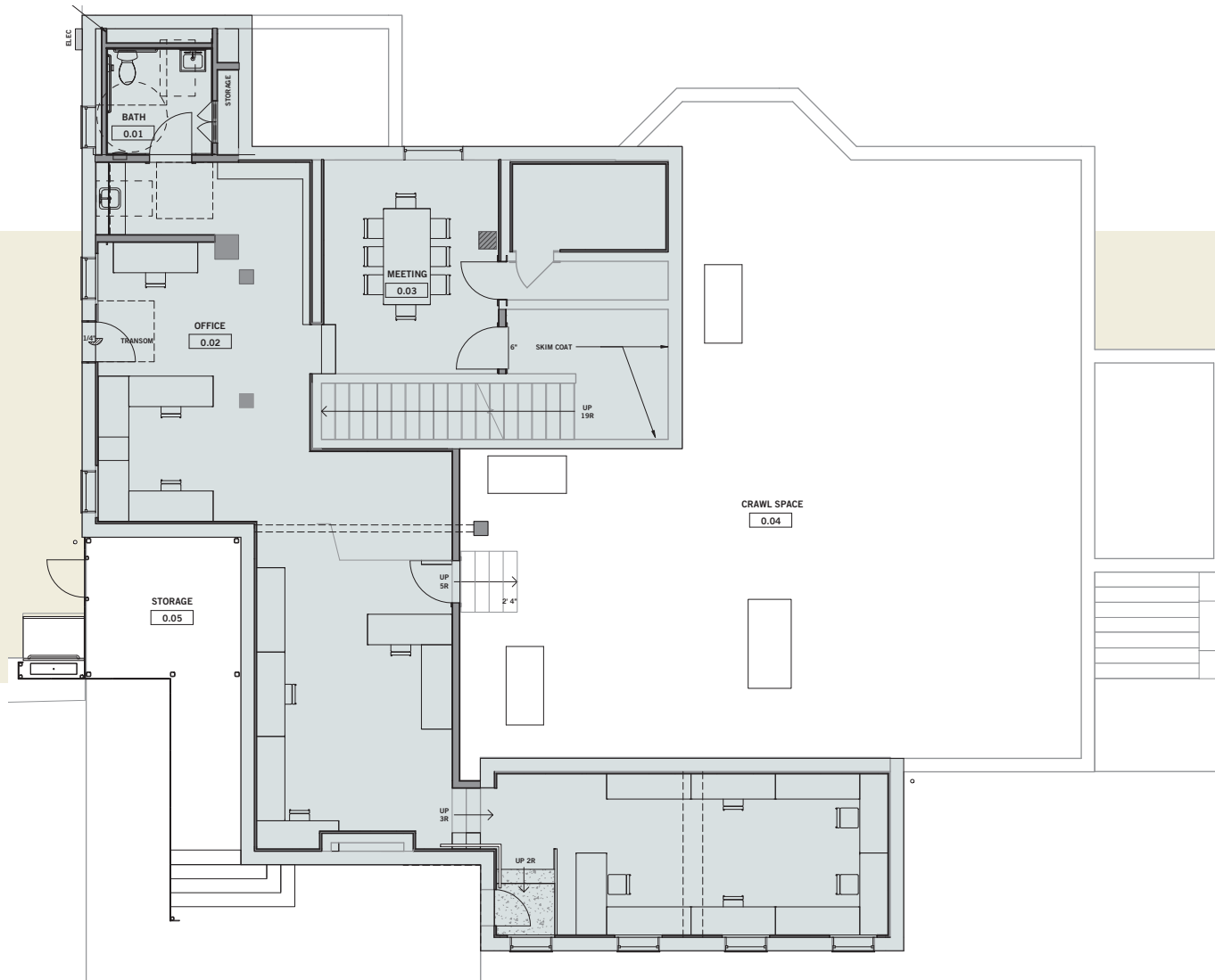
ZOOMED-IN AERIAL

904 SAN ANTONIO



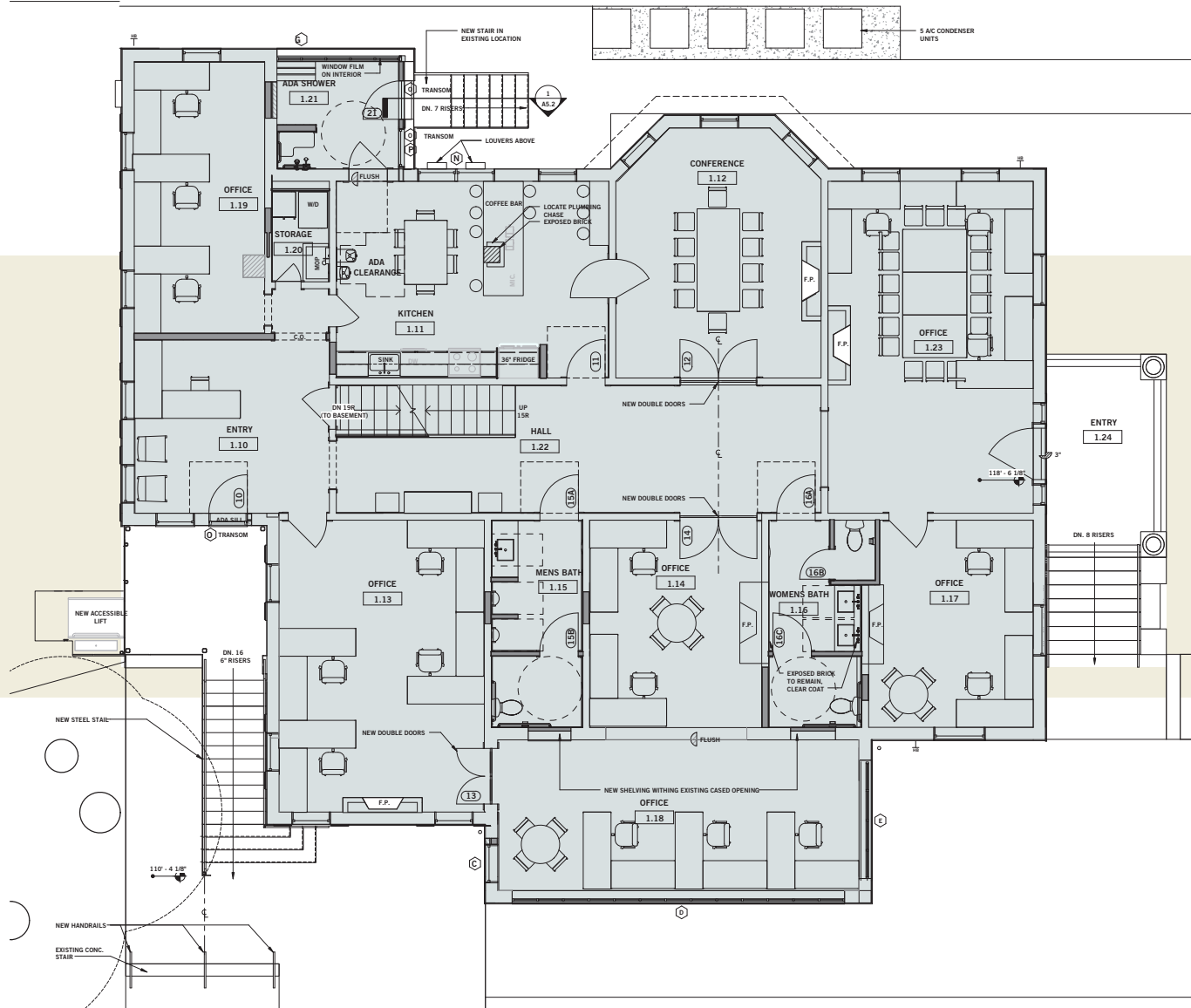
FLOOR PLAN - BASEMENT

904 SAN ANTONIO



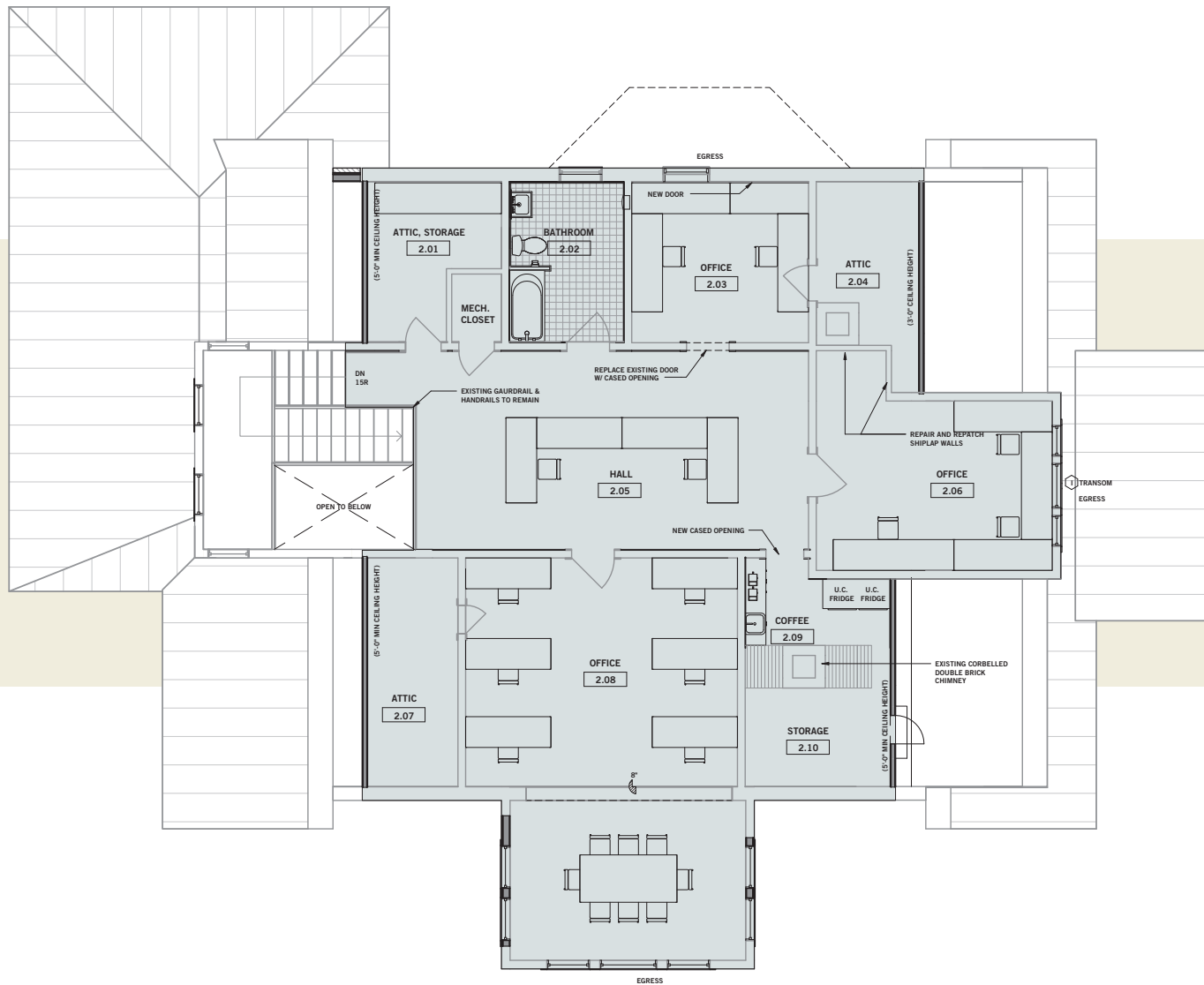
FLOOR PLAN - 1ST FLOOR

904 SAN ANTONIO



FLOOR PLAN - 2ND FLOOR

904 SAN ANTONIO





LEADCOMMERCIAL

LeadCommercial.com

For more information, please contact the leasing team:

Tim Mooney

m. 512-658-4916

tim@leadcommercial.com

Perry Horton

m. 512-415-4565

perry@leadcommercial.com

2007 S. 1st Street, Suite 102

Austin, TX, 78704

t. 512-467-2222



Lead Commercial, LLC - We obtained the information in this package from sources we believe reliable. However, we have not verified its accuracy and make no guarantee, warranty or representation about it. It is submitted subject to the possibility of errors, omissions, change of price, rental or other conditions, or withdrawal without notice. We include projections, opinions, assumptions or estimates for example only, and they may not represent current or future performance of the project. You and your tax and legal advisors should conduct your own investigation of the property.