

PORTAGE SQUARE

4247 PORTAGE ST NW
NORTH CANTON, OH 44720

Jon Caiazza
Senior Advisor
330.309.4766
jon.caiazza@svn.com

Aaron Davis
Associate Advisor
234.231.0200
aaron.davis@svn.com



Property Summary



OFFERING SUMMARY

Available SF: 1,717 SF
1,000-4,000 SF

Lease Rate: \$12.00 SF/yr [NNN]
\$8.00 SF/yr [NNN]

Building Size: 6,000 SF

Market: North Canton

PROPERTY OVERVIEW

The retail space available has great frontage to Portage St. Dead center of plaza.

The lower level space available has direct access from the rear of the center. The space can be built out to your specifications.

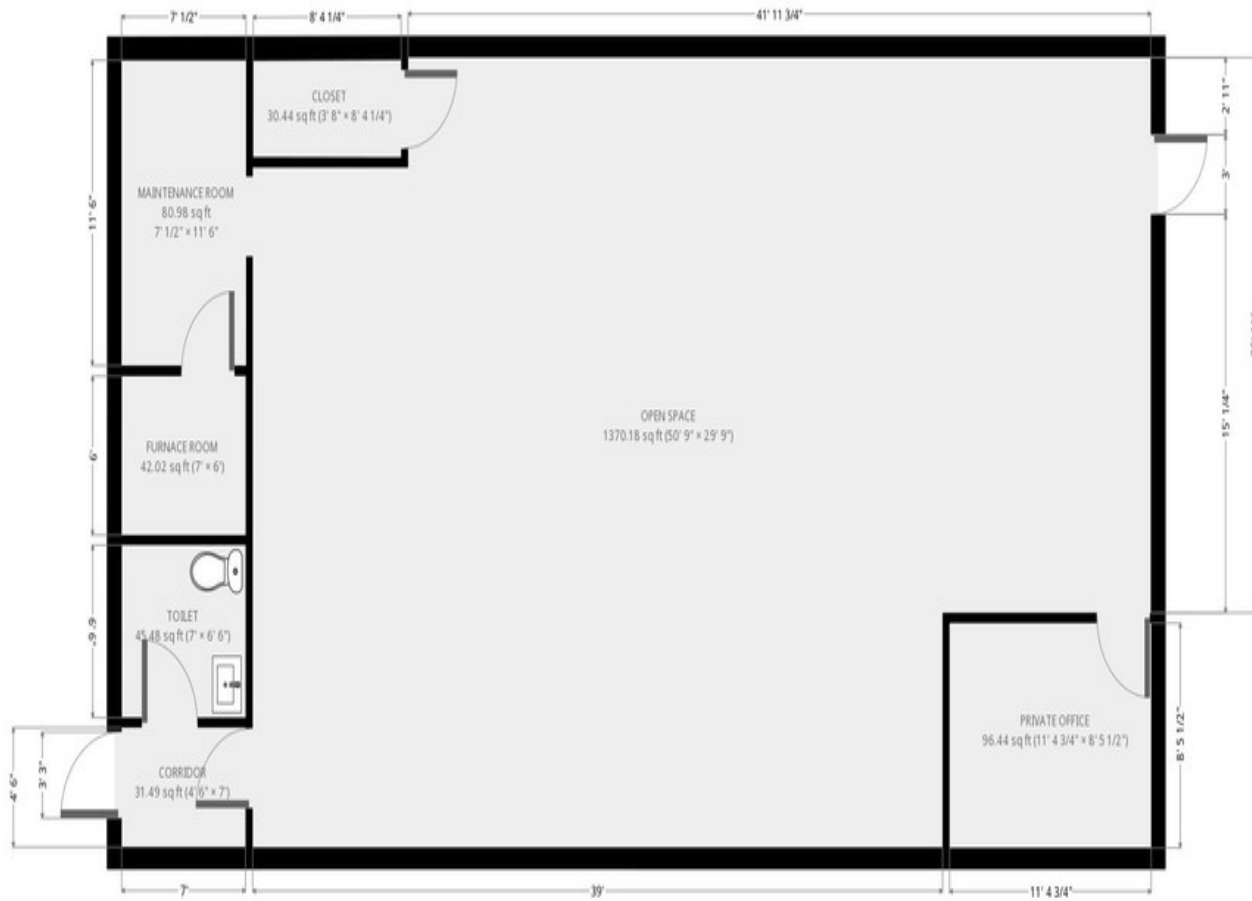
PROPERTY HIGHLIGHTS

- Great traffic counts
- Ground level entrance
- Space to be built out to your specifications

Additional Photos

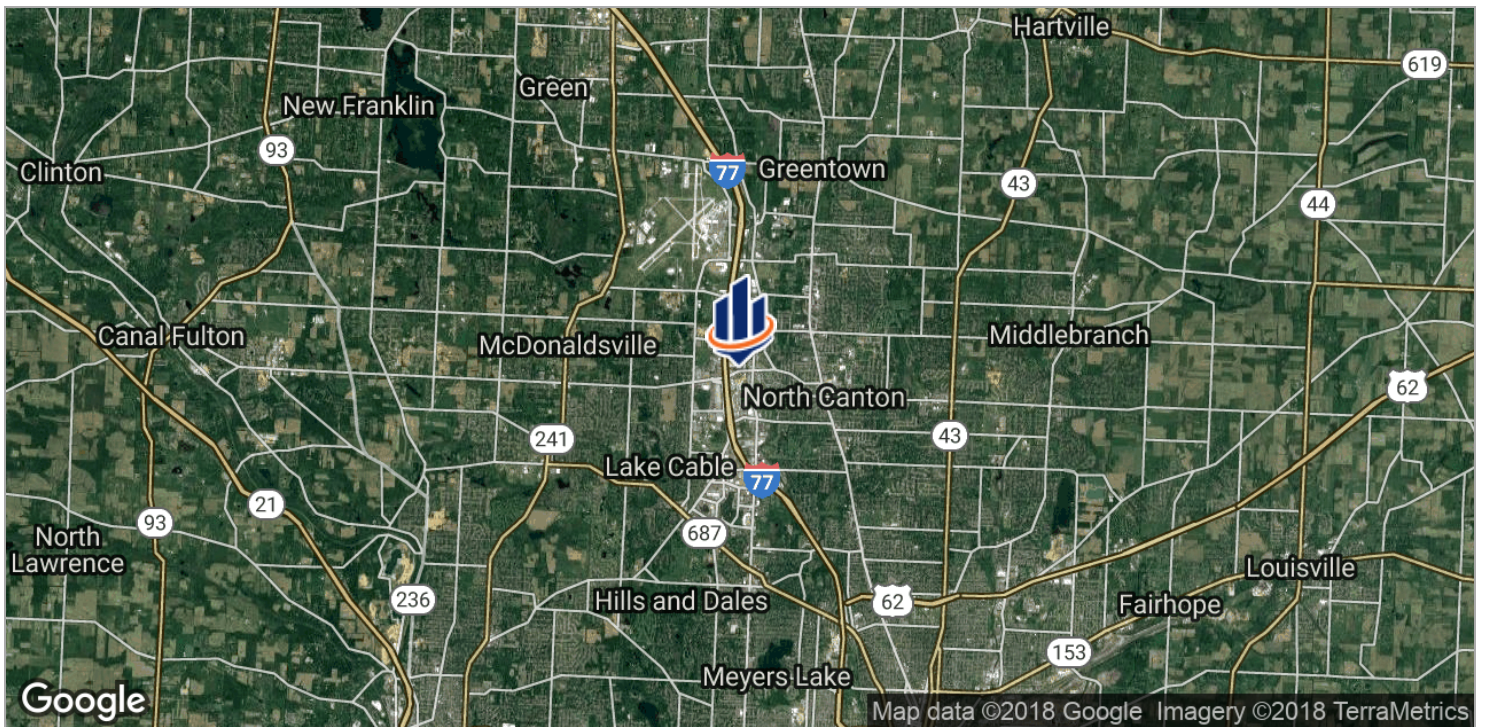
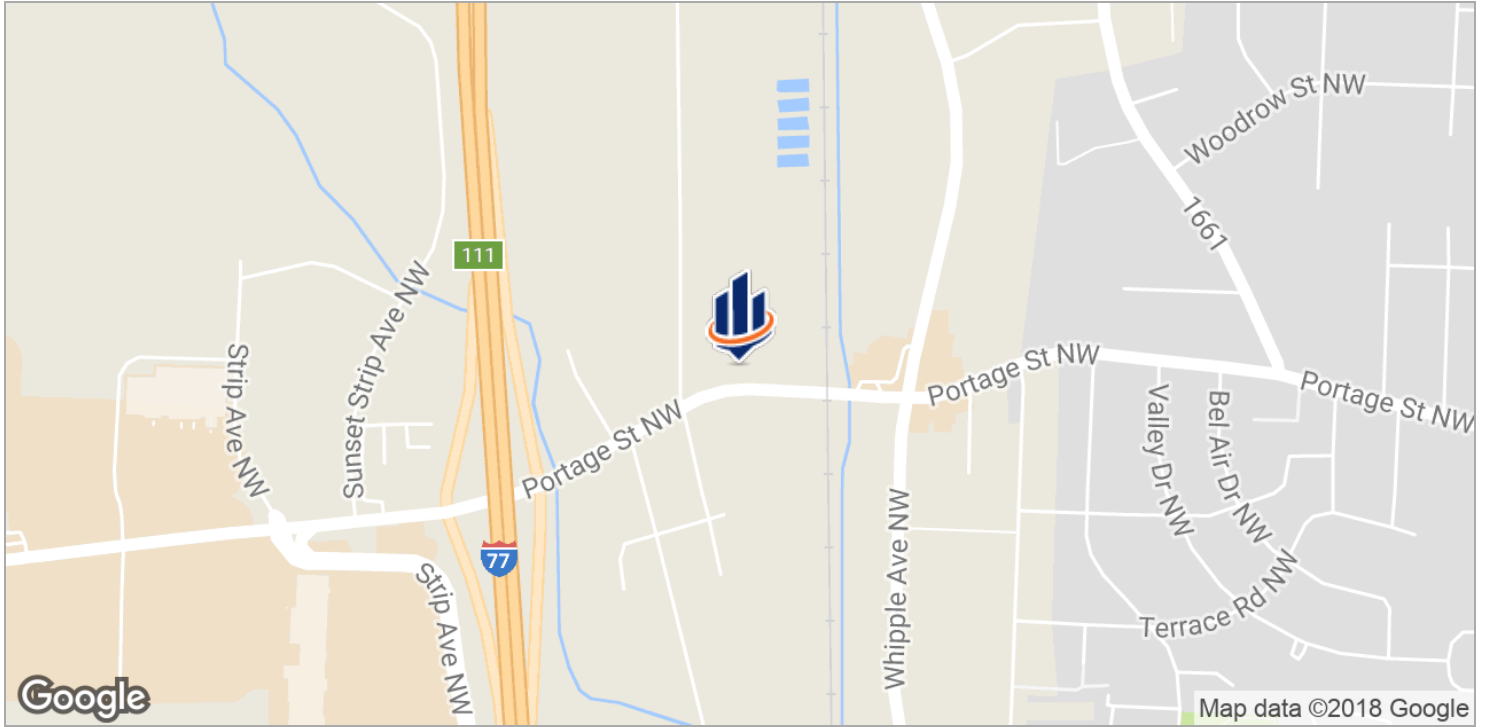


Floor Plans

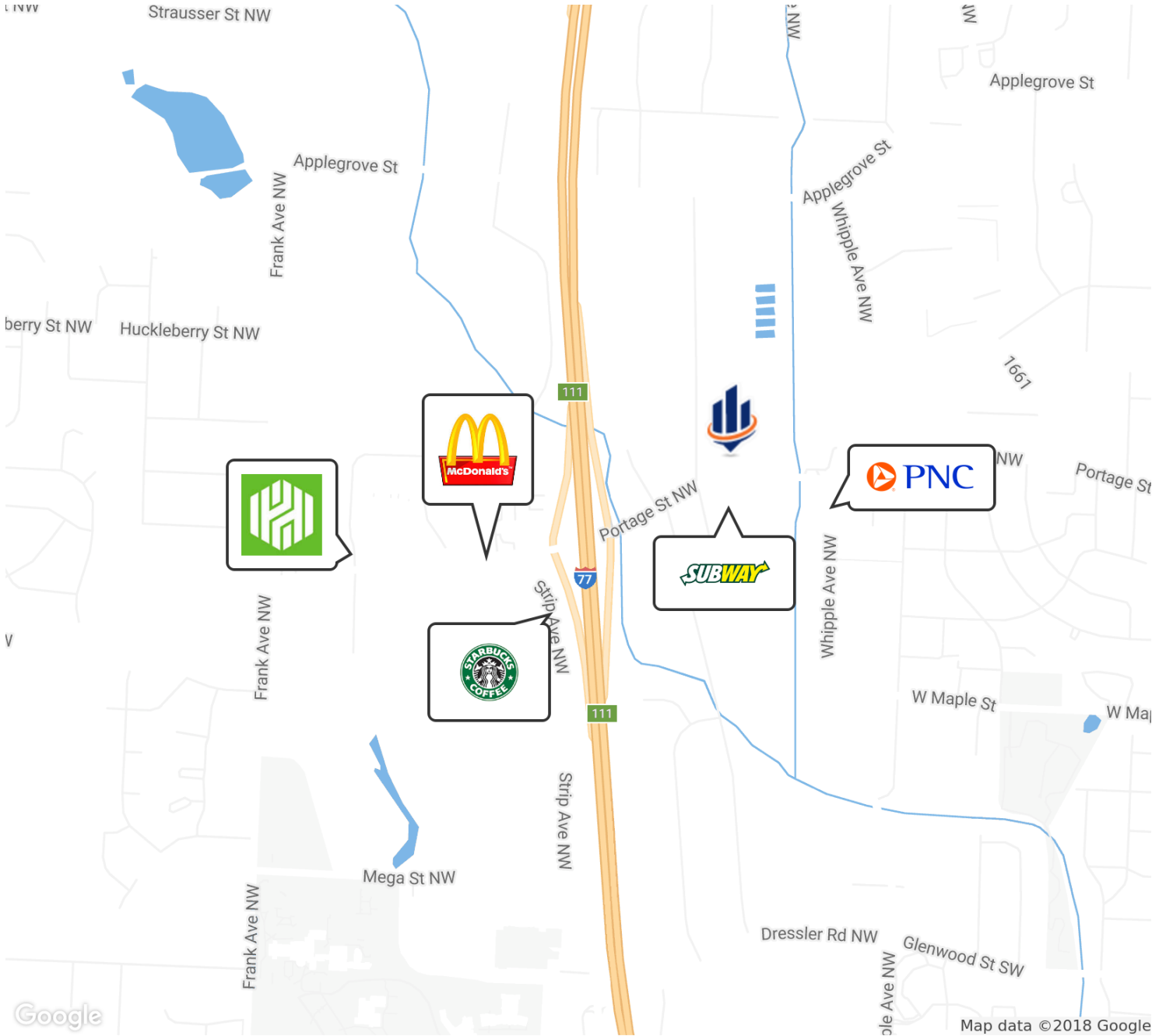


THIS FLOORPLAN IS PROVIDED WITHOUT WARRANTY OF ANY KIND. SENSOPRIA DISCLAIMS ANY WARRANTY INCLUDING, WITHOUT LIMITATION, SATISFACTORY QUALITY OR ACCURACY OF DIMENSIONS.

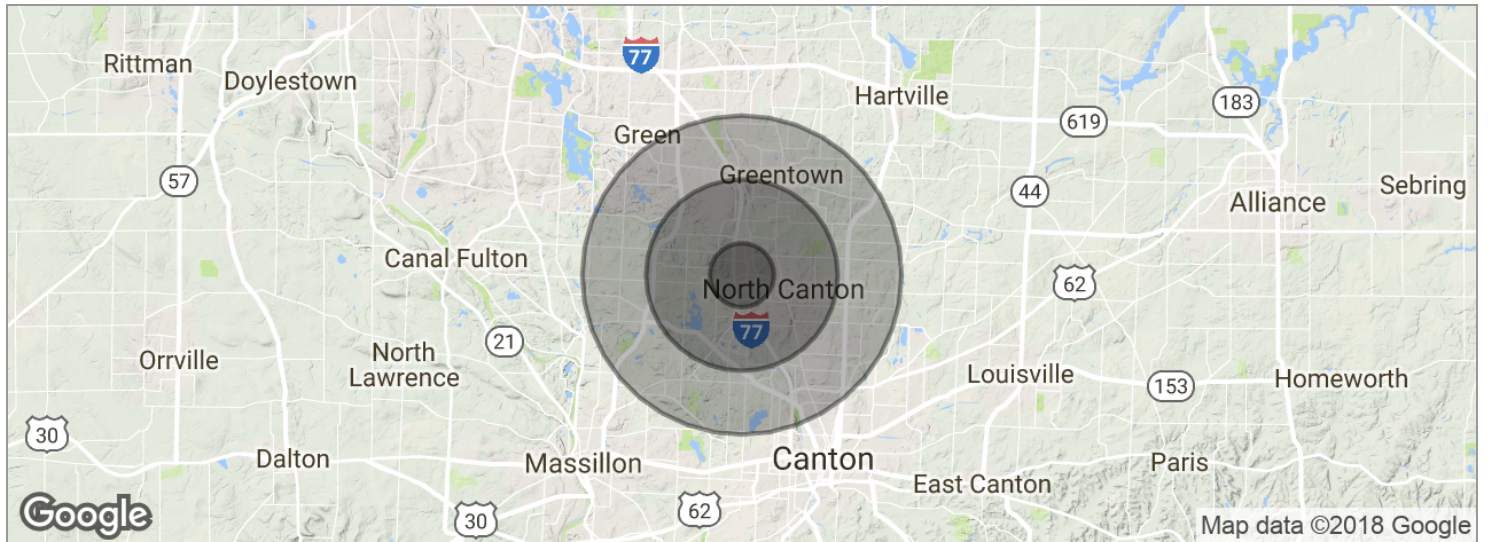
Location Maps



Retailer Map



Demographics Map



POPULATION	1 MILE	3 MILES	5 MILES
Total population	5,784	43,430	115,247
Median age	38.5	40.6	42.4
Median age (male)	36.8	39.0	41.6
Median age (Female)	40.0	42.2	43.4
HOUSEHOLDS & INCOME	1 MILE	3 MILES	5 MILES
Total households	2,569	18,393	48,071
# of persons per HH	2.3	2.4	2.4
Average HH income	\$60,006	\$70,127	\$73,975
Average house value	\$149,348	\$196,545	\$194,706

* Demographic data derived from 2010 US Census