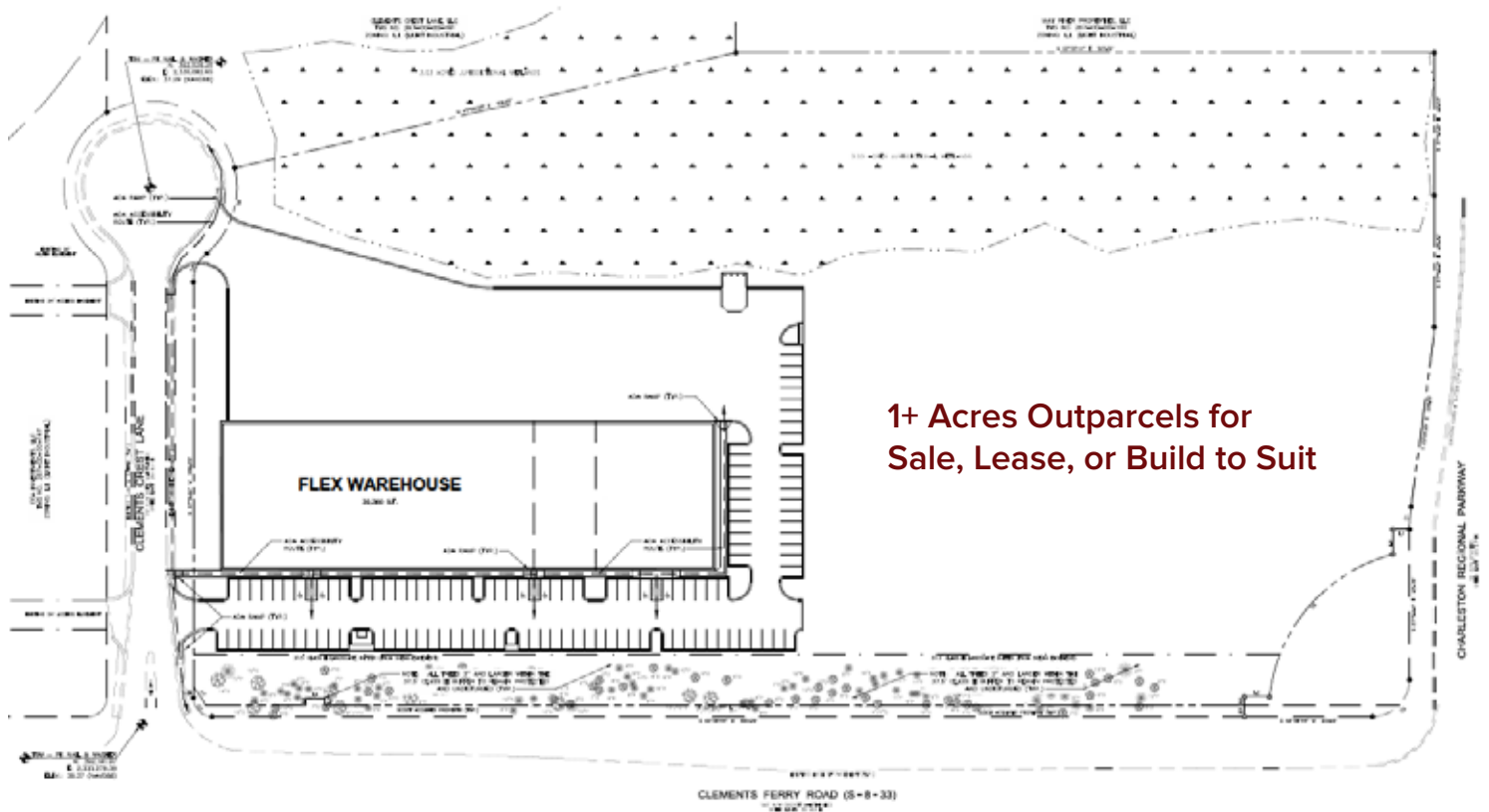


## Clement's Crest Park

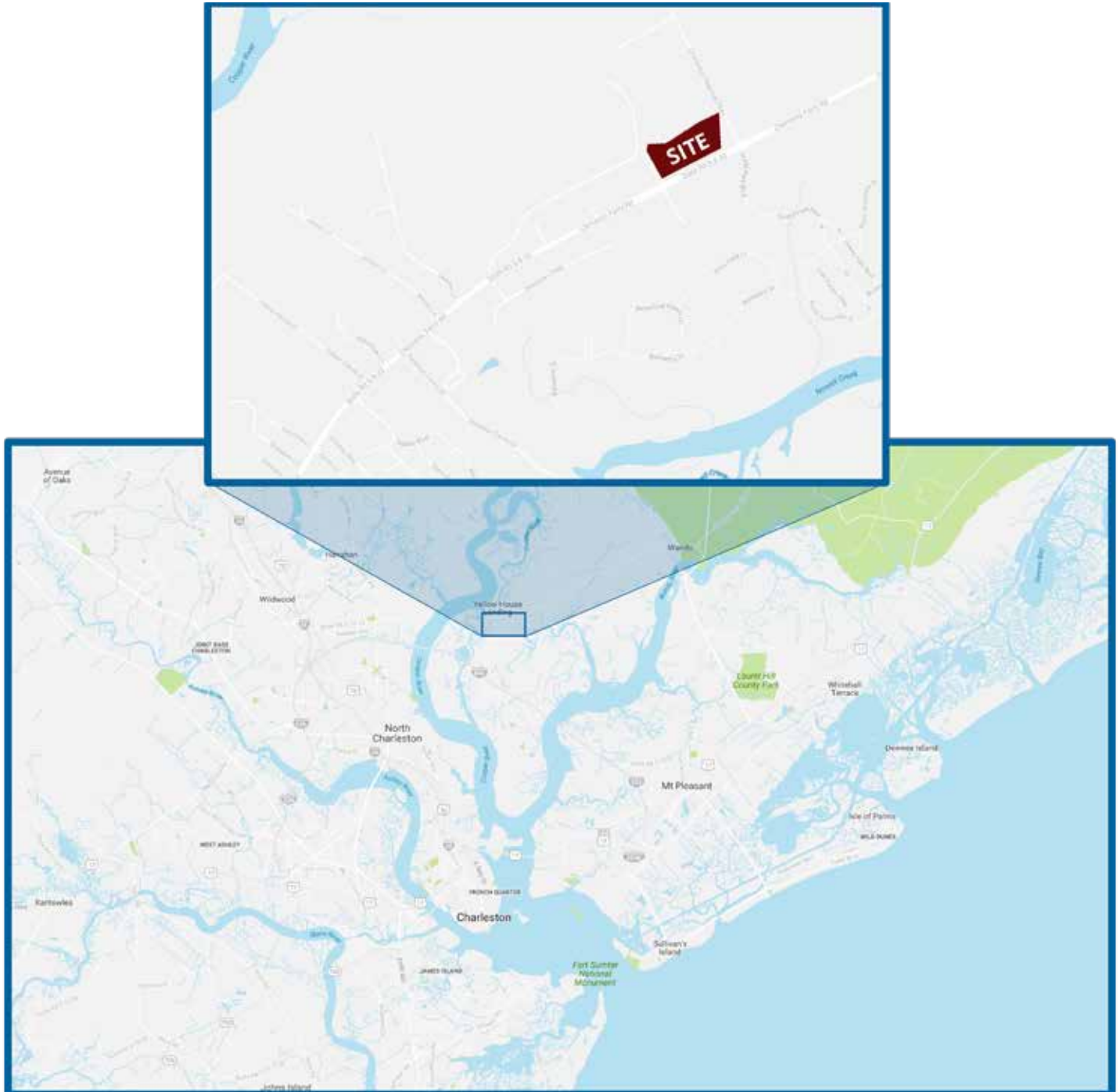
1008 Clements Crest Lane, Charleston, SC



## Clement's Crest Park Location:



## Clement's Crest Park Location:



## Clement's Crest Park

### Project Overview:

Amplify is proud to present Clements Crest Park (CCP), an 8.2 acre site located in the growing Clements Ferry corridor and a part of the Charleston Regional Business Center development. The site has excellent access from Clements Crest Lane, over 650' of frontage on Clements Ferry Road, and at full build out the site will offer access to the traffic light at Charleston Regional Business Parkway. Off-site drainage is provided allowing excellent land use efficiency.

Please contact us to discuss build to suit and other site opportunities.

*\*All details subject to change.*

### Project Details:

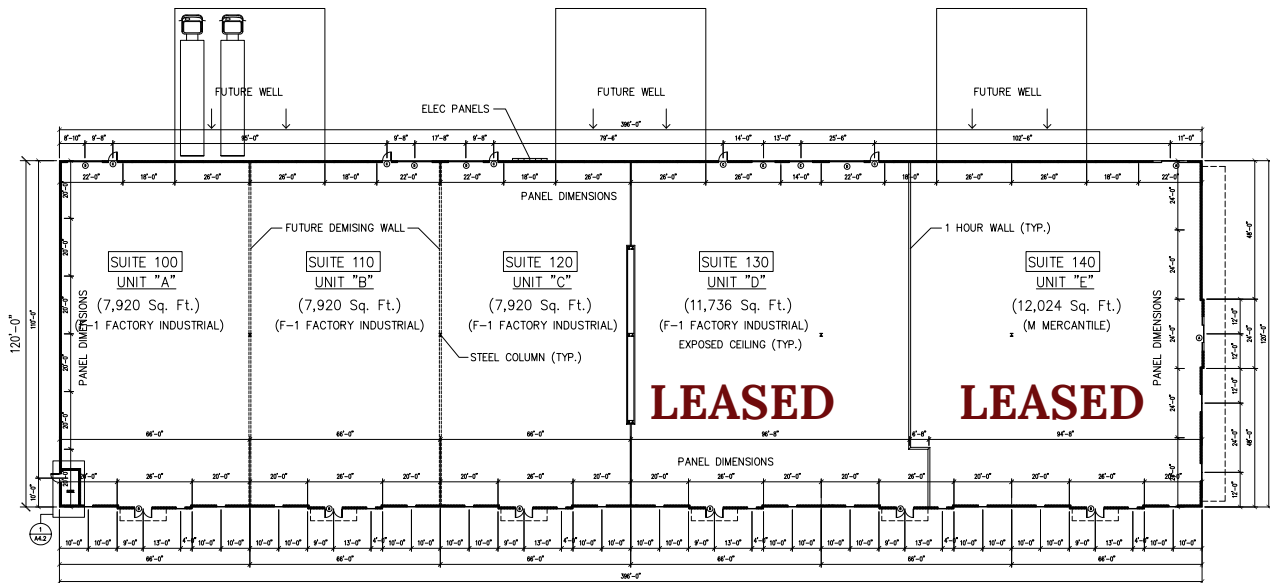
Acres:	8.2
County:	Berkeley
Address:	1008 Clements Crest Lane
TMS:	267-00-00-129
Zoning:	Light Industrial, City of Charleston

### CCP Proposed Flex Building 1:

Total SF:	Up to 60,000
Lease Rate:	\$15.00
Lease Type:	NNN
TI:	Up to \$10.00
Clearance Height:	22'
Construction Type:	Tilt-up
Sprinkler:	LP-46



## Clement's Crest Park Elevations:

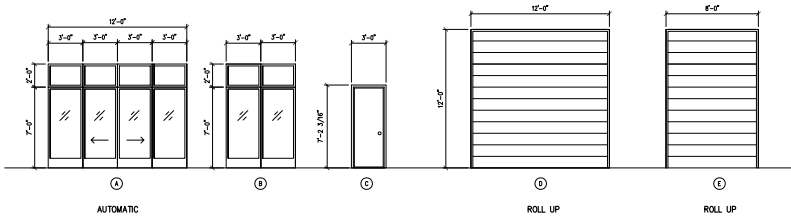


### DOOR SCHEDULE

SCALE: 1/4" = 1'-0"

#### GENERAL NOTES:

INTERIOR DOORS TO BE PANELLED HOLLOW CORE PRE-HUNG

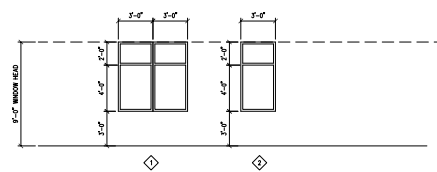


### WINDOW SCHEDULE

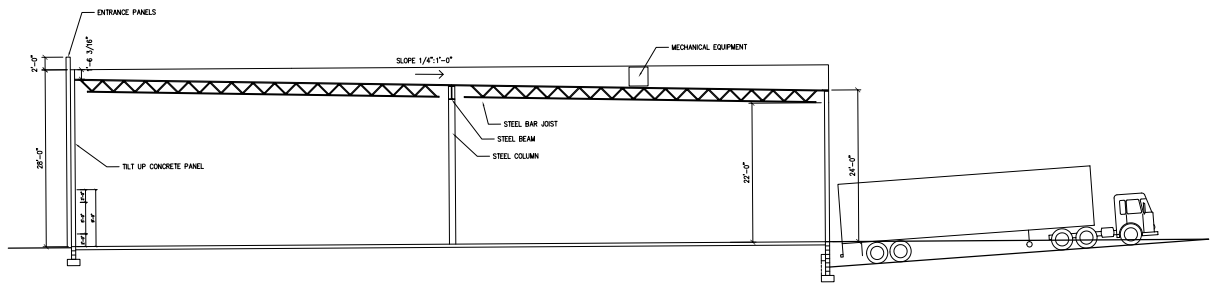
SCALE: 1/4" = 1'-0"

#### GENERAL NOTES:

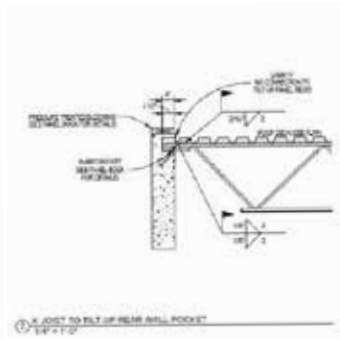
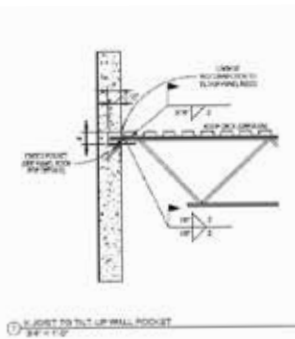
ALL WINDOWS SHALL BE LOW E, 1/2" 1/2" PERFORMANCE GLAZING-CLEAR  
ALL WINDOWS TO MEET 1/2" 1/2" RATING  
ALL WINDOWS AND HEIGHTS ARE NOMINAL  
ALL WINDOWS TO HAVE IMPACT PROTECTED GLAZING



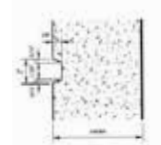
## Clement's Crest Park Elevations:



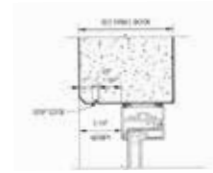
**BUILDING SECTION**  
SCALE: 1/8" = 1'-0"



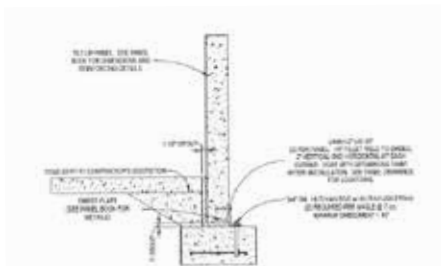
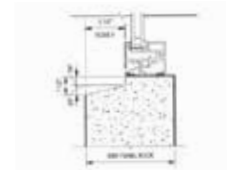
**3 REVEAL DETAIL**  
SCALE: 3" = 1'-0"



**4 HEAD DETAIL**  
SCALE: 3" = 1'-0"



**5 SILL DETAIL**  
SCALE: 3" = 1'-0"



**6 FOOTING DETAIL**  
SCALE: 3/4" = 1'-0"

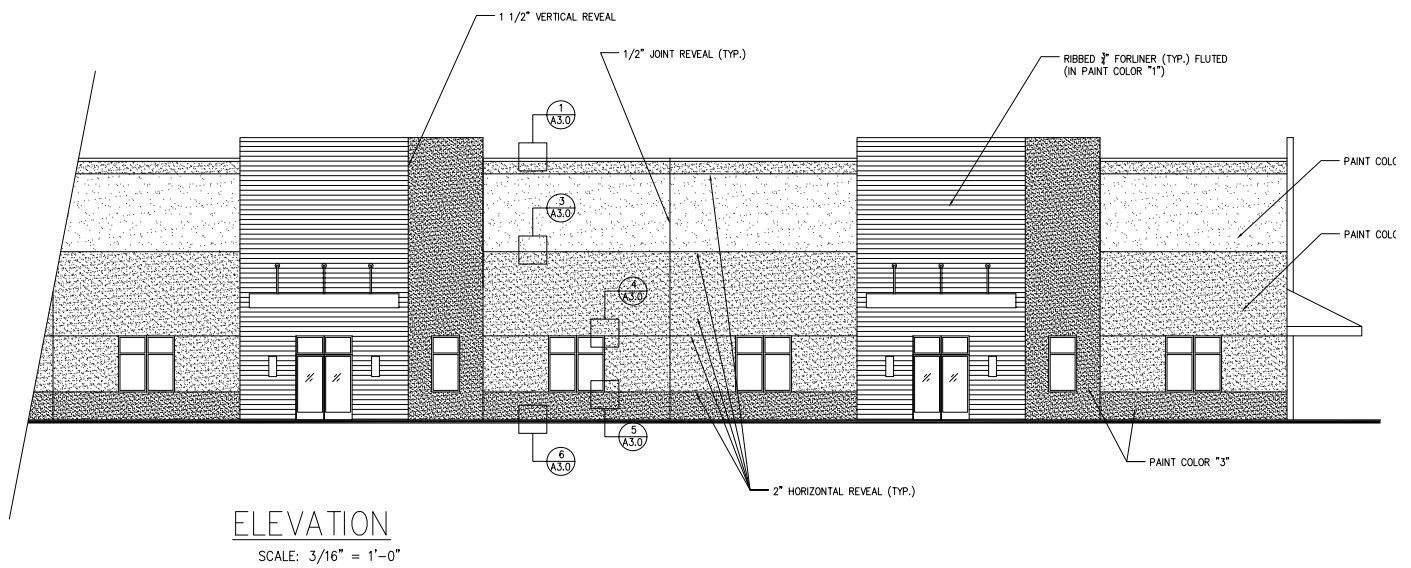


**7 BLOCKING DETAIL**  
SCALE: 3/4" = 1'-0"

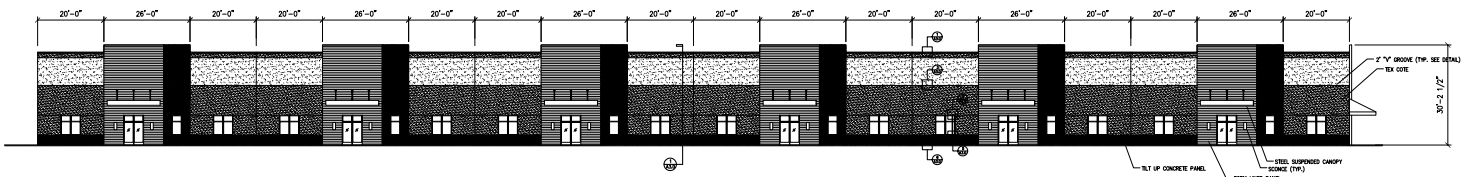


**8 FORM LINER DETAIL**  
SCALE: 1" = 1'-0"

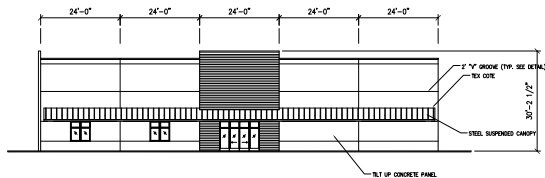
## Clement's Crest Park Elevations:



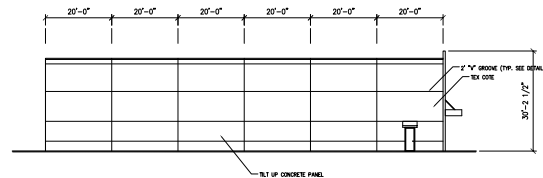
## Clement's Crest Park Elevations:



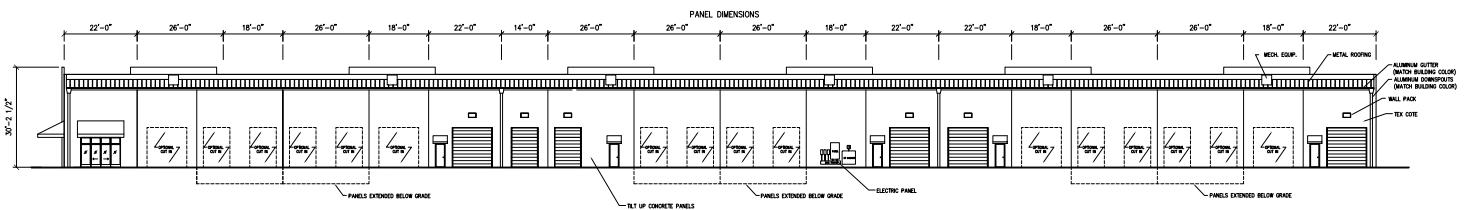
**SOUTH ELEVATION**  
SCALE: 1/8" = 1'-0"



**EAST ELEVATION**  
SCALE: 1/8" = 1'-0"



**WEST ELEVATION**  
SCALE: 1/8" = 1'-0"



**NORTH ELEVATION**  
SCALE: 1/8" = 1'-0"