



The Historic **CLIFT** Building

ESTD. 1919 | SALT LAKE CITY, UT



The Historic Clift Building 10 West Broadway, SLC, UT

Fully Renovated Lobby Now Complete



Building Amenities:

- Building size: 105,000 SF
- 1,374 – 6,894 RSF available
- Lease rate: \$19.00 FS lower level, \$29.00 FS third floor
- Creative spaces with exposed brick & ceilings
- Roof top common area
- Fitness center
- Bike storage
- Locker rooms complete with showers
- On-site restaurants: Barbacoa & Itto Sushi
- Parking located next door or within 1 block
- Convenient TRAX access

Building Renovations & Updates:

- Completely renovated HVAC with state of the art controls
- New electrical services & distribution systems
- New roof
- One of the first historic buildings to use reinforced concrete



National Register of Historic Places in Salt Lake County: National Register #82004139



Recently Improved Tenant Spaces

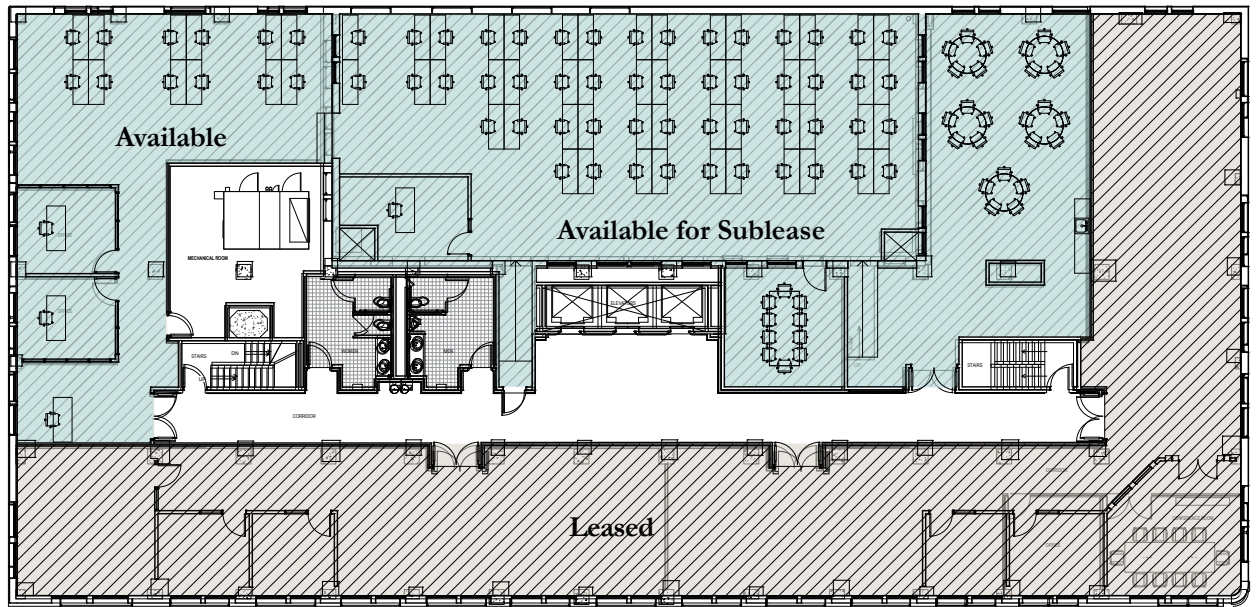


Third Floor

4,858 RSF

2,036 RSF
(Available for Lease)

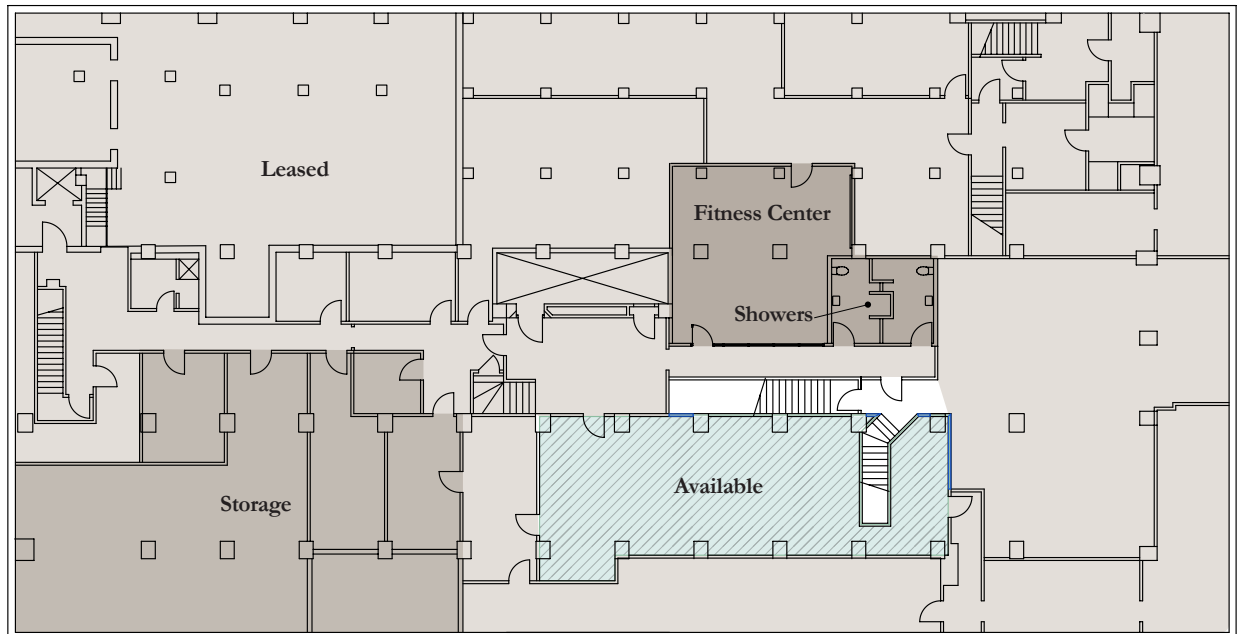
- Proposed floor plan for combined 6,894 RSF



Lower Level

1,374 RSF

- Move in Ready
- One Office
- Conference Room
- Open Area for Cubes
- Kitchen



Location Map



Hotels

1. Radisson
2. Marriott Downtown
3. Carlton
4. Kimpton Hotel
5. Holiday Inn Express
6. Hilton
7. Peery Hotel
8. Fairfield Inn & Suites
9. Courtyard
10. Sheraton
11. Marriott City Center

Restaurants & Nightlife

1. Blue Lemon
2. Ebar
3. Starbucks

4. Texas de Brazil
5. Big Barbecue
6. Subway
7. Farr's Fresh Café
8. Kneaders Bakery & Café
9. Pizza Studio City Creek
10. Sbarro
11. Chick-fil-A
12. McDonald's
13. Roxberry
14. Johnny Rockets
15. The Cheesecake Factory
16. BRIO Tuscan Grille
17. Café Molise
18. BTG Wine Bar
19. Naked Fish Japanese Bistro
20. Beer Hive Pub
21. Michelangelo's On Main
22. Max
23. Blue Iguana

24. Benihana
25. Murphy's Bar & Grill
26. Gandolfo's New York Deli
27. Siegfried's Delicatessen
28. Martine Café
29. Encore Bistro
30. Eva's Bakery
31. Mollie & Ollie
32. Three Pines Coffee
33. Lamb's Grill
34. Bourbon House
35. XpressO
36. Carl's Jr
37. Cancun Café
38. Bar-X
39. Beer Bar
40. Johnny's On Second
41. Red Rock Brewing Co
42. J. Wong's Asian Bistro
43. Christopher's Seafood

44. Lumpy's Downtown
45. P.F. Chang's
46. Olive Garden
47. The Red Door
48. Bambara-SLC
49. Spencer's Steaks & Chops
50. Pier 49 Pizza
51. Ruth's Chris Steak House
52. Lunsford Deli
53. Pleiku
54. Spitz Downtown
55. From Scratch
56. Alamexo
57. Toaster's
58. Cedar of Lebanon
59. Este Pizzeria
60. The Copper Onion
61. The Big O Doughnuts
62. Tabernacle Social Club
63. Valter's Osteria

64. Squatters Pub
65. Gracie's
66. Simply Sushi
67. Moose Lounge
68. Sicilia Pizza & Kitchen
69. Market Street Grill
70. Takashi
71. Roula's Cafe
72. Cheers to You
73. Jimmy Johns
74. Eva
75. Rich's Burgers 'n Grub
76. Whiskey Street
77. Maxwell's East Coast Eatery
78. Twist
79. The Green Pig Pub
80. Pie Hole
81. Himalayan Kitchen
82. Jackalope Lounge
83. Wingers Roadhouse Grill



The Clift Building - 10 West Broadway

Roof Top Patio & Common Area





The Historic
CLIFT
Building
ESTD. 1919 | SALT LAKE CITY, UT

For more information, please contact:

DAVID NIXON
1 801 456 9518
david.nixon@am.jll.com



cliftbuildingslc.com

www.jll.com/slc