

ALDERWOOD BUSINESS CAMPUS



royal commercial Where Great People and Great Spaces Meet

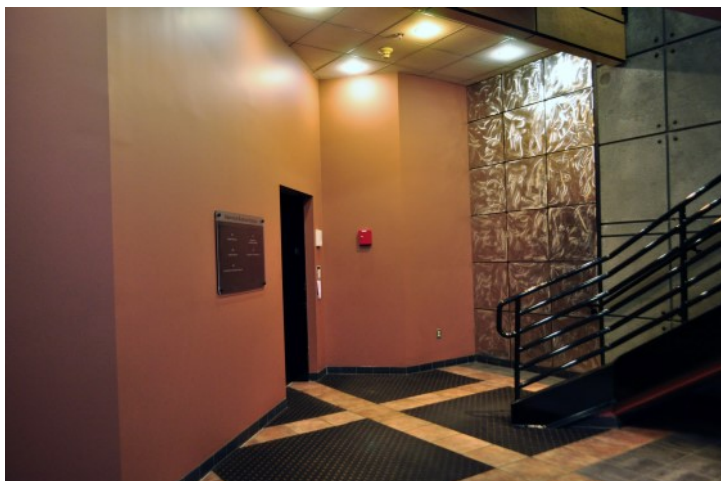


19101—19221 36th Ave W | Lynnwood | Washington 98036

Royal Commercial Corp. | Matthew J. Royal | 425-952-4000



<http://royalcommercialcorp.com/listings/for-lease/office/alderwood-business-campus/>



\$1.86/sqft Full Service Rate

Alderwood Business Campus is conveniently located in the heart of Lynnwood. Many amenities are just blocks away. A premier location for any business. Great mix of professional, flex, and business office use.



<http://royalcommercialcorp.com/listings/for-lease/office/alderwood-business-campus/>

Park Highlights

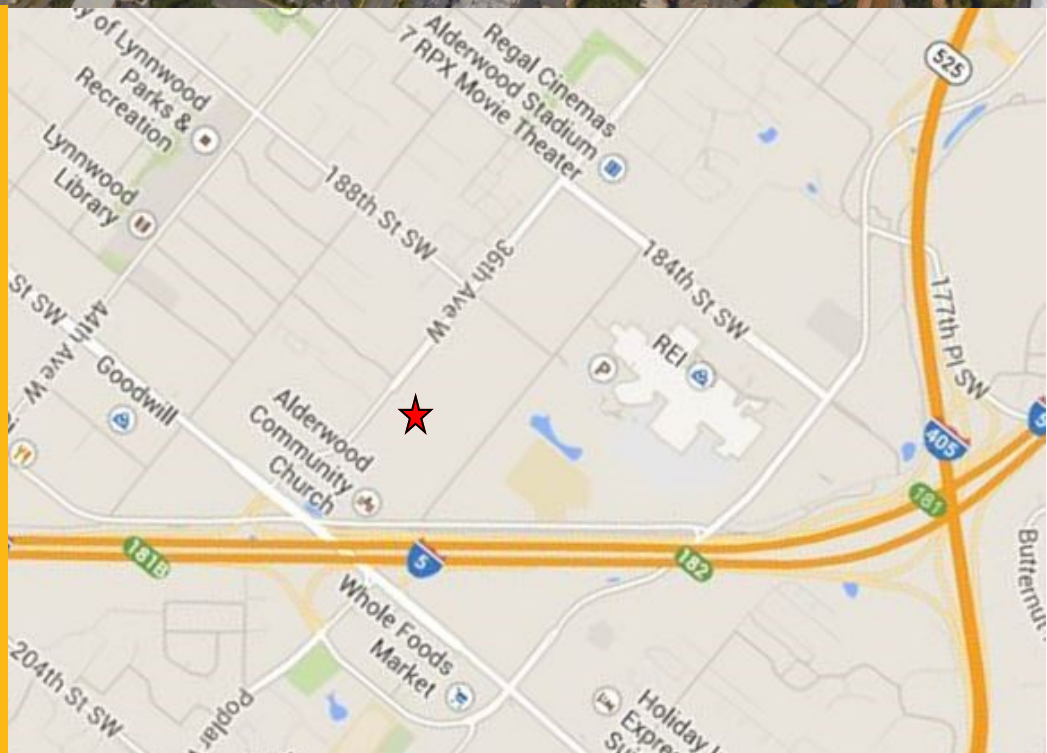
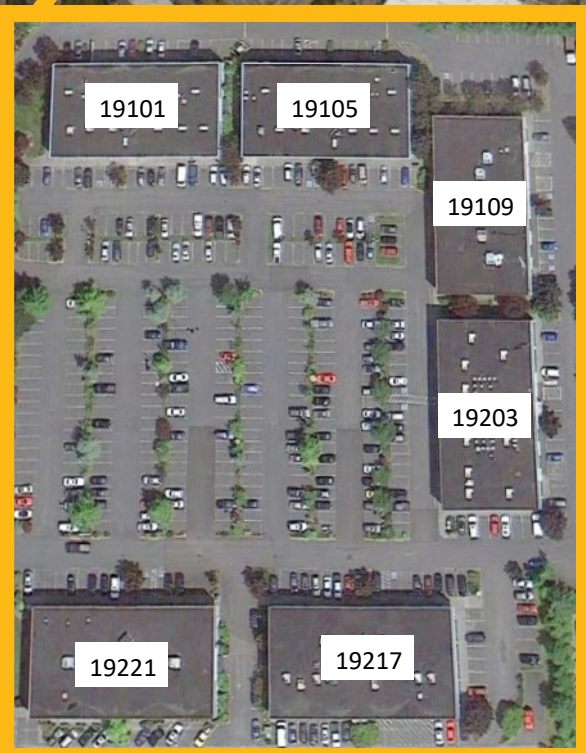
- Six Building Complex totaling approx. 138,665 sqft Office Space
- Great Location; just minutes from the Alderwood Mall and the Lynnwood Convention Center
- Next door to Virginia Mason Medical Center
- Easy and immediate access to major freeways (I-5 & I-405, and SR-525)
- Close proximity to retail and restaurants
- No City B&O taxes; competitive tax structure
- Ample/Free Close-In Parking
- Locally Owned and Managed
- Professionally maintained facility with onsite property maintenance



ALDERWOOD BUSINESS CAMPUS

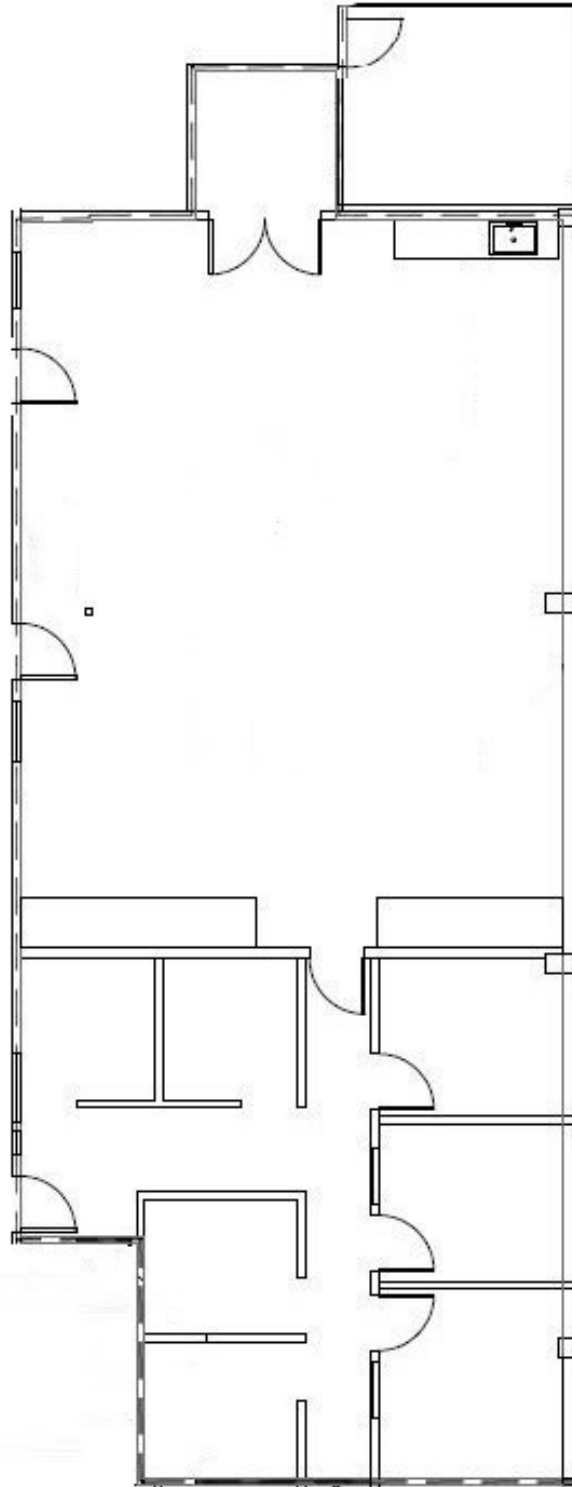


royal commercial Where Great People and Great Spaces Meet



<http://royalcommercialcorp.com/listings/for-lease/office/alderwood-business-campus/>

19101—19221 36th Ave W | Lynnwood | Washington 98036



Building 5

Suite #210

Approx. 2,603 sqft