



FOR SALE

3 COMMERCIALLY ZONED LOTS IN CENTRAL ANDERSON

3260 CENTER STREET, ANDERSON, CA 96007

Map data ©2018 Google Imagery ©2018 , DigitalGlobe, U.S. Geological Survey, USDA Farm

JESSICA WHITLOW, CCIM

Associate

D. 530.221.1127

M. 530.205.5593

jessica@haedrich.com

CA CaIDRE #01941996



WWW.HAEDRICH.COM

FOR SALE

SUMMARY OF FACTS

3260 CENTER STREET | ANDERSON, CA 96007



PROPERTY SUMMARY

Sale Price: \$99,000

Lot Size: 0.94 Acres

APN #: 202-220-003,
202-220-002 or
202-220-020

Zoning: C-1 General
Commercial

Cross Streets: Hayes

PROPERTY OVERVIEW

Just under an acre ready for development.

PROPERTY HIGHLIGHTS

- Easy access off of West Center Street
- Flat and ready to develop
- Impact fee credits may be available

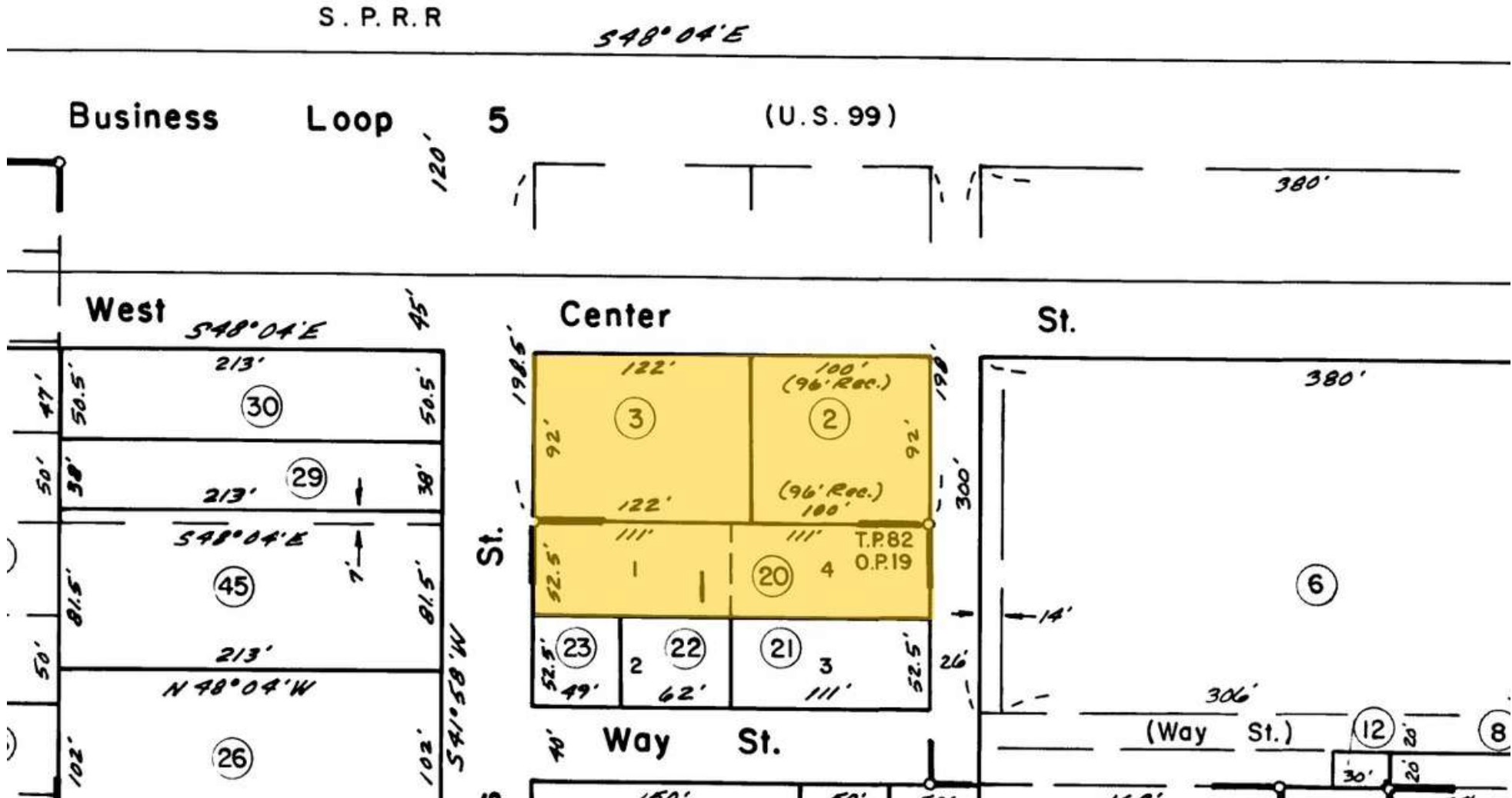
FOR MORE INFORMATION:

JESSICA WHITLOW, CCIM | 530.221.1127 | JESSICA@HAEDRICH.COM | CA CALDRE #01941996 | WWW.HAEDRICH.COM

FOR SALE

PLOT MAP

3260 CENTER STREET | ANDERSON, CA 96007



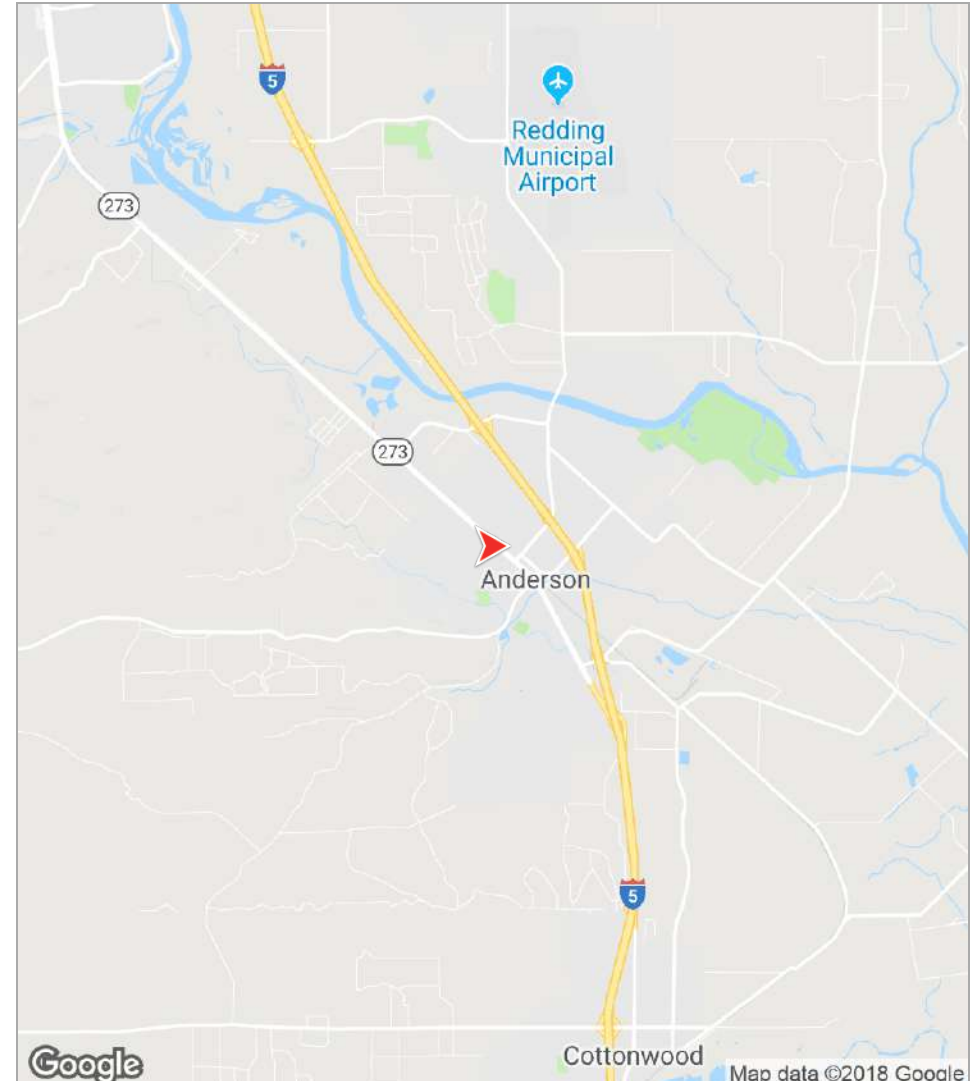
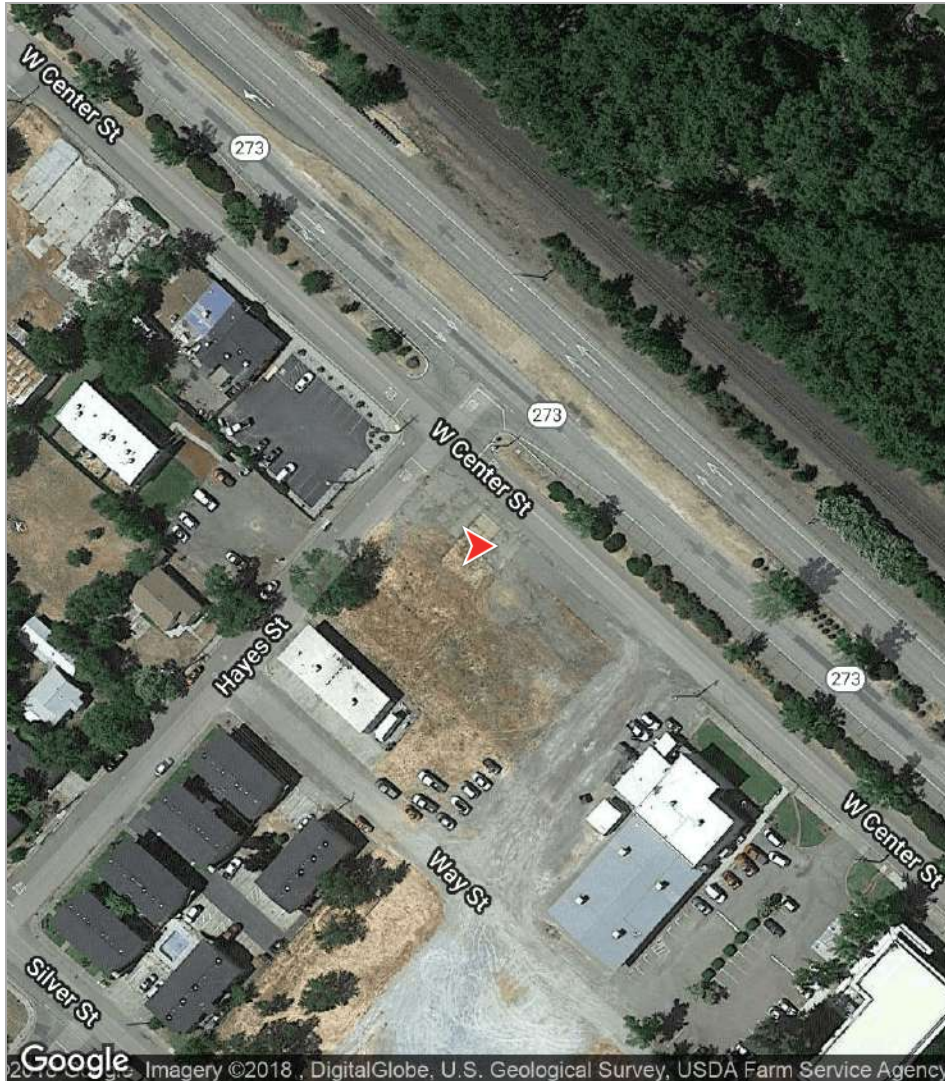
FOR MORE INFORMATION: JESSICA WHITLOW, CCIM | 530.221.1127 | JESSICA@HAEDRICH.COM | CA CALDRE #01941996 | WWW.HAEDRICH.COM

The information above has been obtained from sources believed reliable. While we do not doubt its accuracy we have not verified it and make no guarantee, warranty or representation about it. It is your responsibility to independently confirm its accuracy and completeness.

FOR SALE

LOCATED IN CENTRAL ANDERSON

3260 CENTER STREET | ANDERSON, CA 96007



FOR MORE INFORMATION :

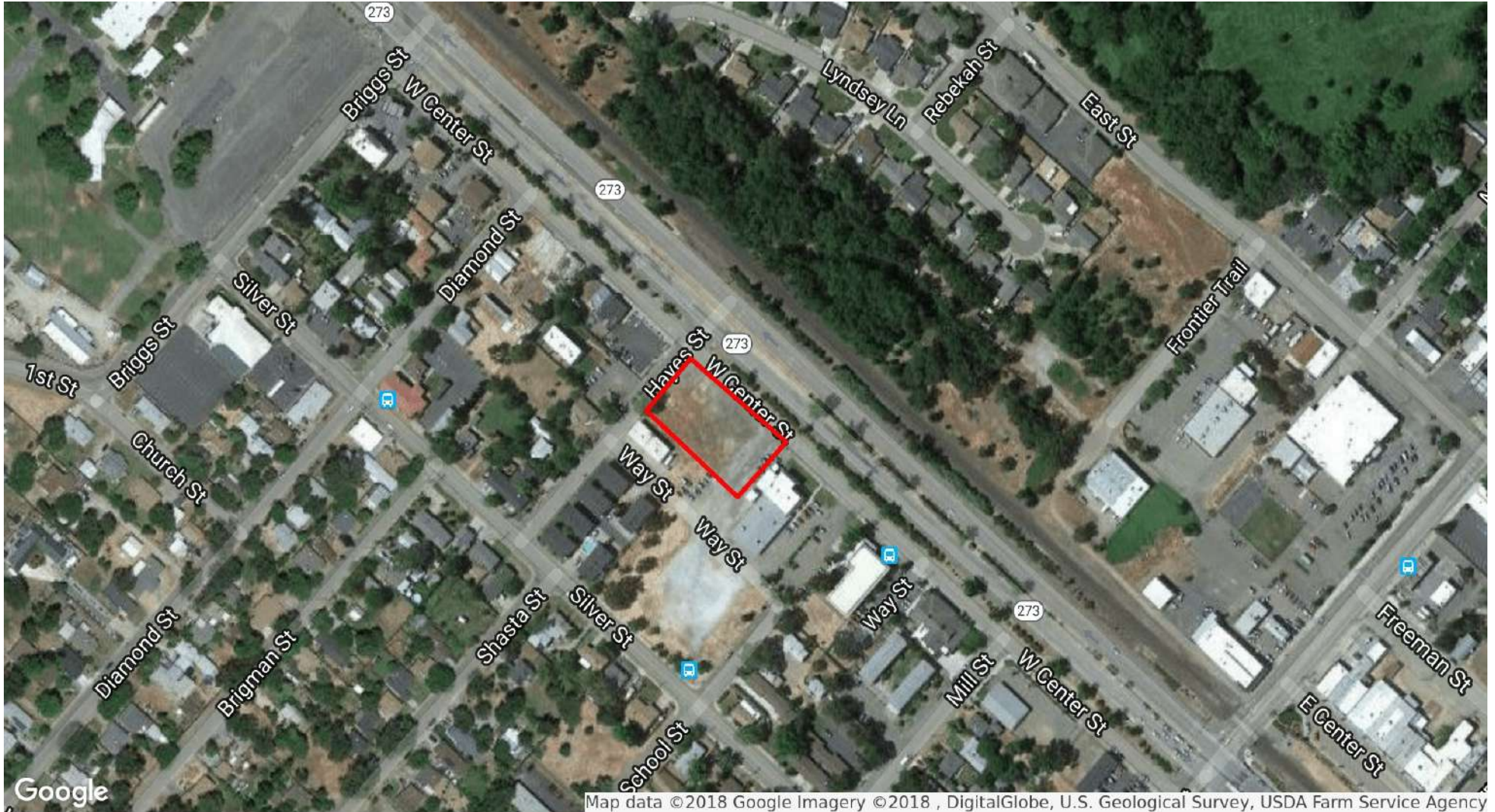
JESSICA WHITLOW, CCIM | 530.221.1127 | JESSICA@HAEDRICH.COM | CA CALDRE #01941996 | WWW.HAEDRICH.COM

The information above has been obtained from sources believed reliable. While we do not doubt its accuracy we have not verified it and make no guarantee, warranty or representation about it. It is your responsibility to independently confirm its accuracy and completeness.

FOR SALE

3 COMMERCIALLY ZONED LOTS IN CENTRAL ANDERSON

3260 CENTER STREET | ANDERSON, CA 96007



Map data ©2018 Google Imagery ©2018 , DigitalGlobe, U.S. Geological Survey, USDA Farm Service Agency

FOR MORE INFORMATION :

JESSICA WHITLOW, CCIM | 530.221.1127 | JESSICA@HAEDRICH.COM | CA CALDRE #01941996 | WWW.HAEDRICH.COM

The information above has been obtained from sources believed reliable. While we do not doubt its accuracy we have not verified it and make no guarantee, warranty or representation about it. It is your responsibility to independently confirm its accuracy and completeness.



Acquisitions Leasing Consulting

Haedrich & Co., Inc. is a full-service commercial real estate firm established in 1985. As our primary mission, the firm seeks to professionally serve its clients in making well-educated decisions concerning the use, management, and operation, acquisition or disposition of commercial real estate. Members of our team are affiliated with The Appraisal Institute, International Council of Shopping Centers (ICSC), and Certified Commercial Investment Member (CCIM).

"We build our success on yours..."