



FOR LEASE

# WARREN CORPORATE CENTER

100 – 500 Warren Corporate Center Drive  
Warren, New Jersey



PREMIUM HEADQUARTERS CAMPUS

## DESCRIPTION

- Five building, institutional quality, Class A headquarters office campus located off the four-way interchange of Exit 36 on Interstate 78.
- Flexible and efficient floor plates with a central core design.
- Timeless design, originally constructed as a corporate headquarters facility.
- Three (3) full service cafeterias, two (2) full service fitness centers, conference center, outdoor sports courts, walking trails and a richly landscaped pond with amphitheater seating.
- State of the art building infrastructure:
  - Excess HVAC capacity system (150% of typical competitive buildings)
  - Emergency generator capacity, full redundancy for each building
  - Electrical power and telecommunications (N+1)
- Multi-story parking decks for each office building at a ratio of 4 spaces per 1,000 SF.
- 25 minute drive to Newark Liberty International Airport.
- 10 minute drive to I-287/78 interchange and 12 minute drive to I-78/24 interchange.



### BUILDING DESCRIPTION\*

100 WARREN CORPORATE CENTER DRIVE (A)	157,546 SF
200 WARREN CORPORATE CENTER DRIVE (B)	157,546 SF
300 WARREN CORPORATE CENTER DRIVE (C)	157,546 SF
400 WARREN CORPORATE CENTER DRIVE (D)	174,914 SF
500 WARREN CORPORATE CENTER DRIVE (E)	174,914 SF
<b>TOTAL SQUARE FEET</b>	<b>822,466 SF</b>

For more information, visit:

[www.warrencorporatecenter.com](http://www.warrencorporatecenter.com)

or

<https://vimeo.com/212094097>

\* Please note: Building addresses have changed.

For more information, contact:

**Robert Donnelly**  
Executive Vice Chairman  
973.292.4606  
[Robert.Donnelly@cushwake.com](mailto:Robert.Donnelly@cushwake.com)

**Robert Donnelly, Jr., CCIM**  
Executive Managing Director  
973.292.4621  
[Robert.DonnellyJr@cushwake.com](mailto:Robert.DonnellyJr@cushwake.com)

**Raymond Trevisan**  
Executive Managing Director  
973.908.6090  
[Raymond.Trevisan@cushwake.com](mailto:Raymond.Trevisan@cushwake.com)

**Christine Eberle**  
Associate  
973.292.4630  
[Christine.Eberle@cushwake.com](mailto:Christine.Eberle@cushwake.com)

Cushman & Wakefield of  
New Jersey, Inc.  
Licensed Real Estate Broker  
1150 Headquarters Plaza  
Morristown, NJ 07960  
phone: +1 973 993 1200  
[cushmanwakefield.com](http://cushmanwakefield.com)

Cushman & Wakefield copyright 2015. The depiction in the included photograph of any person, entity, sign, logo or property, other than Cushman & Wakefield's client and the property offered by Cushman & Wakefield, is incidental only, and is not intended to connote any affiliation, connection, association, sponsorship or approval by or between that which is incidentally depicted and Cushman & Wakefield or its client. This shall not be deemed an offer to lease, sublease, or sell such property; and, in the event of any transaction for such property, no commission shall be earned by or payable to any cooperating broker except if otherwise provided pursuant to the express terms, rates and conditions of Cushman & Wakefield's agreement with its principal, if, as and when such commission (if any) is actually received from such principal. (Inquire for rates and additional conditions)



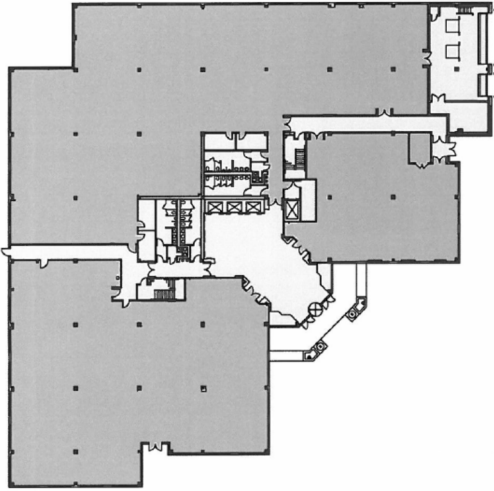
**CUSHMAN & WAKEFIELD**

**FOR LEASE**

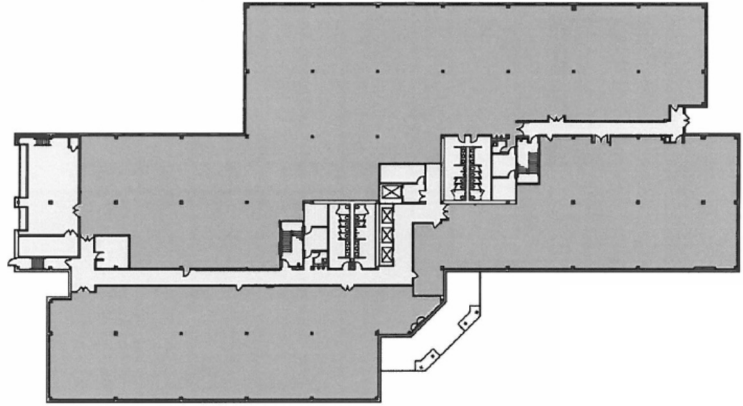
# WARREN CORPORATE CENTER

100 – 500 Warren Corporate Center Drive  
Warren, New Jersey

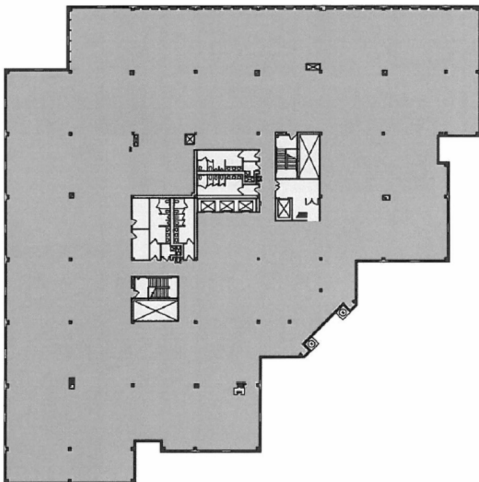
**BUILDINGS 100, 200 & 300 – TYPICAL 1<sup>ST</sup> FLOOR**



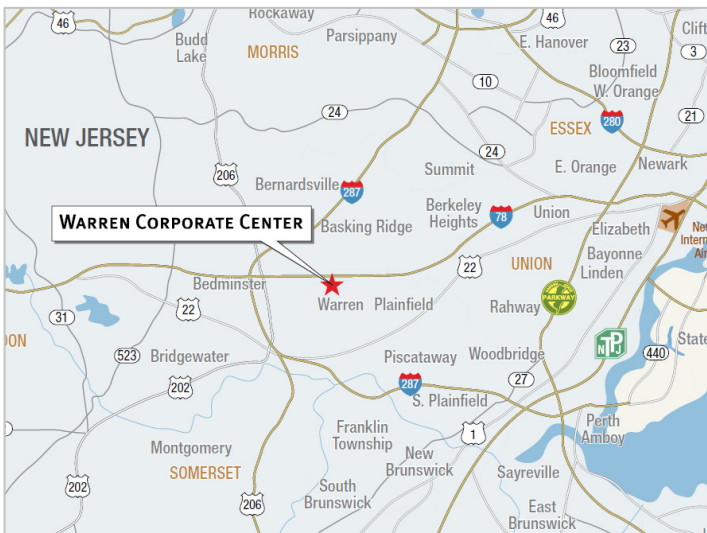
**BUILDINGS 400 & 500 – TYPICAL 1<sup>ST</sup> FLOOR**



**BUILDINGS 100, 200 & 300 – TYPICAL 2<sup>ND</sup> – 4<sup>TH</sup> FLOOR**



**BUILDINGS 400 & 500 – TYPICAL 2<sup>ND</sup> – 4<sup>TH</sup> FLOOR**



For more information, contact:

**Robert Donnelly**  
Executive Vice Chairman  
973.292.4606  
[Robert.Donnelly@cushwake.com](mailto:Robert.Donnelly@cushwake.com)

**Robert Donnelly, Jr., CCIM**  
Executive Managing Director  
973.292.4621  
[Robert.DonnellyJr@cushwake.com](mailto:Robert.DonnellyJr@cushwake.com)

**Raymond Trevisan**  
Executive Managing Director  
973.908.6090  
[Raymond.Trevisan@cushwake.com](mailto:Raymond.Trevisan@cushwake.com)

**Christine Eberle**  
Associate  
973.292.4630  
[Christine.Eberle@cushwake.com](mailto:Christine.Eberle@cushwake.com)

Cushman & Wakefield of  
New Jersey, Inc.  
Licensed Real Estate Broker  
1150 Headquarters Plaza  
Morristown, NJ 07960  
phone: +1 973 993 1200  
[cushmanwakefield.com](http://cushmanwakefield.com)