



FOR LEASE

Oak Ridge East Professional Building

675 Nicollet Blvd. E.
Burnsville, MN



HOME

HIGHLIGHTS

AVAILABLE

LOCATION

For more information, please contact:

Eric King
Senior Director
+1 651 734 2385
eric.king@cushwake.com

Ann Stahley
Director
+1 952 465 3317
ann.stahley@cushwake.com

Cushman & Wakefield
3500 American Blvd W Suite 200
Minneapolis, MN 55431
cushmanwakefield.com

©2017 Cushman & Wakefield. NO WARRANTY OR REPRESENTATION, EXPRESS OR IMPLIED, IS MADE TO THE ACCURACY OR COMPLETENESS OF THE INFORMATION CONTAINED HEREIN, AND SAME IS SUBMITTED SUBJECT TO ERRORS, OMISSIONS, CHANGE OF PRICE, RENTAL OR OTHER CONDITIONS, WITHDRAWAL WITHOUT NOTICE, AND TO ANY SPECIAL LISTING CONDITIONS IMPOSED BY THE PROPERTY OWNER(S). AS APPLICABLE, WE MAKE NO REPRESENTATION AS TO THE CONDITION OF THE PROPERTY (OR PROPERTIES) IN QUESTION.

Oak Ridge East Professional Building

675 Nicollet Blvd. E., Burnsville, MN

[HOME](#)[HIGHLIGHTS](#)[AVAILABLE](#)[LOCATION](#)

Property Highlights

- Class A Medical Office Space
- Easy access from I-35W and I-35E
- Just blocks from the Fairview Ridges Campus
- Underground parking garage
- Climate controlled document storage
- Attractive common area with planter garden and fountain
- Two-story atrium and skylight
- ADA compliant restrooms

BUILDING INFORMATION

BUILDING SIZE	52,391 sq. ft.
YEAR BUILT	2001
FLOORS	2
AVAILABILITY	1,433 - 10,454 sq. ft.
LEASE RATE	\$34.00 Gross per sq. ft.
2016 ESTIMATED TAX & OPER. EXP.	\$4.24 per sq. ft.



For more information, please contact:

Eric King
Senior Director
+1 651 734 2385
eric.king@cushwake.com

Ann Stahley
Director
+1 952 465 3317
ann.stahley@cushwake.com

Cushman & Wakefield
3500 American Blvd W Suite 200
Minneapolis, MN 55431
cushmanwakefield.com

Oak Ridge East Professional Building

675 Nicollet Blvd. E., Burnsville, MN



HOME

HIGHLIGHTS

AVAILABLE

LOCATION

Space Available

Click Suite # to View Floorplan

*Contiguous

Suite Number	Square Footage	Available
*200	6,445	Now
*215	1,697	180 days
*225	1,433	Now
*230	2,753	Now
*200/215/225	10,454	180 days
245	3,432	1/1/19



For more information, please contact:

Eric King
Senior Director
+1 651 734 2385
eric.king@cushwake.com

Ann Stahley
Director
+1 952 465 3317
ann.stahley@cushwake.com

Cushman & Wakefield
3500 American Blvd W Suite 200
Minneapolis, MN 55431
cushmanwakefield.com

Oak Ridge East Professional Building

675 Nicollet Blvd. E., Burnsville, MN

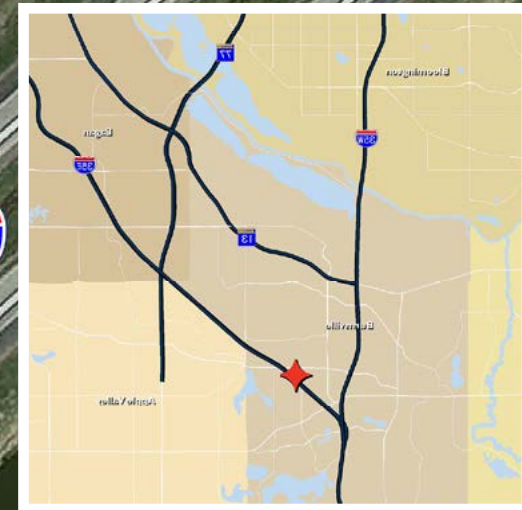
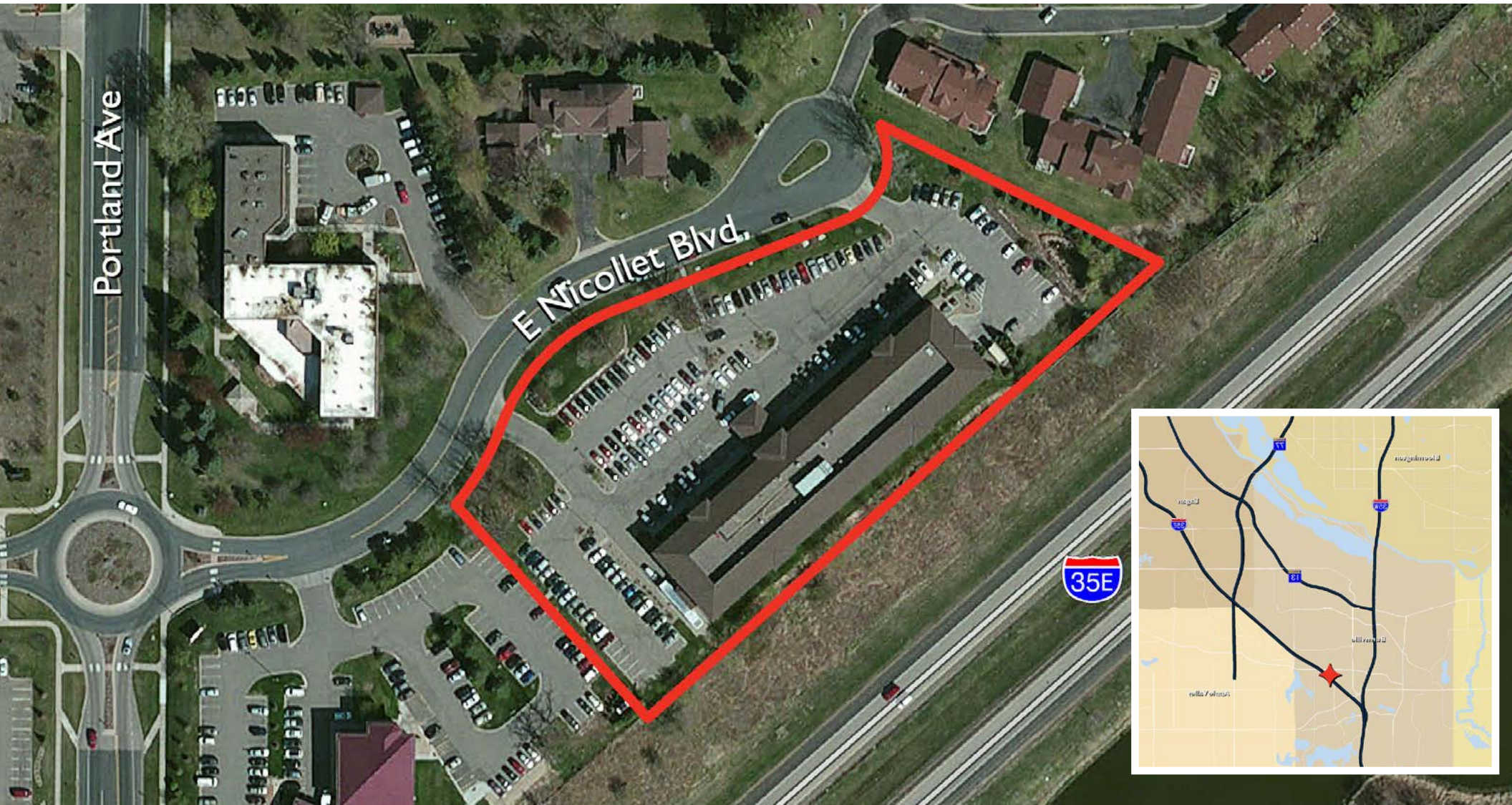


HOME

HIGHLIGHTS

AVAILABLE

LOCATION



For more information, please contact:

Eric King
Senior Director
+1 651 734 2385
eric.king@cushwake.com

Ann Stahley
Director
+1 952 465 3317
ann.stahley@cushwake.com

Cushman & Wakefield
3500 American Blvd W Suite 200
Minneapolis, MN 55431
cushmanwakefield.com

Oak Ridge East Professional Building

675 Nicollet Blvd. E., Burnsville, MN



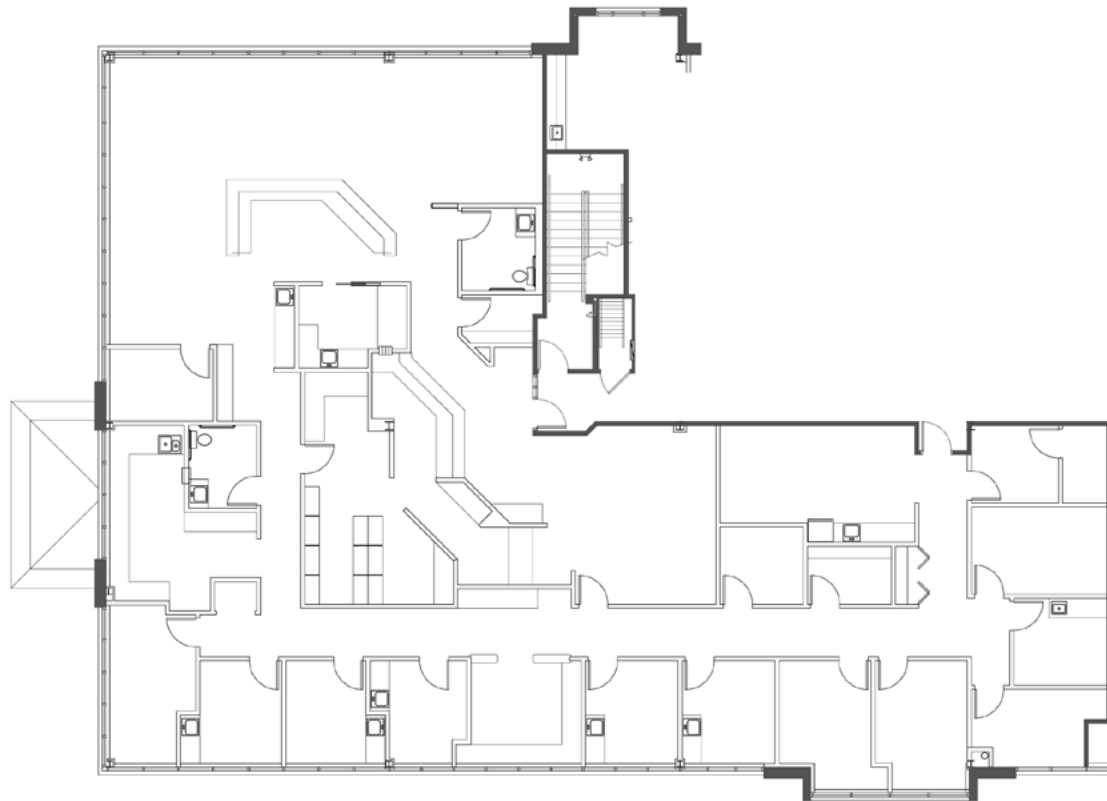
HOME

HIGHLIGHTS

AVAILABLE

LOCATION

Suite 200
6,445 RSF



For more information, please contact:

Eric King
Senior Director
+1 651 734 2385
eric.king@cushwake.com

Ann Stahley
Director
+1 952 465 3317
ann.stahley@cushwake.com

Cushman & Wakefield
3500 American Blvd W Suite 200
Minneapolis, MN 55431
cushmanwakefield.com

Oak Ridge East Professional Building

675 Nicollet Blvd. E., Burnsville, MN



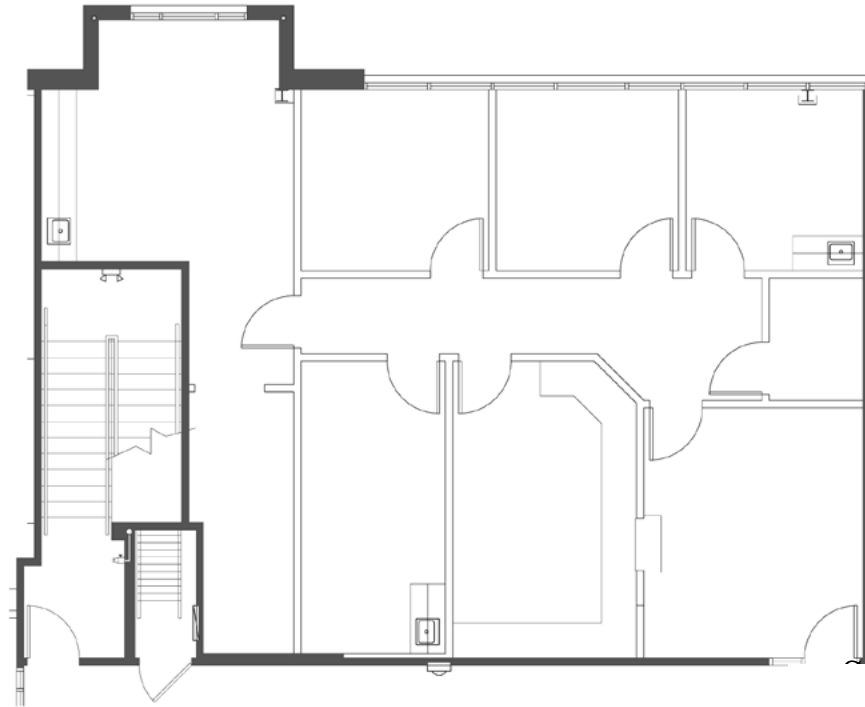
HOME

HIGHLIGHTS

AVAILABLE

LOCATION

Suite 215
1,697 RSF



For more information, please contact:

Eric King
Senior Director
+1 651 734 2385
eric.king@cushwake.com

Ann Stahley
Director
+1 952 465 3317
ann.stahley@cushwake.com

Cushman & Wakefield
3500 American Blvd W Suite 200
Minneapolis, MN 55431
cushmanwakefield.com

Oak Ridge East Professional Building

675 Nicollet Blvd. E., Burnsville, MN



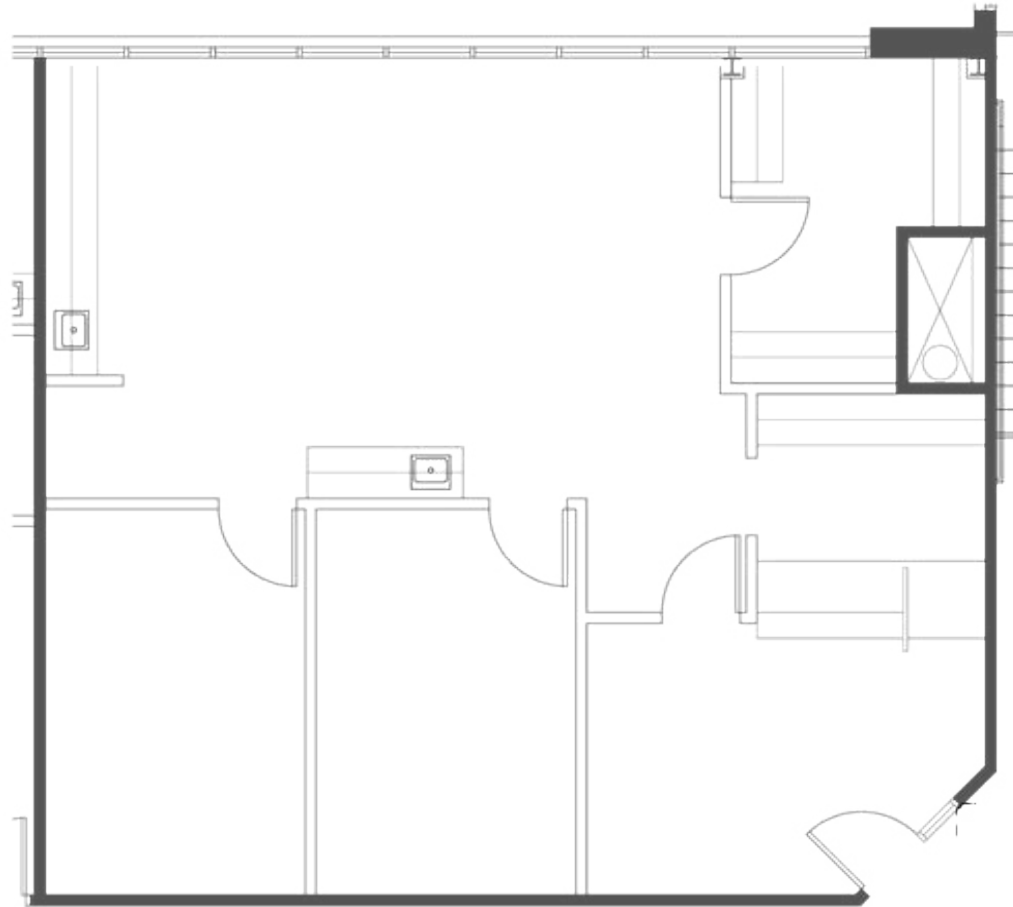
HOME

HIGHLIGHTS

AVAILABLE

LOCATION

Suite 225
1,433 RSF



For more information, please contact:

Eric King
Senior Director
+1 651 734 2385
eric.king@cushwake.com

Ann Stahley
Director
+1 952 465 3317
ann.stahley@cushwake.com

Cushman & Wakefield
3500 American Blvd W Suite 200
Minneapolis, MN 55431
cushmanwakefield.com

Oak Ridge East Professional Building

675 Nicollet Blvd. E., Burnsville, MN



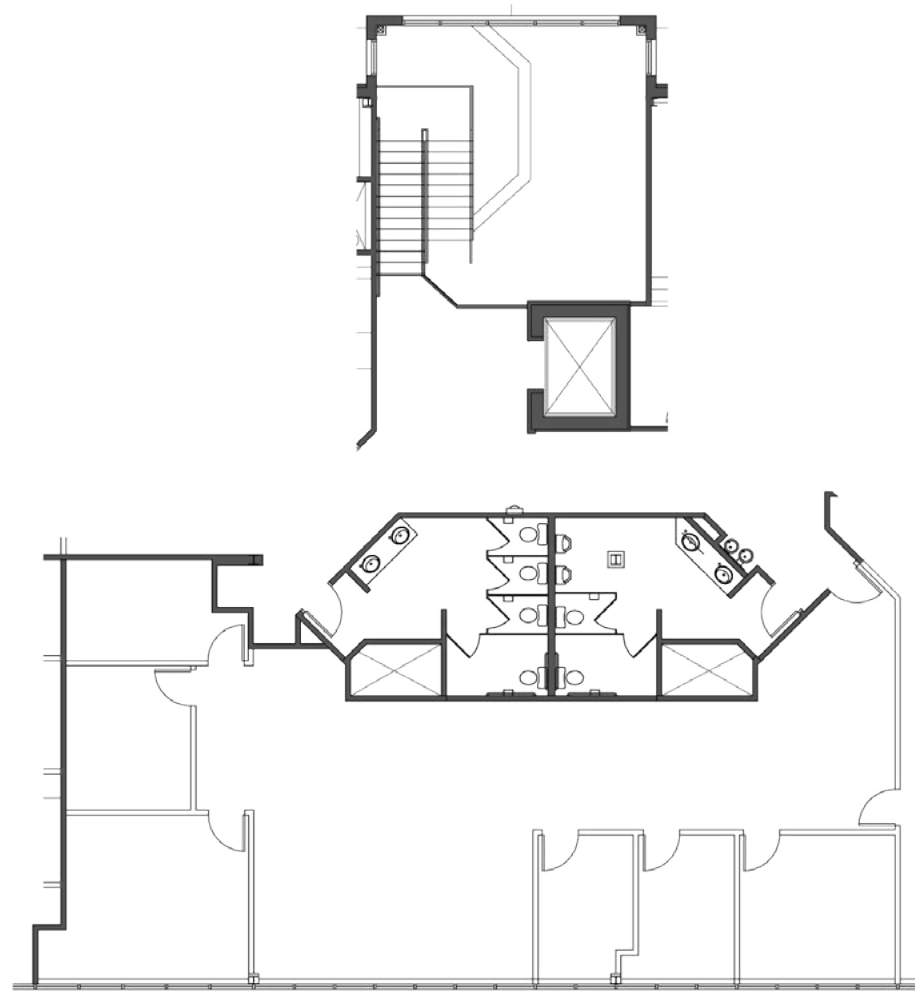
HOME

HIGHLIGHTS

AVAILABLE

LOCATION

Suite 230
2,753 RSF



For more information, please contact:

Eric King
Senior Director
+1 651 734 2385
eric.king@cushwake.com

Ann Stahley
Director
+1 952 465 3317
ann.stahley@cushwake.com

Cushman & Wakefield
3500 American Blvd W Suite 200
Minneapolis, MN 55431
cushmanwakefield.com

Oak Ridge East Professional Building

675 Nicollet Blvd. E., Burnsville, MN



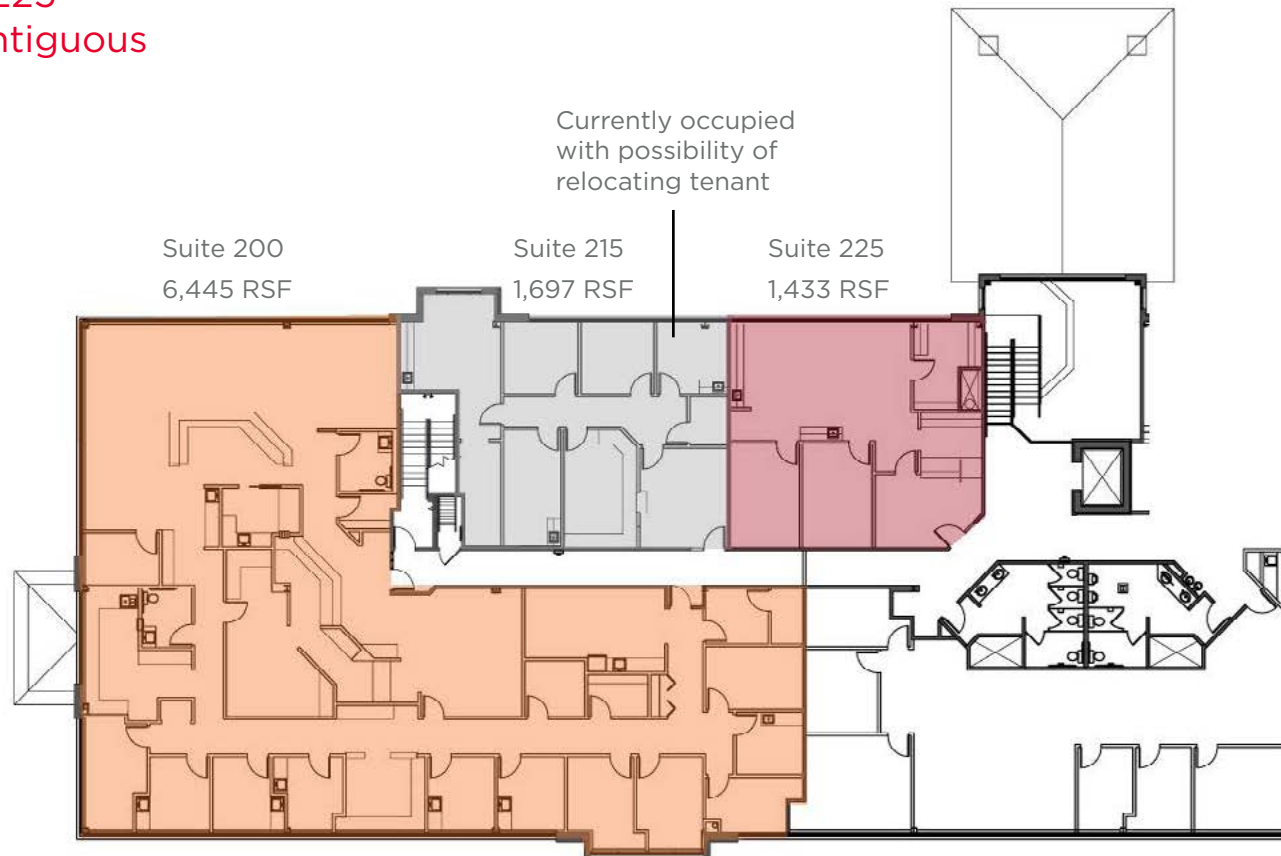
HOME

HIGHLIGHTS

AVAILABLE

LOCATION

Suite 200/215/225 10,454 RSF Contiguous



For more information, please contact:

Eric King
Senior Director
+1 651 734 2385
eric.king@cushwake.com

Ann Stahley
Director
+1 952 465 3317
ann.stahley@cushwake.com

Cushman & Wakefield
3500 American Blvd W Suite 200
Minneapolis, MN 55431
cushmanwakefield.com

Oak Ridge East Professional Building

675 Nicollet Blvd. E., Burnsville, MN



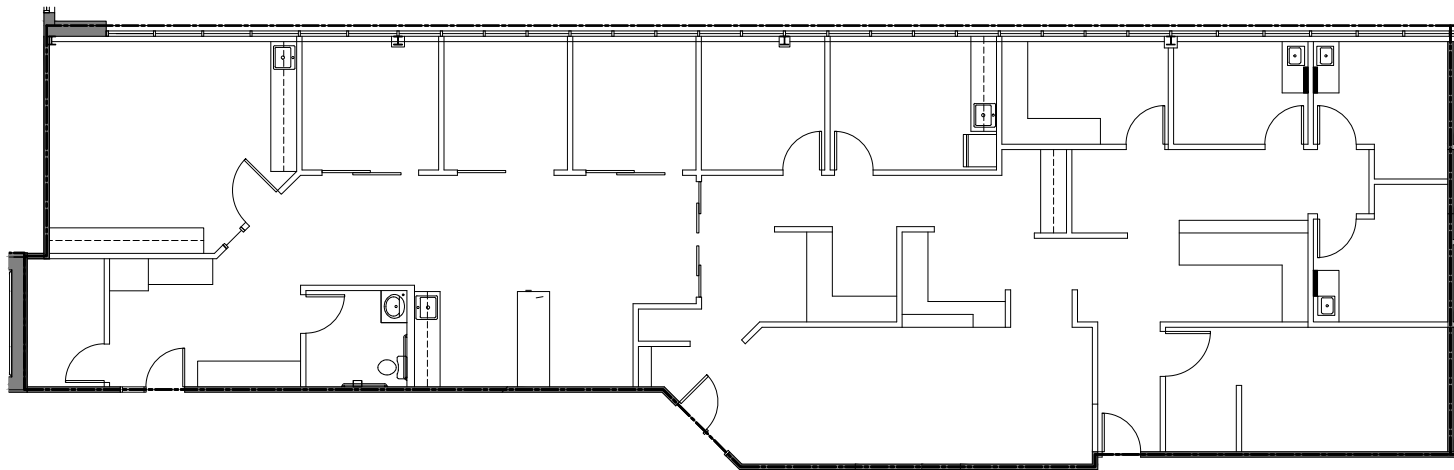
HOME

HIGHLIGHTS

AVAILABLE

LOCATION

Suite 245
3,432 RSF



For more information, please contact:

Eric King
Senior Director
+1 651 734 2385
eric.king@cushwake.com

Ann Stahley
Director
+1 952 465 3317
ann.stahley@cushwake.com

Cushman & Wakefield
3500 American Blvd W Suite 200
Minneapolis, MN 55431
cushmanwakefield.com