

Fine Arts Building

1017 S.W. Morrison St., LBBY

Portland, OR 97205-2650

503-222-1038

fab@pdxFineArtsBuilding.com

Location:

Downtown Core of the Central Business District

Lease Terms:

One (1) year minimum, commercial gross lease. Electric, garbage, gas, water included. Tenant pays phone/ internet. First month rent and deposits due at signing.

About Fine Arts Building:

For over a century (since 1906), the Fine Arts Building has featured a simple classic architecture full of character and charm with distinctive high ceilings, peculiar individual office floor plans, large window spaces offering great views, and more. It has been the home of many artisans and housed the entrepreneurial spirit of the self-employed for decades. Tenants here are proud to provide this ambiance for their clients.

The Building & Area:

The building is located one block north from the library. We are along the MAX train lines and street car routes. Target is across the street to which supplies many basic office supplies as well as home/ office furnishings and sundries.

The street is lined with trees on both sides. Several restaurants are in the immediate area. Many surrounding office buildings are also historic buildings, adding to the charming and relaxed neighborhood feeling.

Parking:

Garage Parking: Smart Park, 730 S.W. 10th Ave. - \$1.80/ hr.

Street Parking: Sunday (1pm - 7pm), Monday - Saturday (8am - 7pm) @ \$1.80/ hr.

Transportation: The Fine Arts Building is directly on the MAX light rail and street car routes along 10th, 11th, and Morrison St. We are surrounded on three of four sides of our block by these public transportation routes. Bus stops are also an easy option.

Features:

- * high ceilings
- * ceiling fan
- * huge window spaces
- * steam heat radiators
- * convenient access to Tri-Met train, street car, and bus routes
- * gross lease (incl. electricity, heating, water), 1 year minimum

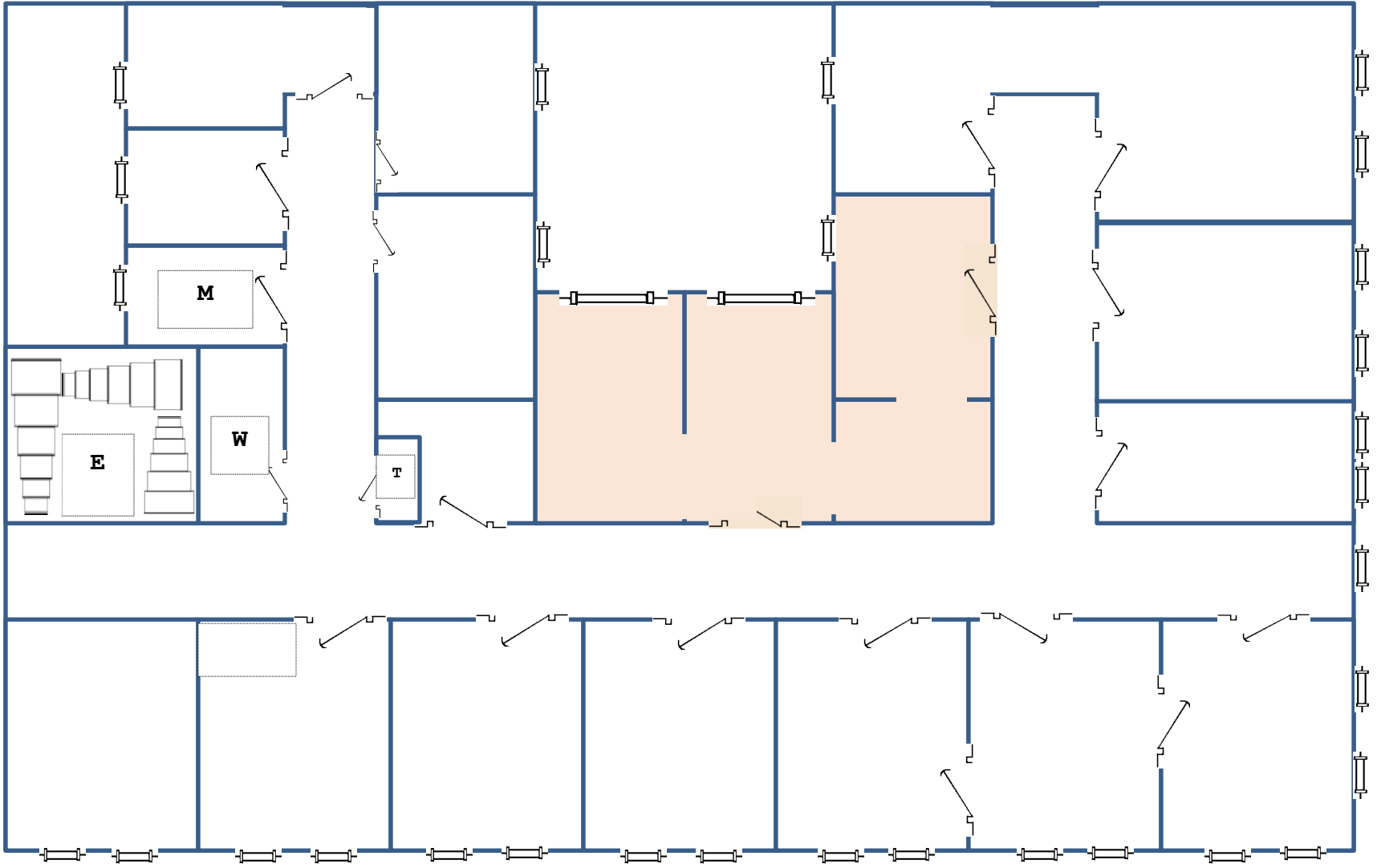
Contact

503-222-1038

www.pdxFineArtsBuilding.com







SW 10th Ave