



ONE ENCINO

16661 VENTURA BLVD | ENCINO, CA

BUILDING TOP SIGNAGE AVAILABLE

OFFICE SPACE
FOR LEASE

**NEW OWNERSHIP
NEW MANAGEMENT
NEW LEASING TEAM**

CBRE

PROPERTY FEATURES

- New, well established ownership
- ShubinDonaldson designed, complete building renovation underway. Office floors, elevator landings and bathrooms renovation completed
- All new HVAC central plant featuring two 200 ton Multistack Turbocor equipped chillers, cooling tower, filtration system, pumps, boiler and building automation system that performs 25% better than California Title-24 at ARI
- Prime Ventura Blvd. location in the heart of Encino
- Rare ±18' ceiling height on ground floor
- Rare Opportunity for Anchor Medical Tenant with Building Top Signage
- Large, contiguous blocks of space
- Easy 101 and 405 access
- Full service building with on-site management team, engineer, day porter and valet assist for visitor
- Great unobstructed views
- Creative office suites with polished concrete floors and open ceilings available

TENANT MONTHLY PARKING

Unreserved \$95

Garage Unreserved \$105

AVAILABILITIES

FLOOR	SUITE	RSF
1	105	1,615
1	110	1,653
1	111	1,849
1	115	2,126
2	226	1,770
3	304	1,164
3	314	938
4	404	2,405
4	405	1,985
4	410 [†]	736
5	502	1,126
5	504	1,765
6	600-608	6,001
6	613	1,202
8	800	1,910
8	806	1,940
8	816	1,642
8	820	1,090
8	826	3,213
9	The Aerie*	3,425

Contiguous
up to 7,243 SF

Contiguous
up to 2,891 SF

Contiguous
up to 5,492 SF

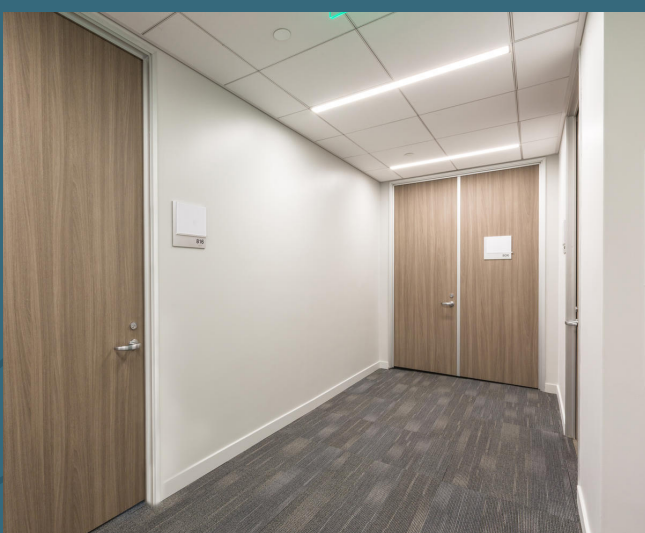


RATE:
NEGOTIABLE

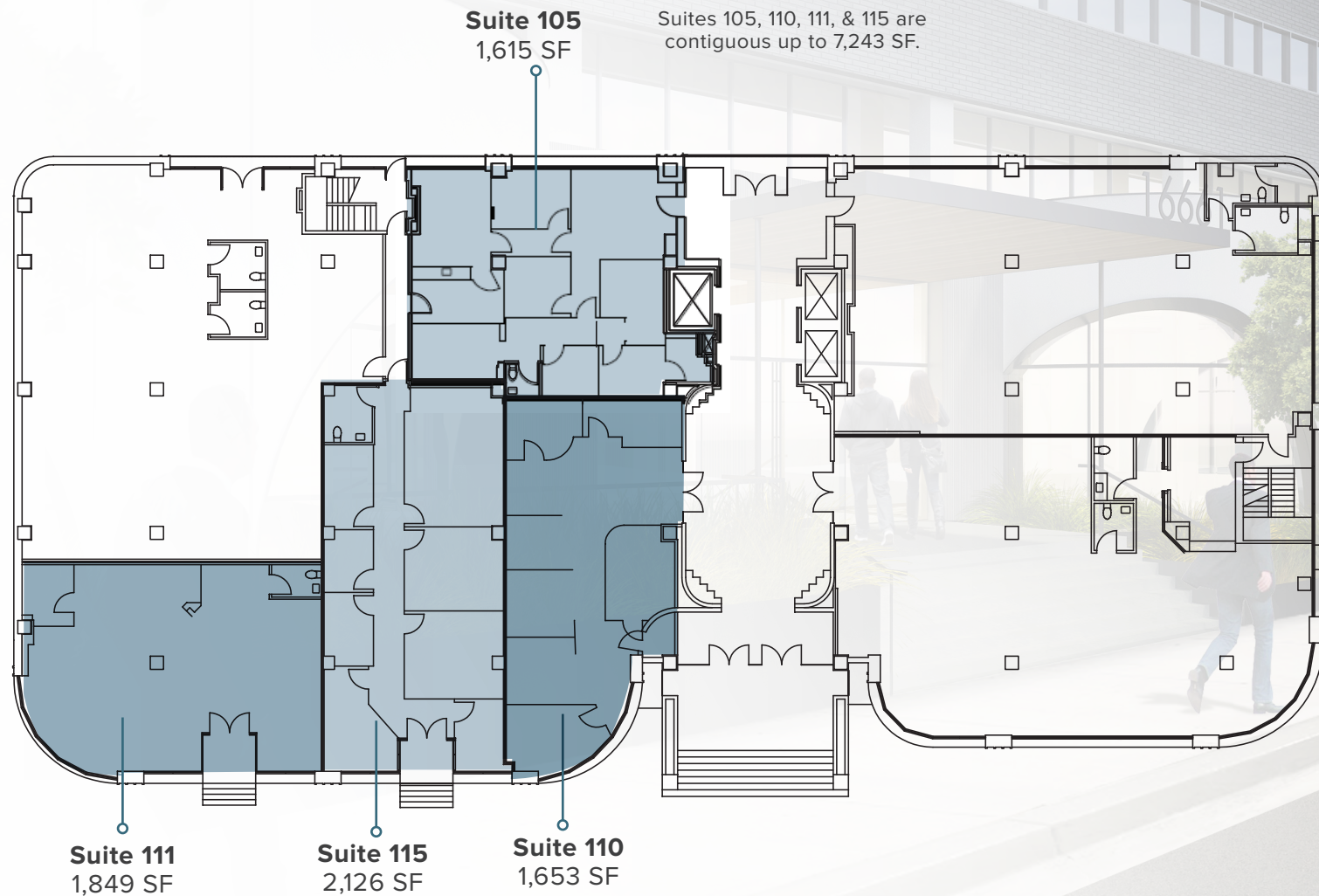
[†] Available Feb. 1, 2019

*Please request The Aerie brochure.

*Opportunity for the full 8th floor - contiguous to 15,980 SF



FLOOR PLAN 1



SUITE 110 DESCRIPTION

Former bank branch. Will be delivered in shell condition with suite 115. 16 ft clear height.

SUITE 111 DESCRIPTION

Built out pharmacy space with bathroom.

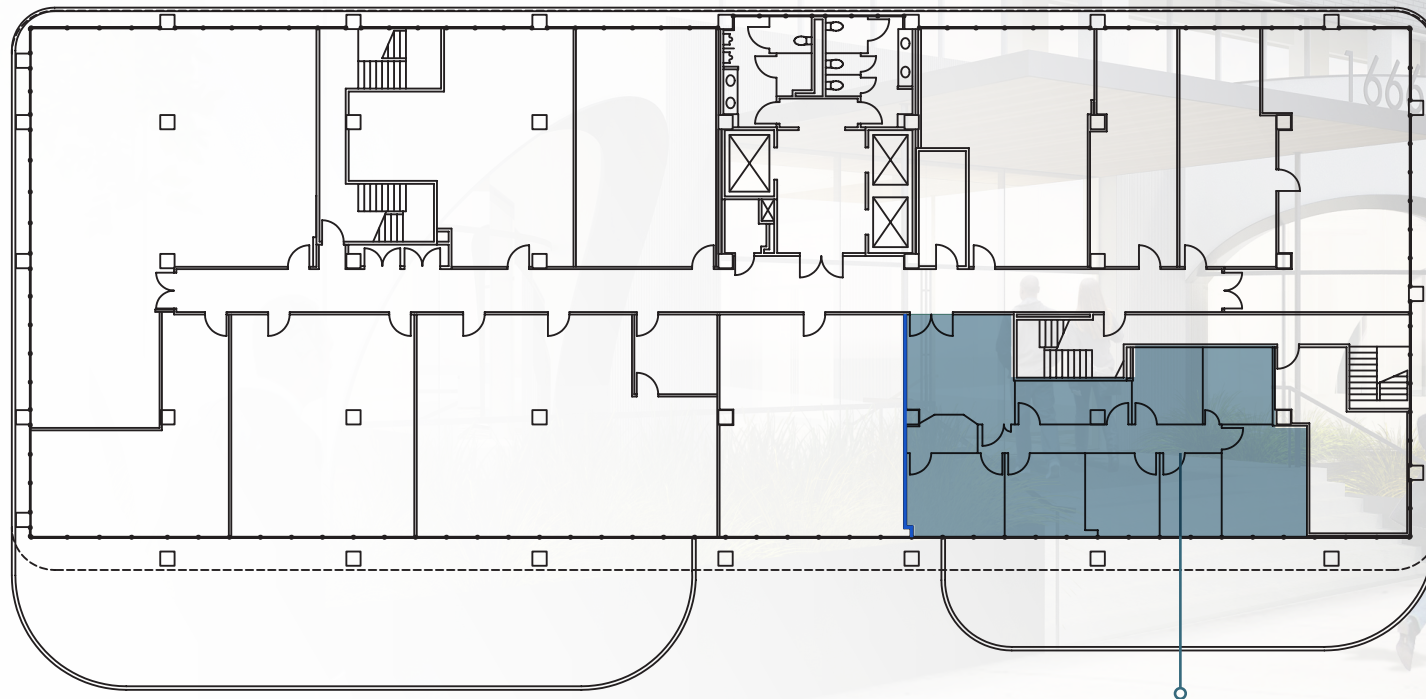
SUITE 105 DESCRIPTION

Per as built.

SUITE 115 DESCRIPTION

Will be delivered in shell condition with suite 110. 16 ft clear height with bathroom. 2 suite entrances.

FLOOR PLAN 2

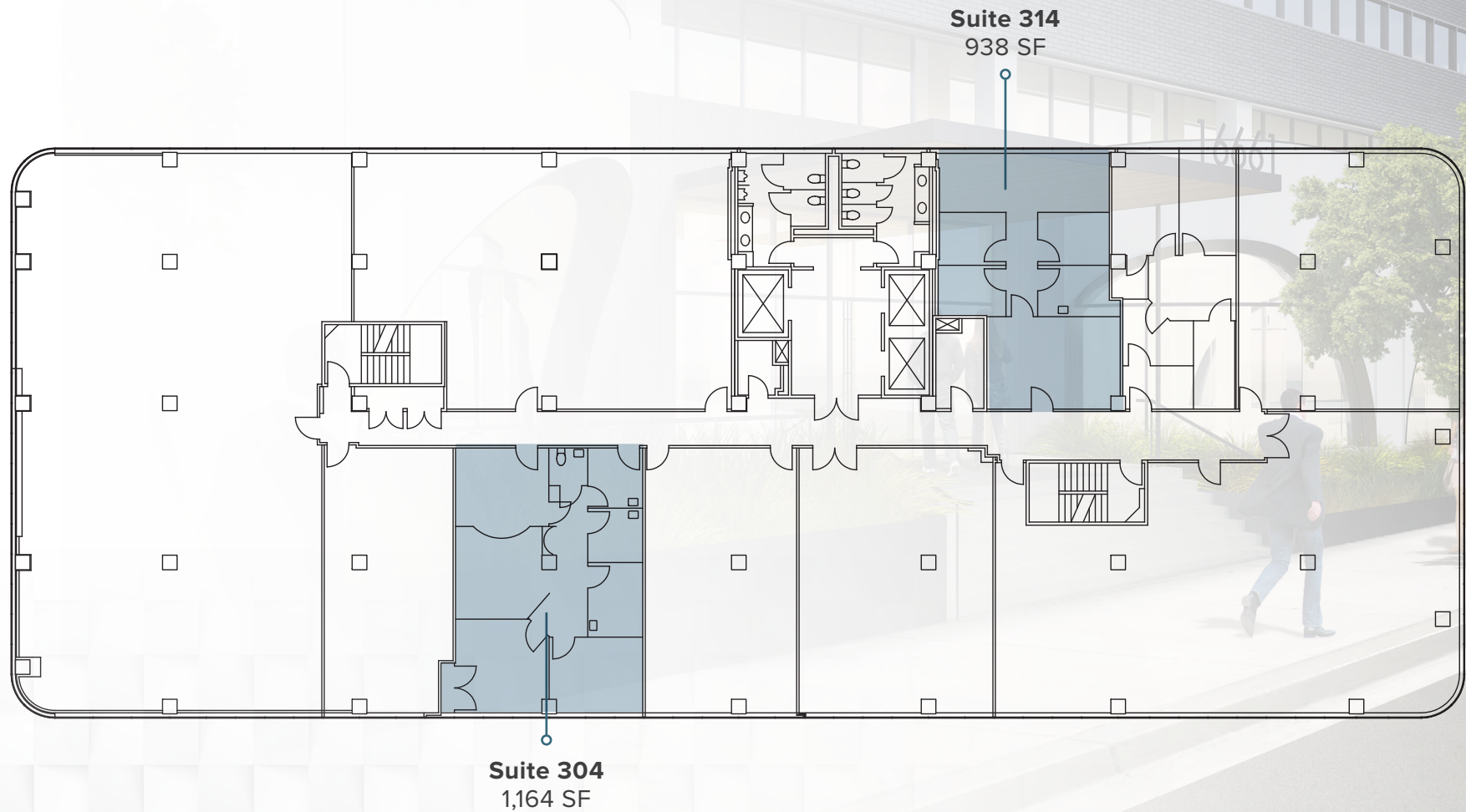


Suite 226
1,770 SF

SUITE 226 DESCRIPTION

Per as-built.

FLOOR PLAN 3



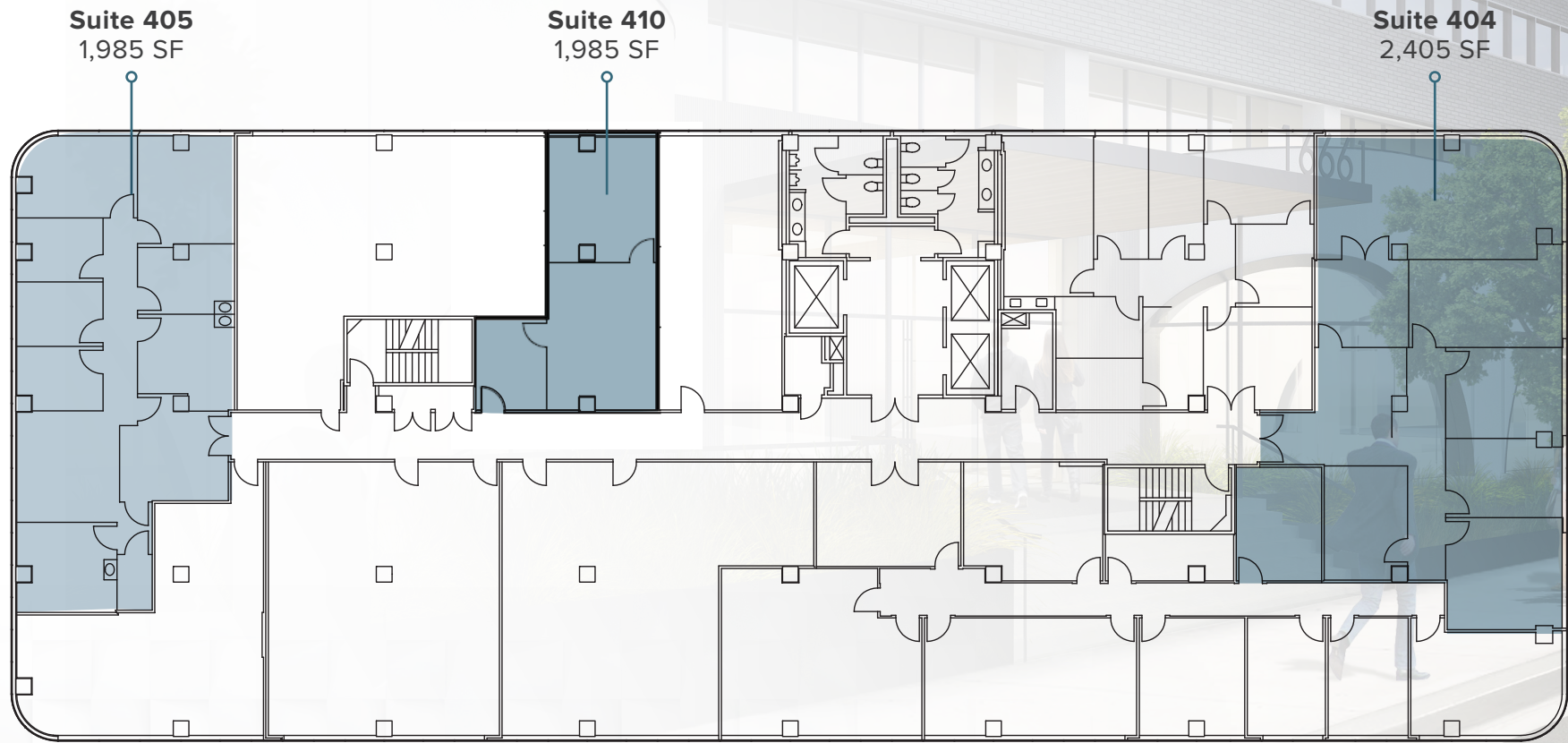
SUITE 304 DESCRIPTION

Medical office space. Reception, 2 window offices, 3 interior rooms. Bathroom and sinks.

SUITE 314 DESCRIPTION

Large reception area, 4 interior rooms, large window office and sink.

FLOOR PLAN 4



SUITE 404 DESCRIPTION

5 window offices, conference room, reception area.

SUITE 405 DESCRIPTION

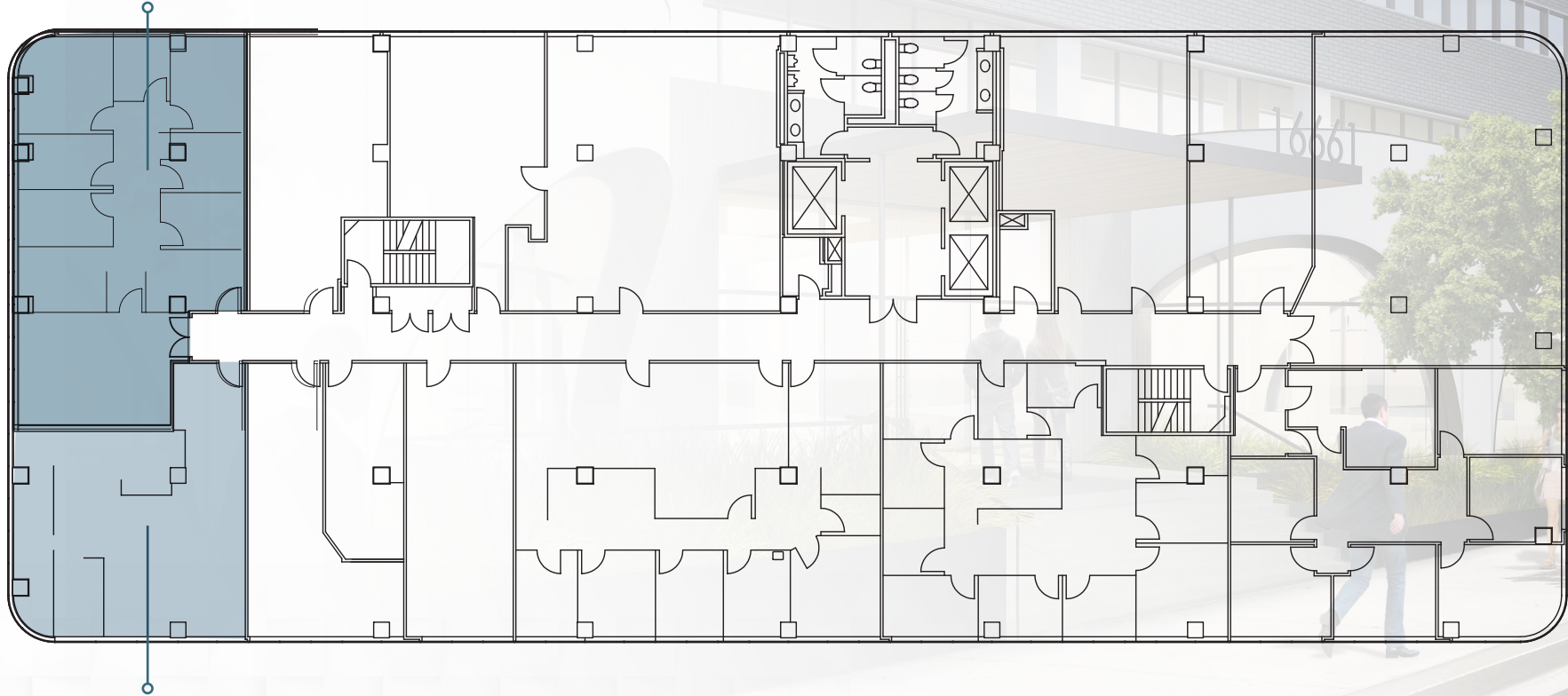
Medical office. 2 window offices, 6 interior rooms. 3 sinks.

SUITE 410 DESCRIPTION

Available Feb. 1, 2019.

FLOOR PLAN 5

Suite 504
1,765 SF



Suite 502
1,126 SF

SUITE 502 DESCRIPTION

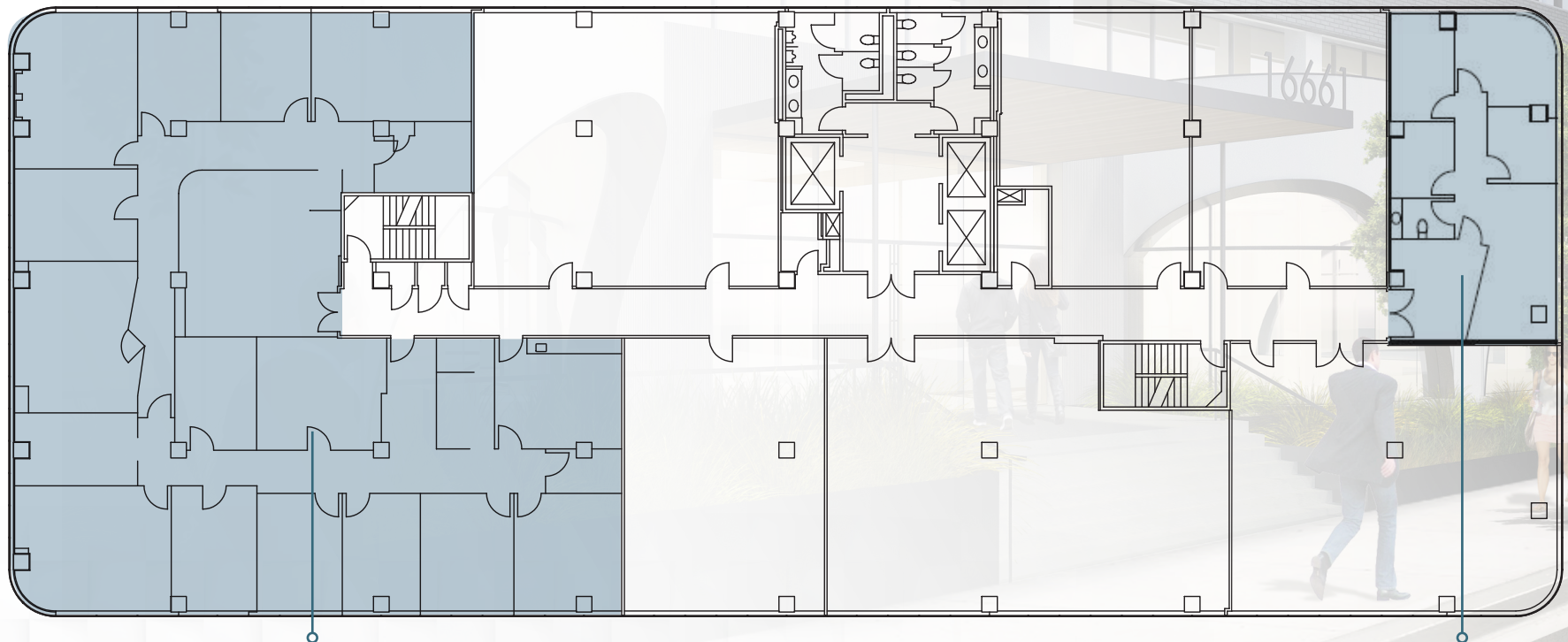
Large open area was coffee shop for building.

SUITE 504 DESCRIPTION

Per As-built.

*Suite 502 and 504 contiguous to 2,891 SF

FLOOR PLAN 6



Suite 600-608
6,001 SF

Suite 613
1,202 SF

SUITE 600-608 DESCRIPTION

Large reception, 10 window offices, 3 interior offices, full kitchen.

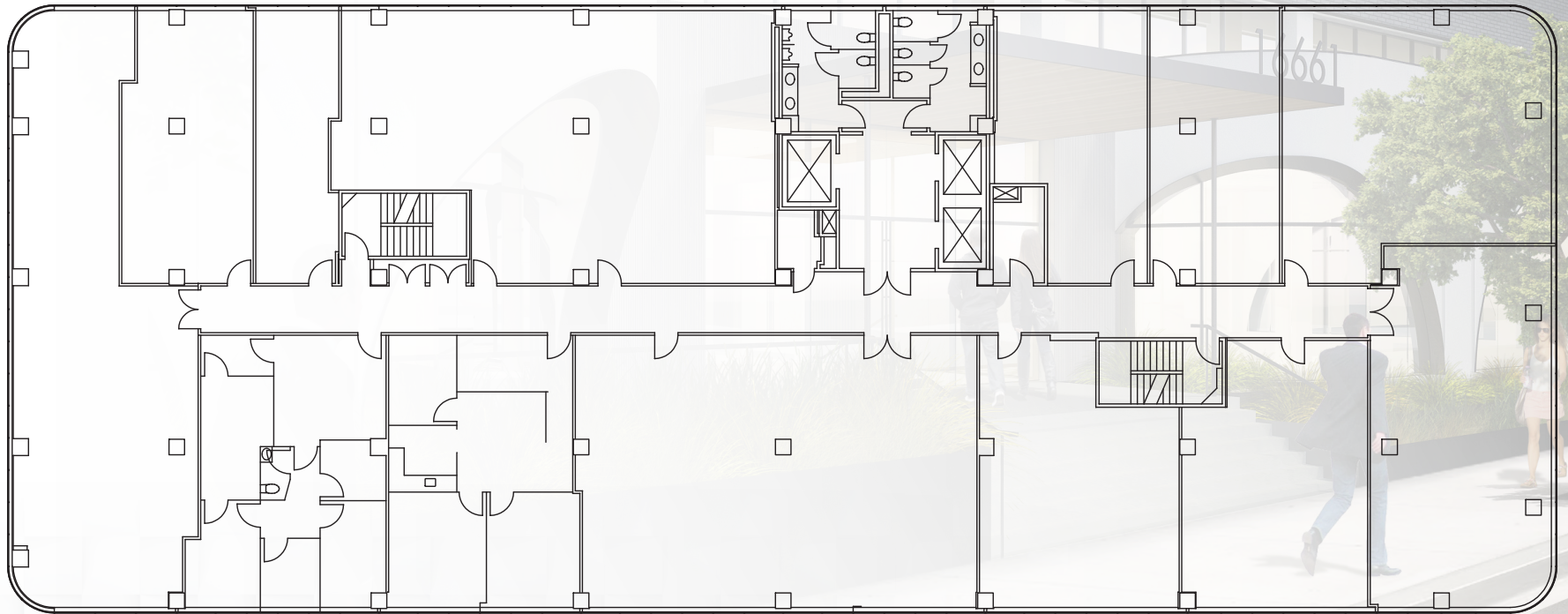
SUITE 613

Per As-built

FLOOR PLAN 7

7TH FLOOR

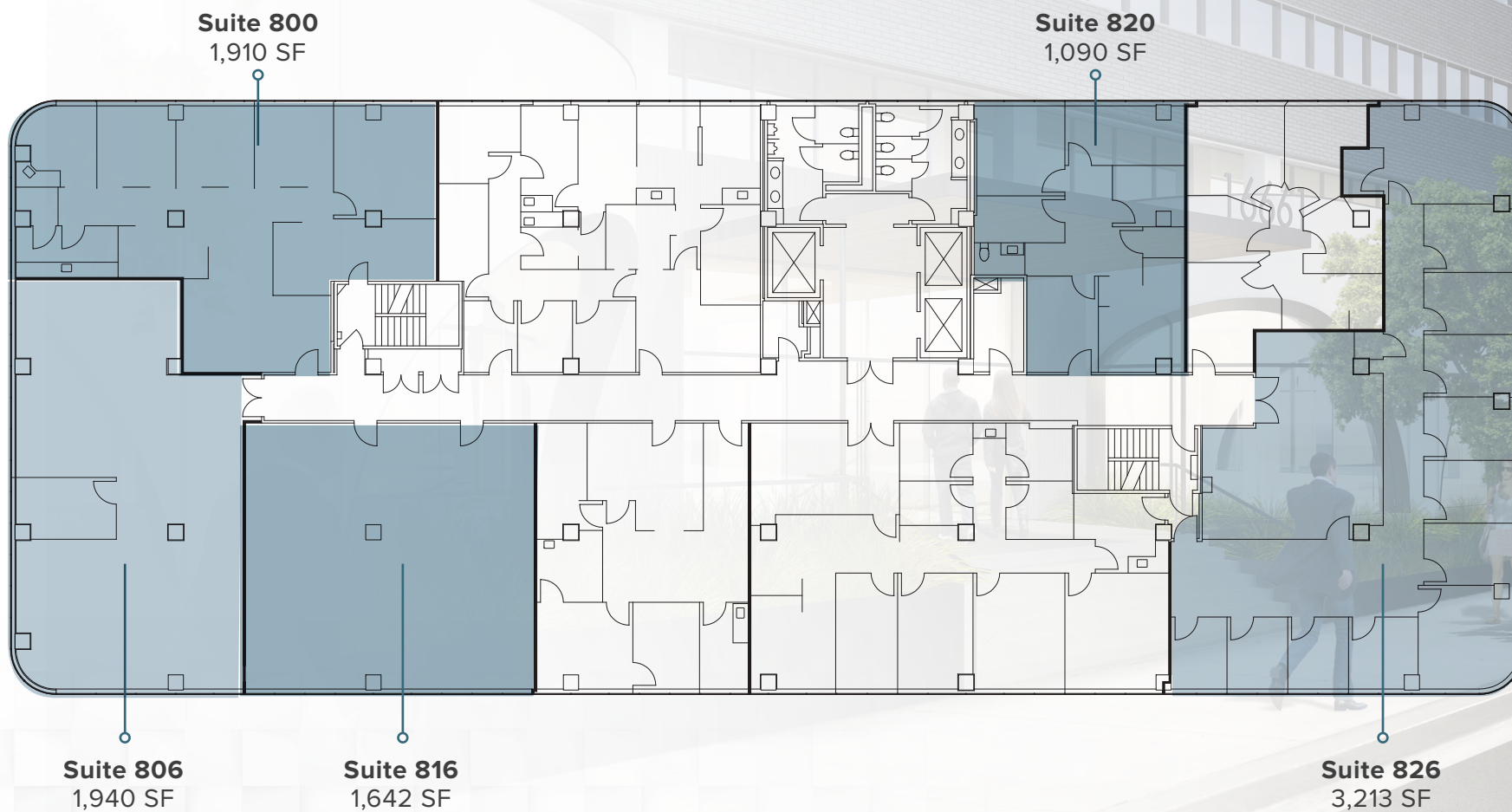
Fully Leased



FLOOR PLAN 8

FULL FLOOR AVAILABLE

Contiguous to 15,980 SF



SUITE 800 DESCRIPTION

Dental office ready to lease. 5 window exam rooms, reception, file room

SUITE 806 DESCRIPTION

Shell condition.

SUITE 816 DESCRIPTION

Shell condition.

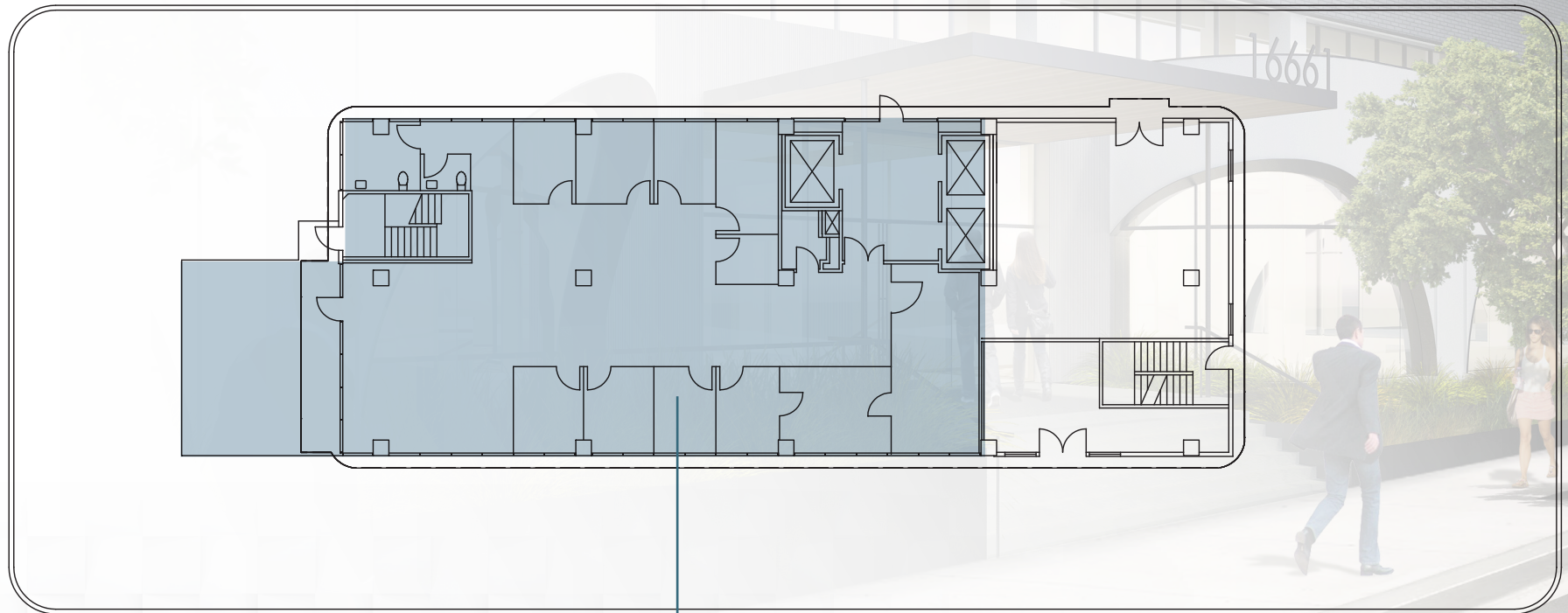
SUITE 820 DESCRIPTION

Per as-built. Existing bathroom and plumbing.

SUITE 826 DESCRIPTION

Per as-built.

FLOOR PLAN 9



The Aerie
3,425 SF

THE AERIE DESCRIPTION

Penthouse. 2 bathrooms.



DEMOGRAPHICS

1 MILE



\$191,931
Average Income



10,870
Population



2,288
Total Businesses



4,323
Households



21,966
Daytime Employment



48.40
Median Age

3 MILES



\$111,994
Average Income



150,737
Population



9,190
Total Businesses



61,040
Households



92,364
Daytime Employment



40.10
Median Age



16661 VENTURA BLVD | ENCINO, CA

FOR INFORMATION, CONTACT:

JOHN LA SPADA
First Vice President
Lic. 01415299T
+1 805 288 4678
john.laspada@cbre.com

DAN CHERRIE
Vice President
Lic. 01265154
+1 818 251 3610
dan.cherrie@cbre.com

BILL CLARK
First Vice President
Lic. 01315127
+1 805 288 4677
bill.clark@cbre.com

© 2018 CBRE, Inc. All rights reserved. This information has been obtained from sources believed reliable, but has not been verified for accuracy or completeness. Any projections, opinions, or estimates are subject to uncertainty. The information may not represent the current or future performance of the property. You and your advisors should conduct a careful, independent investigation of the property and verify all information. Any reliance on this information is solely at your own risk. CBRE and the CBRE logo are service marks of CBRE, Inc. and/or its affiliated or related companies in the United States and other countries. All other marks displayed on this document are the property of their respective owners. Photos herein are the property of their respective owners and use of these images without the express written consent of the owner is prohibited.

CBRE

CBRE, INC
Broker Lic. 00409987