

# FOR LEASE - Development Order In Place! Billy Creek Warehouse Facility With Storage Yard

5590 Division Dr. Fort Myers, FL 33905



**Lease Rate: \$5,000/Mo**

**CAM: \$2.00/SF (Estimated)**

## PROPERTY FEATURES

5,000 SF Warehouse Facility

Land Size: .70 acres

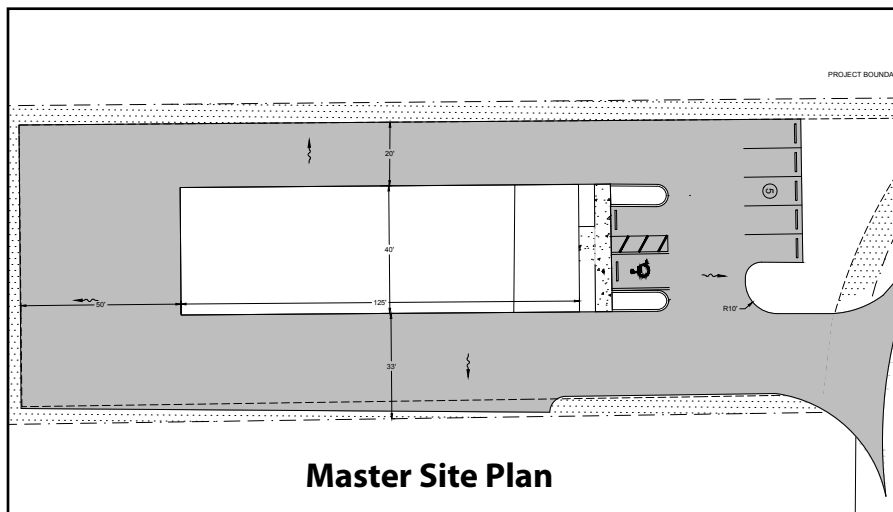
Grade level OH Doors: 3 – 12'x14'

Fenced Yard

## BUILD TO SUIT

Owner Will Build-To-Tenant Specifications

Ready Within 6 Months of Signed  
Lease Agreement



**Master Site Plan**

**LOCATED IN BILLY CREEK  
INDUSTRIAL PARK WITH  
CLOSE PROXIMITY TO I-75**

For more information, please contact:

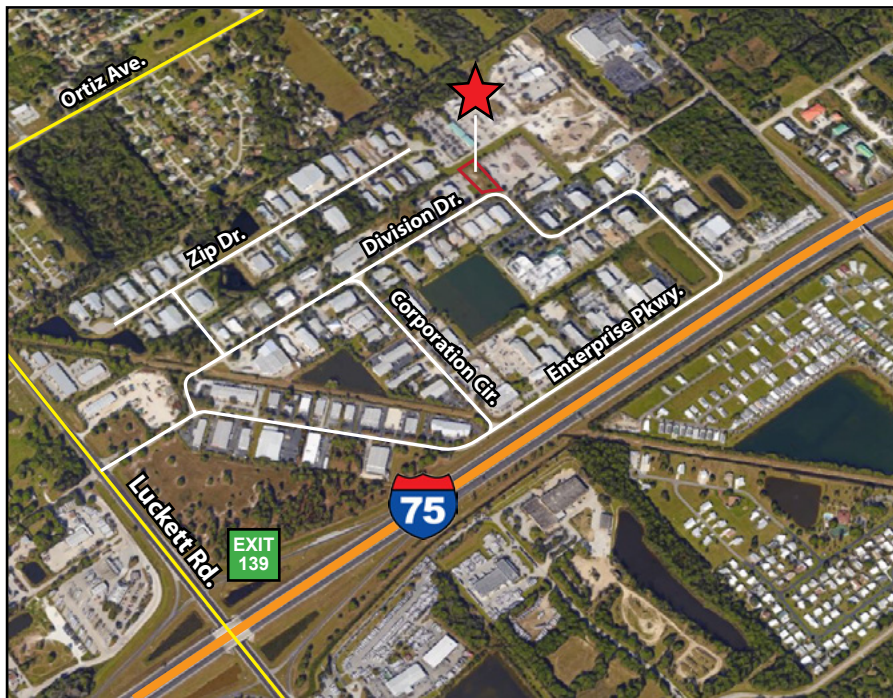
**Derek Bornhorst, CCIM**  
Senior Vice President  
Direct 239.210.7607  
[dbornhorst@lee-associates.com](mailto:dbornhorst@lee-associates.com)

**Jerry Messonnier, SIOR**  
Principal  
Direct 239.210.7610  
[jmessonnier@lee-associates.com](mailto:jmessonnier@lee-associates.com)

**Bob Johnston, SIOR**  
Principal  
Direct 239.210.7601  
[bjohnston@lee-associates.com](mailto:bjohnston@lee-associates.com)

**LEE & ASSOCIATES | Naples-Ft. Myers**  
6300 Techster Boulevard, Suite 1  
Fort Myers, FL 33966  
[www.lee-FL.com](http://www.lee-FL.com)

The information contained herein was obtained from sources believed reliable, however, Lee & Associates makes no guarantees, warranties or representations as to the completeness or accuracy thereof. The presentation of this property is submitted subject to errors, omissions, change of price or conditions prior to sale or lease or withdrawal without notice.

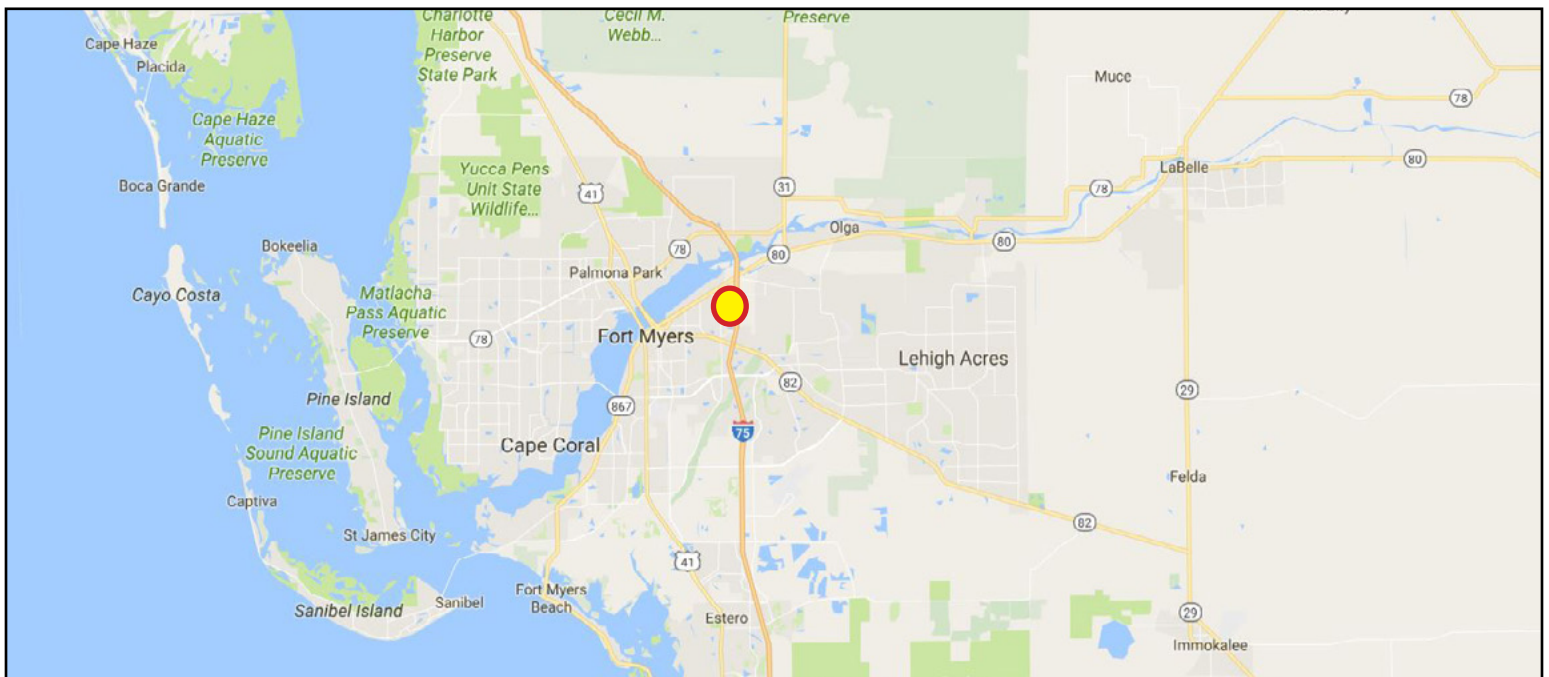
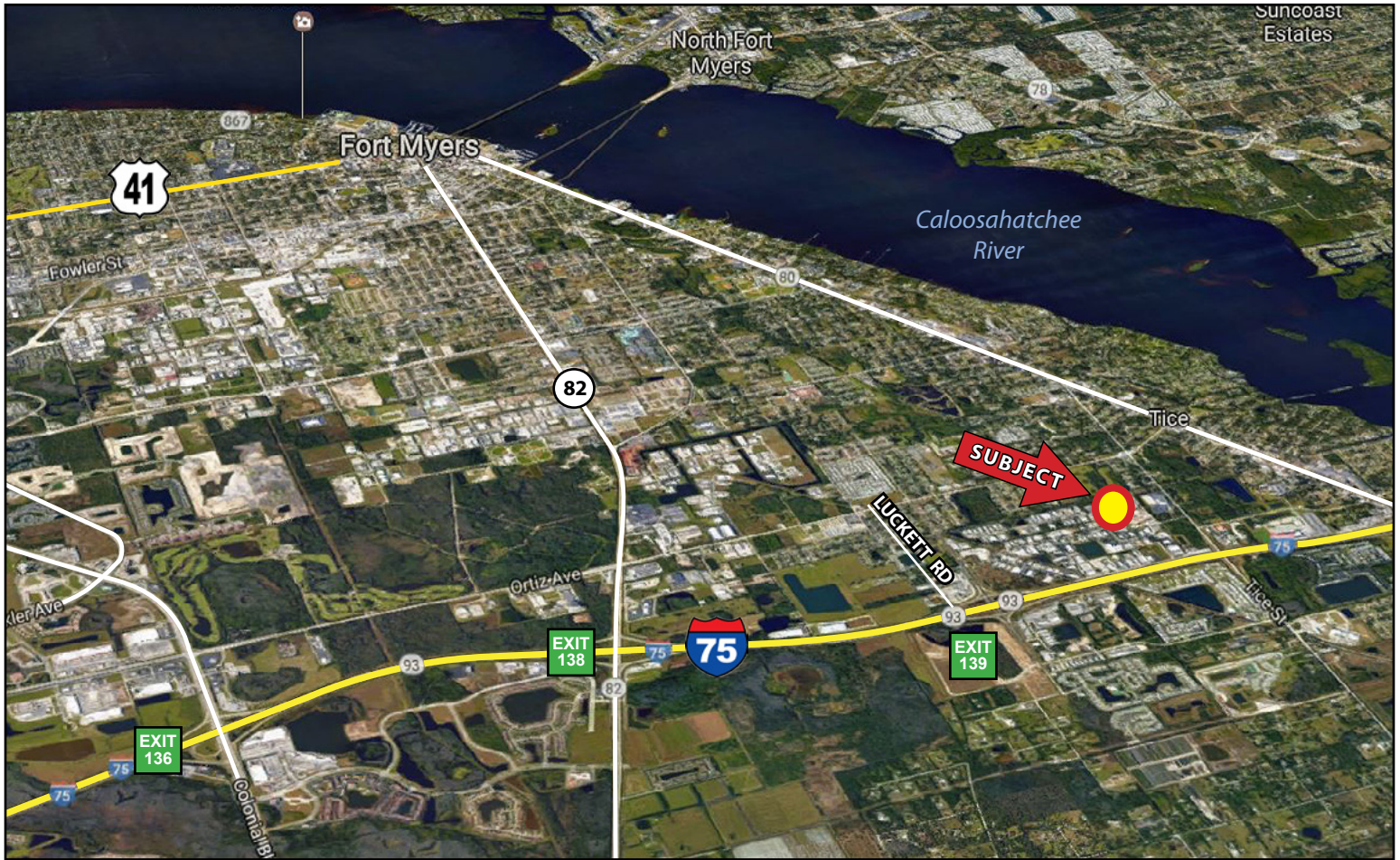


**YOUR LOCAL MARKET EXPERT**



# FOR LEASE - Development Order in Place! Billy Creek Warehouse Facility With Storage Yard

5590 Division Dr. Fort Myers, FL 33905



Lee & Associates | Naples-Ft. Myers,  
6300 Techster Boulevard, Suite 1  
Ft. Myers, Florida, 33966

*The information contained herein was obtained from sources believed reliable, however, Lee & Associates makes no guarantees, warranties or representations as to the completeness or accuracy thereof. The presentation of this property is submitted subject to errors, omissions, change of price or conditions prior to sale or lease or withdrawal without notice.*

## YOUR LOCAL MARKET EXPERT