

FOR LEASE

TUSTIN CORPORATE PLAZA

1401 N. Tustin Avenue • Santa Ana, California

MEDICAL AND OFFICE SUITES AVAILABLE



Exclusively listed by:

ALLEN BASSO

Senior Vice President

License ID# 01298152

949.790.3130

abasso@leeirvine.com

BRIAN GARBUTT

Senior Vice President

License ID# 01215482

949.790.3166

bgarbutt@leeirvine.com

ERIC DARNELL

Senior Associate

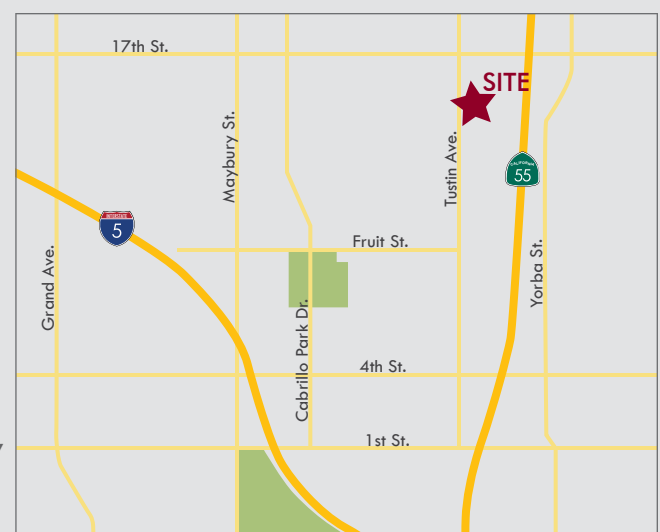
License ID# 01888743

949.790.3157

edarnell@leeirvine.com

PROPERTY FEATURES

- Medical and office suites available
- 3-story medical/office building
- Easy access and convenient parking
- Free surface parking (reserved parking available upon request)
- Professionally managed
- Ideally suited for therapists, law firms, doctors and accountants
- Centrally located near restaurants, banks and major freeways



FOR LEASE

TUSTIN CORPORATE PLAZA

1401 N. Tustin Avenue • Santa Ana, California

MEDICAL AND OFFICE SUITES AVAILABLE



AVAILABILITY

Suite	Type	Sq. Ft.	Lease Rate	Description
105	Office	2,393	\$2.00 FSG	5 offices, large open area and 2 entrances into suite.
155	Office	2,007	\$2.00 FSG	Large reception/waiting area, 5 offices, storage/data area and open area.
225/230*	Office	5,750	\$2.00 FSG	Waiting area, reception, large open area, large conference room, small conference room, 16 offices, storage/data room, kitchen, 2 restrooms and 6 entrances into suite.
240*	Office	1,429	\$2.00 FSG	4 offices, large conference room and kitchen.
250*	Office	3,027	\$2.00 FSG	7 offices, 2 storage rooms, waiting area and kitchen.
260*	Office	1,298	\$2.00 FSG	Call for details.
265*	Office	1,922	\$2.00 FSG	5 offices, conference room, storage room, data room, large open area and waiting area.
270*	Medical	2,159	\$2.30 FSG	5 exam rooms, reception, waiting area, doctor's office and private office/storage room.
300	Office	3,076	\$2.00 FSG	Call for details.
305	Office	1,355 SF	\$2.00 FSG	4 private offices.
330	Medical	1,561	\$2.30 FSG	Waiting area, reception, 2 offices, 1 exam room and open area.
340	Medical	2,569	\$2.30 FSG	Fully built out dental space.

*2nd Floor can be combined for up to 15,585 SF.

Exclusively listed by:

ALLEN BASSO

Senior Vice President
License ID# 01298152
949.790.3130
abasso@leeirvine.com

BRIAN GARBUTT

Senior Vice President
License ID# 01215482
949.790.3166
bgarbutt@leeirvine.com

ERIC DARNELL

Senior Associate
License ID# 01888743
949.790.3157
edarnell@leeirvine.com

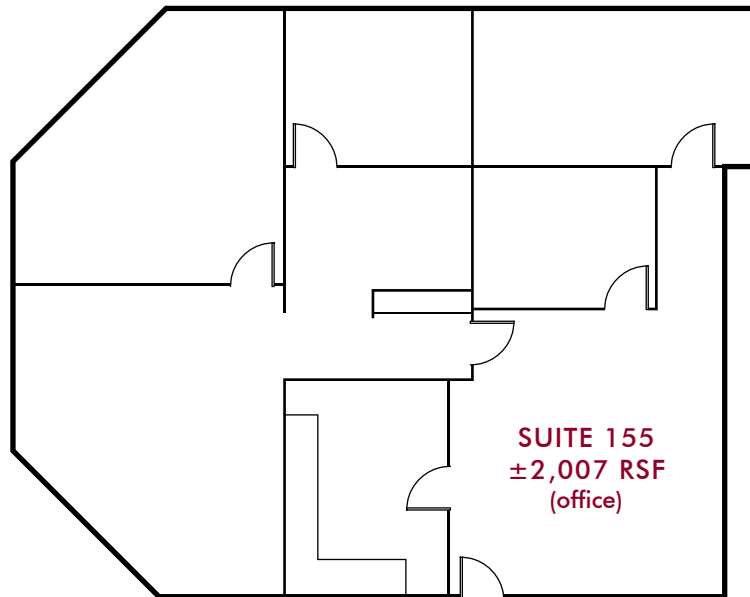
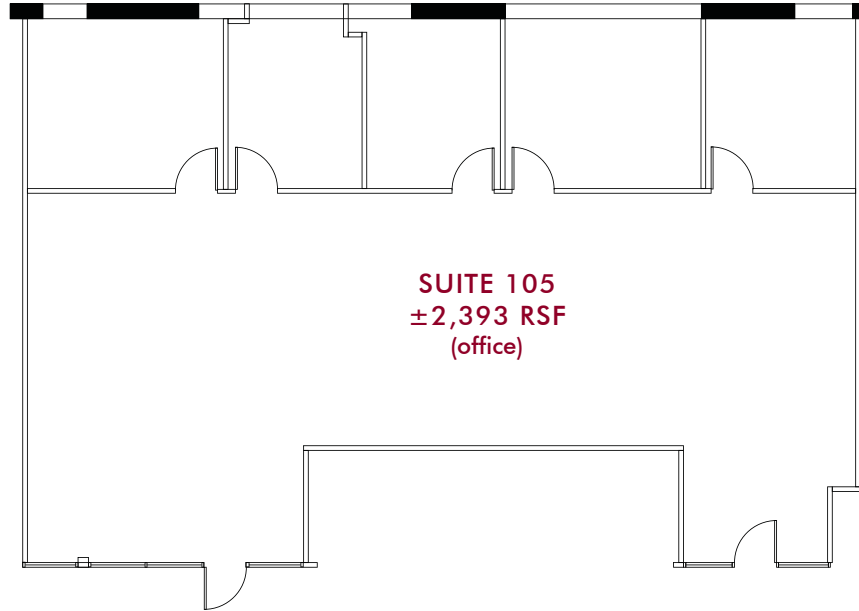


FOR LEASE

TUSTIN CORPORATE PLAZA

1401 N. Tustin Avenue • Santa Ana, California

MEDICAL AND OFFICE SUITES AVAILABLE



Exclusively listed by:

ALLEN BASSO
Senior Vice President
License ID# 01298152
949.790.3130
abasso@lee-associates.com

BRIAN GARBUTT
Senior Vice President
License ID# 01215482
949.790.3166
bgarbutt@lee-associates.com

ERIC DARNELL
Senior Associate
License ID# 01888743
949.790.3157
edarnell@lee-associates.com

 **LEE &
ASSOCIATES**[®]
COMMERCIAL REAL ESTATE SERVICES

GARBUTT | BASSO | PHAM | DARNELL | CEMO | LY

No warranty or representation is made to the accuracy of the foregoing information. Terms of sale or lease and availability are subject to change or withdrawal without notice.

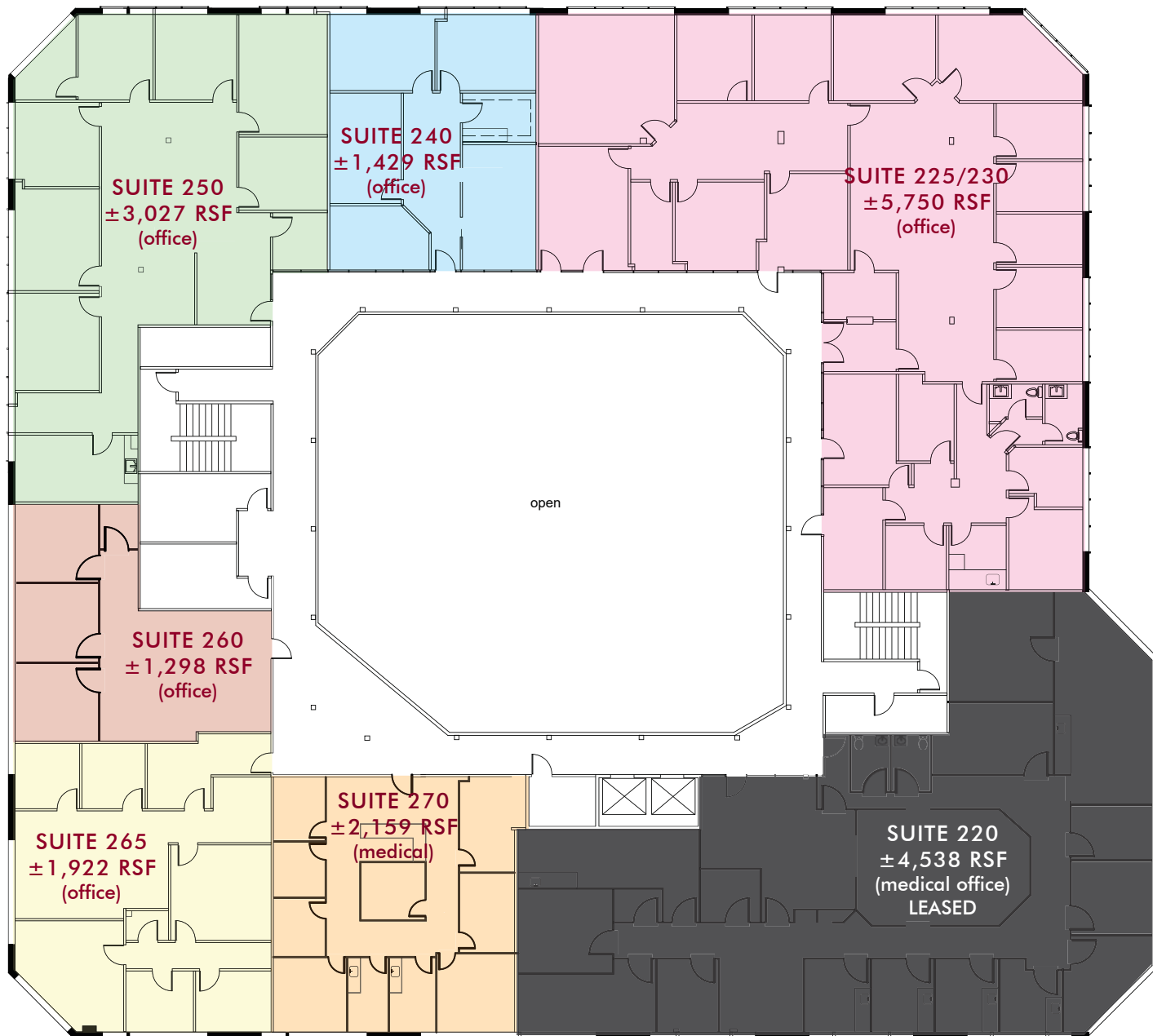
 **W PROPERTY GROUP**
MAXIMIZING PROPERTY VALUES[™]

FOR LEASE

TUSTIN CORPORATE PLAZA

1401 N. Tustin Avenue • Santa Ana, California

MEDICAL AND OFFICE SUITES AVAILABLE



*2nd Floor can be combined for up to 13,426 SF.

Exclusively listed by:

ALLEN BASSO
Senior Vice President
License ID# 01298152
949.790.3130
abasso@leeirvine.com

BRIAN GARbutt
Senior Vice President
License ID# 01215482
949.790.3166
bgarbutt@leeirvine.com

ERIC DARNELL
Senior Associate
License ID# 01888743
949.790.3157
edarnell@leeirvine.com



GARBUTT | BASSO | PHAM | DARNELL | LY | CEMO

No warranty or representation is made to the accuracy of the foregoing information. Terms of sale or lease and availability are subject to change or withdrawal without notice.

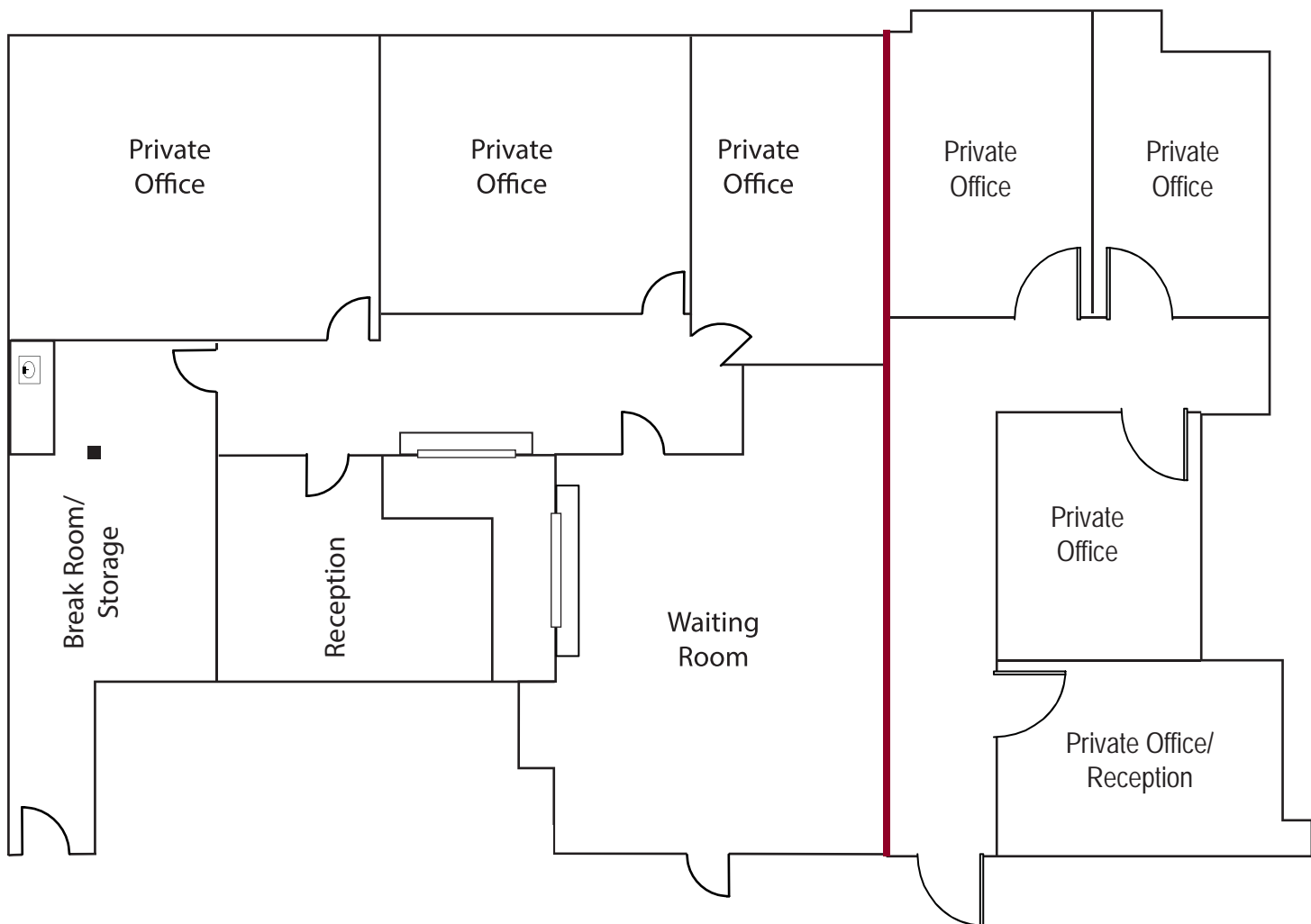


FOR LEASE

TUSTIN CORPORATE PLAZA

1401 N. Tustin Avenue • Santa Ana, California

MEDICAL AND OFFICE SUITES AVAILABLE



SUITE 300
±3,076 RSF
(office)

SUITE 305
±1,355 RSF
(office)

Exclusively listed by:

ALLEN BASSO
Senior Vice President
License ID# 01298152
949.790.3130
abasso@leeirvine.com

BRIAN GARBUTT
Senior Vice President
License ID# 01215482
949.790.3166
bgarbutt@leeirvine.com

ERIC DARNELL
Senior Associate
License ID# 01888743
949.790.3157
edarnell@leeirvine.com

 **LEE &
ASSOCIATES®**
COMMERCIAL REAL ESTATE SERVICES

GARBUTT | BASSO | PHAM | DARNELL | LY | CEMO

No warranty or representation is made to the accuracy of the foregoing information. Terms of sale or lease and availability are subject to change or withdrawal without notice.

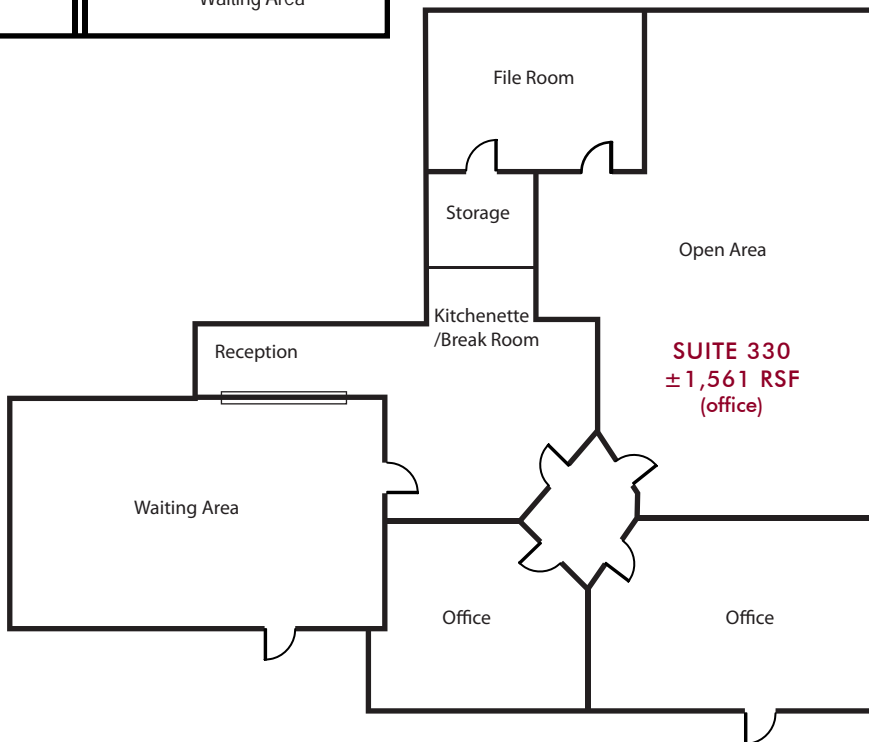
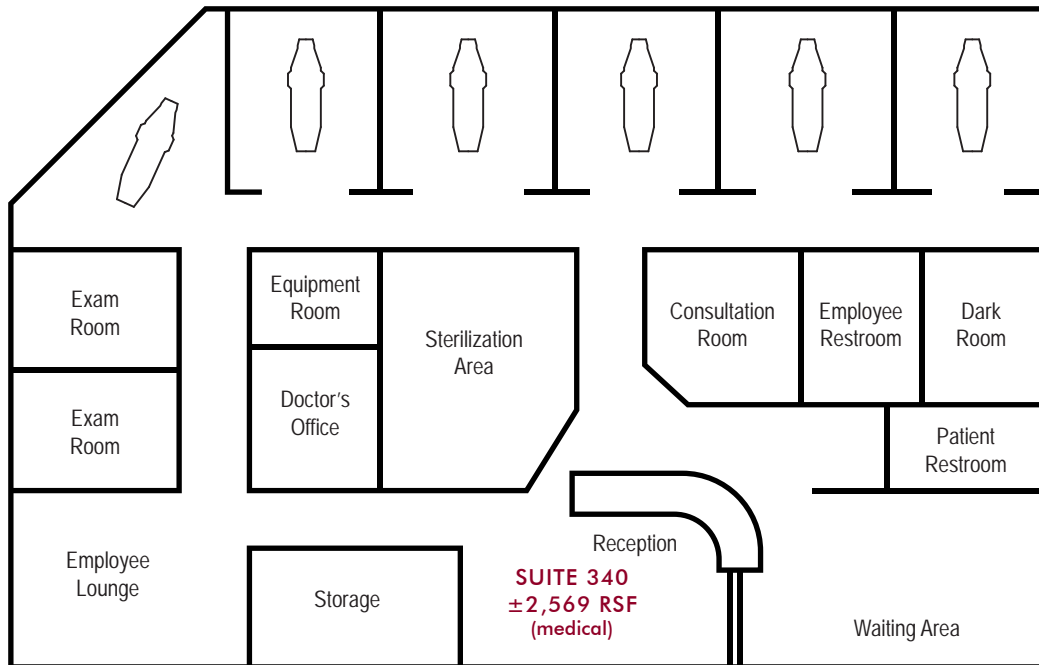
 **PROPERTY GROUP**
MAXIMIZING PROPERTY VALUES™

FOR LEASE

TUSTIN CORPORATE PLAZA

1401 N. Tustin Avenue • Santa Ana, California

MEDICAL AND OFFICE SUITES AVAILABLE



Exclusively listed by:

ALLEN BASSO
Senior Vice President
License ID# 01298152
949.790.3130
abasso@leeirvine.com

BRIAN GARBUTT
Senior Vice President
License ID# 01215482
949.790.3166
bgarbutt@leeirvine.com

ERIC DARNELL
Senior Associate
License ID# 01888743
949.790.3157
edarnell@leeirvine.com



GARBUTT | BASSO | PHAM | DARNELL | LY | CEMO

No warranty or representation is made to the accuracy of the foregoing information. Terms of sale or lease and availability are subject to change or withdrawal without notice.

