

INDUSTRIAL EQUITIES L.L.P.
Development and Investments

TEL 612 332 0139

321 First Avenue North, Minneapolis, Minnesota 55401

FAX 612 332 0241

LAKEVIEW BUSINESS CAMPUS IV
601 Campus Drive, New Brighton, Minnesota
VACANCY DATA SHEET



TOTAL BUILDING SIZE:	87,757 square foot office/warehouse building
TOTAL AVAILABLE:	20,798 square foot space available * Landlord will B.T.S. office * Available 7/1/2019
LOADING:	Four (4) dock doors with levelers Two (2) 12'x14' drive-ins with floor drains
AMENITIES:	* Floor to ceiling one-way ribbon glass * Excellent office/warehouse * Heavy Parking, large truck court * Immediate access to Interstate 35W, 280, and 36 * Flammable waste trap at drive-in
CLEAR HEIGHT:	24' clear
CAM/TAX:	\$ 3.69 per square foot CAM/taxes (2018 estimate)

For more information, please call:

John N. Allen

(612) 332-1122 – direct

(612) 845-3200 – cell

INDUSTRIAL EQUITIES L.L.P.
Development and Investments

TEL 612 332 0139

321 First Avenue North, Minneapolis, Minnesota 55401

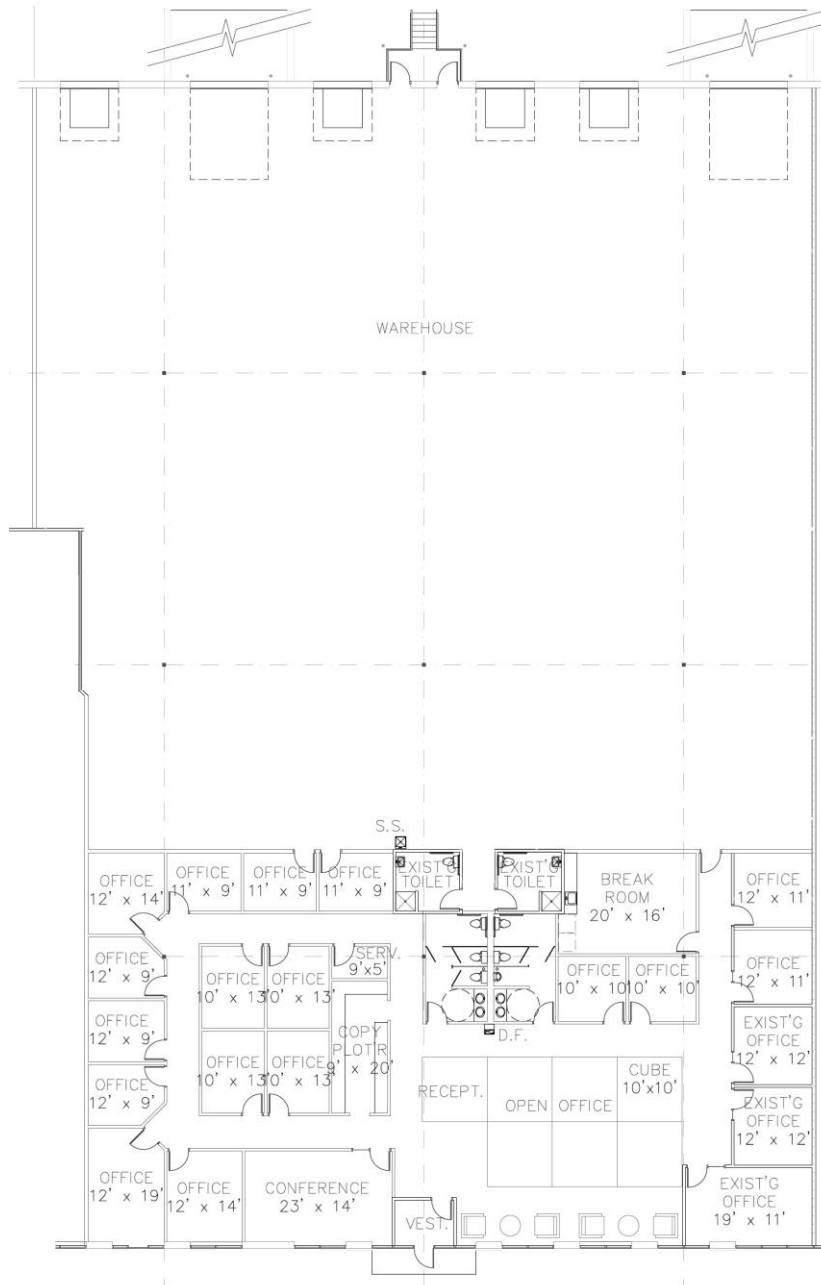
FAX 612 332 0241

LAKEVIEW BUSINESS CAMPUS IV

601 Campus Drive, New Brighton, Minnesota

20,798 Square Foot Vacancy

(6,893sf office, 13,843sf warehouse, 62sf common area)



For more information, please call:

John N. Allen

(612) 332-1122 – direct

(612) 845-3200 – cell

INDUSTRIAL EQUITIES L.L.P.
Development and Investments

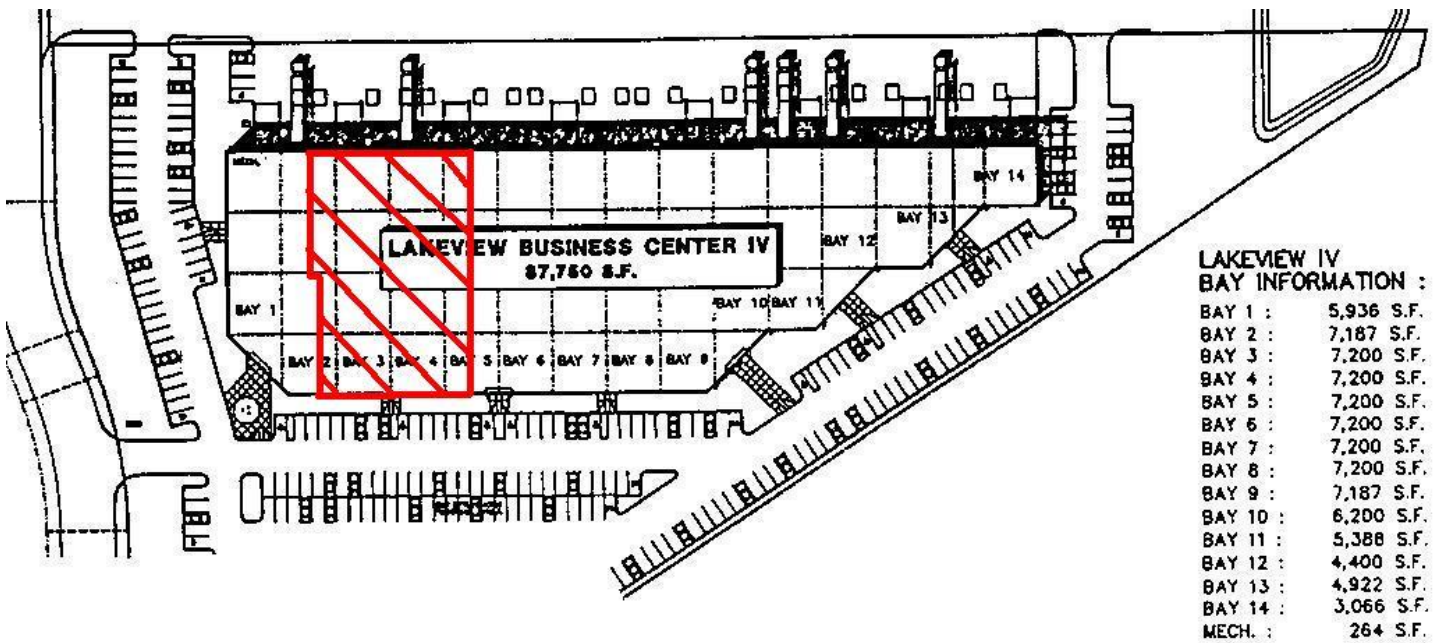
TEL 612 332 0139

321 First Avenue North, Minneapolis, Minnesota 55401

FAX 612 332 0241

LAKEVIEW BUSINESS CAMPUS IV
601 Campus Drive, New Brighton, Minnesota

SITE PLAN



For more information, please call:

John N. Allen

(612) 332-1122 – direct

(612) 845-3200 – cell

INDUSTRIAL EQUITIES L.L.P.
Development and Investments

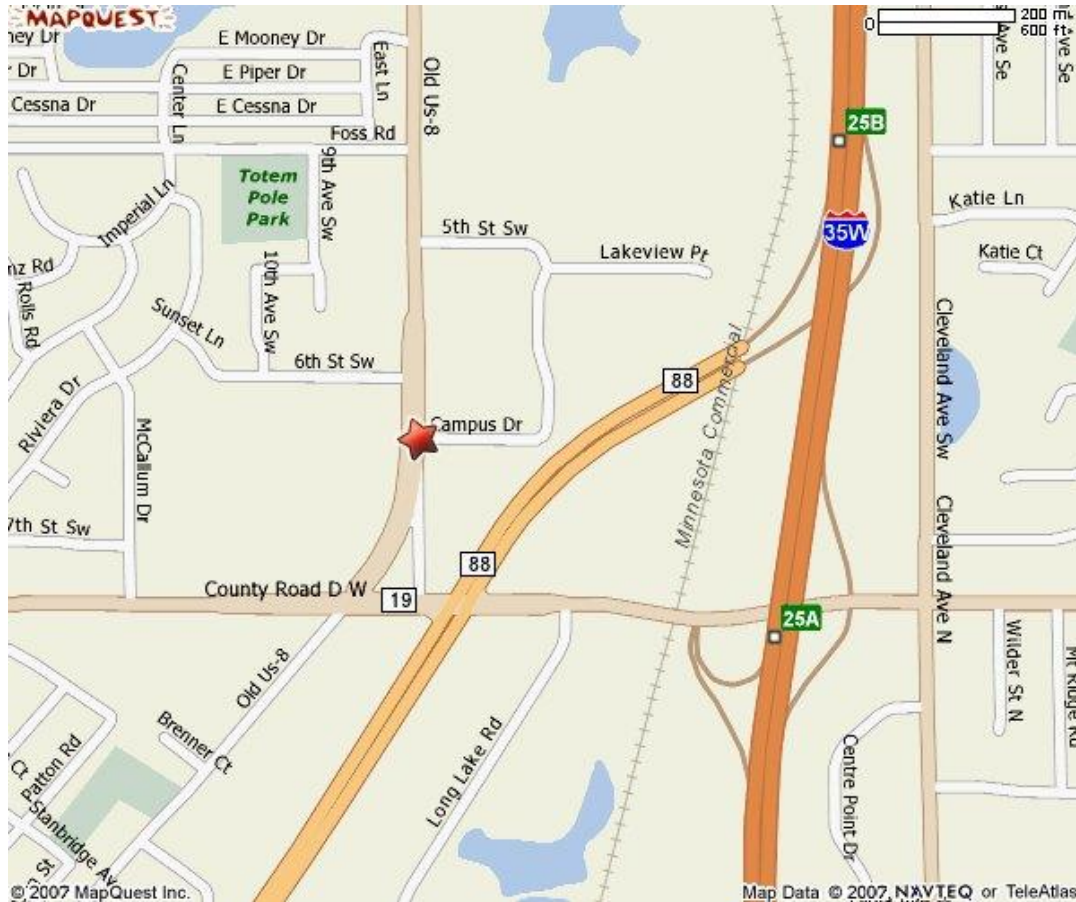
TEL 612 332 0139

321 First Avenue North, Minneapolis, Minnesota 55401

FAX 612 332 0241

LAKEVIEW BUSINESS CAMPUS IV
601 Campus Drive, New Brighton, Minnesota

LOCATION MAP



For more information, please call:

John N. Allen

(612) 332-1122 – direct

(612) 845-3200 – cell