



FOR LEASE

150 CORPORATE CENTER DRIVE
CAMP HILL, PA

NOW PROFESSIONALLY OWNED AND
MANAGED BY LINLO PROPERTIES

948 SF CLASS A OFFICE SPACE



PROPERTY FEATURES

- 39,401 SF building total on 1 acre site
- One suite remaining – 948 SF
- Class A Office in campus setting
- Masonry construction with ribbon glass
- Conferencing facility and property manager on-site
- Parking ratio 5.00/1,000 SF
- Half a mile from US Routes 11 & 15, with close access to I-83, PA Turnpike (I-76) and I-81
- Less than 3 miles to Downtown Harrisburg and 20 minutes to Harrisburg International Airport



For more information, please contact:

Jason C. Sourbeer
Director
+1 717 231 7451
jason.sourbeer@cushwake.com

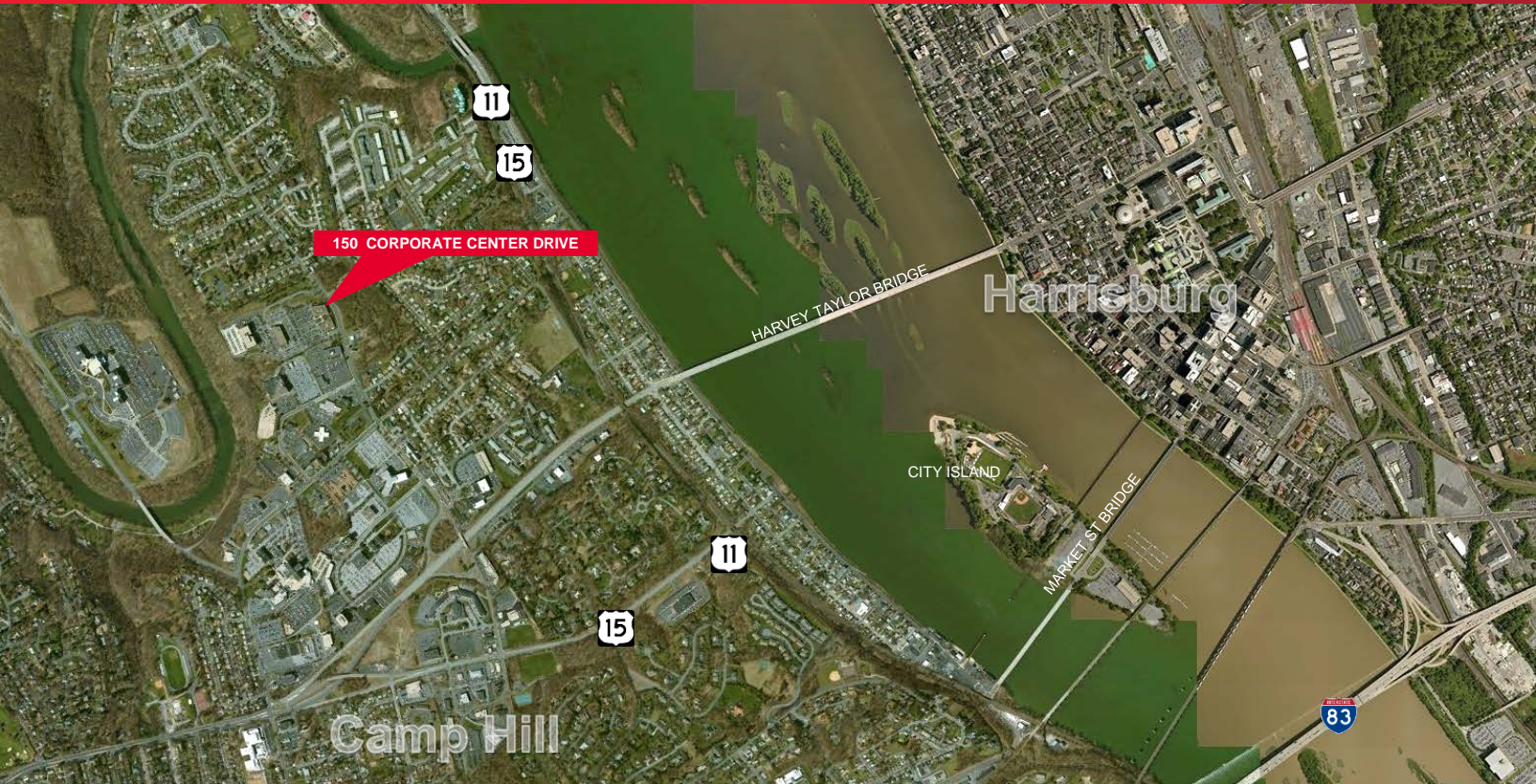
Cushman & Wakefield of Pennsylvania, LLC
4507 North Front Street, Suite 203
Harrisburg, PA 17110 | USA
+1 717 231 7290

cushmanwakefield.com



FOR LEASE

150 CORPORATE CENTER DRIVE CAMP HILL, PA



PROPERTY DATA

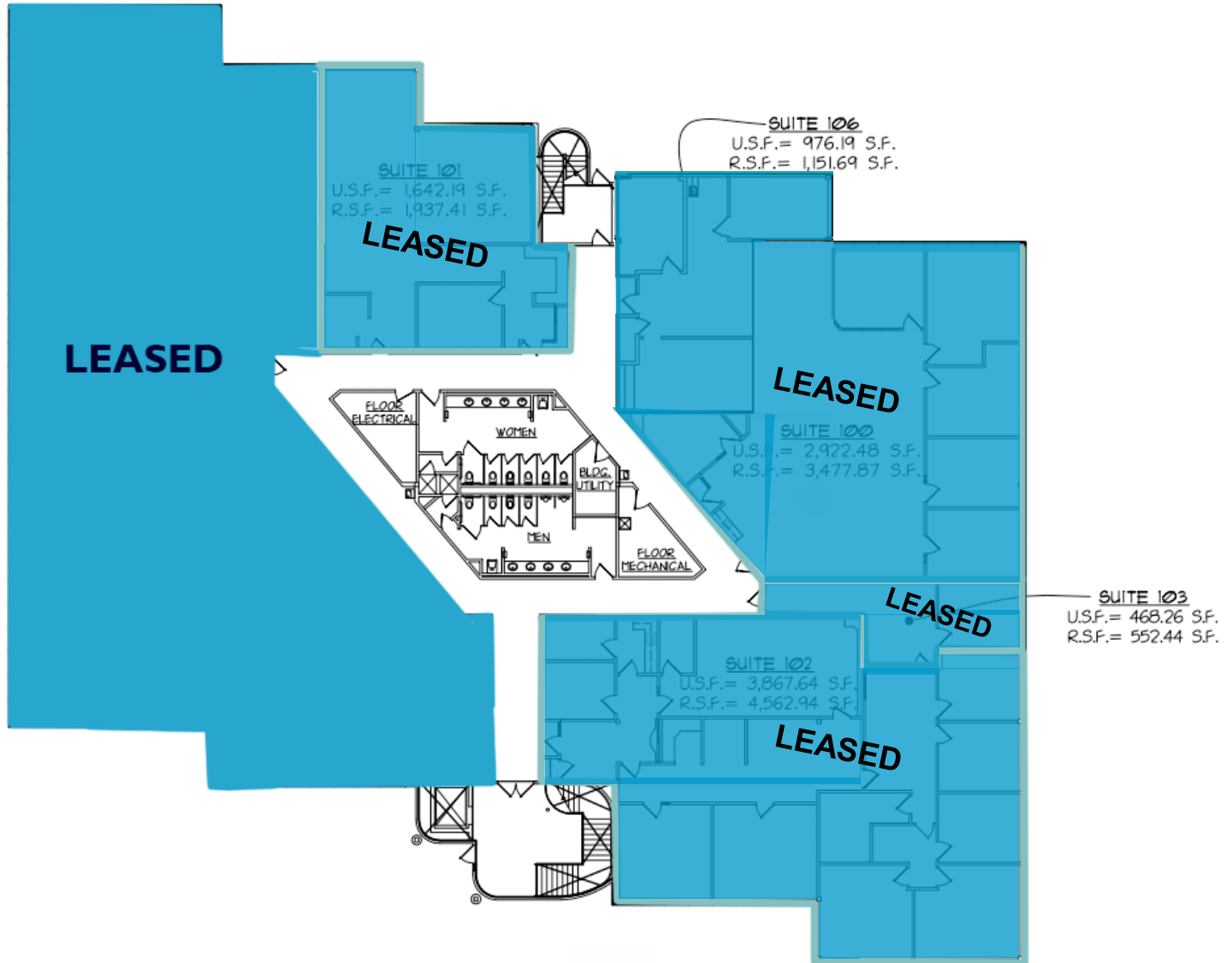
ADDRESS:	150 CORPORATE CENTER DRIVE CAMP HILL, PA 17011	CEILING HEIGHT/TYPE:	9' / 2'X4' ACOUSTICAL TILE
COUNTY:	CUMBERLAND COUNTY	FLOOR TYPE:	CONCRETE WITH FLOOR COVERINGS
MUNICIPALITY:	EAST PENNSBORO TWP	POWER:	1,000 AMPS, 480 VOLTS
TAX PARCEL NUMBER:	18-1304-132B	LIGHTING:	PARABOLIC
PARCEL SIZE:	5.7 ACRES	WATER:	PUBLIC WATER
TOPOGRAPHY:	GRADED	SEWER:	PUBLIC SEWER
ZONING:	AO (APARTMENT/OFFICE)	HVAC:	ELECTRIC HEAT PUMP
ROAD FRONTAGE:	LOCATED IN BUSINESS PARK	SPRINKLERS:	NONE
TOTAL BUILDING SF:	39,401 SF	SECURITY:	NONE
AVAILABLE SF:	SUITE 204 - 948 SF	PARKING:	133 SURFACE SPACES; RATIO OF 5.00/1,000 SF IN COMMON
YEAR BUILT:	1988	RESTROOMS:	IN COMMON
CLASS:	CLASS A	BASEMENT:	NONE
CONSTRUCTION:	MASONRY WITH RIBBON GLASS	SIGNAGE:	SUITE, LOBBY AND MONUMENT
NUMBER OF FLOORS:	TWO	RENTAL RATE:	\$19.00/SF GROSS
ELEVATORS:	ONE	RENT EXCLUDES:	JANITORIAL



FOR LEASE

150 CORPORATE CENTER DRIVE CAMP HILL, PA

FIRST FLOOR

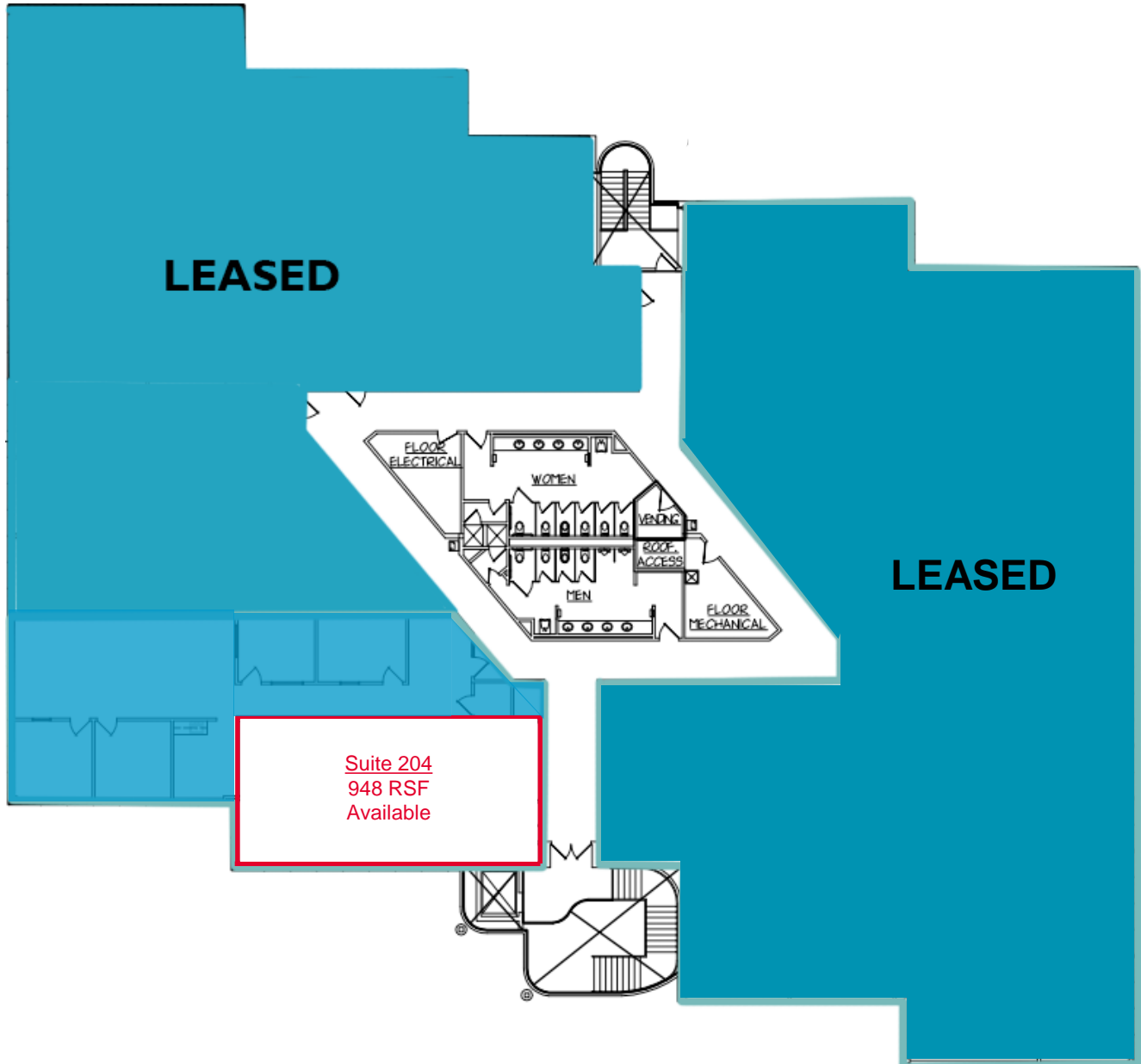




FOR LEASE

150 CORPORATE CENTER DRIVE
CAMP HILL, PA

SECOND FLOOR





FOR LEASE

150 CORPORATE CENTER DRIVE
CAMP HILL, PA

SECOND FLOOR – SUITE 204

