

111 58th Street

Sunset Park, Brooklyn, NY

Location: Between 1st Ave & 2nd Ave

Ground Floor: 500 SF (Lobby)

Second Floor: 17,500 SF

Frontage: 175 FT on 1st Ave
100 FT on 58th Street

Ceiling Height: 16 FT - 35 FT

Zoning: M3-1

Highlights:

- Dedicated lobby entrance with private elevator and stairs to second floor
- Fire sprinkler system installed
- Directly across from NYC Ferry landing and Brooklyn Army Terminal
- Located in the center of NYU Langone Medical Center development



Neighboring Tenants:



CONTACT LEASING TEAM



Harrison Baliksy
516-672-4493
hb@olmstedre.com

Keat Chew
347-571-3338
kc@olmstedre.com

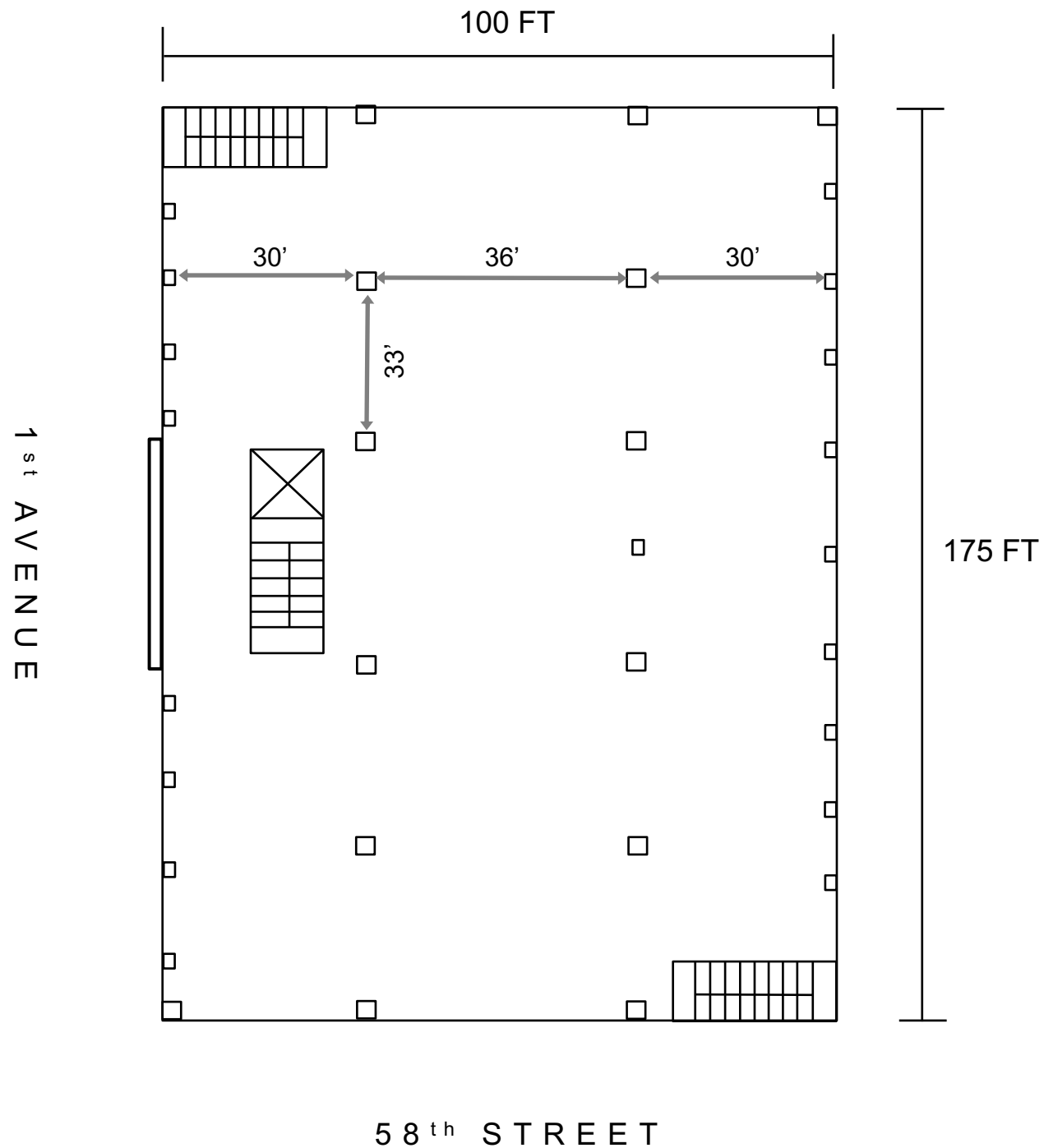
Aaron Lee
469-442-9897
al@olmstedre.com



111 58th Street

Sunset Park, Brooklyn, NY

Second Floor

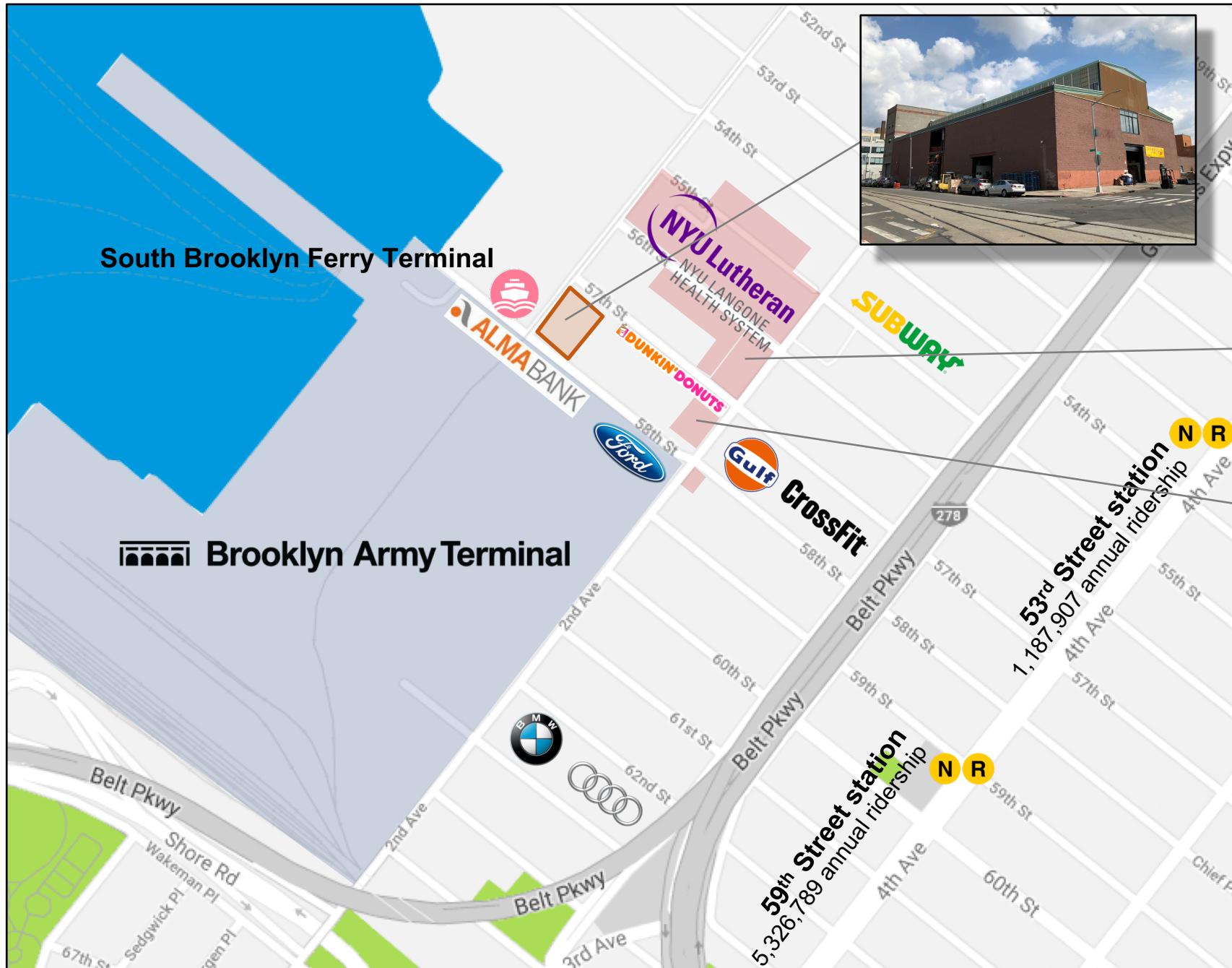




111 58th Street


Sunset Park, Brooklyn, NY

Neighborhood Map



In 2015, Lutheran Medical Center became affiliated with NYU Langone Medical Center and officially renamed **NYU Langone Hospital – Brooklyn**. Since the inception, NYU continued to expand its footprint in the neighborhood providing additional medical services to the community.

- **5610 Second Avenue** – Women’s health and pediatric care are provided at the 50,000 sf Sunset Park Family Health Center.
- **5718 Second Avenue** – a new 28,700 sf facility as a center for chemotherapy and radiation therapies.

 South Brooklyn Ferry Terminal is located directly across the street.

N R trains are located three blocks away at 59th Street station with 5,326,789 annual ridership. Another at 53rd Street station with 1,187,907 annual ridership.



111 58th Street

Sunset Park, Brooklyn, NY

Interior Photos

