

**132**  
**PRINCE**  
**STREET**

# ***PRIME SOHO RETAIL***

***BETWEEN WOOSTER STREET & WEST BROADWAY***



# 132

## PRINCE STREET

## SPACE SPECIFICATIONS & COMMENTS

### COMMENTS

- Located in the heart of Soho on one of Manhattan's premier shopping corridors.
- Formerly Preview.
- Prince Street is home to some of the most successful retailers in Soho.
- Expanded visibility — new full-height glass storefronts recently installed.
- Lower level can be selling.
- Space in turn-key condition with a beautiful existing installation.

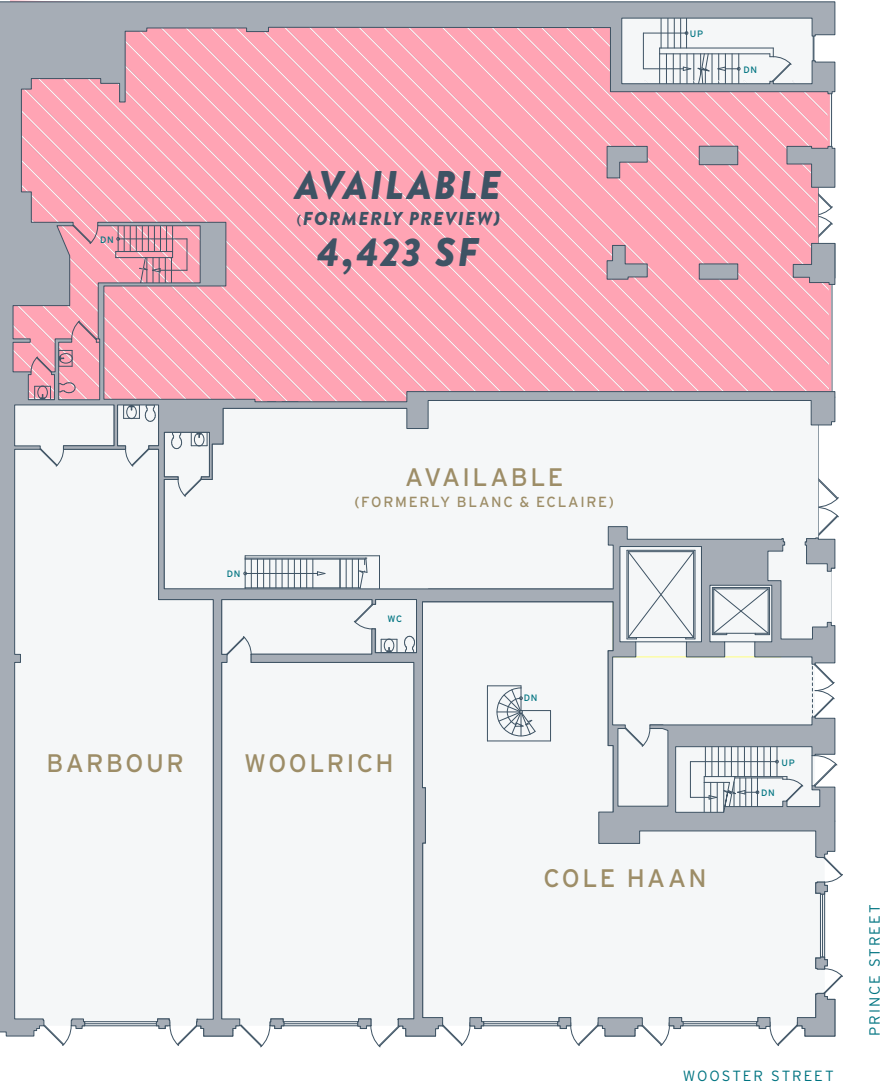
### SPACE SPECIFICATIONS

FLOOR	SPACE	CEILING HT.
GROUND FLOOR	4,423 SF	14 FT
LOWER LEVEL	3,719 SF	12 FT
TOTAL	8,142 SF	

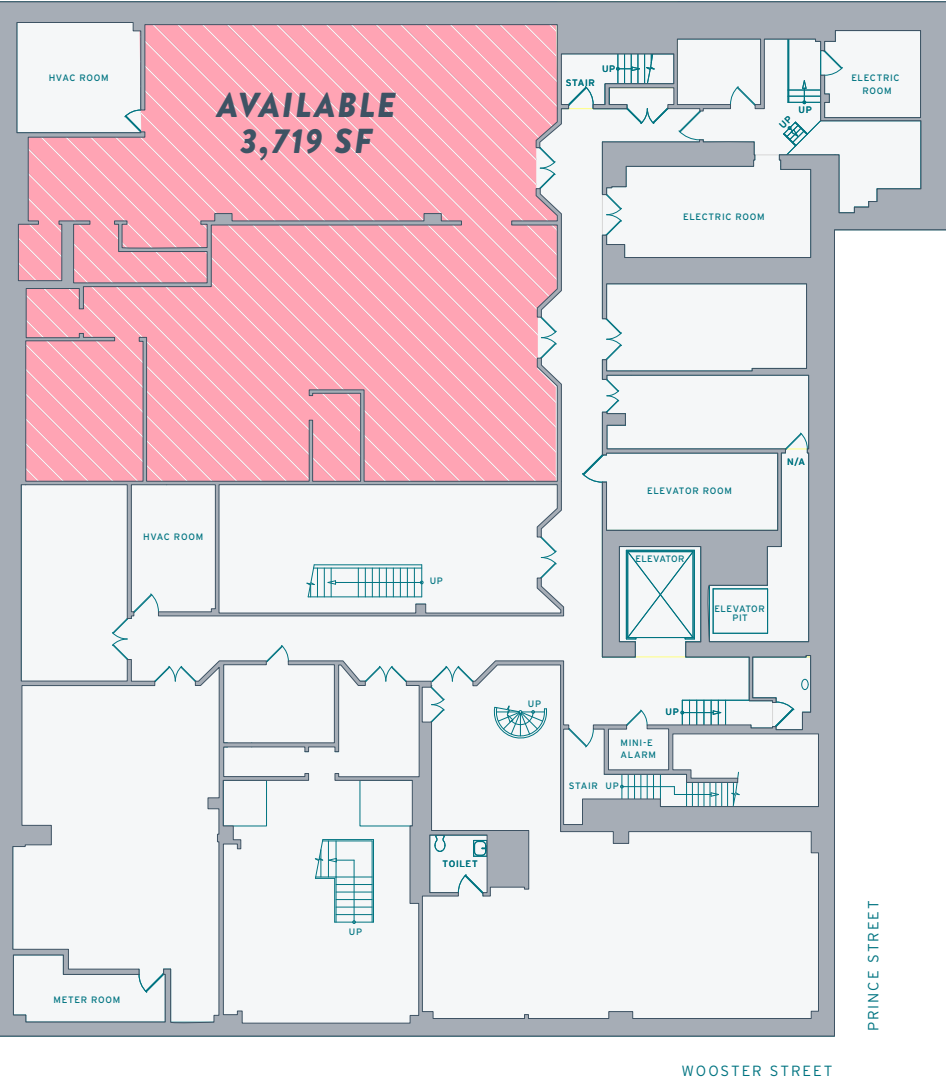
FRONTAGE	37 FEET
POSSESSION	IMMEDIATE
LEASE TYPE	DIRECT
ASKING RENT	UPON REQUEST

FLOORPLANS

GROUND FLOOR



LOWER LEVEL



COACH

JOHNNY WAS

LOUIS  
MEISEL  
GALLERY

UNTUCKit



FAHERTY

lululemon  athletica  
WOMEN

RALPH LAUREN



FARM

SCANLAN THEODORE

UNO de 50

FALCONERI

(THE MERCER) KITCHEN

AQUAZZURA

MONCLER



PRINCE STREET

WEST BROADWAY

COLE · HAAN

WOOLRICH

Barbour

FRENCH CONNECTION

132  
PRINCE  
STREET

WOOSTER STREET

ISSEY MIYAKE

NARS

Wolford

NIXON

Saje

JOHN HARDY

SLOWEAR

DAVID  
YURMAN

CAMPER

GREENE STREET

FENDI

TUMI

טומי טומי

INTERMIX

FANELLI  
CAFE

MERCER STREET

## NEIGHBORS

LULULEMON MEN'S / WOMEN'S

APPLE

COLE HAAN

WOOLRICH

BARBOUR

COACH

DAVID YURMAN

TUMI

MONCLER

INTERMIX

SLOWEAR



# **132 PRINCE STREET**

---

**Please contact us with retail leasing inquiries:**

---

**ALAN SCHMERZLER**

**212 841 5930**

**ALAN.SCHMERZLER@CUSHWAKE.COM**

**STEVEN SOUTENDIJK**

**212 713 6845**

**STEVEN.SOUTENDIJK@CUSHWAKE.COM**

**CHRISTOPHER SCHWART**

**212 841 5019**

**CHRIS.SCHWART@CUSHWAKE.COM**

---