

COMMERCIAL FOR LEASE

WEST POINT BUILDING A

15505 Ruggles St. • Omaha, Nebraska

11301 Davenport Street
Omaha, NE 68154
402.330.8000
www.investorsomaha.com

**INVESTORS
REALTY INC.**

Rent Special \$3.00 off psf NNN 1st Year of 5 year deal

\$14.50 psf NNN | 2,031 - 4,573 SF



HIGHLIGHTS

- Anchored by Tanners Bar & Grill, Anytime Fitness and other long term tenants
- 51,340 cars drive past this location every day
- Excellent visibility to 156th Street
- Large monument sign with electronic display
- Former Credit Union space with drive thru lanes available

AGENTS

BRIAN KUEHL
bkuehl@investorsomaha.com

(402) 778-7537



**CERTIFIED
PROPERTY
MANAGER®**

*INDIVIDUAL MEMBERS

Information presented is deemed reliable and is subject to change.
Investors Realty, Inc. makes no warranties or guarantees regarding this information.

COMMERCIAL FOR LEASE

11301 Davenport Street
Omaha, NE 68154
402.330.8000
www.investorsomaha.com

**INVESTORS
REALTY INC.**

West Point Retail Building A • 15505 Ruggles Street • Omaha, NE (156th & Ruggles)



\$14.50 PSF NNN

Anchored by Tanners Bar & Grill, Anytime Fitness and several other long term tenants. Located on the NEC of 156th & Ruggles, 1 block North of Maple Street.

BUILDING DATA

Building SF **20,234**
Avail SF **2,542**
Min SF **2,542**
Max SF **2,542**
Year Built **2003**
Min Ceiling Ht **14'**
Fire Sprinkler **Yes**
HVAC **GFA**
Restrooms **Building Standard**
Power **230 3 phase**
O.H. Doors **None**
Elevator **No**
Remarks

SITE DATA

Zoning **Mixed Use**
Traffic Ct **37,050 cars/day (2014)***
Parking **5.19 per 1,000 sq. ft.**
Remarks
***Taken at 156th & W Maple Rd**

COVENANTS/RESTRICTIONS

Easements **Those of Record**
Covenants **Those of Record**
Restrictions **Cross parking easements**

LEASE TERMS

<u>Services</u>	<u>PD BY</u>	<u>EST PSF</u>
Gas	Tenant	
Sewer/Water	Tenant	
Electric	Tenant	
Janitorial	Tenant	
HVAC Maint	Tenant	
R.E. Taxes	Tenant	\$3.00 psf
Insurance	Tenant	\$0.49 psf
C.A.M	Tenant	\$2.64 psf
Cost To Tenants		\$6.13 psf (2018 est)
Finish Allowance		Negotiable
Rent Escalator		3% annually
Lease Term		5 years
Lease Form		In House
Will Sell		No
Remarks		

AGENTS

Brian Kuehl 402.778.7537

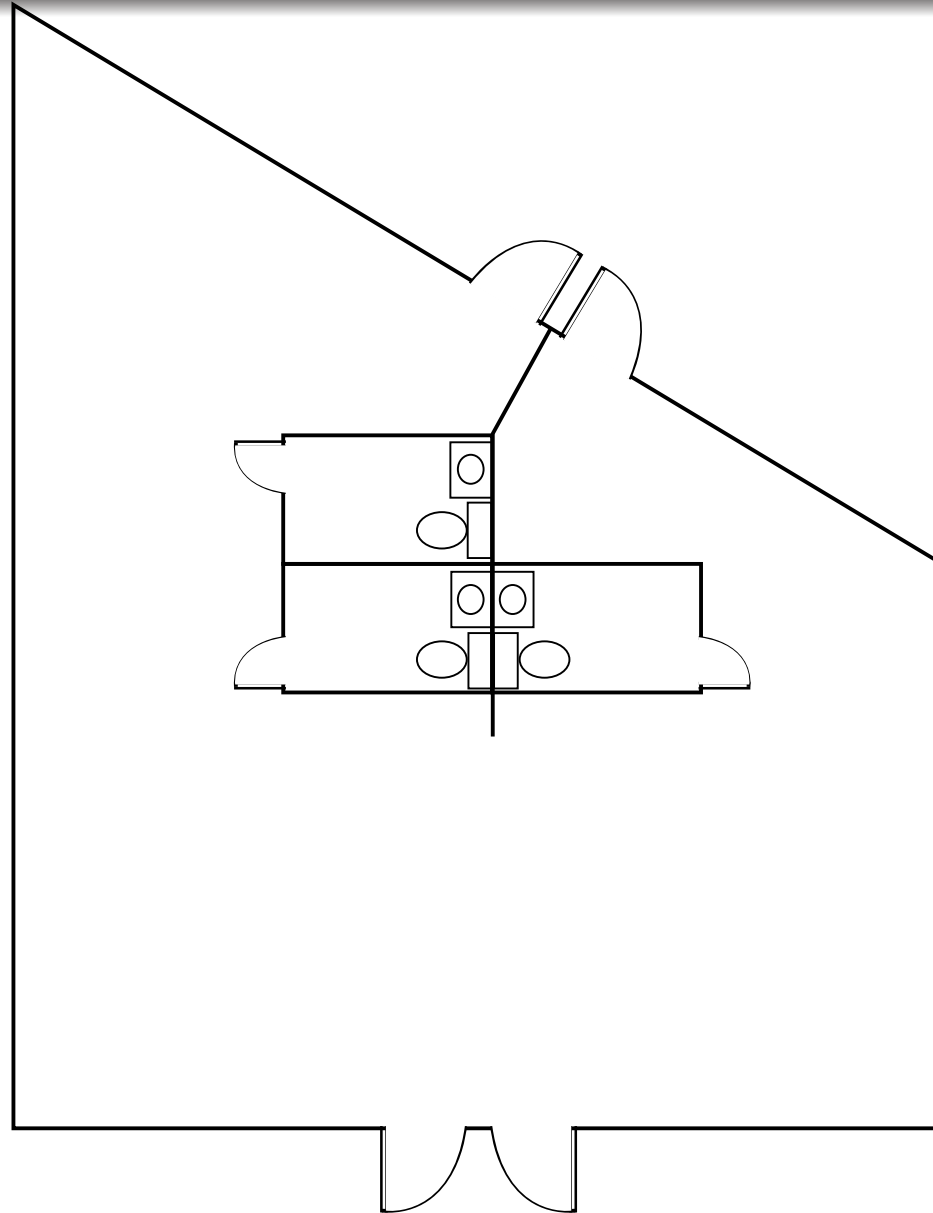
UNIT	SIZE	RATE	BASE RENT	ESTIMATED TOTAL RENT	AVAILABLE
109	2,542 sf	\$14.50 psf	\$3,071.58	\$4,370.12	Now

109 - Rent Special - 1st year **\$11.50 psf** **\$2,436.08** **\$3,734.62**

FLOOR PLAN - #109

West Point Building A • 15505 Ruggles Street • Omaha, Nebraska

11301 Davenport Street
Omaha, NE 68154
402.330.8000
www.investorsomaha.com



SITE PLAN

West Point Building A • 15505 Ruggles Street • Omaha, Nebraska

11301 Davenport Street
Omaha, NE 68154
402.330.8000
www.investorsomaha.com

**INVESTORS
REALTY INC.**



EXTENDED VIEW AERIAL

West Point Building A • 15505 Ruggles Street • Omaha, Nebraska

11301 Davenport Street
Omaha, NE 68154
402.330.8000
www.investorsomaha.com

**INVESTORS
REALTY INC.**



PROPERTY IMAGES

West Point Building A • 15505 Ruggles Street • Omaha, Nebraska

11301 Davenport Street
Omaha, NE 68154
402.330.8000
www.investorsomaha.com

**INVESTORS
REALTY INC.**



DEMOGRAPHICS

West Point Building A • 15505 Ruggles Street • Omaha, Nebraska

11301 Davenport Street
Omaha, NE 68154
402.330.8000
www.investorsomaha.com

**INVESTORS
REALTY INC.**

2016 DEMOGRAPHIC PROJECTION

	1 MILE	3 MILE	5 MILE
Population:	13,993	72,064	162,434
Avg. HH Income:	\$107,975	\$112,004	\$97,077
Total Households:	5,440	26,338	63,512



2021 DEMOGRAPHIC PROJECTION

	1 MILE	3 MILE	5 MILE
Population:	15,180	78,074	173,986
Avg. HH Income:	\$123,339	\$126,968	\$111,129
Total Households:	5,858	28,422	67,888

