

**AVISON
YOUNG**

NOW LEASING ±65,000 SF OFFICE SPACE



2359 | **GATEWAY OAKS DRIVE**
SACRAMENTO, CA

NATOMAS GATEWAY CORPORATE CENTER



For more information on this property, please contact exclusive agents:

Tom Aguer, CCIM SIOR

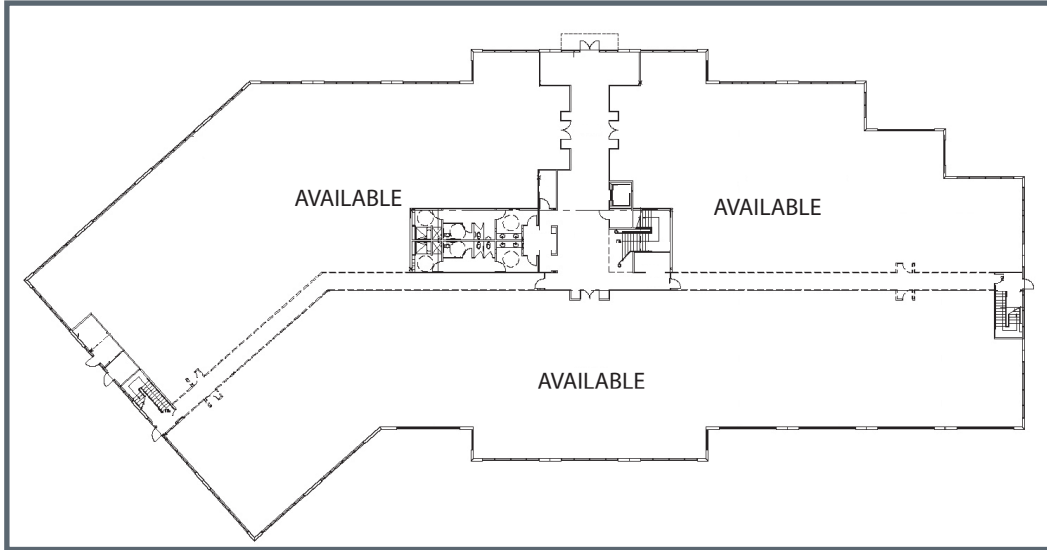
O: 916.563.7827 | F: 916.563.7554
tom.aguer@avisonyoung.com
CA DRE #00481113

Matt Havelock, CCIM SIOR

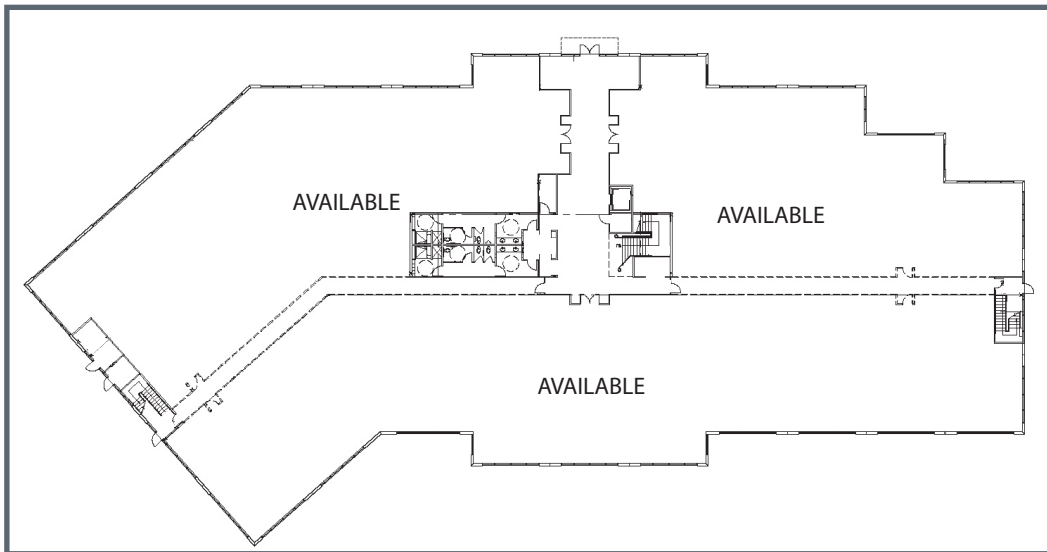
O: 916.563.7667 | F: 916.563.7554
matt.havelock@avisonyoung.com
CA DRE #00930194

HIGHLIGHTS

- Planned for LEED® Gold Certification
- Possible Availability for Occupancy Q4 2019
- Approximately ±65,000 RSF
- Parking: 4/1,000 SF
- Conveniently located immediately adjacent to Interstate 5
- Only five minutes from downtown Sacramento and the State Capitol
- Abundance of restaurants walking distance from the site and other restaurants within one mile.



FIRST FLOOR 32,774 SF Available



SECOND FLOOR 31,370 SF Available

HIGHLIGHTS

Within walking distance of a variety of restaurants, including:



Tom Aguer, CCIM SIOR
O: 916.563.7827 | F: 916.563.7554
tom.aguer@avisonyoung.com
CA DRE #00481113

Matt Havelock, CCIM SIOR
O: 916.563.7667 | F: 916.563.7554
matt.havelock@avisonyoung.com
CA DRE #00930194

NATOMAS GATEWAY CORPORATE CENTER

2359 GATEWAY OAKS DRIVE, SACRAMENTO, CA



2359 GATEWAY OAKS DRIVE



Tom Aguer, CCIM SIOR
O: 916.563.7827 | F: 916.563.7554
tom.aguer@avisonyoung.com
CA DRE #00481113

Matt Havelock, CCIM SIOR
O: 916.563.7667 | F: 916.563.7554
matt.havelock@avisonyoung.com
CA DRE #00930194

NATOMAS GATEWAY CORPORATE CENTER 2359 GATEWAY OAKS DRIVE, SACRAMENTO, CA

Partnership. Performance.