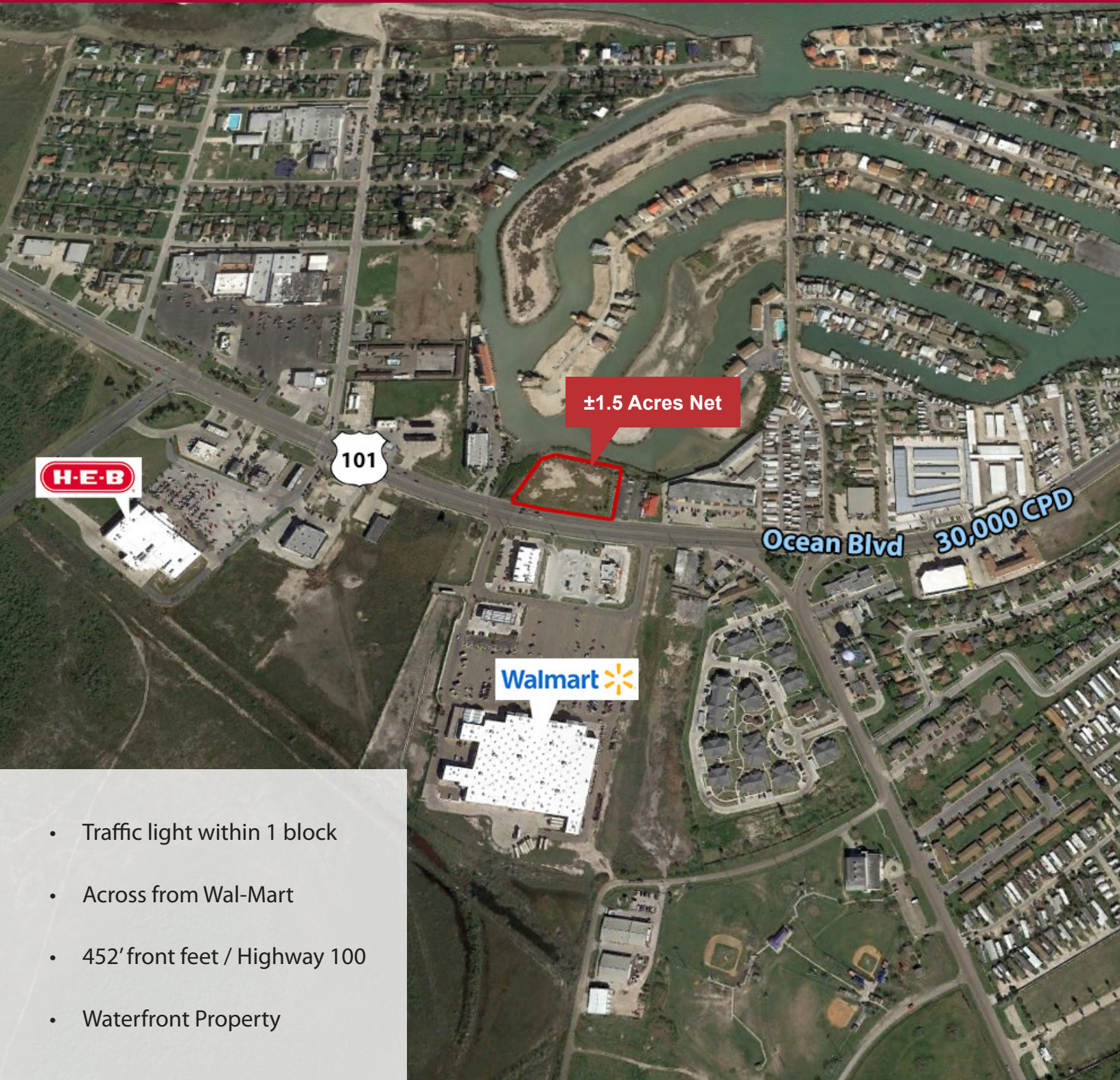


# WATERFRONT COMMERCIAL LOT

1404 HIGHWAY 100 - EAST OCEAN BLVD  
PORT ISABEL, TEXAS

±1.5 ACRES NET  
**\$899,000**



- Traffic light within 1 block
- Across from Wal-Mart
- 452' front feet / Highway 100
- Waterfront Property

FOR MORE  
INFORMATION  
PLEASE  
CONTACT

**Cindy Hopkins, CCIM**

Broker  
956 778 3255  
chopkins@ccim.net

**CHRE**  
Commercial Real Estate in the Rio Grande Valley





## IDEAL LOCATION FOR

- EMERGENCY CARE FACILITY
- QSR
- CAR WASH

## PROPERTY DETAILS

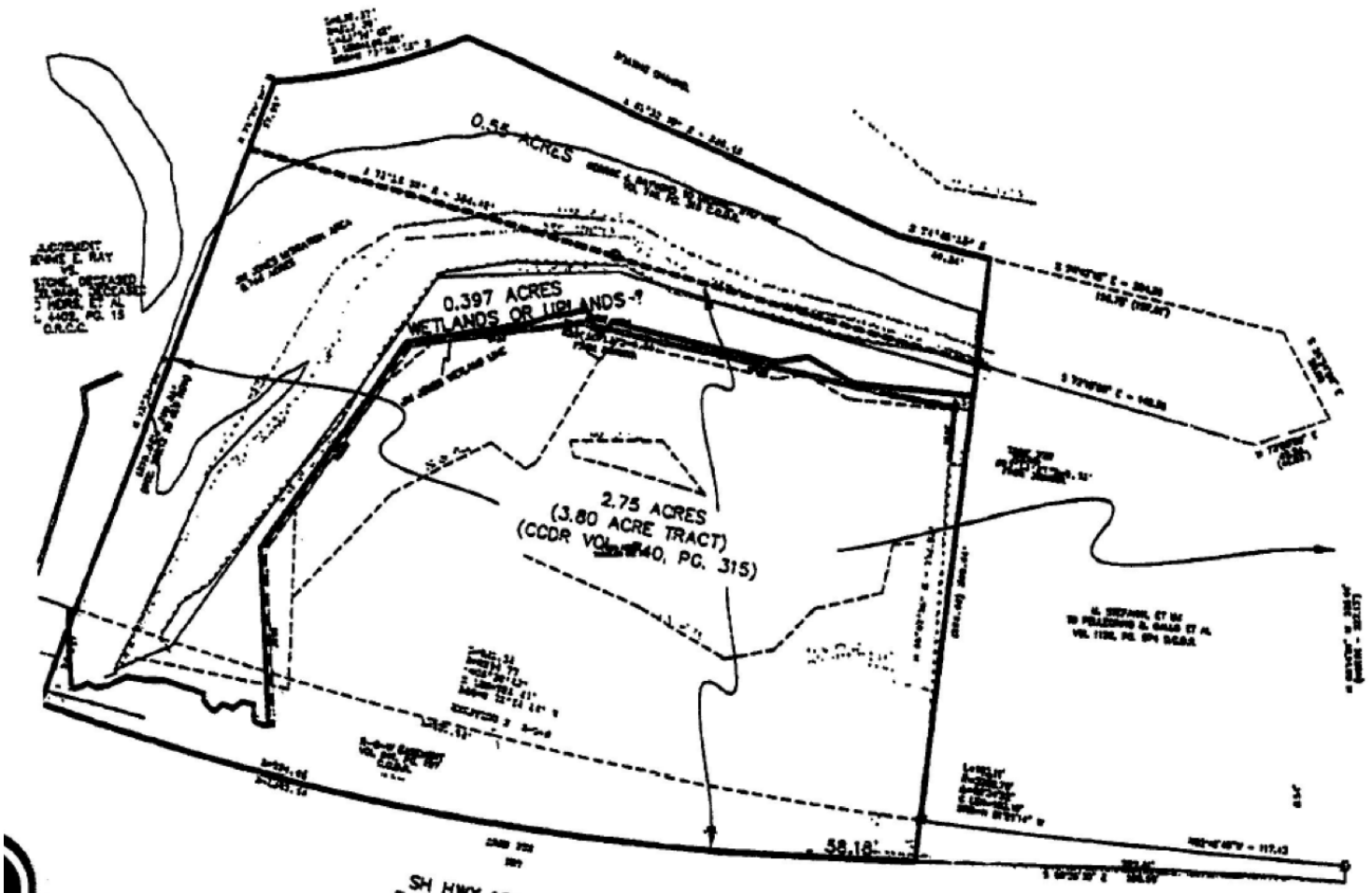
1 Tract of Land containing  $\pm 3.59$  Acres Gross,  $\pm 1.5$  Acres Net

### 2016 DEMOGRAPHICS (Drive Time)

	15 Min	20 Min	25 Min
Population	13,533	18,072	58,322
Avg. Household Income	\$69,865	\$63,898	\$52,080
Median Age	40.9	35.0	30.6



# PLAT MAP



FOR MORE  
INFORMATION  
PLEASE  
CONTACT

**Cindy Hopkins, CCIM**

Broker

956 778 3255

chopkins@ccim.net

**CHRE**  
Commercial Real Estate in the Rio Grande Valley

The information contained herein was obtained from sources deemed reliable; however, Retail Solutions makes no guaranties, warranties or representations to the completeness or accuracy thereof. The presentation of this real estate information is subject to errors; omissions; change of price; prior sale or lease; or withdrawal without notice. Retail Solutions, which provides real estate brokerage services, is a division of Reliance Retail, LLC, a Texas Limited liability company.



FOR MORE  
INFORMATION  
PLEASE  
CONTACT

**Cindy Hopkins, CCIM**  
Broker  
956 778 3255  
chopkins@ccim.net



The information contained herein was obtained from sources deemed reliable; however, Retail Solutions makes no guaranties, warranties or representations to the completeness or accuracy thereof. The presentation of this real estate information is subject to errors; omissions; change of price; prior sale or lease; or withdrawal without notice. Retail Solutions, which provides real estate brokerage services, is a division of Reliance Retail, LLC, a Texas Limited liability company.