

FOR LEASE

NEW JUNIOR ANCHOR, SHOPS SPACE AND PAD SITE

PLAZA 66

108 JUAN TABO BLVD, ALBUQUERQUE, NEW MEXICO 87123

RETAIL



AVAILABLE

- + 10,000 - 60,000± SF Junior Anchor
- + 1,200± - 11,700± SF Shops Space
- + Pad site available for ground lease or build-to-suit
- + Experienced retail developer to provide shell & TI allowance

FEATURES

- + Located at a signalized intersection at the NEC of Juan Tabo Blvd. and Central Ave.
- + Excellent traffic counts
28,010 VPD on Juan Tabo Blvd
24,230 VPD on Central Ave
- + ±160' building depth (depth varies throughout building)
- + ±528' total building length

CONTACT US

Jim Dountas

First Vice President
+1 505 837 4955
jim.dountas@cbre.com

Lia Armstrong, CCIM

First Vice President
+1 505 837 4951
lia.armstrong@cbre.com

AREA RETAILERS INCLUDE:



FOR LEASE

NEW JUNIOR ANCHOR, SHOPS SPACE AND PAD SITE

PLAZA 66

108 JUAN TABO BLVD, ALBUQUERQUE, NEW MEXICO 87123

RETAIL



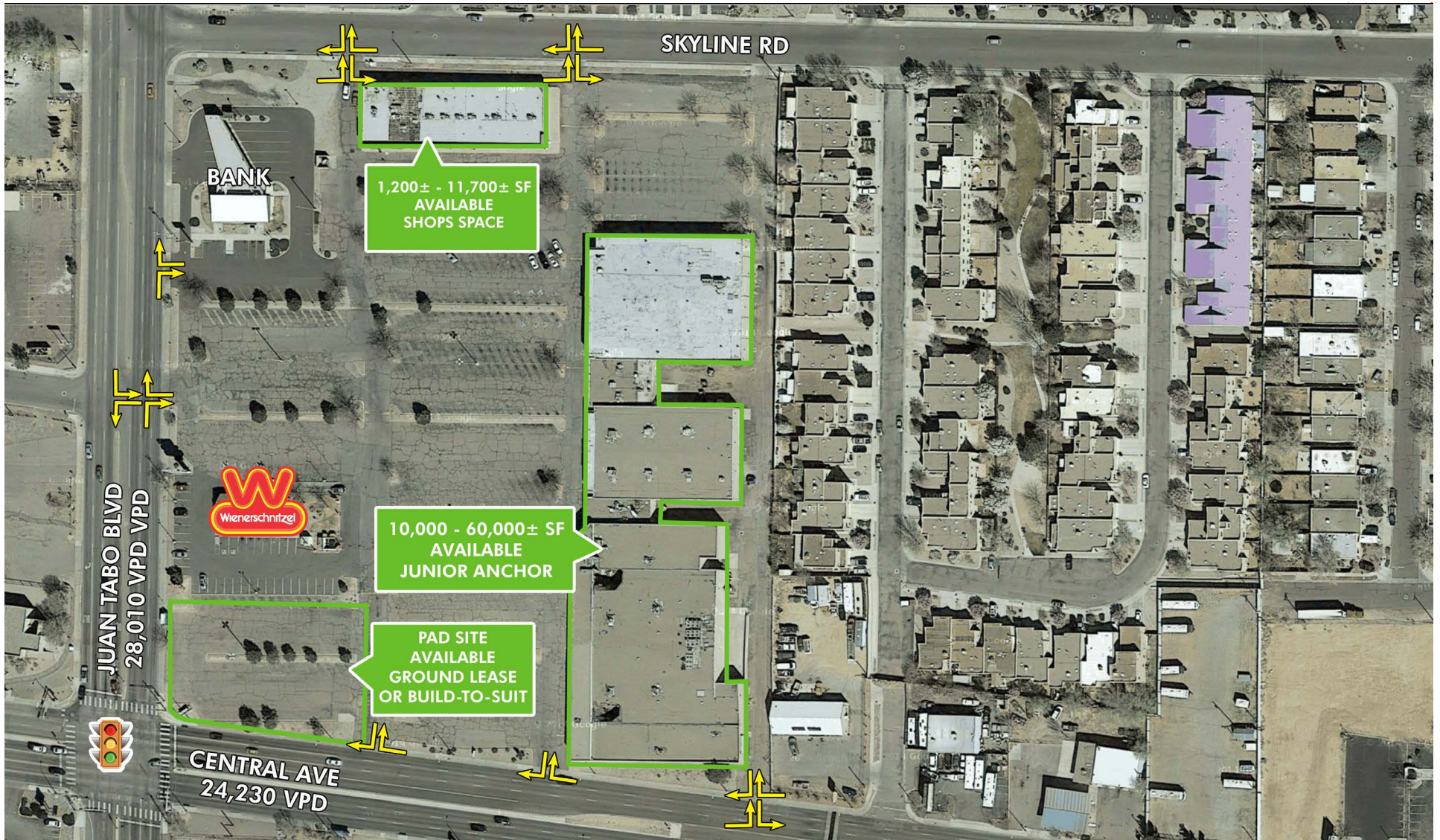
FOR LEASE

NEW JUNIOR ANCHOR, SHOPS SPACE AND PAD SITE

PLAZA 66

108 JUAN TABO BLVD, ALBUQUERQUE, NEW MEXICO 87123

RETAIL



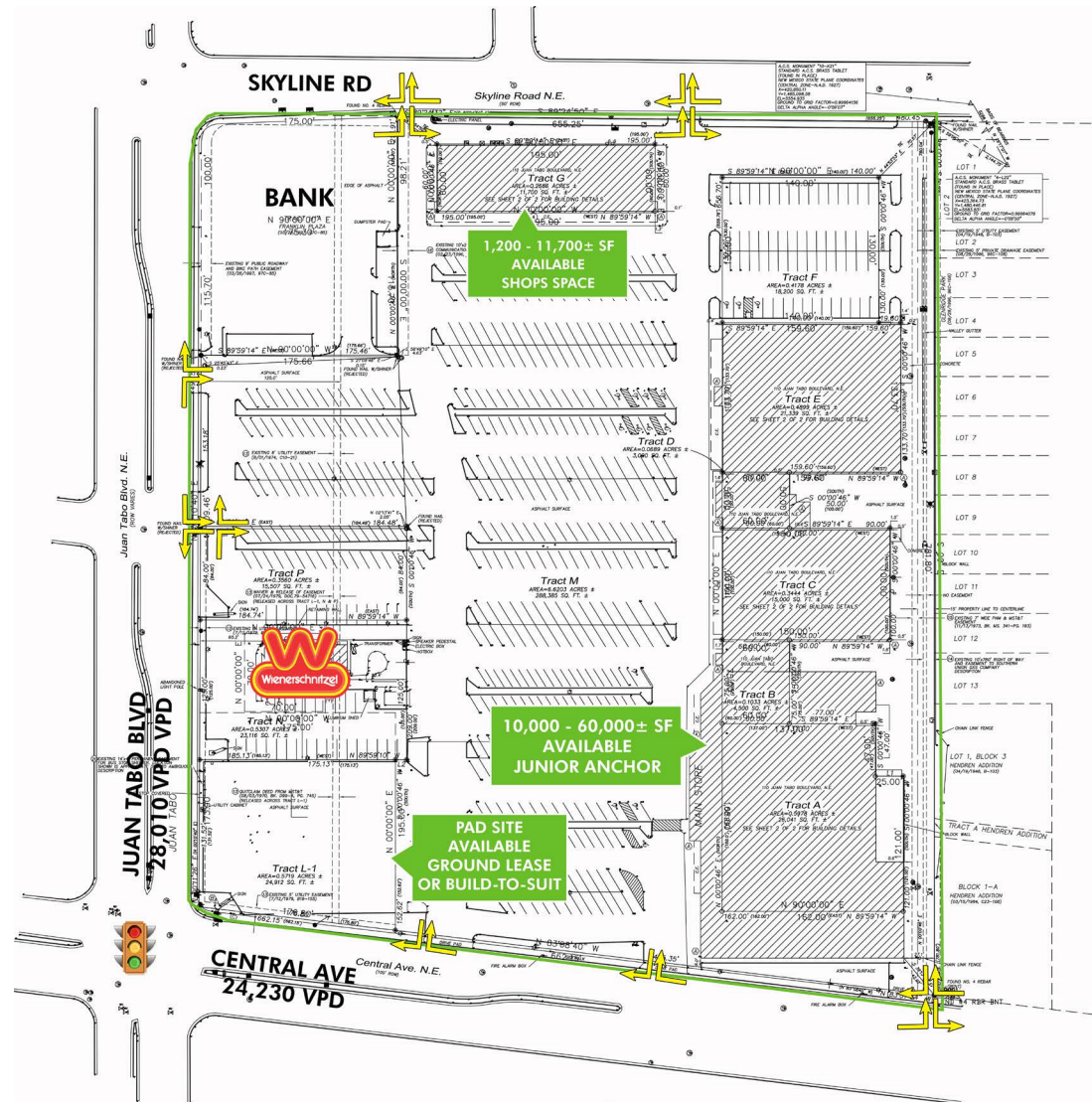
FOR LEASE

NEW JUNIOR ANCHOR, SHOPS SPACE AND PAD SITE PLAZA 66

108 JUAN TABO BLVD, ALBUQUERQUE, NEW MEXICO 87123

RETAIL

PROPERTY SURVEY



www.cbre.com/abq

CBRE

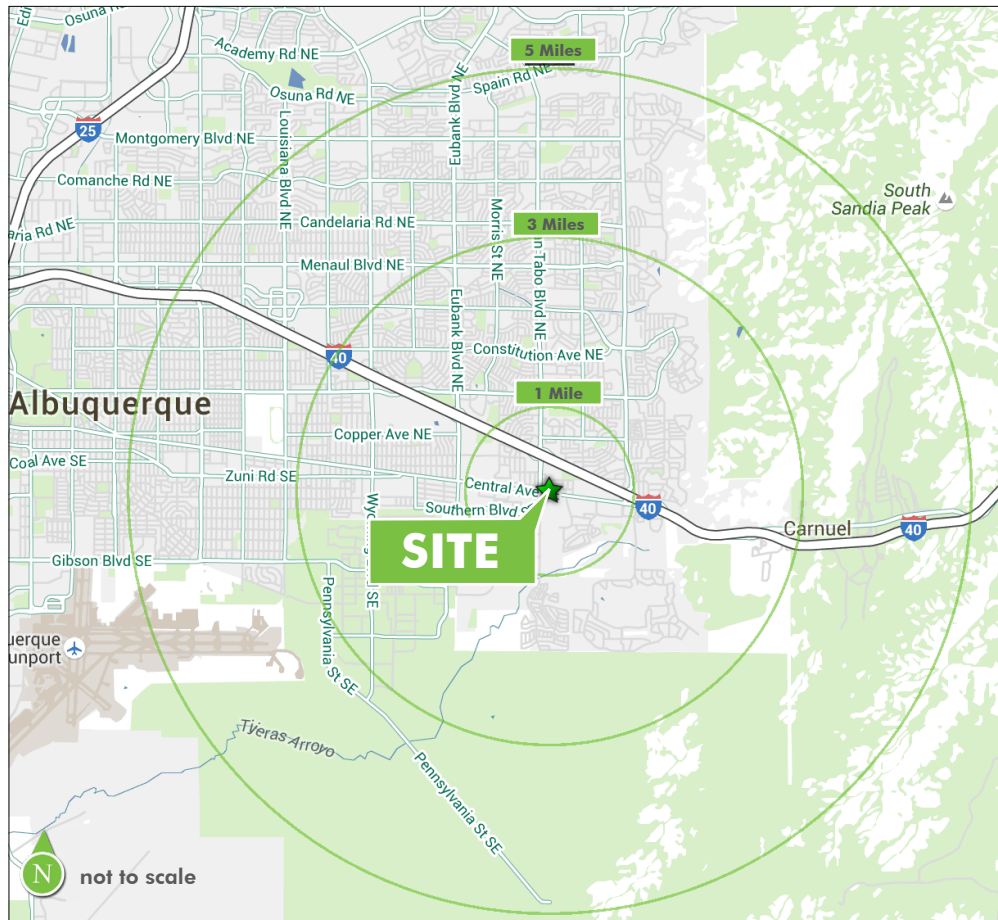
FOR LEASE

NEW JUNIOR ANCHOR, SHOPS SPACE AND PAD SITE

PLAZA 66

108 JUAN TABO BLVD, ALBUQUERQUE, NEW MEXICO 87123

RETAIL



	1 MILE	3 MILES	5 MILES
POPULATION			
2017 Population - Current Year Estimate	20,589	98,274	191,854
2022 Population - Five Year Projection	20,964	100,039	194,669
2010 Population - Census	20,419	95,783	188,107
2000 Population - Census	17,003	91,554	182,156
2010-2017 Annual Population Growth Rate	0.11%	0.35%	0.27%
2017-2022 Annual Population Growth Rate	0.36%	0.36%	0.29%
HOUSEHOLDS			
2017 Households - Current Year Estimate	8,623	39,893	83,310
2022 Households - Five Year Projection	8,765	40,446	84,217
2010 Households - Census	8,587	39,273	82,384
2000 Households - Census	7,191	36,753	77,281
2010-2017 Annual Household Growth Rate	0.06%	0.22%	0.15%
2017-2022 Annual Household Growth Rate	0.33%	0.28%	0.22%
2017 Average Household Size	2.39	2.44	2.28
HOUSEHOLD INCOME			
2017 Average Household Income	\$51,865	\$59,166	\$61,762
2022 Average Household Income	\$58,251	\$66,227	\$69,111
2017 Median Household Income	\$36,492	\$42,870	\$43,938
2022 Median Household Income	\$38,152	\$46,138	\$47,622
2017 Per Capita Income	\$22,126	\$24,237	\$27,085
2022 Per Capita Income	\$24,817	\$26,994	\$30,164
HOUSING UNITS			
2017 Housing Units	9,419	43,173	89,572
2017 Vacant Housing Units	796 8.5%	3,280 7.6%	6,262 7.0%
2017 Occupied Housing Units	8,623 91.5%	39,893 92.4%	83,310 93.0%
2017 Owner Occupied Housing Units	4,612 49.0%	22,521 52.2%	45,478 50.8%
2017 Renter Occupied Housing Units	4,011 42.6%	17,372 40.2%	37,832 42.2%
EDUCATION			
2017 Population 25 and Over	13,797	66,244	135,758
HS and Associates Degrees	8,909 64.6%	38,590 58.3%	75,919 55.9%
Bachelor's Degree or Higher	3,186 23.1%	19,568 29.5%	46,634 34.4%
PLACE OF WORK			
2017 Businesses	473	2,820	8,082
2017 Employees	5,360	34,166	91,338

Source: Neilsen

CONTACT US

Jim Dountas

First Vice President
+1 505 837 4955
jim.dountas@cbre.com

Lia Armstrong, CCIM

First Vice President
+1 505 837 4951
lia.armstrong@cbre.com

CBRE

6100 Uptown NE, Suite 300
Albuquerque, NM 87110
+1 505 837 4999
www.cbre.com/abq

© 2017 CBRE, Inc. All rights reserved. This information has been obtained from sources believed reliable, but has not been verified for accuracy or completeness. You should conduct a careful, independent investigation of the property and verify all information. Any reliance on this information is solely at your own risk. Photos herein are the property of their respective owners and use of these images without the express written consent of the owner is prohibited. CBRE and the CBRE logo are service marks of CBRE, Inc. and/or its affiliated or related companies in the United States and other countries. All other marks displayed on this document are the property of their respective owners. Updated 01/2018

www.cbre.com/abq

CBRE