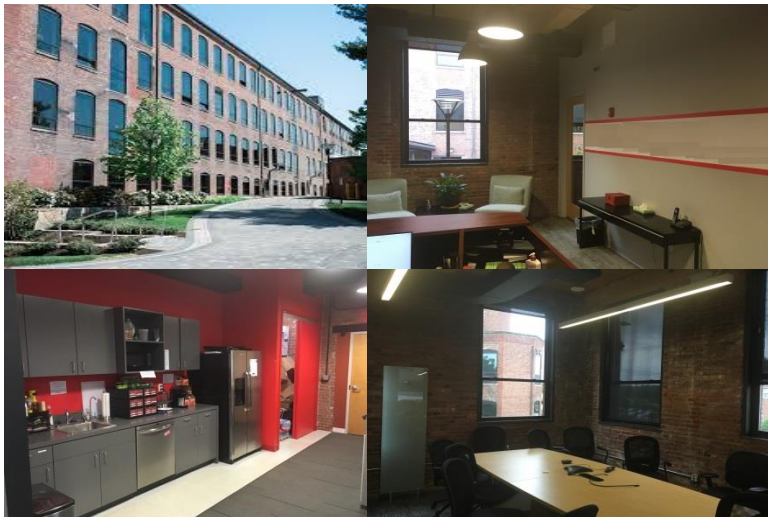
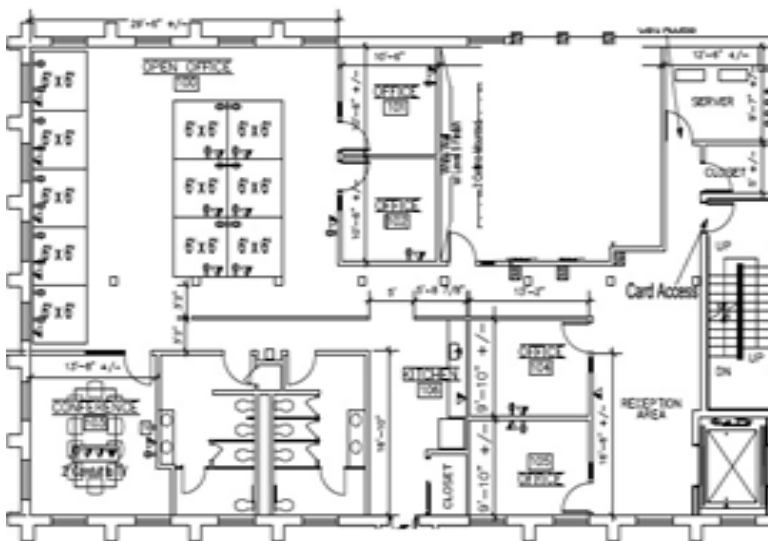


57 Chapel Street, Building D, 2nd Floor, Newton, MA 4,422 RSF Brick/Beam Office Sublease, Fully Furnished



Sublease available January 2018 of approximately 4,422 RSF in Chapelbridge Park, Newton, MA. Full service amenity package includes a full-service cafeteria, fitness center and fully renovated lobby.

The Sublease consists of brick and beam office and open layout with 4 offices, 2 conference rooms, work area with cubes, reception area and kitchen.



For more information please contact:

Eric Solem 617.869.4605
Scott Richmond 617.733.1504
Robert Elmer 617.899.0569
Ty Janney 617.283.3126
Landmark Real Estate Advisors, LLC
www.lreadvisors.com

Building Description: Chapelbridge Park is a 285,000, full service, first class office building located just North of Exit 17 of the Mass Pike.

Rent: Negotiable

Occupancy: As early as January 2018

Term: 1 year, ~3 Months (through March 24, 2019, extension term available on a direct basis after Term)

Furniture: Available

Cabling/wiring: Space is wired

Amenities: Chapelbridge Park features a newly renovated lobby, full-service cafeteria and fitness center. The park provides 2.5/1000 SF parking spaces available.

landmark Real Estate Advisors • 617.906.5567 • www.lreadvisors.com

Note: The information contained herein is believed to be accurate but is not warranted as to accuracy and may change or be updated without notice. Seller, Landlord or Sublandlord makes no representation as to the environmental condition of the property and recommends Purchaser's or Tenant's independent investigation.